

STATE OF OREGON } ss.  
County of Benton }

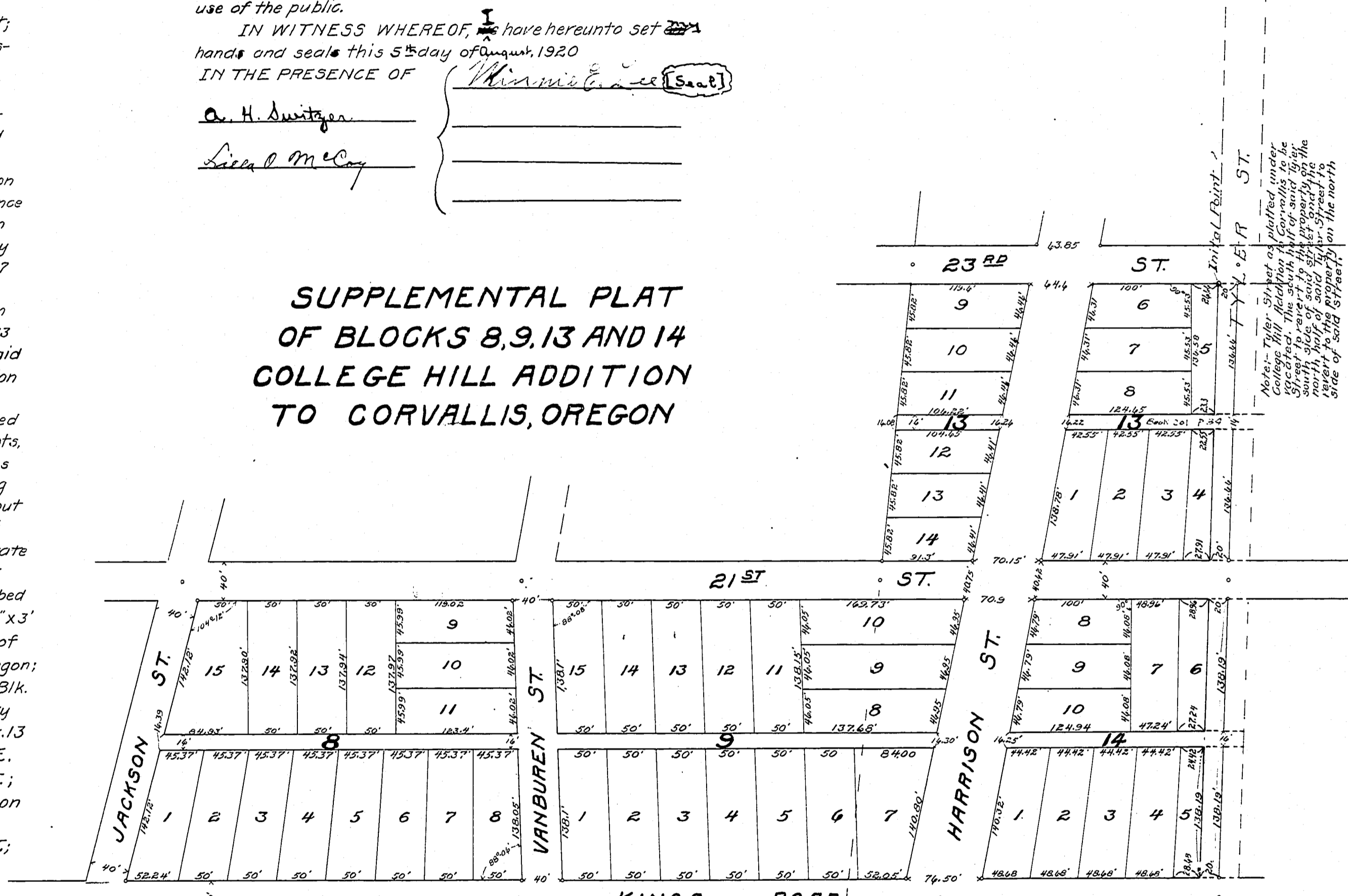
I, Fred J. Porter, being first sworn, depose and say: that I am a Surveyor and duly appointed, qualified and acting Engineer of the City of Corvallis, Benton County, Oregon; that acting in the capacity of said City Engineer, I have correctly surveyed the land shown on the accompanying plat, and have laid out and platted the same into the streets, lots and blocks as marked and shown on said accompanying plat; that I have marked with proper monuments the said land as represented upon the accompanying plat as is by law required; that I have planted a proper monument, as is by statute provided, which monument indicates the initial point of the survey made as aforesaid, and that the dimensions and kind of said monument are as follows: a certain galvanized iron pipe 2 inches in diameter by three feet long; that the location of said monument, so planted on said initial point with reference to North East Corner of the Charles Johnson D.L.C. No. 52 in said Benton County which is a known corner established by the United States survey, is as follows: North 83°-45' East 667 feet from said North East corner of the Charles Johnson D.L.C.; that the lands so platted and laid out are to be known as Blocks 8, 9, 13 and 14 Supplemental Plat of Blocks 8, 9, 13 and 14 College Hill Addition to Corvallis, Oregon; that said land comprises Blocks 8, 9, 13 and 14 of College Hill Addition to Corvallis, Benton County, Oregon; that this plat and addition is supplemental platting of lands within last named addition; that the widths, lengths, and dimensions of all lots, blocks, streets and alleys within or upon said lands as so platted, are so marked and indicated upon the accompanying plat; that all streets and alleys therein are platted and laid out to conform to adjoining plats of lands within said City of Corvallis; that the lands, so platted are within the Corporate limits of the City of Corvallis, Benton County, Oregon; that the lands so platted and laid out, are bounded and described as follows, to wit: Beginning at a galvanized iron pipe 2"x3' North 83°-45' East 667 feet from the North East corner of the Charles Johnson D.L.C. No. 52 in Benton County, Oregon; run thence S. 0°-55' W. 310.86 feet to the S.W. corner of Blk. 13 of College Hill Addition to Corvallis, Benton County Oregon; thence S. 85°-7' E. along the S. line of said Blk. 13 330.9 feet to the E. line of 21<sup>st</sup> ST.; thence S. 0°-55' E. 680' along the E. line of 21<sup>st</sup> ST. to the N. line of Jackson ST.; thence S. 76°-55' E. 300.63 feet along the N. line of Jackson ST. to the W. line of Kings Road; thence N. 0°-53' W. 1094.2 feet along the W. line of Kings Road to the S. line of Tyler ST.; thence N. 89°-30' W. 621.7 feet along the S. line of Tyler ST. to place of beginning.

KNOW ALL MEN BY THESE PRESENTS, THAT ~~we~~  
I, Minnie E. Lee, a widow, and  
the owners, in fee simple, of the tract of land laid out on  
this plat and more particularly described in the affidavit  
of the surveyor hereon, do hereby plat and lay the same off  
in the lots, blocks, streets and alleys as marked and design-  
ated on this plat; and to be known as Supplemental Plat of  
Blocks 8, 9, 13 and 14 of College Hill Addition to Corvallis,  
Oregon; and ~~we~~ do hereby dedicate the streets and alleys  
designated on this plat and as hereon platted, to the  
use of the public.

IN WITNESS WHEREOF, I have hereunto set ~~my~~  
hands and seals this 5<sup>th</sup> day of August, 1920

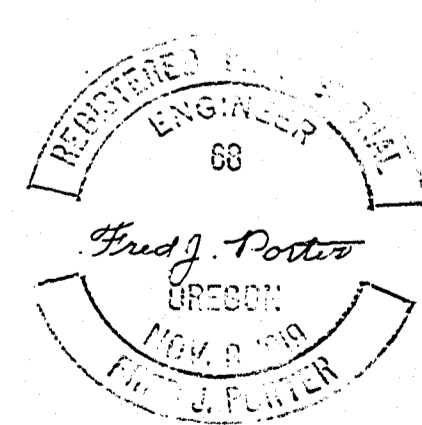
IN THE PRESENCE OF  
Minnie E. Lee [Seal]  
A. H. Switzger  
Lillian McCay

**SUPPLEMENTAL PLAT  
OF BLOCKS 8, 9, 13 AND 14  
COLLEGE HILL ADDITION  
TO CORVALLIS, OREGON**

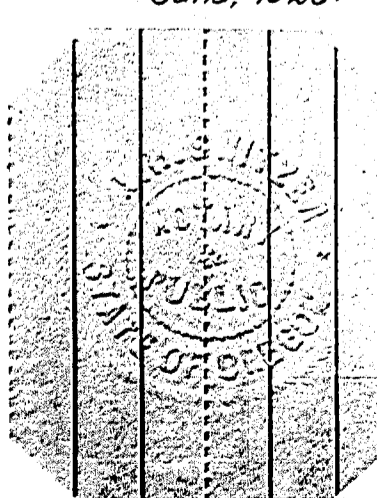


Fred J. Porter  
Subscribed and sworn to before me this 26th day of  
June, 1920.  
A. H. Switzger  
Notary Public for Oregon.  
My Commission expires  
Apr. 4, 1923

Filed Aug. 18<sup>th</sup> 1920  
Fred McHenry  
County Clerk, Benton County, Oregon



STATE OF OREGON } ss.  
County of Benton }  
I hereby certify that the within map  
was received for record on the 24<sup>th</sup>  
day of Aug 1920 at 11:17  
o'clock P.M. and recorded  
in 13 on page 13  
Date Aug 24, 1920  
Witness my hand and seal of office  
affixed Wm. H. Leonard  
Recorder of Corvallis



STATE OF OREGON }  
County of Benton } S.S.

THIS CERTIFIES, That on this 5th day of August, 1920, before me, a Notary Public, personally appeared the within named Minnie E. Lee a widow and was  
married.

who ~~is~~ known to me to be the identical individuals described in and who executed the within instrument, and acknowledged to me that ~~they~~ executed the same freely and voluntarily for the uses and purposes therein set forth.

IN TESTIMONY WHEREOF, I have hereunto set my hand and Notarial seal, the day and year last above written.

A. H. Switzer  
Notary Public for Oregon.  
My Commission expires  
April 4th, 1923.

This plat and the dedication of the streets and alleys thereof, as made and designated on this sheet, are hereby accepted and approved this 5 day of August, 1920.

H. A. McLane  
County Judge of Benton  
County, Oregon.

J. C. Morrison  
County Commissioner of  
Benton County, Oregon.

R. C. von Sche  
County Commissioner of  
Benton County, Oregon.

Frank J. Porter  
City Engineer of the City  
of Corvallis, Oregon.

W. H. Rickard  
County Assessor for  
Benton County, Oregon.

STATE OF OREGON  
County of Benton

I hereby certify that all taxes and assessments upon the property, in this plat described, are fully paid.

Dated this 18 day of August, 1920.

M. W. Field  
Sheriff and Ex-Officio  
Tax Collector of  
Benton County, Oregon.

Supp. Plat Blks.  
8, 9, 13, & 14  
College Hill Add.

Supp. Plat, Blks. 8,  
9, 13, & 14,  
College Hill Add.

STATE OF OREGON }  
County of Benton } S.S.

I, Fred J. Porter, being first sworn, depose and say: that I am a Surveyor and duly appointed, qualified and acting Engineer of the City of Corvallis, Benton County, Oregon; that acting in the capacity of said City Engineer, I have correctly surveyed the land shown on the accompanying plat, and have laid out and platted the same into the streets, lots and blocks as marked and shown on said accompanying plat; that I have marked with proper monuments the said land as represented upon the accompanying plat as is by law required; that I have planted a proper monument, as is by statute provided, which monument indicates the initial point of the survey made as aforesaid, and that the dimensions and kind of said monument are as follows: a certain galvanized iron pipe 2 inches in diameter by three feet long; that the location of said monument, so planted on said initial point with reference to North East Corner of the Charles Johnson D.L.C. No. 52 in said Benton County which is a known corner established by the United States survey, is as follows: North 83°-45' East 667 feet from said North East corner of the Charles Johnson D.L.C.; that the lands so platted and laid out are to be known as Blocks 8, 9, 13 and 14 Supplemental Plat of Blocks 8, 9, 13 and 14 College Hill Addition to Corvallis, Oregon; that said land comprises Blocks 8, 9, 13 and 14 of College Hill Addition to Corvallis, Benton County, Oregon; that this plat and addition is supplemental platting of lands within last named addition; that the widths, lengths, and dimensions of all lots, blocks, streets and alleys within or upon said lands as so platted, are so marked and indicated upon the accompanying plat; that all streets and alleys therein are platted and laid out to conform to adjoining plats of lands within said City of Corvallis; that the lands so platted are within the Corporate limits of the City of Corvallis, Benton County, Oregon; that the lands so platted and laid out, are bounded and described as follows, to wit: Beginning at a galvanized iron pipe 2" x 3" N. 83°-45' East 667 feet from the North East corner of the Charles Johnson D.L.C. No. 52 in Benton County, Oregon; run thence S. 0°-55' W. 310.86 feet to the S.W. corner of Blk. 13 of College Hill Addition to Corvallis, Benton County Oregon; thence S. 85°-7' E. along the S. line of said Blk. 13, 330.9 feet to the E. line of 21<sup>st</sup> ST.; thence S. 0°-55' E. 680' along the E. line of 21<sup>st</sup> ST. to the N. line of Jackson ST.; thence S. 76°-55' E. 300.63 feet along the N. line of Jackson ST. to the W. line of Kings Road; thence N. 0°-53' W. 1094.2 feet along the W. line of Kings Road to the S. line of Tyler ST.; thence N. 89°-30' W. 621.7 feet along the S. line of Tyler ST. to place of beginning.

Fred J. Porter

Subscribed and sworn to before me this 26th day of June, 1920.

A.H. Switzer  
Notary Public for Oregon  
My Commission Expires Apr. 4, 1923

KNOW ALL MEN BY THESE PRESENTS THAT I, Minnie E. Lee, a widow and unmarried, the owner in fee simple of the tract of land laid out on this plat and more particularly described in the affidavit of the surveyor hereon, do hereby plat and lay the same off in the lots, blocks, streets and alleys as marked and designated on this plat, and to be known as Supplemental Plat of Blocks 8, 9, 13 and 14 of College Hill Addition to Corvallis, Oregon; and I do hereby dedicate the streets and alleys designated on this plat and as hereon platted, to the use of the public.

IN WITNESS WHEREOF I have hereunto set my hand and seal this 5th day of August 1920.

IN THE PRESENCE OF  
A.H. Switzer  
Lilla O. McCoy

Minnie E. Lee Seal

STATE OF OREGON }  
County of Benton } S.S.

THIS CERTIFIES That on this 5th day of August 1920, before me, a Notary Public, personally appeared the within named Minnie E. Lee, a widow and unmarried, who is known to me to be the identical individual described in and who executed the within instrument and acknowledged to me that she executed the same freely and voluntarily for the uses and purposes therein set forth.

IN TESTIMONY WHEREOF, I have hereunto set my hand and Notarial seal, the day and year last above written.

A.H. Switzer  
Notary Public for Oregon  
My Commission April 4, 1923

STATE OF OREGON  
County of Benton

I hereby certify that all taxes and assessments upon the property, in this plat described are fully paid.

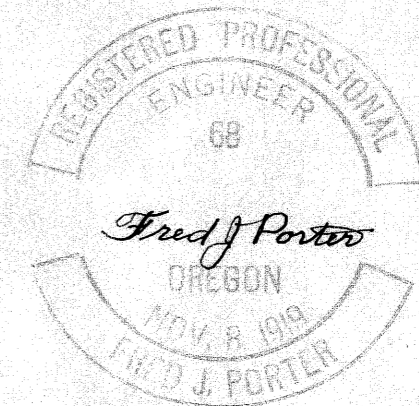
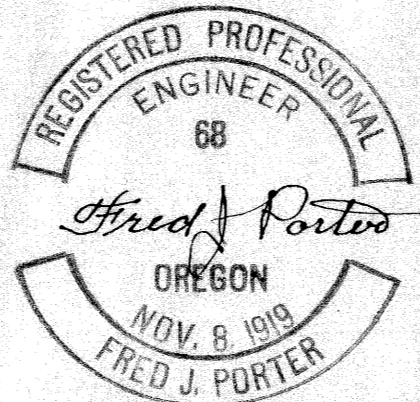
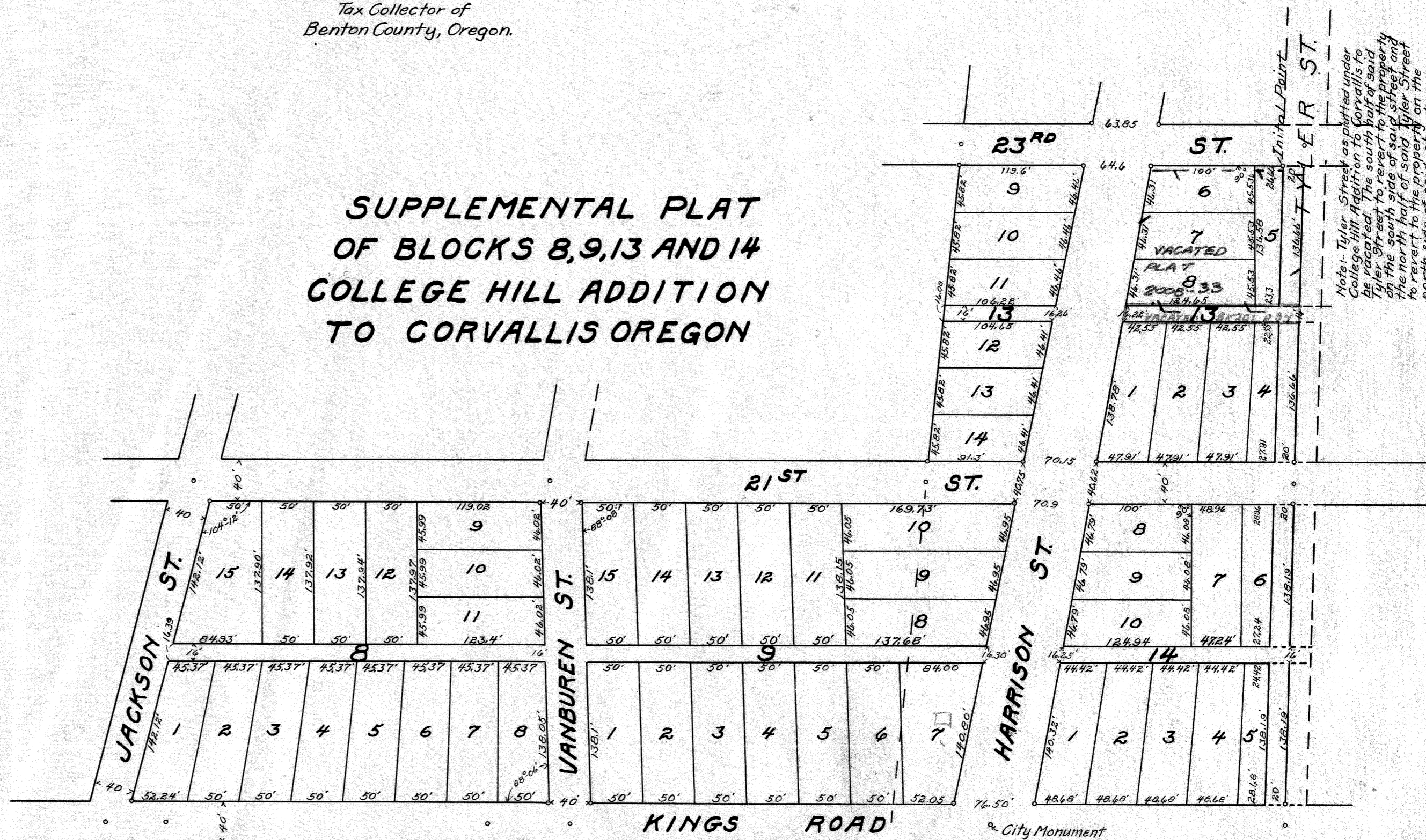
Dated this 18th day of August 1920.

S.N. Warfield  
Sheriff and Ex-Officio  
Tax Collector of  
Benton County, Oregon.

This plat and the dedication of the streets and alleys thereof, as made and designated on this sheet, are hereby accepted and approved this 5th day of August, 1920.

W.H. Malone  
County Judge of Benton County, Oregon.  
H.C. Herron  
County Commissioner Benton County, Oregon.  
R.C. von Lehe  
County Commissioner Benton County, Oregon.  
Fred J. Porter  
City Engineer of the City of Corvallis, Oregon.  
W.H. Rickard  
County Assessor for Benton County, Oregon.

SUPPLEMENTAL PLAT  
OF BLOCKS 8, 9, 13 AND 14  
COLLEGE HILL ADDITION  
TO CORVALLIS OREGON



Supp. Plat Blks.  
8, 9, 13, & 14  
College Hill Add.

Supp. Plat, Blks. 8,  
9, 13, & 14,  
College Hill Add.

STATE OF OREGON } s.s.  
County of Benton }

I, Fred J. Porter, being first sworn, depose and say: that I am a Surveyor and duly appointed, qualified and acting Engineer of the City of Corvallis, Benton County, Oregon; that acting in the capacity of said City Engineer, I have correctly surveyed the land shown on the accompanying plat, and have laid out and platted the same into the streets, lots and blocks as marked and shown on said accompanying plat; that I have marked with proper monuments the said land as represented upon the accompanying plat as is by law required; that I have planted a proper monument, as is by statute provided, which monument indicates the initial point of the survey made as aforesaid, and that the dimensions and kind of said monument are as follows: a certain galvanized iron pipe 2 inches in diameter by three feet long; that the location of said monument, so planted on said initial point with reference to North East Corner of the Charles Johnson D.L.G. No. 52 in said Benton County which is a known corner established by the United States survey, is as follows: North 83°-45' East 667 feet from said North East corner of the Charles Johnson D.L.G.; that the lands so platted and laid out are to be known as Blocks 8, 9, 13 and 14 Supplemental Plat of Blocks 8, 9, 13 and 14 College Hill Addition to Corvallis, Oregon; that said land comprises Blocks 8, 9, 13 and 14 of College Hill Addition to Corvallis, Benton County, Oregon; that this plat and addition is supplemental platting of lands within last named addition; that the widths, lengths, and dimensions of all lots, blocks, streets and alleys within or upon said lands as so platted, are so marked and indicated upon the accompanying plat; that all streets and alleys therein are platted and laid out to conform to adjoining plats of lands within said City of Corvallis; that the lands so platted are within the Corporate limits of the City of Corvallis, Benton County, Oregon; that the lands so platted and laid out, are bounded and described as follows, to wit: Beginning at a galvanized iron pipe 2" x 3" N. 83°-45' East 667 feet from the North East corner of the Charles Johnson D.L.G. No. 52 in Benton County, Oregon: run thence S. 0°-55' W. 310.86 feet to the S.W. corner of Blk. 13 of College Hill Addition to Corvallis, Benton County Oregon; thence S. 85°-7' E. along the S. line of said Blk. 13, 330.9 feet to the E. line of 21<sup>st</sup> ST.; thence S. 0°-55' E. 680' along the E. line of 21<sup>st</sup> ST. to the N. line of Jackson ST.; thence S. 76°-55' E. 300.63 feet along the N. line of Jackson ST. to the W. line of Kings Road; thence N. 0°-53' W. 1094.2 feet along the W. line of Kings Road to the S. line of Tyler ST.; thence N. 89°-30' W. 621.7 feet along the S. line of Tyler ST. to place of beginning.

*Fred J. Porter*  
Subscribed and sworn to before me this 26<sup>th</sup> day of June, 1920.  
A.H. Switzer  
Notary Public for Oregon  
My Commission Expires Apr. 4, 1923

KNOW ALL MEN BY THESE PRESENTS THAT I, Minnie E. Lee, a widow and unmarried, the owner in fee simple of the tract of land laid out on this plat and more particularly described in the affidavit of the surveyor hereon, do hereby plat and lay the same off in the lots, blocks, streets and alleys as marked and designated on this plat, and to be known as Supplemental Plat of Blocks 8, 9, 13 and 14 of College Hill Addition to Corvallis, Oregon; and I do hereby dedicate the streets and alleys designated on this plat and as hereon platted, to the use of the public.

IN WITNESS WHEREOF I have hereunto set my hand and seal this 5<sup>th</sup> day of August 1920.  
IN THE PRESENCE OF  
A.H. Switzer }  
Lilla O. McCoy }

Minnie E. Lee *Seal*

STATE OF OREGON } s.s.  
County of Benton }

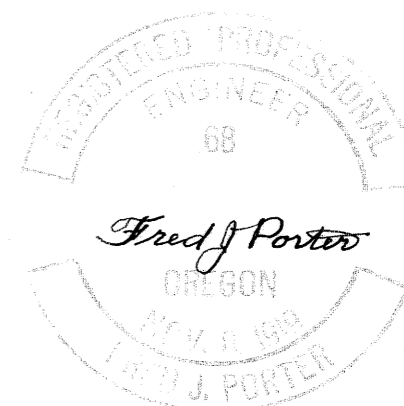
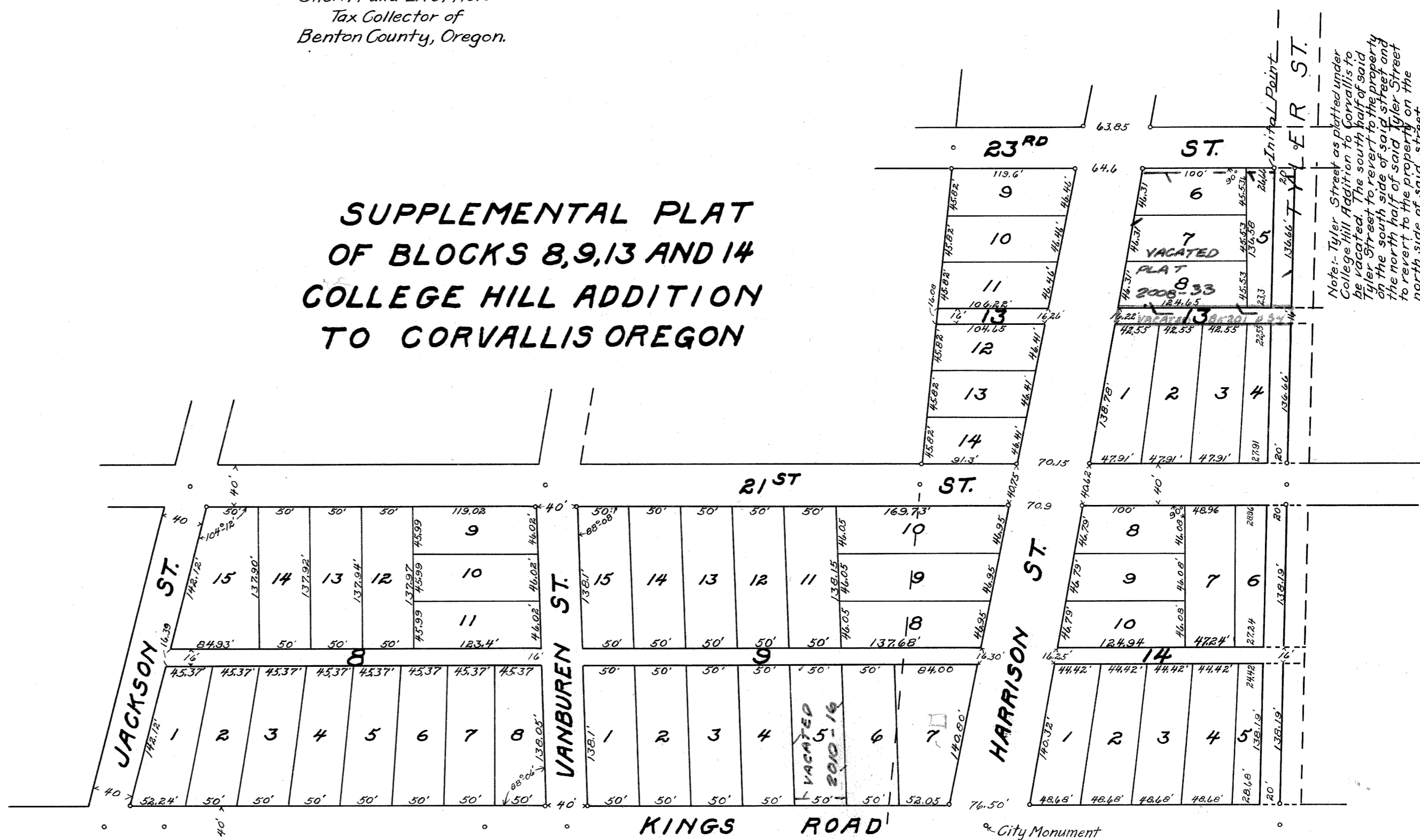
THIS CERTIFIES That on this 5<sup>th</sup> day of August 1920, before me, a Notary Public, personally appeared the within named Minnie E. Lee, a widow and unmarried, who is known to me to be the identical individual described in and who executed the within instrument and acknowledged to me that she executed the same freely and voluntarily for the uses and purposes therein set forth.

IN TESTIMONY WHEREOF, I have hereunto set my hand and Notarial seal, the day and year last above written.  
A.H. Switzer  
Notary Public for Oregon.  
My Commission April 4, 1923

STATE OF OREGON  
County of Benton

I hereby certify that all taxes and assessments upon the property, in this plat described are fully paid.  
Dated this 18<sup>th</sup> day of August 1920.  
S.N. Warfield  
Sheriff and Ex-Officio  
Tax Collector of  
Benton County, Oregon.

SUPPLEMENTAL PLAT  
OF BLOCKS 8, 9, 13 AND 14  
COLLEGE HILL ADDITION  
TO CORVALLIS OREGON



This plat and the dedication of the streets and alleys thereof, as made and designated on this sheet, are hereby accepted and approved this 5<sup>th</sup> day of August, 1920.

W.H. Malone  
County Judge of Benton County, Oregon.  
H.C. Herron  
County Commissioner Benton County, Oregon.  
R.C. von Lehe  
County Commissioner Benton County, Oregon.  
Fred J. Porter  
City Engineer of the City of Corvallis, Oregon.  
W.H. Rickard  
County Assessor for Benton County, Oregon.