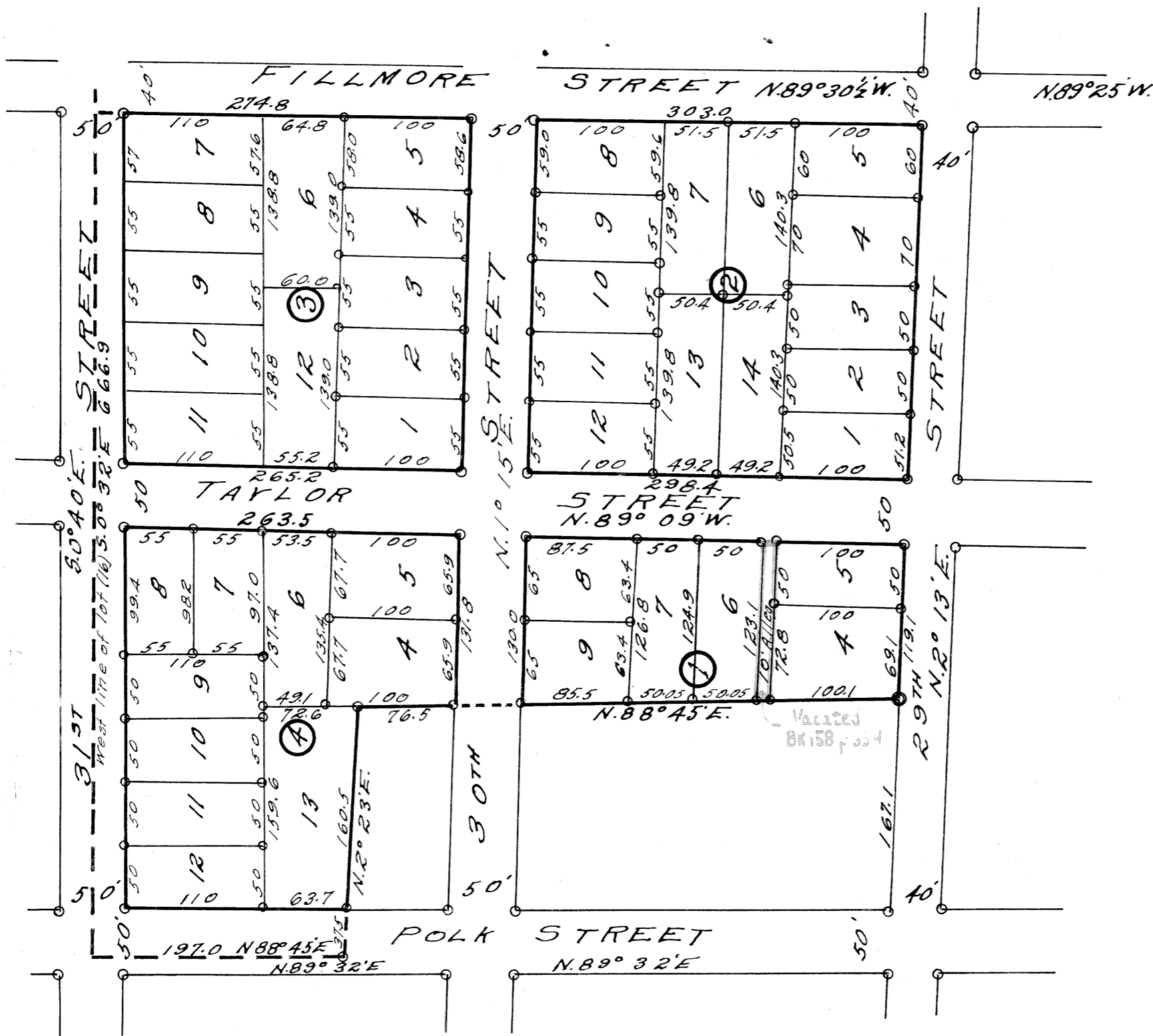


# BEAL'S SUPPLEMENT TO BLOCKS 15 & 16 OF WELLS & McELROY ADDITION TO CORVALLIS, BENTON COUNTY, OREGON.

Note: Pipes at corners indicated by  $\circ$   
Scale 1 inch = 100 Feet  
Blocks numbered 1 to 4



State of Oregon ) ss I hereby certify that I have compared  
County of Benton. ) the foregoing copy of plat with the original plat now on re-  
cord in my office. That it is a true and correct transcript  
therefrom and from the whole of such original plat as re-  
corded in Book 4 page 19 of Records of Plats for Benton County,  
Oregon, and that I am the legal custodian of the same.  
In witness whereof, I have hereunto set my hand and affix-  
ed the seal of the Recorder of Conveyances this 4th day of  
October, 1922.

I hereby certify that  
all taxes and assessments on  
said property are paid

Sam Wardfield  
Sheriff and Tax collector

J. M. Conner  
Municipal Judge, (City of Corvallis)

The plat and dedication hereon  
are approved this 4 day of Oct 1922

J. O. Wilson  
County Judge

R. D. von Sehe  
County Commissioner

R. D. Scott  
County Commissioner

L. J. Ballman  
County Assessor

Fred Porter  
City Engineer

KNOW ALL MEN BY THESE PRESENTS, That we,  
S. E. Beal and Clara L. Beal his wife, proprietors and owners  
of the lands described in the surveyor's affidavit on the  
annexed plat of "Beal's Supplement to Blocks 15 & 16 of Wells  
& McElroy Addition to Corvallis, Benton County, Oregon," do  
hereby plat and lay out said tract of land into lots, blocks,  
streets, and alleys as shown on said plat, to be known as  
"Beal's Supplement to Blocks 15 & 16 of Wells & McElroy Addition  
to Corvallis, Benton County, Oregon," do hereby dedicate to the  
Public the use of the streets and alley as shown on said  
plat. Said lots and blocks are numbered as shown on said  
plat, and all dedicated streets conform to those already in  
existence. Distances are given in feet.

IN WITNESS WHEREOF we have hereunto set our hands and  
seal this 26th day of September 1922

Done in the presence of:-  
Walter E. Larnar  
C. D. Storgan

S. E. Beal Seal  
Clara L. Beal Seal

State of Oregon } ss  
County of Benton } ss

BE IT REMEMBERED, That on this 26th day of  
September A.D. 1922, before me, the undersigned, a Notary Public  
in and for said County and State, personally appeared the above  
named S. E. Beal and Clara L. Beal, his wife, who are known to  
me to be the identical individuals described in and who executed  
the within dedication and acknowledged to me that they  
executed the same freely and voluntarily.

IN TESTIMONY WHEREOF, I have hereunto set my hand  
and Notarial Seal the day and year last above written.

State of Oregon } ss  
County of Benton } ss

C. D. Storgan Seal  
Notary Public for Oregon  
My commission expires Nov 28, 1923

1, Walter W. Larsen, being first duly sworn say:-  
that I surveyed the property hereinafter described and that  
it is situated within the corporate limits of the City of  
Corvallis. That I have correctly surveyed and marked with  
monuments the following described land, to-wit:- Beginning at  
a 2" x 36" galvanized iron pipe on the west line of 29th Street S. 89° 32' W.  
879.12 feet and N. 2° 13' E. 867.7 feet from the N.-N.E. corner of the  
Chas. L. Johnson D.L.C. 52, T. 11 S. R. 5 W., Will. Mer., Benton County, Oregon,  
and running thence along the west line of 29th Street N. 2° 13' E. 450.3  
feet to a 1" pipe on the south line of Fillmore Street, thence N. 89° 30' 1/2"  
along the south line of said street 650.7 ft. to the west line of block 16  
in said addition, thence S. 0° 32' E. along the west line of said block  
666.9 feet to the S.W. corner, thence N. 88° 45' E. along the south line  
of said block 197.0 feet to a 3/4" pipe, thence N. 2° 23' E. 198.0 feet to a 3/4"  
pipe, thence S. 88° 45' E. 422.0 feet to beginning.

That I set for the initial point a 2 inch galvanized iron pipe 36 inches  
long driven six inches below the surface of the ground. That the plat of  
said survey is hereunto annexed

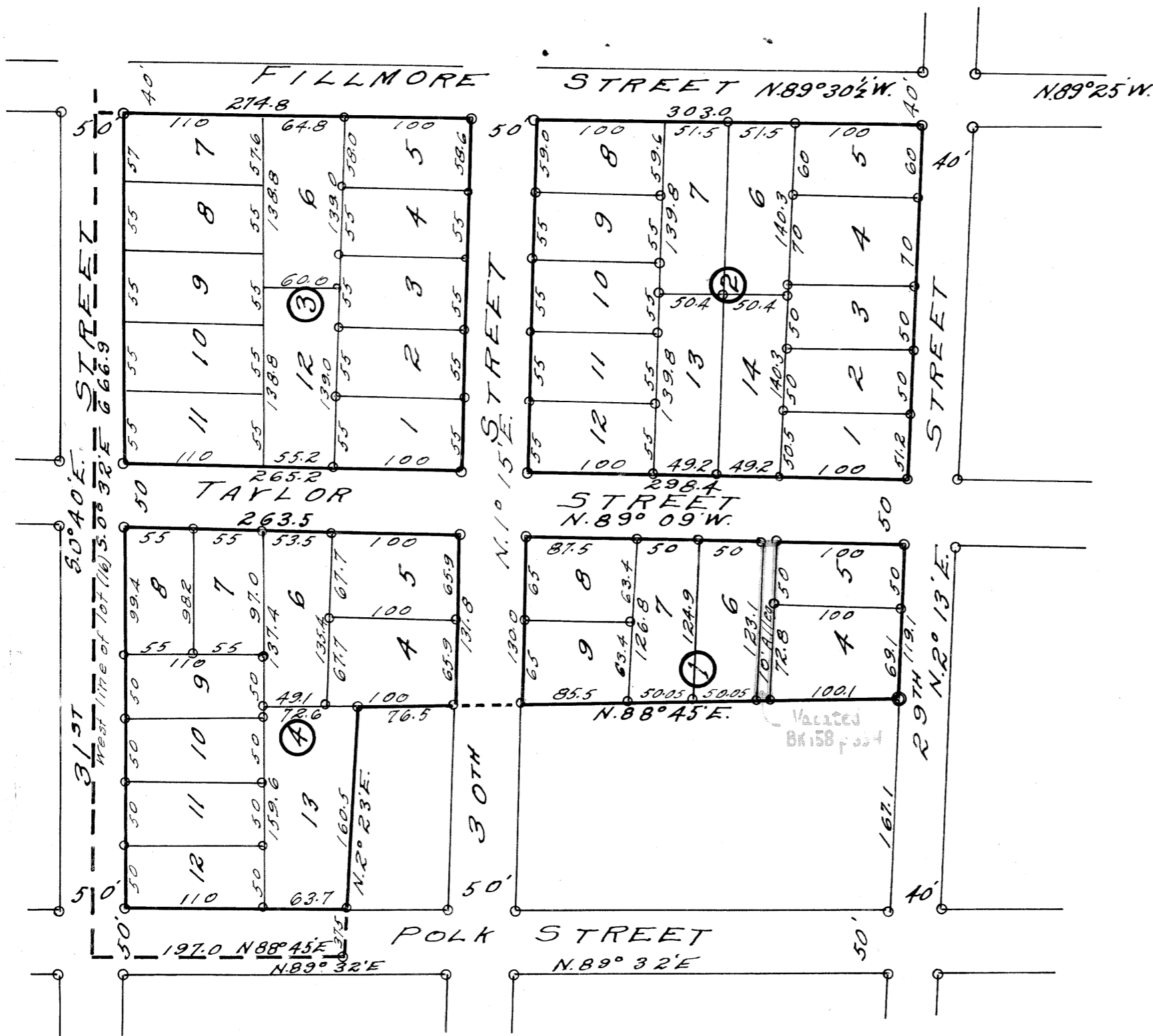
Walter W. Larsen

Subscribed and sworn to before me this 2 day of October, A.D. 1922

Fred M. Henry  
County Clerk, Benton County, Oregon.

# BEAL'S SUPPLEMENT TO BLOCKS 15 & 16 OF WELLS & McELROY ADDITION TO CORVALLIS, BENTON COUNTY, OREGON.

Note: Pipes at corners indicated by  $\circ$   
Scale 1 inch = 100 Feet  
Blocks numbered 1 to 4



State of Oregon )  
County of Benton. ) ss I hereby certify that I have compared the foregoing copy of plat with the original plat now on record in my office. That it is a true and correct transcript therefrom and from the whole of such original plat as recorded in Book 4 page 19 of Records of Plats for Benton County, Oregon, and that I am the legal custodian of the same. In witness whereof, I have hereunto set my hand and affixed the seal of the Recorder of Conveyances this 4th day of October, 1922.

I hereby certify that all taxes and assessments on said property are paid

Sam Wardfield  
Sheriff and Tax collector

J. M. Conner  
Municipal Judge, (City of Corvallis)

The plat and dedication hereon are approved this 4 day of Oct 1922

J. O. Wilson  
County Judge

R. D. von Sehe  
County Commissioner

R. D. Scott  
County Commissioner

L. J. Ballman  
County Assessor

Fred Porter  
City Engineer

KNOW ALL MEN BY THESE PRESENTS, That we, S. E. Beal and Clara L. Beal his wife, proprietors and owners of the lands described in the surveyor's affidavit on the annexed plat of "Beal's Supplement to Blocks 15 & 16 of Wells & McElroy Addition to Corvallis, Benton County, Oregon," do hereby plat and lay out said tract of land into lots, blocks, streets, and alleys as shown on said plat, to be known as "Beal's Supplement to Blocks 15 & 16 of Wells & McElroy Addition to Corvallis, Benton County, Oregon," do hereby dedicate to the Public the use of the streets and alley as shown on said plat. Said lots and blocks are numbered as shown on said plat, and all dedicated streets conform to those already in existence. Distances are given in feet.

IN WITNESS WHEREOF we have hereunto set our hands and seal this 26th day of September 1922

Done in the presence of:-  
Walter E. Larnar  
C. D. Storgan

S. E. Beal Seal  
Clara L. Beal Seal

State of Oregon } s.s.  
County of Benton }

BE IT REMEMBERED, That on this 26th day of September A.D. 1922, before me, the undersigned, a Notary Public in and for said County and State, personally appeared the above named S. E. Beal and Clara L. Beal, his wife, who are known to me to be the identical individuals described in and who executed the within dedication and acknowledged to me that they executed the same freely and voluntarily.

IN TESTIMONY WHEREOF, I have hereunto set my hand and Notarial Seal the day and year last above written.

State of Oregon } s.s.  
County of Benton }

C. D. Storgan Seal  
Notary Public for Oregon  
My commission expires Nov 28, 1923

1, Walter W. Larsen, being first duly sworn say:- that I surveyed the property hereinafter described and that it is situated within the corporate limits of the City of Corvallis. That I have correctly surveyed and marked with monuments the following described land, to-wit:- Beginning at a 2" x 36" galvanized iron pipe on the west line of 29th Street S. 89° 32' W. 879.12 feet and N. 2° 13' E. 867.7 feet from the N.-N.E. corner of the Chas. L. Johnson D.L.C. 52, T. 11 S. R. 5 W., Will. Mer., Benton County, Oregon; and running thence along the west line of 29th Street N. 2° 13' E. 450.3 feet to a 1" pipe on the southline of Fillmore Street, thence N. 89° 30' 1/2" W. along the south line of said street 650.7 ft. to the west line of block 16 in said addition, thence S. 0° 32' E. along the west line of said block 666.9 feet to the S.W. corner, thence N. 88° 45' E. along the south line of said block 197.0 feet to a 3/4" pipe, thence N. 2° 23' E. 198.0 feet to a 3/4" pipe, thence S. 88° 45' E. 422.0 feet to beginning.

That I set for the initial point a 2 inch galvanized iron pipe 36 inches long driven six inches below the surface of the ground. That the plat of said survey is hereunto annexed

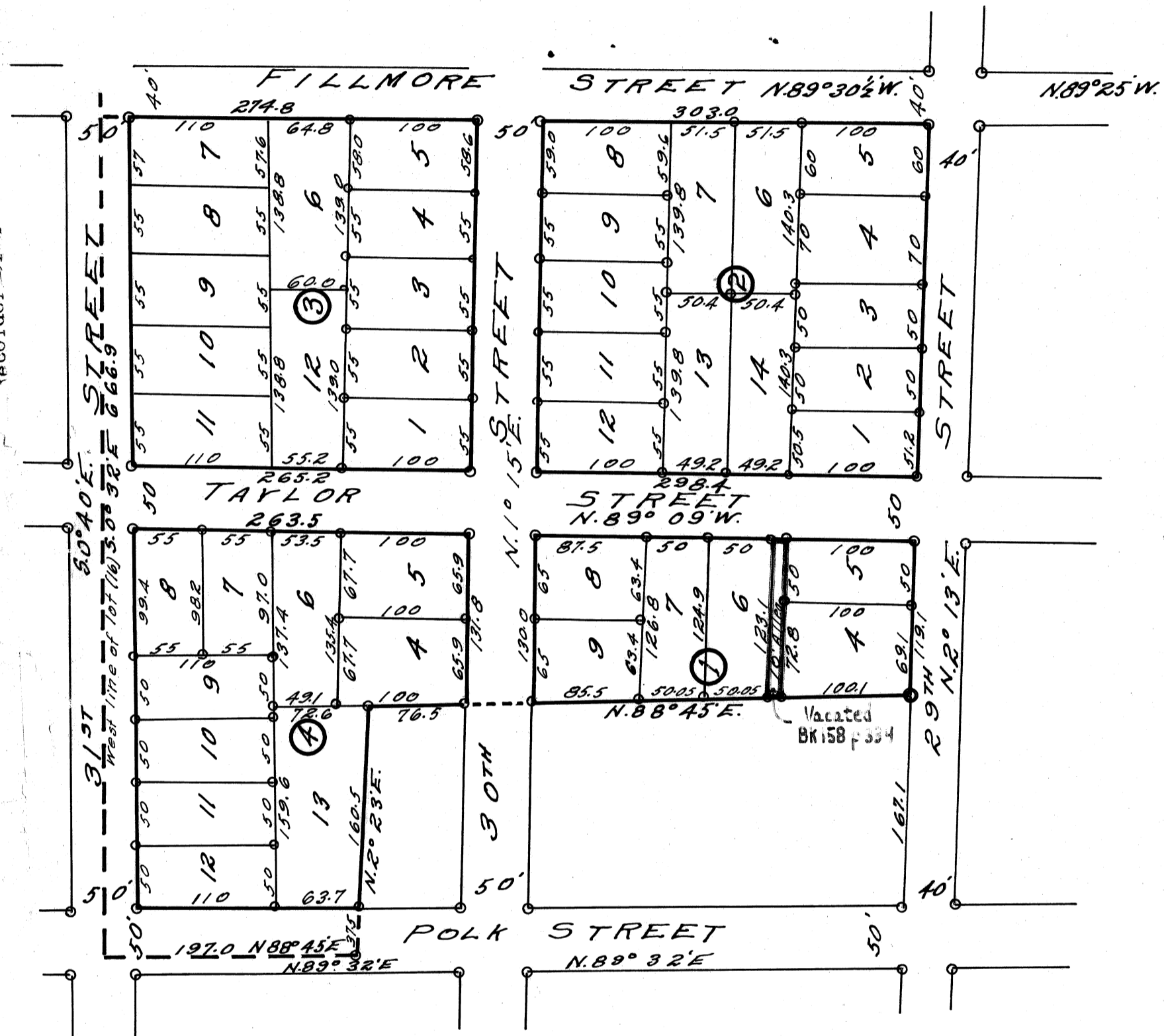
Walter W. Larsen

Subscribed and sworn to before me this 2 day of October, A.D. 1922  
Fred M. Henry  
County Clerk, Benton County, Oregon.

# BEAL'S SUPPLEMENT

## TO BLOCKS 15 & 16 OF WELLS & McELROY ADDITION TO CORVALLIS, BENTON COUNTY, OREGON.

Note: Pipes at corners indicated by  $\circ$   
Scale 1 inch = 100 Feet  
Blocks numbered 1 to 4



I hereby certify that all taxes and assessments on said property are paid

Sherman Field  
Sheriff and Tax collector

J. M. Conner  
Municipal Judge, (City of Corvallis)

The plat and dedication hereon are approved this 4 day of Oct 1922

J. O. Wilson  
County Judge

R. D. von Schen  
County Commissioner

R. M. Scott  
County Commissioner

L. J. Gallman  
County Assessor

Fred J. Porter  
City Engineer

KNOW ALL MEN BY THESE PRESENTS, That we, S. E. Beal and Clara L. Beal his wife, proprietors and owners of the lands described in the surveyor's affidavit on the annexed plat of Beal's Supplement to Blocks 15 & 16 of Wells & McElroy Addition to Corvallis, Benton County, Oregon, do hereby plat and lay out said tract of land into lots, blocks, streets, and alleys as shown on said plat, to be known as "Beal's Supplement to Blocks 15 & 16 of Wells & McElroy Addition to Corvallis, Benton County, Oregon," do hereby dedicate to the Public the use of the streets and alley as shown on said plat. Said lots and blocks are numbered as shown on said plat, and all dedicated streets conform to those already in existence. Distances are given in feet.

IN WITNESS WHEREOF we have hereunto set our hands and seal this 26th day of September 1922

Done in the presence of:-  
Stacy C. Rannar  
C. D. Storgan

S. E. Beal Seal  
Clara L. Beal Seal

State of Oregon }  
County of Benton } 55

BE IT REMEMBERED, That on this 26th day of September A. D. 1922, before me, the undersigned, a Notary Public in and for said County and State, personally appeared the above named S. E. Beal and Clara L. Beal, his wife, who are known to me to be the identical individuals described in and who executed the within dedication and acknowledged to me that they executed the same freely and voluntarily.

IN TESTIMONY WHEREOF, I have hereunto set my hand and Notarial Seal the day and year last above written.

State of Oregon }  
County of Benton } 55

C. D. Storgan Seal  
Notary Public for Oregon  
My commission expires Nov 28, 1923

I, Walter W. Larsen, being first duly sworn say:- that I surveyed the property hereinafter described and that it is situated within the corporate limits of the City of Corvallis. That I have correctly surveyed and marked with monuments the following described land, to-wit:- Beginning at a 2" x 36" galvanized iron pipe on the west line of 29th Street S. 89° 32' W. 879.12 feet and N. 2° 13' E. 867.7 feet from the N. N. E. corner of the Chas. L. Johnson D.L.C. 52, T. 11 S. R. 5 W., Will. Mer. Benton County, Oregon, and running thence along the west line of 29th Street N. 2° 13' E. 450.3 feet to a 1" pipe on the southline of Fillmore Street, thence N. 89° 30' 2" W. along the south line of said street 650.7 ft. to the westline of block 16 in said addition, thence S. 0° 32' E. along the west line of said block 666.9 feet to the S. W. corner, thence N. 88° 45' E. along the south line of said block 197.0 feet to a 3/4" pipe, thence N. 2° 23' E. 198.0 feet to a 3/4" pipe, thence S. 88° 45' E. 422.0 feet to beginning.

That I set for the initial point a 2 inch galvanized iron pipe 36 inches long driven six inches below the surface of the ground. That the plat of said survey is hereunto annexed

Walter W. Larsen  
Subscribed and sworn to before me this 2 day of October, A. D. 1922  
Fred M. Henry  
County Clerk, Benton County, Oregon.