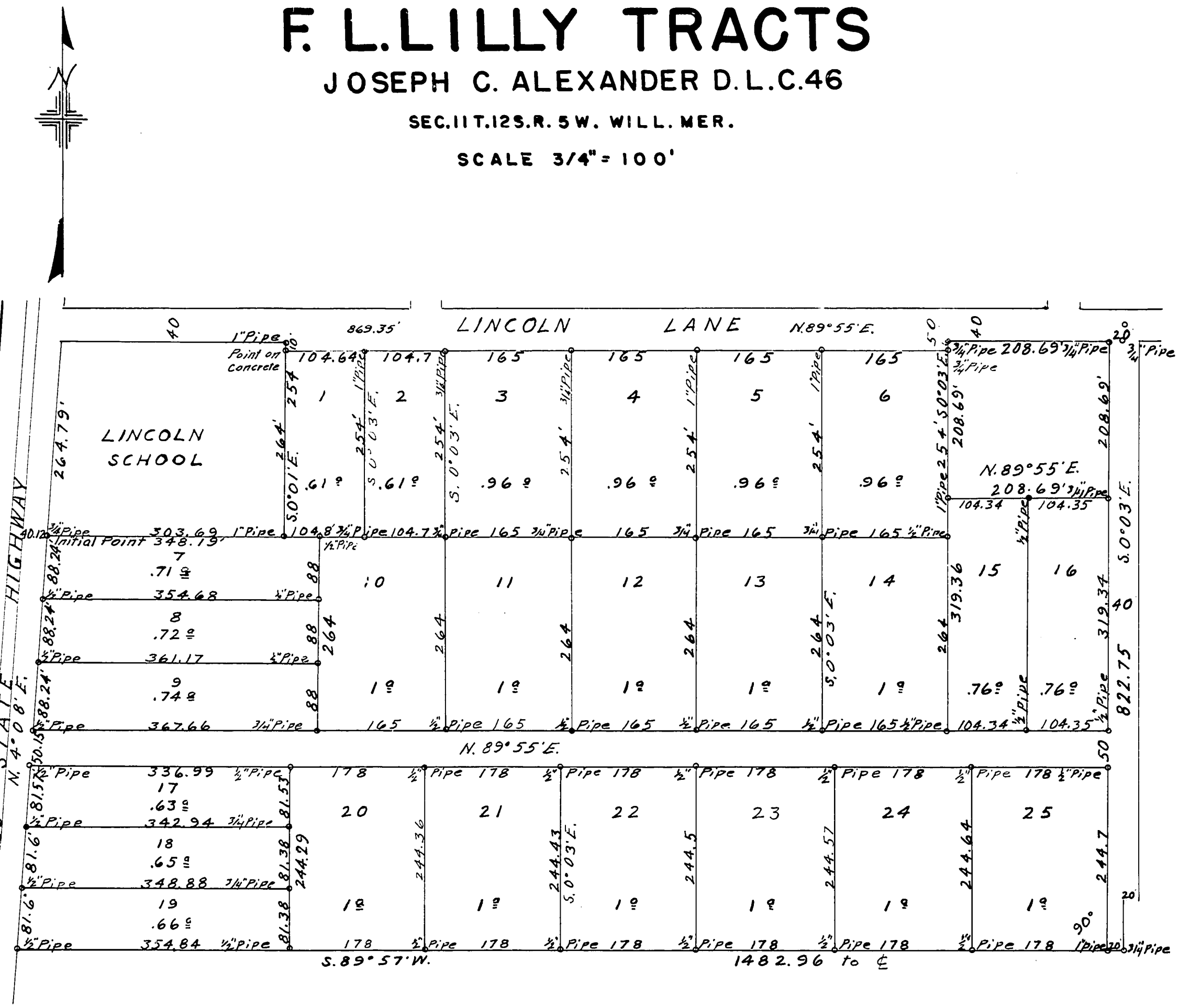


# F. L. LILLY TRACTS

JOSEPH C. ALEXANDER D.L.C.46

SEC. 11 T. 12 S. R. 5 W. WILL. MER.

SCALE 3/4" = 100'



This plat and dedication are approved this 4th day of August A.D. 1941.

McNannon  
County Judge

McLone  
County Commissioner

McNally  
County Commissioner

C. L. Tallman  
County Assessor  
By Bertha J. Tipton, Deputy

W. C. Galloway  
County Surveyor

I hereby certify that all taxes and assessments on said property are paid.

W. C. Galloway  
Sheriff and Tax Collector

STATE OF OREGON, } ss.  
County of Benton, }

I hereby certify that the within instrument was received for record

1941 SEP 17 AM 8 58

and recorded in book  
# on page # of Record of  
Plats of said County.

Witness my hand and seal of County affixed.

A. J. MOORE,  
County Clerk.

By Louis Hatten  
Deputy.

KNOW ALL MEN BY THESE PRESENTS, That we, Frank Lilly and Minnie M. Lilly, his wife, proprietors and owners of the land described in the Surveyor's affidavit hereon written and shown on the annexed plat of "F. L. Lilly Tracts" do hereby plot and lay out said tract of land into tracts and roads, the dimensions of which are in feet and as shown on said plat to be "F. L. LILLY TRACTS" said tracts are numbered from 1 to 25 inclusive and the roads are as shown on said plat.

That we dedicate to the use of the public, without reservation or restriction, the roads as shown on said plat.  
IN WITNESS WHEREOF, We, Frank L. Lilly and Minnie M. Lilly, do hereby set our hands and seals this 4th day of August A.D. 1941.

Executed in the presence of  
Ester Allphin Witness  
Leeta & Oelby Witness

Frank Lilly  
Minnie M. Lilly

STATE OF OREGON } ss.  
COUNTY OF BENTON }

BE IT REMEMBERED, That on this 4th day of August A.D. 1941 before me the undersigned a Notary Public in and for said County and State, personally appeared Frank L. Lilly and Minnie M. Lilly, his wife, who are known to me to be the identical individuals described in and who executed the within dedication and acknowledged to me that they executed the same freely and voluntarily.  
IN TESTIMONY WHEREOF, I have hereunto set my hand and Notarial Seal the day and year last above written.

Leeta & Oelby  
Notary Public for Oregon  
My commission expires  
November 26, 1941.

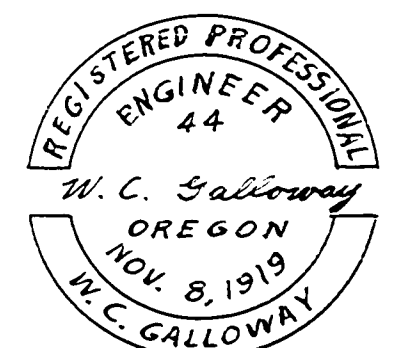
STATE OF OREGON } ss.  
COUNTY OF BENTON }

I, W. C. Galloway, being first duly sworn depose and say that I have correctly surveyed and marked with proper monuments the lands represented on the annexed plat; that as an initial point for said survey I drove a galvanized iron pipe 2 inches in diameter and 36 inches in length 6 inches below the surface of the ground, said pipe being 2269.6 feet South and 2654.5 feet East of the northwest corner of Joseph C. Alexander D.L.C. #46 T. 12 S. R. 5 W. of the Will. Mer. in Benton County, Oregon, which pipe is on the south line of Lincoln School grounds, 40 feet easterly at right angles to the center line of the pavement in the State Highway, and running thence N89°55'E. 303.69 feet to a 1 inch pipe the southeast corner of said grounds, thence N0°01'W. along the east line of said grounds 264 feet to a 1 inch pipe on the south line of Lincoln Lane, a 40 foot road, thence along south line of said road N89°55'E. 869.35 feet to a 3/4 inch pipe at the northwest corner of a one acre tract, thence S0°03'E. along the west line of said tract 208.69 feet to a 1 inch pipe, thence N89°55'E. along south line of said tract 208.69 feet to a 3/4 inch pipe on the west line of a road, thence N0°03'W. along the east line of said tract and west line of said road 208.69 feet to a 3/4 inch pipe, on the south line of Lincoln Lane, thence N89°55'E. 20 feet to a 3/4 inch pipe on the east line of Frank Lilly's land, thence S0°03'E. along the east line of said Lilly's land 822.75 feet to a 3/4 inch pipe, the southeast corner of said land, thence S89°57'W. along south line of said land 1482.96 feet to center line of said pavement, thence N4°08'E. along said center line 559.63 feet, thence N89°55'E. 40.12 feet to beginning. Excepting the following: Beginning at a 1/2 inch pipe 40 feet east of right angles to the center line of the State Highway pavement and 88.24 feet S4°08'W. of the south line of Lincoln School grounds, which pipe is 2357.6 feet South and 2648.1 feet East of the northwest corner of Joseph C. Alexander D.L.C. #46 T. 12 S. R. 5 W. of the Will. Mer. in Benton County, Oregon; and running thence N89°55'E. 354.68 feet to a 1/2 inch pipe, thence S0°03'E. 88 feet to a 1/2 inch pipe, thence S89°55'W. 361.17 feet to a 1/2 inch pipe 40 feet east at right angles to the center line of said pavement, thence N4°08'E. 88.24 feet to the Place of beginning, containing .72 of an acre.

W. C. Galloway  
County Surveyor

Subscribed and sworn to before me this 4th day of Aug. A.D. 1941.

A. J. Moore  
County Clerk,  
Benton County, Oregon  
By: E. Wamberg, Deputy.

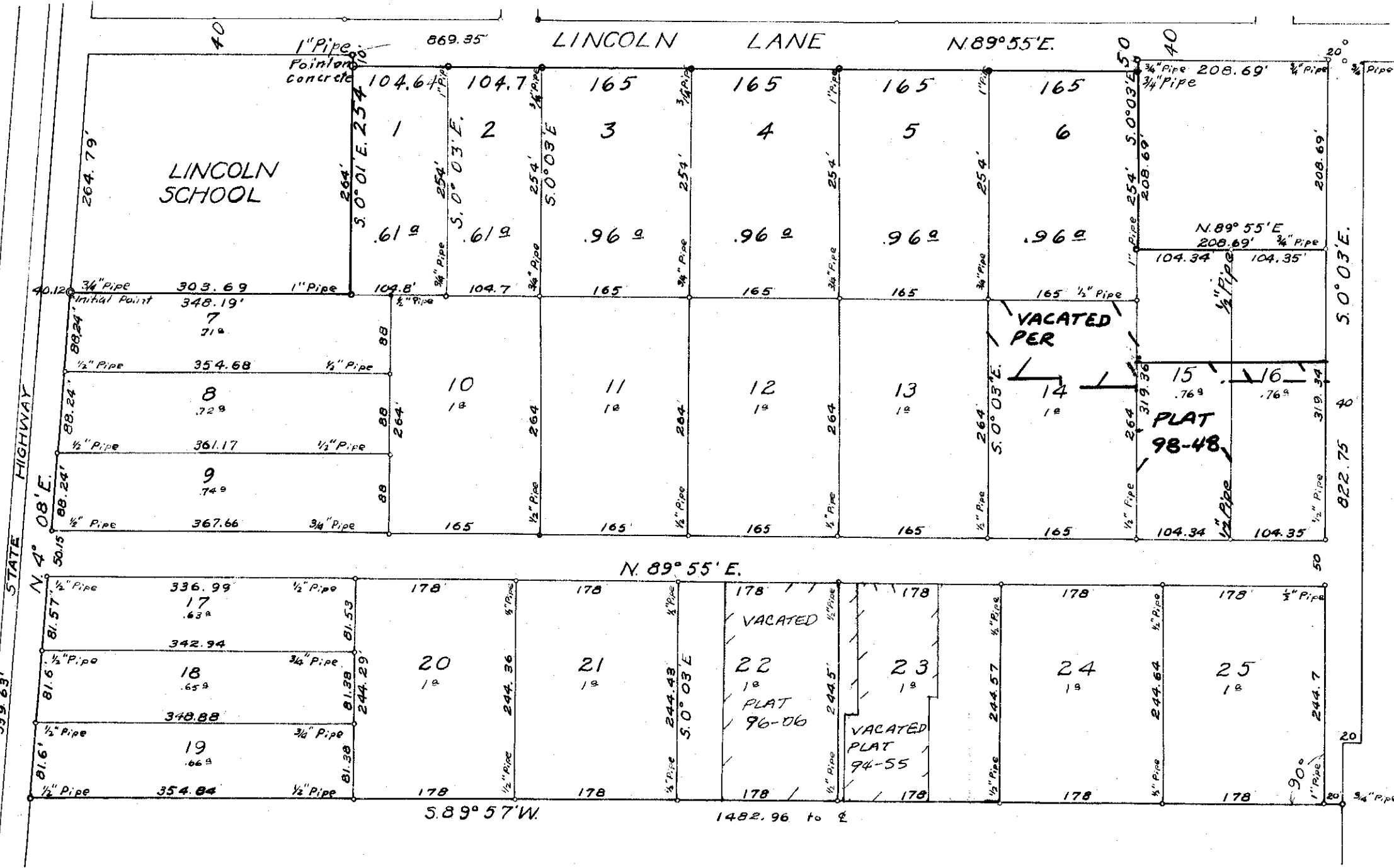


# F.L. LILLY TRACTS

## JOSEPH C. ALEXANDER D.L.C 46

SEC II T. 12 S. R. 5 W. WILL. MER.

SCALE 3/4" = 100'



KNOW ALL MEN BY THESE PRESENTS, That we, Frank Lilly and Minnie M. Lilly, his wife, proprietors and owners of the land described in the Surveyor's affidavit hereon written and shown on the annexed plat of "F.L. LILLY TRACTS" do hereby plat and lay out said tract of land into tracts and roads, the dimensions of which are in feet and as shown on said plat to be "F.L. LILLY TRACTS" said tracts are numbered from 1 to 25 inclusive and the roads are as shown on said plat.

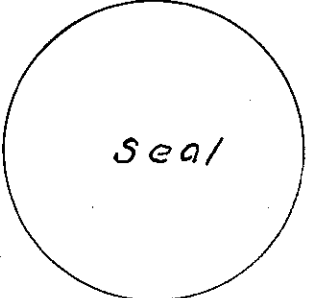
That we dedicate to the use of the public, without reservation or restriction, the roads as shown on said plat.  
 IN WITNESS WHEREOF, We, Frank L. Lilly and Minnie M. Lilly, do hereby set our hands and seals this 4th day of August A.D. 1941.

Executed in the presence of  
Esther Allphin Witness Frank L. Lilly  
Lester Seckley Witness Minnie M. Lilly

STATE OF OREGON } ss.  
 COUNTY OF BENTON }

BE IT REMEMBERED, That on this 4th day of August A.D. 1941, before me the undersigned, a Notary Public in and for said County and State, personally appeared Frank L. Lilly and Minnie M. Lilly, his wife, who are known to me to be the identical individuals described in and who executed the within dedication and acknowledged to me that they executed the same freely and voluntarily.  
 IN TESTIMONY WHEREOF, I have herunto set my hand and Notarial seal the day and year last above written.

Lester Seckley  
 Notary Public for Oregon  
 My commission expires  
 November 26, 1941.



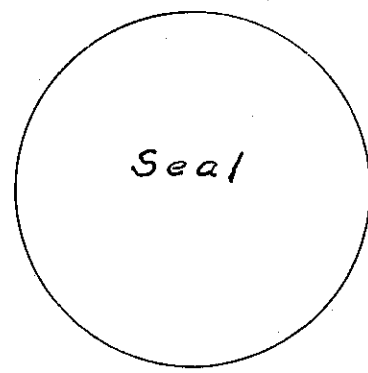
STATE OF OREGON } s.s.  
 COUNTY OF BENTON }

I, W.C. Galloway, being first duly sworn depose and say that I have correctly surveyed and marked with proper monuments the lands represented on the annexed plat; that as an initial point for said survey I drove a galvanized iron pipe 2 inches in diameter and 36 inches in length 6 inches below the surface of the ground said pipe being 2269.6 feet South and 2654.5 feet East of the northwest corner of Joseph C. Alexander D.L.C. #46 T. 12 S. R. 5 W. of the Will. Mer. in Benton County, Oregon, which pipe is on the south line of Lincoln School grounds, 40 feet easterly at right angles to the center line of the pavement in the State Highway, and running thence N. 89° 55' E. 303.69 feet to a 1 inch pipe the southeast corner of said grounds, thence N. 0° 01' W. along the east line of said grounds 264 feet to a 1 inch pipe on the south line of Lincoln Lane, a 40 foot road, thence along south line of said road N. 89° 55' E. 869.35 feet to a 3/4 inch pipe at the northwest corner of a one acre tract, thence S. 0° 03' E. along the west line of said tract 208.69 feet to a 1 inch pipe, thence N. 89° 55' E. along south line of said tract 208.69 feet to a 3/4 inch pipe on the west line of a road, thence N. 0° 03' W. along the east line of said tract and west line of said road 208.69 feet to a 3/4 inch pipe on the south line of Lincoln Lane, thence N. 89° 55' E. 20 feet to a 3/4 inch pipe on the east line of Frank Lilly's land, thence S. 0° 03' E. along the east line of said Lilly's land 822.75 feet to a 3/4 inch pipe, the southeast corner of said land, thence S. 89° 57' W. along south line of said land 1482.96 feet to center line of said pavement, thence N. 4° 08' E. along said center line 559.68 feet, thence N. 89° 55' E. 40.12 feet to beginning. Excepting the following: Beginning at a 1/2 inch pipe 40 feet east at right angles to the center line of the State Highway pavement and 88.24 feet S. 4° 08' W. of the south line of Lincoln School grounds, which pipe is 2357.6 feet South and 2648.1 feet East of the northwest corner of Joseph C. Alexander D.L.C. #46 T. 12 S. R. 5 W. of the Will. Mer. in Benton County, Oregon; and running thence N. 89° 55' E. 354.68 feet to a 1/2 inch pipe, thence S. 0° 03' E. 88 feet to a 1/2 inch pipe, thence S. 89° 55' W. 361.17 feet to a 1/2 inch pipe 40 feet east, at right angles to the center line of said pavement, thence N. 4° 08' E. 88.24 feet to the place of beginning, containing .72 of an acre.

W. C. Galloway  
 County Surveyor

Subscribed and sworn to before me this 4th day of Aug. A.D. 1941.

A. J. Moore  
 County Clerk,  
 Benton County, Oregon  
 By: E. Wamborg Deputy



This plat and dedication are approved this 4th day of August A.D. 1941.

N. C. Henson  
 County Judge  
W. H. Malone  
 County Commissioner  
C. P. Hyde  
 County Commissioner

C. L. Tallman  
 County Assessor  
 By: Bertha S. M. Antipe, Deputy  
W. C. Galloway  
 County Surveyor

I hereby certify that all taxes and assessments on said property are paid.

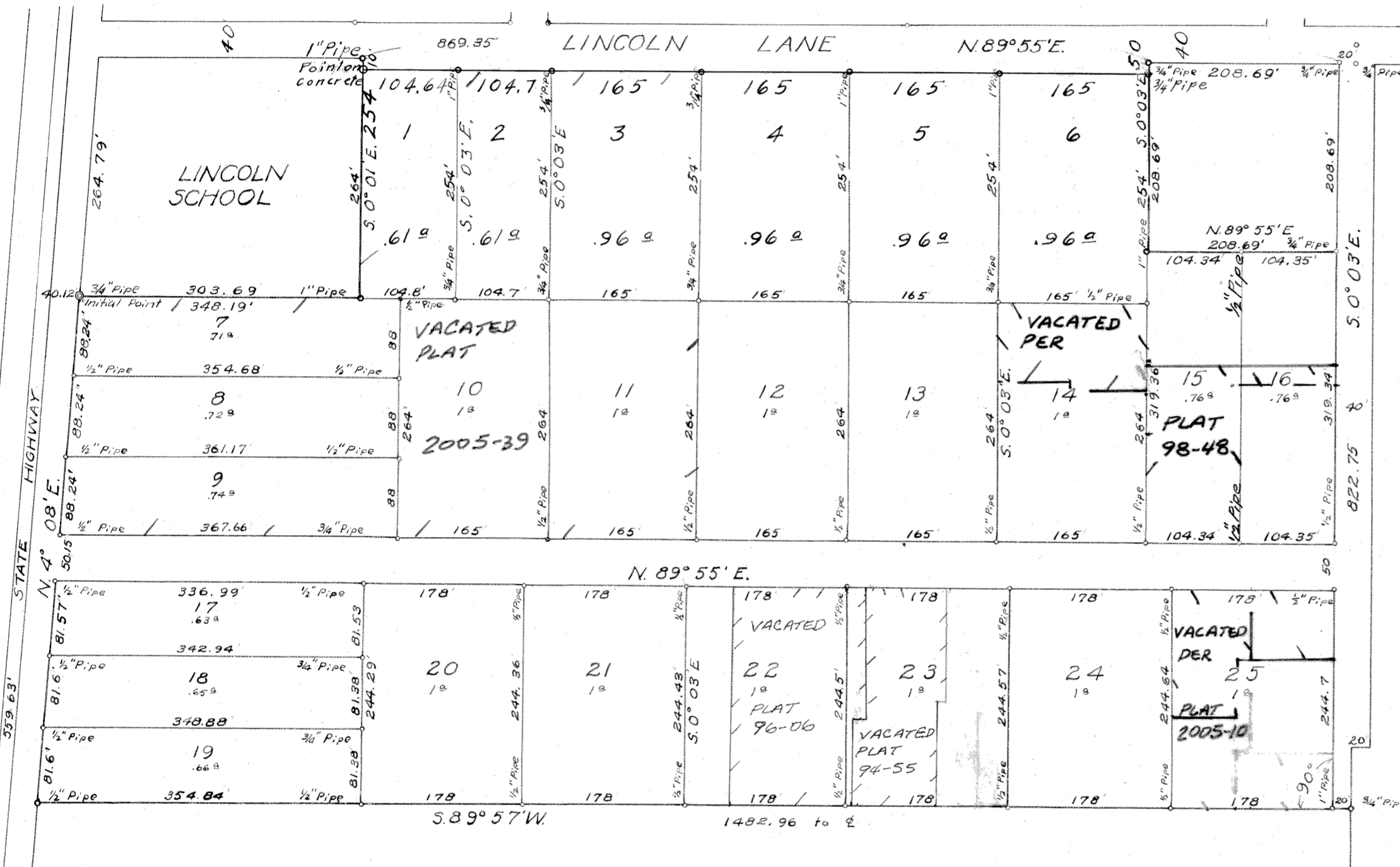
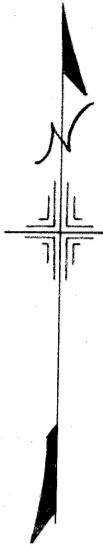
Wm. Harper  
 Sheriff and Tax Collector

# F.L. LILLY TRACTS

## JOSEPH C. ALEXANDER D.L.C 46

SEC II T. 12 S. R. 5 W. WILL. MER.

SCALE 3/4" = 100'



This plat and dedication are approved this 4th day of August A.D. 1941.

H. Cannon  
County Judge

W. Malone  
County Commissioner

C. P. Kyle  
County Commissioner

C. L. Tallman  
County Assessor  
By Bertha S. M. Antye, Deputy  
W. C. Galloway  
County Surveyor

I hereby certify that all taxes and assessments on said property are paid.

W. Harper  
Sheriff and Tax Collector

KNOW ALL MEN BY THESE PRESENTS, That we, Frank Lilly and Minnie M. Lilly, his wife, proprietors and owners of the land described in the Surveyor's affidavit hereon written and shown on the annexed plat of "F.L. LILLY TRACTS" do hereby plat and lay out said tract of land into tracts and roads, the dimensions of which are in feet and as shown on said plat to be "F.L. LILLY TRACTS" said tracts are numbered from 1 to 25 inclusive and the roads are as shown on said plat.

That we dedicate to the use of the public, without reservation or restriction, the roads as shown on said plat.  
IN WITNESS WHEREOF, We, Frank L. Lilly and Minnie M. Lilly, do hereby set our hands and seals this 4th day of August A.D. 1941.

Executed in the presence of  
Esther Allphin Witness  
Lester G. Ockley Witness

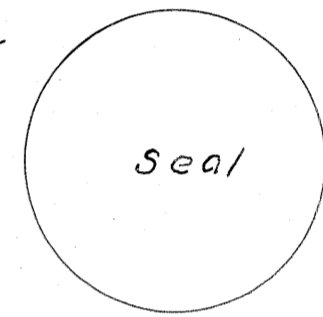
Frank L. Lilly  
Minnie M. Lilly

STATE OF OREGON } ss.  
COUNTY OF BENTON }

BE IT REMEMBERED, That on this 4th day of August A.D. 1941, before me the undersigned, a Notary Public in and for said County and State, personally appeared Frank L. Lilly and Minnie M. Lilly, his wife, who are known to me to be the identical individuals described in and who executed the within dedication and acknowledged to me that they executed the same freely and voluntarily.  
IN TESTIMONY WHEREOF, I have herunto set my hand and Notarial Seal the day and year last above written.

Lester G. Ockley  
Notary Public for Oregon

My commission expires  
November 26, 1941.



STATE OF OREGON } ss.  
COUNTY OF BENTON }

I, W.C. Galloway, being first duly sworn depose and say that I have correctly surveyed and marked with proper monuments the lands represented on the annexed plat; that as an initial point for said survey I drove a galvanized iron pipe 2 inches in diameter and 36 inches in length 6 inches below the surface of the ground said pipe being 2269.6 feet South and 2654.5 feet East of the northwest corner of Joseph C. Alexander D.L.C. #46 T. 12 S. R. 5 W. of the Will. Mer. in Benton County, Oregon, which pipe is on the south line of Lincoln School grounds, 40 feet easterly at right angles to the center line of the pavement in the State Highway, and running thence N. 89° 55' E. 303.69 feet to a 1 inch pipe the southeast corner of said grounds, thence N. 0° 01' W. along the east line of said grounds 264 feet to a 1 inch pipe on the south line of Lincoln Lane, a 40 foot road, thence along south line of said road N. 89° 55' E. 869.35 feet to a 3/4 inch pipe at the northwest corner of a one acre tract, thence S. 0° 03' E. along the west line of said tract 208.69 feet to a 1 inch pipe, thence N. 89° 55' E. along south line of said tract 208.69 feet to a 3/4 inch pipe on the west line of a road, thence N. 0° 03' W. along the east line of said tract and west line of said road 208.69 feet to a 3/4 inch pipe on the south line of Lincoln Lane, thence N. 89° 55' E. 20 feet to a 3/4 inch pipe on the east line of Frank Lilly's land, thence S. 0° 03' E. along the east line of said Lilly's land 822.75 feet to a 3/4 inch pipe, the southeast corner of said land, thence S. 89° 55' W. along south line of said land 1482.96 feet to center line of said pavement, thence N. 4° 08' E. along said center line 559.63 feet, thence N. 89° 55' E. 40.12 feet to beginning. Excepting the following: Beginning at a 1/2 inch pipe 40 feet east at right angles to the center line of the State Highway pavement and 88.24 feet S. 4° 08' W. of the south line of Lincoln School grounds, which pipe is 2357.6 feet South and 2648.1 feet East of the northwest corner of Joseph C. Alexander D.L.C. #46 T. 12 S. R. 5 W. of the Will. Mer. in Benton County, Oregon; and running thence N. 89° 55' E. 354.68 feet to a 1/2 inch pipe, thence S. 0° 03' E. 88 feet to a 1/2 inch pipe, thence S. 89° 55' W. 361.17 feet to a 1/2 inch pipe 40 feet east at right angles to the center line of said pavement, thence N. 4° 08' E. 88.24 feet to the place of beginning, containing .72 of an acre.

W. C. Galloway  
County Surveyor

Subscribed and sworn to before me this 4th day of Aug. A.D. 1941.

A. J. Moore  
County Clerk,  
Benton County, Oregon  
By: E. Wamburg, Deputy.

