

Affidavit of Surveyor

Affidavit of Owner

State of Oregon }
County of Benton } S.S.

I, Otto H. Meyer, being first duly sworn, depose and say that I have correctly surveyed and marked with proper monuments the lands represented on the plat shown herewith, the corners of all lots being marked with iron pipes; that these lands consist of Block 24, "Wells and McElroy's Addition," to the City of Corvallis, Oregon; that as an initial point I set a 2 inch galvanized iron pipe 36 inches long 6 inches below ground at the Northeast corner of said Block 24, which corner is 223.34 feet N 89° 09' W from the Southeast corner of the Jas. L. Mulkey D. L. C. No. 63; and that the boundaries of said Block 24 run from the initial point N 89° 09' W along the South line of said Jas. L. Mulkey D. L. C. 418.47 feet, thence S 0° 36' W 573.25 feet to the centerline of Lincoln Street, thence S 89° 25' E along the centerline of Lincoln Street 417.74 feet, thence N 0° 40' E 571.30 feet to the place of beginning.

Know all men by these presents that we, W. R. Hodges and Ethel Hodges, his wife, proprietors and owners of the lands described in the Surveyor's Affidavit hereon written and shown on the plat of Hodges Addition to Corvallis, Oregon, do hereby plat and lay out said parcel of land into blocks, lots, and streets, the dimensions of which are in feet as shown on said plat of Hodges Addition. Said lots are numbered from 1 to 22 in Block 1 of Hodges Addition and 1 to 10 in Block 2 of Hodges Addition. We dedicate to the use of the public without reservation or restriction the streets shown on said plat.

In witness hereof, W. R. Hodges and Ethel Hodges do hereby set our hands and seals this 5th day of August A.D. 1946.

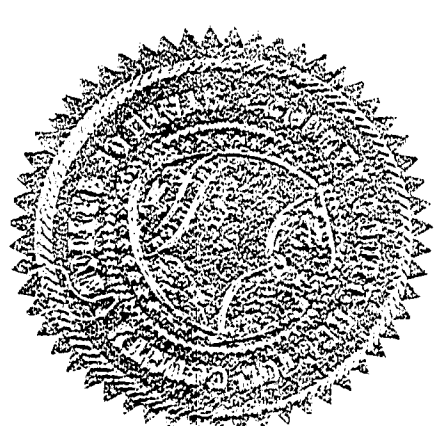
W. R. Hodges Ethel Hodges
Executed in the presence of:
G. L. Cochran Ray W. Jordan
Witness Witness



Otto H. Meyer
Surveyor

State of Oregon }
County of Benton } S.S.

Subscribed and sworn to before me this 3rd day of August A.D. 1946.



G. W. Jordan
County Clerk
Benton County

Be it remembered, that on this 5th day of August A.D. 1946, before me, the undersigned, a Notary Public in and for said County and State, personally appeared W. R. Hodges and Ethel Hodges, who are personally known to me to be the identical individuals named in and who executed the above dedication and acknowledged to me that it was their free act and deed.

In testimony whereof, I have hereunto set my hand and notarial seal the day and year last above written.

HODGES ADDITION
CORVALLIS, OREGON
1 inch = 50 feet

57668
STATE OF OREGON, }
County of Benton, } ss.
I hereby certify that the within instrument was received for record

1946 AUG 15 AM 9 34

and recorded in book
on page 46 Record of
Plats of said County.
Witness my hand and seal of County affixed.
A. J. MOORE
County Clerk.
By Grace Malone
Deputy.

This plat is approved this 31st day of July A. D. 1946.

Geo. A. McKee J. F. Moser
County Judge President, Planning Commission
O. B. Kyli E. Lashin
County Commissioner County Assessor
M. O. Mack W. C. Halloway
County Commissioner County Surveyor

I hereby certify that all taxes and assessments on said property are paid.

Ernest Lilly
Sheriff and Tax Collector

HODGES
ADD.

PLANNING HOLDING CORPORATION • IRVINE, CALIFORNIA
REORDER BY NUMBER 075AR

DRAWING NUMBER

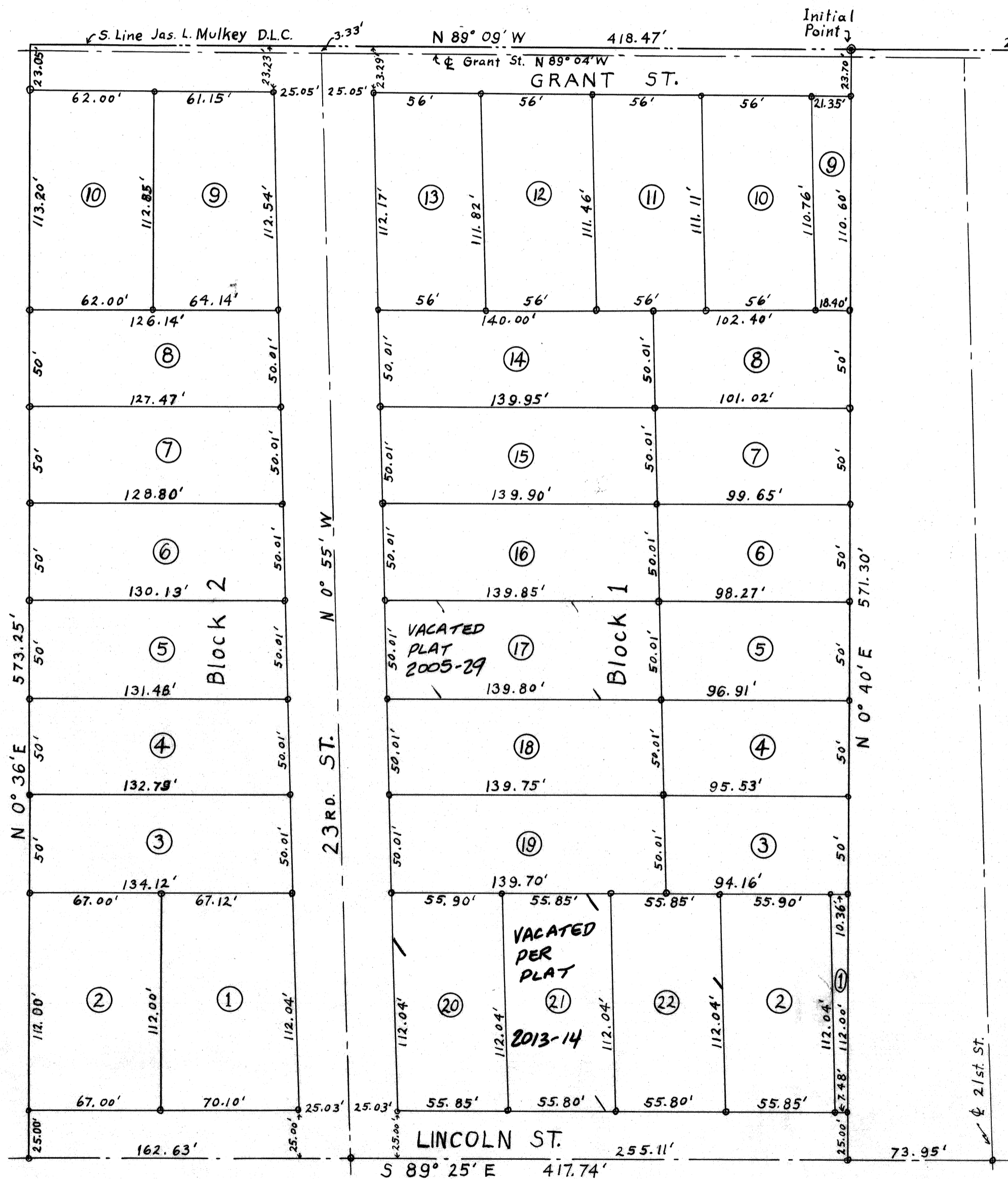
PLAN HOLD CORPORATION • IRVINE, CALIFORNIA
REORDER BY NUMBER 075AR

DRAWING NUMBER

PLAN HOLD CORPORATION • IRVINE, CALIFORNIA
REORDER BY NUMBER 075AR

HODGES
ADD.

PLANNING HOLDING CORPORATION • IRVINE, CALIFORNIA
REORDER BY NUMBER 075AR



HODGES ADDITION
CORVALLIS, OREGON
1 inch = 50 feet

Affidavit of Surveyor

State of Oregon } S. S.
County of Benton }

I, Otto H. Meyer, being first duly sworn, depose and say that I have correctly surveyed and marked with proper monuments the lands represented on the plat shown herewith, the corners of all lots being marked with iron pipes; that these lands consist of Block 24, Wells and McElroy's Addition, to the City of Corvallis, Oregon; that as an initial point I set a 2 inch galvanized iron pipe 36 inches long 6 inches below ground at the Northeast corner of said Block 24, which corner is 223.34 feet N 89° 09' W from the Southeast corner of the Jas. L. Mulkey D. L. C. No. 63; and that the boundaries of said Block 24 run from the initial point N 89° 09' W along the South line of said Jas. L. Mulkey D. L. C. 418.47 feet, thence S 0° 36' W 573.25 feet to the centerline of Lincoln Street, thence S 89° 25' E along the centerline of Lincoln Street 417.74 feet, thence N 0° 40' E 571.30 feet to the place of beginning.



Subscribed and sworn to before me this 3rd day of August A. D. 1946.

Otto H. Meyer

J. Moore
County Clerk
Benton County

Affidavit of Owner

Know all men by these presents that we, W. R. Hodges and Ethel Hodges, his wife, proprietors and owners of the lands described in the Surveyor's Affidavit hereon written and shown on the plat of Hodges Addition to Corvallis, Oregon, do hereby plat and lay out said parcel of land into blocks, lots, and streets, the dimensions of which are in feet as shown on said plat of Hodges Addition. Said lots are numbered from 1 to 22 in Block 1 of Hodges Addition and 1 to 10 in Block 2 of Hodges Addition. We dedicate to the use of the public without reservation or restriction the streets shown on said plat.

In witness hereof, W. R. Hodges and Ethel Hodges do hereby set our hands and seals this 5th day of August A. D. 1946.

W. R. Hodges *Ethel E. Hodges*

Executed in the presence of
E. L. Cochran *Guy D. Jordan*
Witness Witness

State of Oregon } S. S.
County of Benton }

Be it remembered, that on this 5th day of August A. D. 1946, before me, the undersigned, a Notary Public in and for said County and State, personally appeared W. R. Hodges and Ethel Hodges, who are personally known to me to be the identical individuals named in and who executed the above dedication and acknowledged to me that it was their free act and deed.

In testimony whereof, I have hereunto set my hand and notarial seal the day and year last above written.

G. W. Jordan
Notary Public for Oregon
My commission expires Nov. 5th 1948

This plat is approved this 31st day of July A. D. 1946.

Geo. D. McKee *J. F. Moser*
County Judge President, Planning Commission

O. B. Gyle *E. B. Larkin*
County Commissioner County Assessor

M. O. Mack *W. J. Galloway*
County Commissioner County Surveyor

I hereby certify that all taxes and assessments on said property are paid.

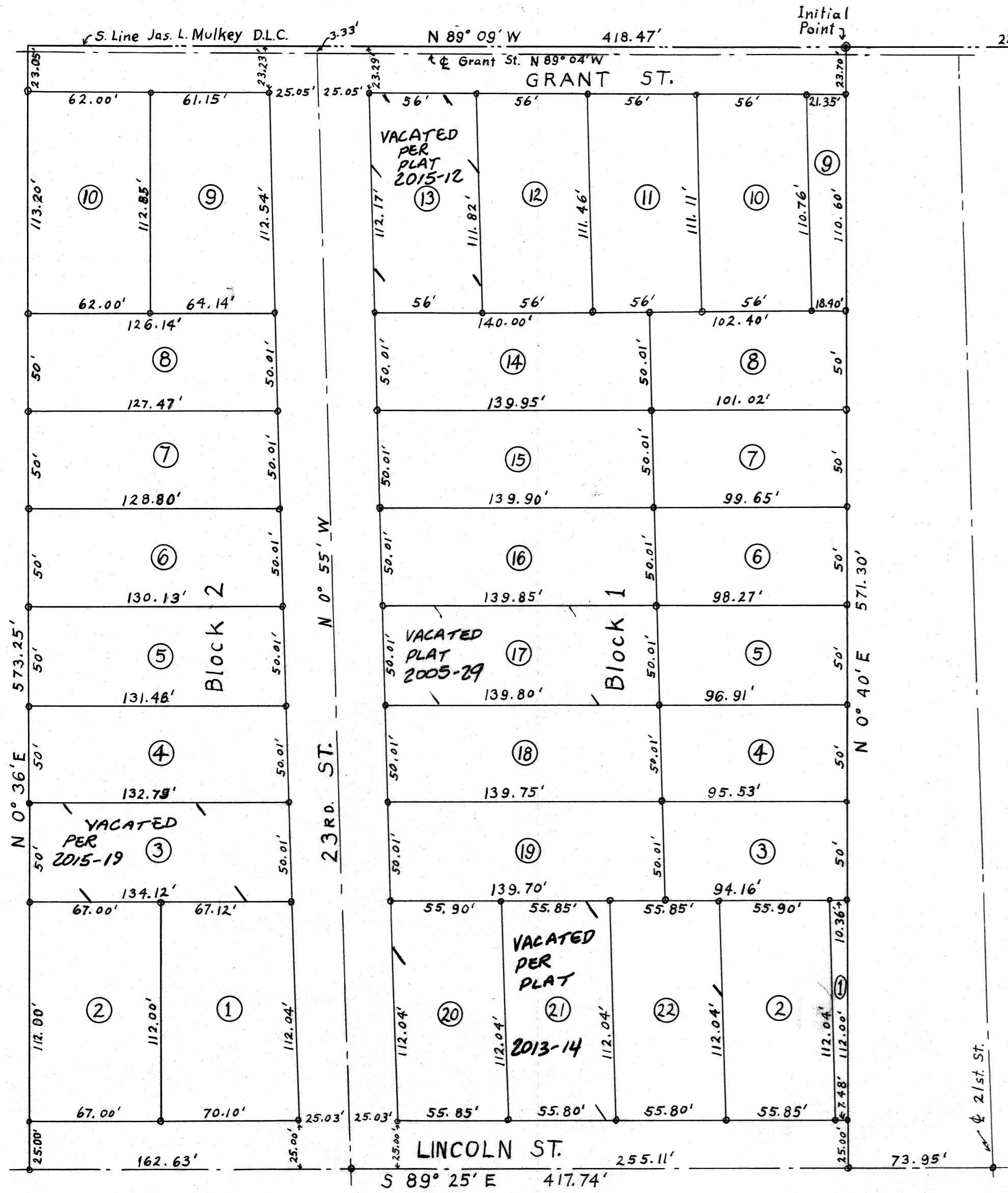
C. M. Gilly
Sheriff and Tax Collector

PLANNED HOLD CORPORATION • IRVINE, CALIFORNIA
ORDER BY NUMBER 075AR

PLANNED HOLD CORPORATION • IRVINE, CALIFORNIA
ORDER BY NUMBER 075AR

PLANNED HOLD CORPORATION • IRVINE, CALIFORNIA
ORDER BY NUMBER 075AR

PLANNED HOLD CORPORATION • IRVINE, CALIFORNIA
ORDER BY NUMBER 075AR



Affidavit of Surveyor

State of Oregon } S. S.
County of Benton }

I, Otto H. Meyer, being first duly sworn, depose and say that I have correctly surveyed and marked with proper monuments the lands represented on the plat shown herewith, the corners of all lots being marked with iron pipes; that these lands consist of Block 24, Wells and McElroy's Addition, to the City of Corvallis, Oregon; that as an initial point I set a 2 inch galvanized iron pipe 36 inches long 6 inches below ground at the Northeast corner of said Block 24, which corner is 223.34 feet N 89° 09' W from the Southeast corner of the Jas. L. Mulkey D. L. C. No. 63; and that the boundaries of said Block 24 run from the initial point N 89° 09' W along the South line of said Jas. L. Mulkey D. L. C. 418.47 feet, thence S 0° 36' W 573.25 feet to the centerline of Lincoln Street, thence S 89° 25' E along the centerline of Lincoln Street 417.74 feet, thence N 0° 40' E 571.30 feet to the place of beginning.



Otto H. Meyer

Subscribed and sworn to before me this 3rd day of August A. D. 1946.

[Signature]
County Clerk
Benton County

Affidavit of Owner

Know all men by these presents that we, W. R. Hodges and Ethel Hodges, his wife, proprietors and owners of the lands described in the Surveyor's Affidavit hereon written and shown on the plat of Hodges Addition to Corvallis, Oregon, do hereby plat and lay out said parcel of land into blocks, lots, and streets, the dimensions of which are in feet as shown on said plat of Hodges Addition. Said lots are numbered from 1 to 22 in Block 1 of Hodges Addition and 1 to 10 in Block 2 of Hodges Addition. We dedicate to the use of the public without reservation or restriction the streets shown on said plat.

In witness hereof, W. R. Hodges and Ethel Hodges do hereby set our hands and seals this 5th day of August A.D. 1946.

W. R. Hodges *Ethel E. Hodges*
Executed in the presence of
E. L. Cochran *Clay W. Jordan*
Witness Witness

State of Oregon } S. S.
County of Benton }

Be it remembered, that on this 5th day of August A. D. 1946, before me, the undersigned, a Notary Public in and for said County and State, personally appeared W. R. Hodges and Ethel Hodges, who are personally known to me to be the identical individuals named in and who executed the above dedication and acknowledged to me that it was their free act and deed.

In testimony whereof, I have hereunto set my hand and notarial seal the day and year last above written.

Clay W. Jordan
Notary Public for Oregon
My commission expires Nov. 5th 1948

HODGES ADDITION
CORVALLIS, OREGON
1 inch = 50 feet

This plat is approved this 31st day of July A. D. 1946.

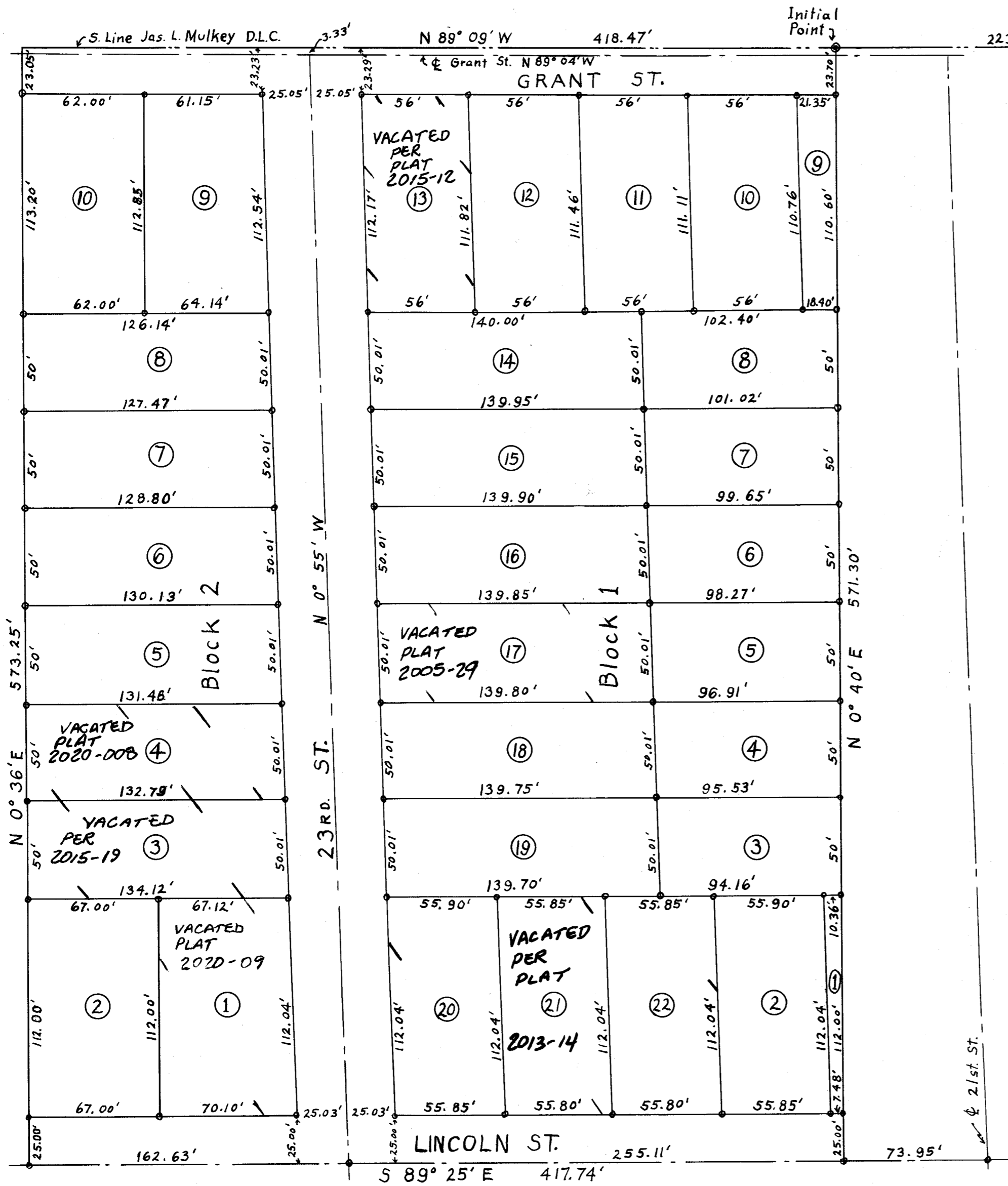
Geo. J. McKee *F. J. Moser*
County Judge President, Planning Commission

O. B. Kyle *E. E. Laskin*
County Commissioner County Assessor

M. O. Mack *W. J. Galloway*
County Commissioner County Surveyor

I hereby certify that all taxes and assessments on said property are paid.

Clay W. Jordan
Sheriff and Tax Collector



HODGES ADDITION
CORVALLIS, OREGON
1 inch = 50 feet

Affidavit of Surveyor

State of Oregon } S. S.
County of Benton }

I, Otto H. Meyer, being first duly sworn, depose and say that I have correctly surveyed and marked with proper monuments the lands represented on the plat shown herewith, the corners of all lots being marked with iron pipes; that these lands consist of Block 24, Wells and McElroy's Addition, to the City of Corvallis, Oregon; that as an initial point I set a 2 inch galvanized iron pipe 36 inches long 6 inches below ground at the Northeast corner of said Block 24, which corner is 223.34 feet N 89° 09' W from the Southeast corner of the Jas. L. Mulkey D. L. C. No. 63; and that the boundaries of said Block 24 run from the initial point N 89° 09' W along the South line of said Jas. L. Mulkey D. L. C. 418.47 feet, thence S 0° 36' W 573.25 feet to the centerline of Lincoln Street, thence S 89° 25' E along the centerline of Lincoln Street 417.74 feet, thence N 0° 40' E 571.30 feet to the place of beginning.



Otto H. Meyer

Subscribed and sworn to before me this 3rd. day of August A. D. 1946.

J. Moore
County Clerk
Benton County

Affidavit of Owner

Know all men by these presents that we, W. R. Hodges and Ethel Hodges, his wife, proprietors and owners of the lands described in the Surveyor's Affidavit hereon written and shown on the plat of Hodges Addition to Corvallis, Oregon, do hereby plat and lay out said parcel of land into blocks, lots, and streets, the dimensions of which are in feet as shown on said plat of Hodges Addition. Said lots are numbered from 1 to 22 in Block 1 of Hodges Addition and 1 to 10 in Block 2 of Hodges Addition. We dedicate to the use of the public without reservation or restriction the streets shown on said plat.

In witness hereof, W. R. Hodges and Ethel Hodges do hereby set our hands and seals this 5th day of August A.D. 1946.

W. R. Hodges *Ethel E. Hodges*

Executed in the presence of
E. L. Cochran *Guy W. Jordan*
Witness Witness

State of Oregon } S.S.
County of Benton }

Be it remembered, that on this 5th day of August A.D. 1946, before me, the undersigned, a Notary Public in and for said County and State, personally appeared W. R. Hodges and Ethel Hodges, who are personally known to me to be the identical individuals named in and who executed the above dedication and acknowledged to me that it was their free act and deed.

In testimony whereof, I have hereunto set my hand and notarial seal the day and year last above written.

G. W. Jordan
Notary Public for Oregon
My commission expires Nov. 5th 1946

This plat is approved this 31st day of July A. D. 1946.

Geo. D. McKee *J. F. Moser*
County Judge President, Planning Commission

O. R. Kyle *E. Barkin*
County Commissioner County Assessor

M. O. Mack *W. J. Galloway*
County Commissioner County Surveyor

I hereby certify that all taxes and assessments on said property are paid.

C. W. Lilly
Sheriff and Tax Collector