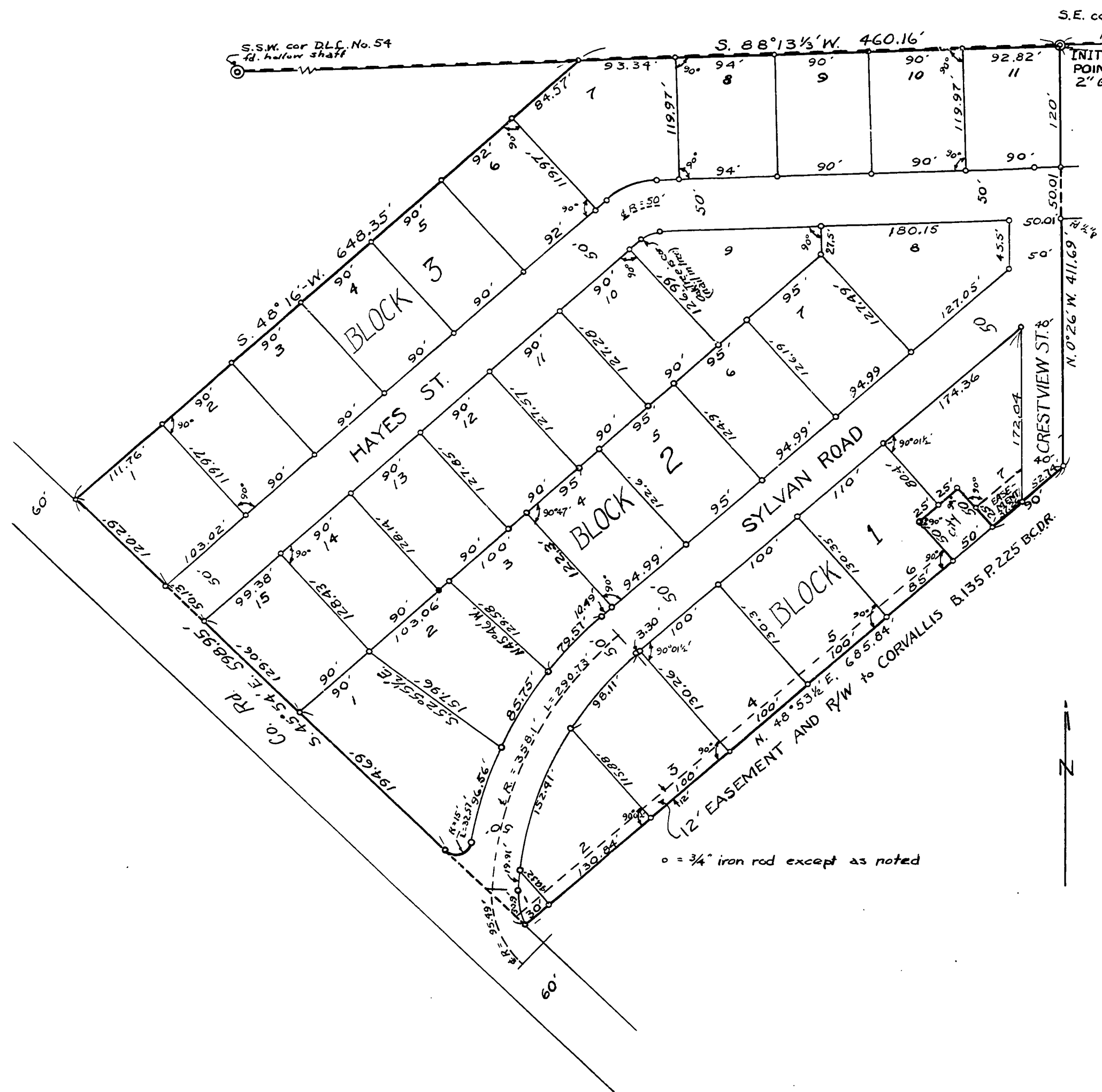


SYLVAN ACRES ADD'N.

J.P. FRIEDLEY D.L.C. No. 62, T.11S., R.5 W., Will. Mer.
CORVALLIS, OREGON

SUPPLEMENTAL PLAT OF BLOCKS 10 & 11 WELLS ADD'N., BENTON COUNTY, OREGON

Scale: 1" = 100'



KNOW ALL MEN BY THESE PRESENTS that we, George B. Coon and Clara G. Coon, his wife, proprietors and owners of the land described in the surveyors affidavit hereon written and shown on the annexed plat of Sylvan Acres Addn. hereby said plat to be known as Sylvan Acres Addn. The blocks are numbered 1 to 3. The lots are numbered and the streets are named as shown on said plat.

That we dedicate to the use of the public, without reservation or restriction, the streets shown on said plat.

IN WITNESS WHEREOF, we, George B. Coon and Clara G. Coon, his wife, do hereby set our hands and seals this 13th day of May, A.D. 1953.

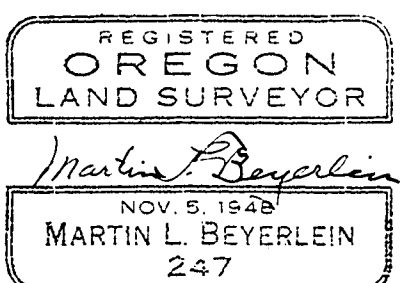
George B. Coon Seal. Clara G. Coon Seal.
W. H. Taber Witness. Edmund J. Smith Witness.

STATE OF OREGON) s.s.
 COUNTY OF BENTON) s.s.
 BE IT REMEMBERED that on this 13th day of May, A.D., 1953, before me, the undersigned, a Notary Public in and for said County and State, personally appeared George B. Coon and Clara G. Coon, his wife, who are known to me to be the identical individuals named in and who executed the within dedication and acknowledged to me that they executed the same freely and voluntarily.

IN WITNESS WHEREOF I have hereunto set my hand and Notarial Seal, the day and year last above written.

Paul E. Huberman Notary Public for Oregon. My Commission expires Oct 4, 1953

STATE OF OREGON) s.s.
 COUNTY OF BENTON) s.s.
 I, Martin L. Beyerlein, being first duly sworn, depose and say that I have correctly surveyed and marked with proper monuments the lands represented on the plat shown hereon; that as an Initial Point for said survey I drove a galvanized iron pipe 2" in diameter and 36" long, 6" below the surface of the ground; said Initial Point is the northeast corner of Block 10 Wells Addition and is on the Claim Line 1250 ft. S. 88°13' W. from the S.E. corner of the John D. Mulkey D.L.C. No. 54, T. 11 S., R. 5 W., W.M.; running thence along the boundary lines of Blocks 10 and 11, Wells Addition, S. 88°13' W. 460.16 ft. to the block corner, S. 48°16' W. 648.35 ft., S. 45°54' E. 598.95 ft., N. 48°53' E. 685.84 ft., N. 0°26' W. 411.69 ft. to said Initial Point. Excepting that certain parcel of land Deeded to The City of Corvallis as described in Deed recorded in Book 135 Page 225 Benton County Deed Records, Benton County, Oregon.



Subscribed and sworn to before me this 4th day of May, A.D. 1953.
Ralph P. Schindler
 County Clerk, Benton County, Oregon.

This plat and dedication are approved this 12th day of June, A.D. 1953.
Ed J. Mabel County Judge.
Walter Schmidt County Commissioner.
Aubrey Bond County Commissioner.
W. J. Smith City Engineer.
F. J. Moore Planning Commission, President.
W. J. Smith Planning Commission, Secretary.
Omie Eckstein County Assessor.

I hereby certify that all taxes and assessments on said property are paid.
George Dimerville City Recorder
Ed J. Mabel Sheriff and Tax Collector

STATE OF OREGON, 35201
 County of Benton, 35201
 I hereby certify that the within instrument was received for record.

1953 JUN 23 AM 9 17

and recorded in book
 on page 18 Record of
Oliver of said County.
 WITNESSED BY HAND AND SEAL OF COUNTY ATTORNEY
Ralph P. Schindler
 County Clerk
Ed J. Mabel
 Sheriff and Tax Collector