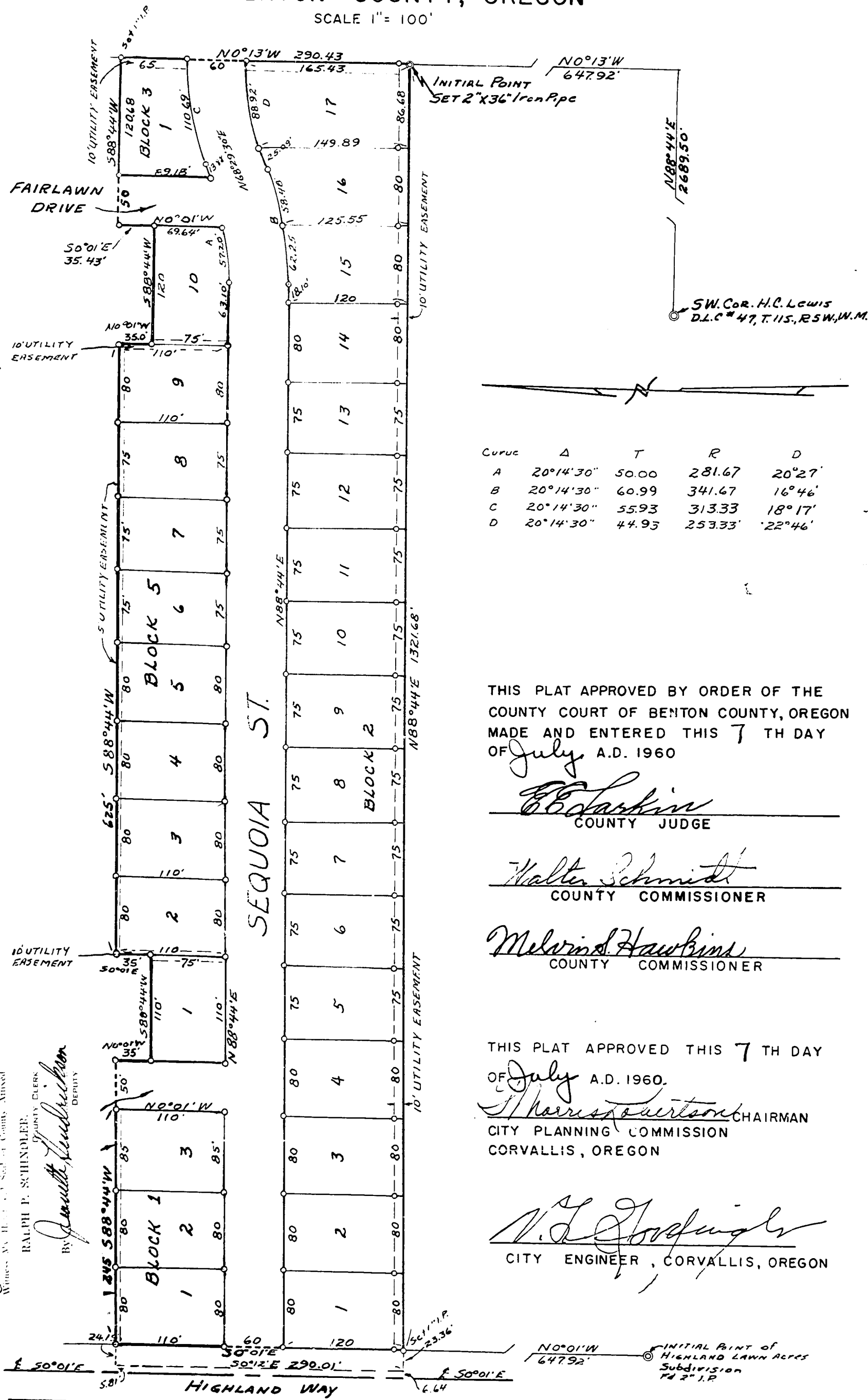


HIGHLAND MANOR SUBDIVISION
 BLOCK 2 & PART OF BLOCKS 1, 3 & 5
 H.C. LEWIS D.L.C. No. 47, T.11S., R. 5W., W.M.
 BENTON COUNTY, OREGON

SCALE 1" = 100'



Curve	A	T	R	D
A	20°14'30"	50.00	281.67	20°27'
B	20°14'30"	60.99	341.67	16°46'
C	20°14'30"	55.93	313.33	18°17'
D	20°14'30"	44.93	253.33	22°46'

THIS PLAT APPROVED BY ORDER OF THE COUNTY COURT OF BENTON COUNTY, OREGON MADE AND ENTERED THIS 7 TH DAY OF July A.D. 1960

E. B. Larkin
 COUNTY JUDGE

Walter Schmidt
 COUNTY COMMISSIONER

Melvin Hawkins
 COUNTY COMMISSIONER

THIS PLAT APPROVED THIS 7 TH DAY OF July A.D. 1960

Thomas Stewart
 CHAIRMAN
 CITY PLANNING COMMISSION
 CORVALLIS, OREGON

V. J. Hodgins
 CITY ENGINEER, CORVALLIS, OREGON

DEDICATION

KNOW ALL MEN BY THESE PRESENTS:

THAT WE, TENCO, INC., HAVE THIS DAY MADE AND DO HEREBY MAKE, EXECUTE AND DECLARE THAT WE HAVE LAID OUT HIGHLAND MANOR SUBDIVISION, BLOCK 2 & PART OF BLOCKS 1, 3 & 5, BENTON COUNTY, OREGON; CONSISTING OF BLOCKS, LOTS, AND STREETS OF THE SIZE, SHAPE AND DIMENSIONS AS SHOWN ON THIS PLAT, AND THAT THE STREETS AS SHOWN ARE HEREBY CONVEYED, SET APART AND DEDICATED TO THE PUBLIC FOREVER WITHOUT RESERVATION OR RESTRICTION WHATEVER.

THAT THE UTILITY EASEMENTS AS SHOWN ON THIS PLAT SHALL BE CONSIDERED AS PART OF THIS DEDICATION. IN WITNESS WHEREOF WE HAVE HEREWITH SET OUR HANDS AND SEALS THIS 7 DAY OF July A.D. 1960.

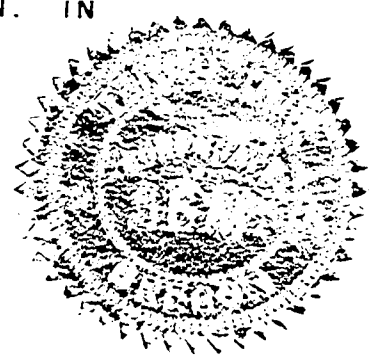
William F. Raw
 PRESIDENT

George F. Hise
 SECRETARY

STATE OF OREGON
 COUNTY OF BENTON

ON THIS 7 TH DAY OF July A.D. 1960 PERSONALLY APPEARED BEFORE ME, A NOTARY PUBLIC FOR AND IN SAID COUNTY, THE WITHIN NAMED, WILLIAM F. RAW, PRESIDENT, AND GEORGE F. HISE, SECRETARY, TO ME KNOWN TO BE THE IDENTICAL PERSONS DESCRIBED IN AND WHO EXECUTED THE FOREGOING DEDICATION AND WHO ACKNOWLEDGED TO ME THAT THEY EXECUTED THE SAME FREELY AND VOLUNTARILY FOR USES AND PURPOSES THEREIN NAMED.

Walter Schmidt
 NOTARY PUBLIC FOR OREGON
 MY COMMISSION EXPIRES 6/30/63

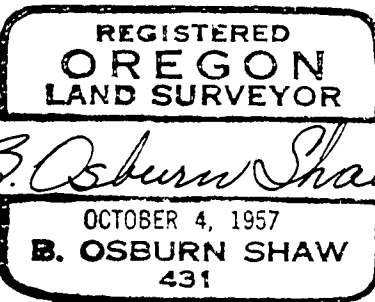


SURVEYORS CERTIFICATE

STATE OF OREGON
 COUNTY OF BENTON

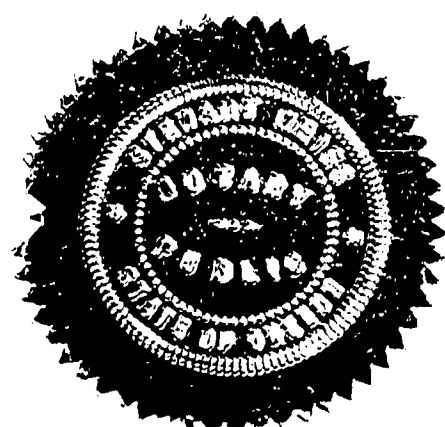
I, B. OSBURN SHAW, BEING FIRST DULY SWORN SAY THAT I HAVE CORRECTLY SURVEYED, AND MARKED WITH PROPER MONUMENTS, THE LANDS AS REPRESENTED ON THIS PLAT AND THAT I HAVE SET A MONUMENT INDICATING THE INITIAL POINT, OF SAID SURVEY AS FOLLOWS: SET AN IRON PIPE, 2" INCHES IN DIAMETER AND 36" LONG. SAID INITIAL POINT BEING N88°44'E, 2689.50 FEET AND N0°13'W, 647.92 FEET FROM THE SOUTHWEST CORNER OF THE HEMAN C. LEWIS D.L.C. No. 47 IN TOWNSHIP 11 SOUTH, RANGE 5 WEST, W.M. IN BENTON COUNTY, OREGON; RUNNING THENCE N0°13'W, 290.43 FEET; THENCE S88°44'W, 170.68 FEET; THENCE S0°01'E, 35.43 FEET; THENCE S88°44'W, 12 0.00 FEET; THENCE N0°01'W, 35.00 FEET; THENCE S88°44'W, 625.00 FEET; THENCE S0°01'E, 35.00 FEET; THENCE S88°44'W, 110.00 FEET; THENCE N0°01'W, 35.00 FEET; THENCE S88°44'W, 319.19 FEET; THENCE S0°12'E, 290.01 FEET; THENCE N88°44'E, 1345.04 FEET TO THE POINT OF BEGINNING.

B. Osburn Shaw
 REGISTERED LAND SURVEYOR



SUBSCRIBED AND SWORN TO ME THIS 20 TH DAY OF July A.D. 1960.

Edward Weimer
 NOTARY PUBLIC FOR OREGON
 MY COMMISSION EXPIRES 1-3-63



THIS PLAT APPROVED THIS 8 TH DAY OF August A.D. 1960.

Richard Wegerer
 COUNTY ASSESSOR

I HEREBY CERTIFY THAT ALL TAXES ON THE WITHIN DESCRIBED PROPERTY ARE PAID AS OF THIS 30 TH DAY OF June A.D. 1960.

George Simerville
 COUNTY SHERIFF

I, RALPH P. SCHINDLER, HEREBY CERTIFY THAT THE WITHIN WAS RECEIVED AND DULY RECORDED BY ME IN BENTON COUNTY RECORDS, BOOK OF PLATS VOLUME 6 PAGE 11 ON THE 15 TH DAY OF August A.D. 1960.

Ralph P. Schindler
 COUNTY RECORDER

I Herby Certify that all assessments on the within described are paid as of this 29 th day of July A.D. 1960

George Simerville
 City Recorder

and received by Book
 on page 11
 Record of
 County of Benton
 Volume 6, Page 11
 Witness: R. P. Schindler
 County Recorder
 Ralph P. Schindler
 County Recorder