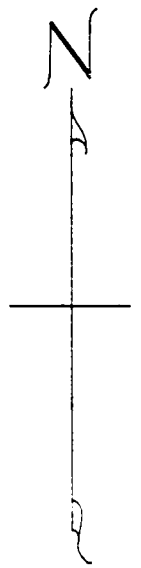
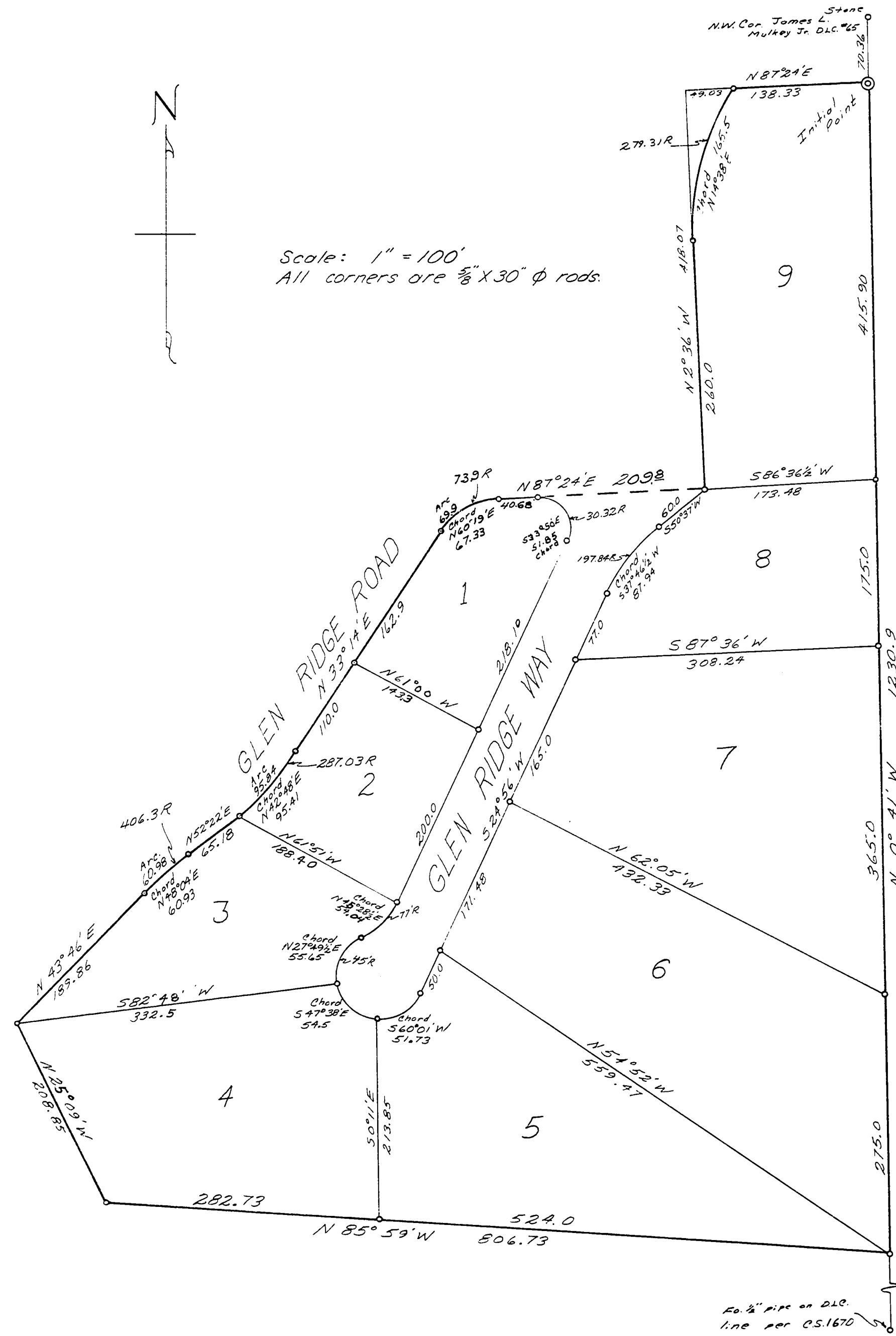


# GLEN RIDGE ESTATES

## D.L.C. 65, T.11S., R.5W., W.M., BENTON COUNTY, OREGON



Scale: 1" = 100'  
All corners are 3/8" x 30" phi rods.



I, Bert W. Udell, certify that I have correctly surveyed and marked with proper monuments the lands represented on this plat; that as an initial point for this survey I drove a galvanized pipe, 2 inches in diameter and 36 inches in length, 6 inches below the surface of the ground at a point on the west line of and S 0° 41' E 70.36 feet from the northwest corner of the James L. Mulkey Jr. D.L.C. #65 in T.11S., R.5W. of Willamette Meridian.

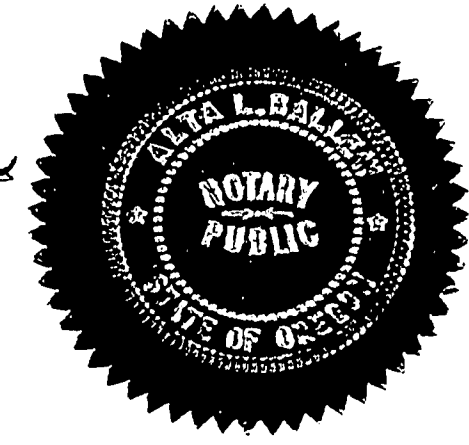
Beginning at said initial point and running thence S 0° 41' E along the west line of said D.L.C. 1230.9 feet; thence N 85° 59' W 806.73 feet; thence N 25° 09' W 208.85 feet; thence N 43° 46' E 189.86 feet; thence along a 406.3 foot radius curve to the

right 60.98 feet (the long chord bears N 48° 04' E 60.93 feet); thence N 52° 22' E 65.18 feet; thence along a 274.13 foot radius curve to the left 95.84 feet (the long chord bears N 42° 48' E 95.41 feet); thence N 33° 14' E 272.9 feet; thence along a 73.9 foot radius curve to the right 69.9 feet (the long chord bears N 60° 19' E 61.33 feet); thence N 81° 24' E 209.8 feet; thence N 2° 36' W 260 feet; thence along a 273.31 foot radius curve to the right 168.02 feet (the long chord bears N 14° 38' E 165.5 feet); thence N 87° 24' E 138.33 feet to the place of beginning.

Bert W. Udell

Subscribed and sworn to me this 23<sup>rd</sup> day of January 1964.

Alta L. Bassow  
Notary Public  
My commission expires JUNE 8, 1966



Know all men by these presents that we, CHARLES L. SCHROFF and MARY JANE SCHROFF, husband and wife, and ROBERT O'DONNELL and BERNELL O'DONNELL, husband and wife, owners of the lands described and shown hereon, have caused this land to be surveyed and plotted as shown hereon, and hereby dedicate the street as shown hereon to the public use forever without reservation or restriction.

In witness hereof, we do hereby set our hands and seals this 28<sup>th</sup> day of January 1964.

Charles L. Schroff Robert E. O'Donnell  
Mary Jane Schroff Bernell O'Donnell

On the 28<sup>th</sup> day of January, 1964, before me appeared CHARLES L. SCHROFF, MARY JANE SCHROFF, ROBERT O'DONNELL, and BERNELL O'DONNELL who are personally known to me and duly sworn, did say that they are the owners of the land described hereon and acknowledge that the dedication was their free act and deed.

In witness thereof, I have hereunto set my hand and notarial seal the day and year last written above.

Luanne D. Bayless  
Notary Public  
My commission expires 9-4-67

STATE OF OREGON )  
County of Benton ) ss.  
I hereby certify that the within instrument was received for record.  
1964 FEB 10 AM 9 34

This plat and dedication approved this 6<sup>th</sup> day of February, 1964.

Walter Schmidt County Judge  
Melvin S. Hawkins County Commissioner  
Charles L. Anderson County Assessor  
Curtis C. Hanson County Surveyor  
Thomas Robertson President, Planning Commission  
V.E. Jones Secretary, Planning Commission

and recorded in book 6 on page 42 Record of said county  
Witness My Hand and Seal of County Clerk  
RALPH P. SCHINDLER  
County Clerk

I hereby certify that all taxes and assessments on said property are paid.  
Le. E. Peam  
Sheriff and Tax Collector

2 1/2" pipe on D.L.C. line per C.S.1670