

This plat and dedication approved this 6th day of Dec., 1968

I hereby certify that all taxes and assessments on said property are paid to and including June 30, 1969

[Signature]
County Judge

[Signature]
Sheriff and Tax Collector

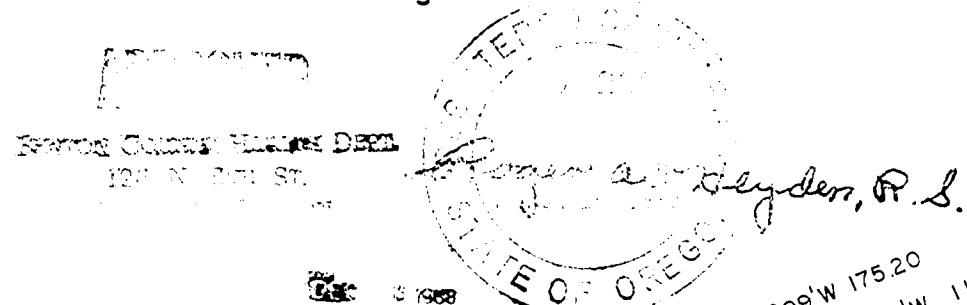
[Signature]
County Commissioner

[Signature]
County Assessor

[Signature]
County Commissioner

[Signature]
Planning Commission

[Signature]
County Surveyor



VINEYARD MOUNTAIN

SECTIONS 2,3,10&11

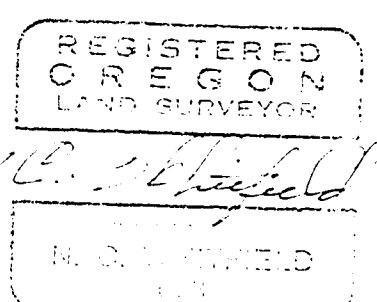
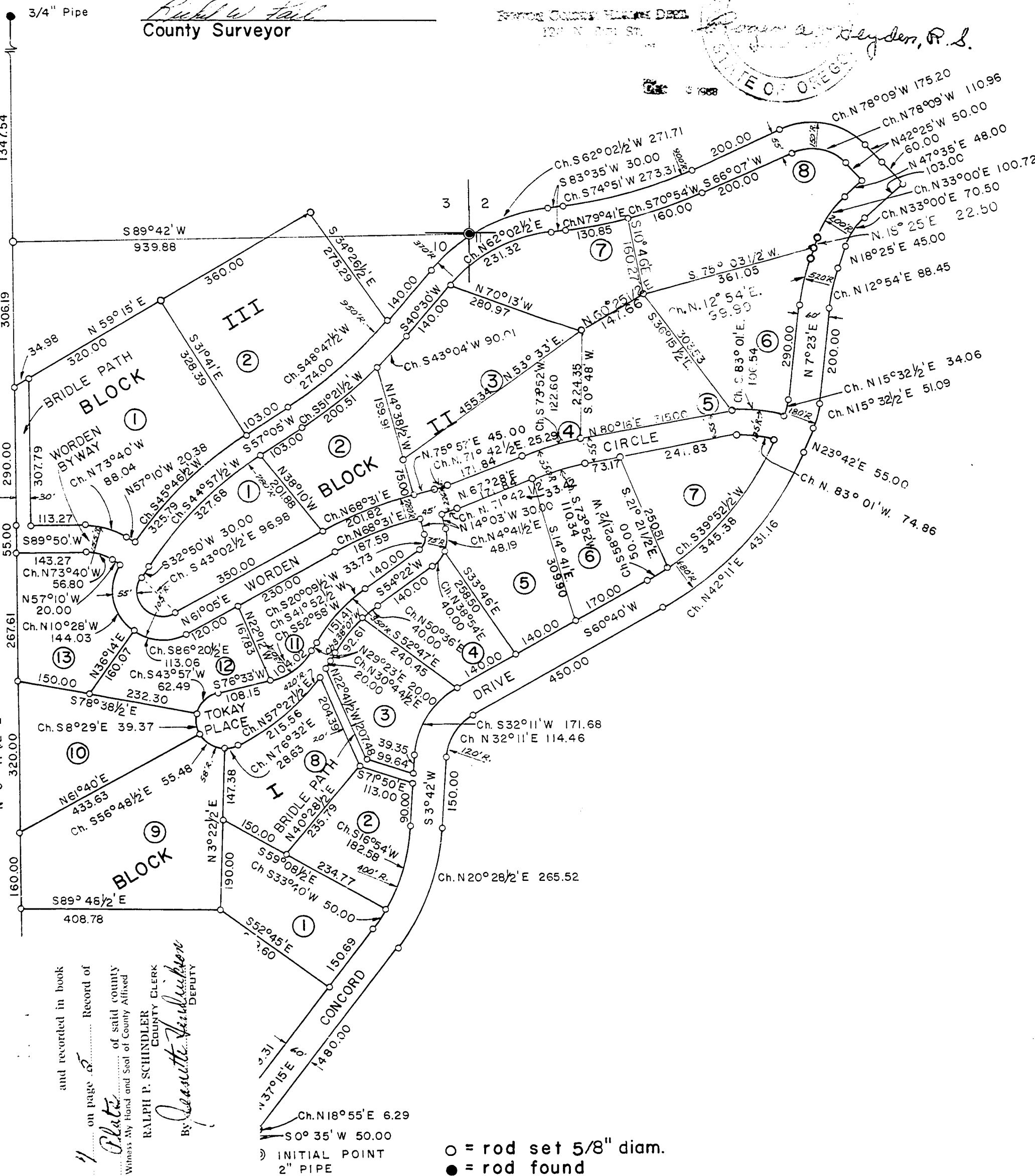
T. 11 S., R. 5 W., W.B.&M.

BENTON COUNTY, OREGON

SCALE 1" = 200' OCTOBER 1968



I, N. C. Whitfield certify that I have correctly surveyed and marked with proper monuments the lands represented on this plat and as an initial point for this survey I drove a galvanized iron pipe, 2 inches in diameter and 36 inches long, 6 inches below the surface of the ground which initial point is S 89°42' W, 939.88 feet, S 0°11' W 1918.80 feet, S 88°45-1/2' E 11.82 feet and S 89°25' E 468.18 feet from the section corner of 2,3,10 & 11, T. 11 S., R. 5 W., W. B. & M., Benton County, Oregon, thence N 0°35' E 50.00 feet, thence on a 10 foot radius curve right the long chord of which is N 18°55' E 6.29 feet, thence N 37°15' E 480.00 feet, thence on a 460 foot radius curve left the long chord of which is N 20°28-1/2' E 265.52 feet, thence N 3°42' E 150.00 feet, thence on a 120 foot radius curve right the long chord of which is N 32°11' E 114.46 feet, thence N 60°40' E 450.00 feet, thence on a 680 foot radius curve left the long chord of which is N 42°11' E 431.16 feet, thence N 23°42' E 55.00 feet, thence on a 180 foot radius curve left the long chord of which is N 15°32-1/2' E 51.09 feet, thence N 7°23' E 200.00 feet, thence on a 460 foot radius curve right the long chord of which is N 12°54' E 88.45 feet, thence N 18°25' E 45.00 feet, thence on a 140 foot radius curve right the long chord of which is N 33°00' E 70.50 feet, thence N 47°35' E 103.00 feet, thence N 42°25' W 110.00 feet, thence on a 150 foot radius curve right the long chord of which is N 78°09' W 175.20 feet, thence S 66°07' W 200.00 feet, thence on a 900 foot radius curve right the long chord of which is S 74°51' W 273.31 feet, thence S 83°35' W 30.00 feet, thence on a 370 foot radius curve left the long chord of which is S 62°02-1/2' W 271.71 feet, thence S 40°30' W 140.00 feet, thence N 34°26-1/2' W 275.29 feet, thence S 59°15' W 714.98 feet, thence S 0°11-1/2' W 1092.61 feet, thence S 89°48-1/2' E 408.78 feet, thence S 52°45' E 279.60 feet, thence S 37°15' W 329.31 feet, thence on a 70 foot radius curve left the long chord of which is S 18°55' W 44.04 feet, thence S 0°35' W 50.00 feet, thence S 89°25' E 60.00 feet, all of which is in the sections described above.



Subscribed and sworn to me on this 5th day of November, 1968

[Signature]
Notary Public For Oregon
My Commission Expires 12-12-71

Know all men by these presents that we, Vineyard Mountain Inc., proprietors and owners of the lands described and shown hereon, have caused this land to be and platted as shown hereon, and hereby dedicate to the public use forever without reservation or restriction the streets, as shown hereon.
In witness hereof, we do hereby set our hands and seals this 6th day of December, 1968.

[Signature] (Seal)

[Signature]
witness

[Signature] (Seal)

[Signature]
witness

On the 6th day of November, 1968 before me did appear who are personally known to me and duly sworn, did say that they are the owners of the lands described hereon and acknowledge that the dedication was their free act and deed.

In witness whereof, I have hereunto set my hand and seal this 6th day of November, 1968.

[Signature]
Notary Public For Oregon
My Commission Expires 12-12-71

and recorded in book
on page 5
of said county
Woods by Hand and Seal of County Affixed
RALPH P. SCHINDLER
COUNTY CLERK
DEPUTY
[Signature]

○ = rod set 5/8" diam.
● = rod found

