

This plat and dedication approved this 15 day of August, 1973.

Janice Linn
County Commissioner

Larry Callahan
County Commissioner

William H. Hootch
County Commissioner

Rudolf J. Fair 9-17-73
County Surveyor

James Linn
Planning Commission

W. J. P. 9-17-73
County Engineer

I hereby certify that all taxes and assessments on said property are paid to and including 1973, 1973.

James Linn
Sheriff and Tax Collector

William H. Hootch
County Assessor

EACH BUILDING SITE WILL BE SUBJECT TO AN INDIVIDUAL EVALUATION REGARDING SUBSURFACE SEWAGE DISPOSAL.
Roger H. Hootch
Roger Hootch, R.S. 9-25-73
Senior Sanitarian

VINEYARD MOUNTAIN FOURTH ADDITION

SECTION 2

T. 11 S., R. 5 W., W. B. & M.

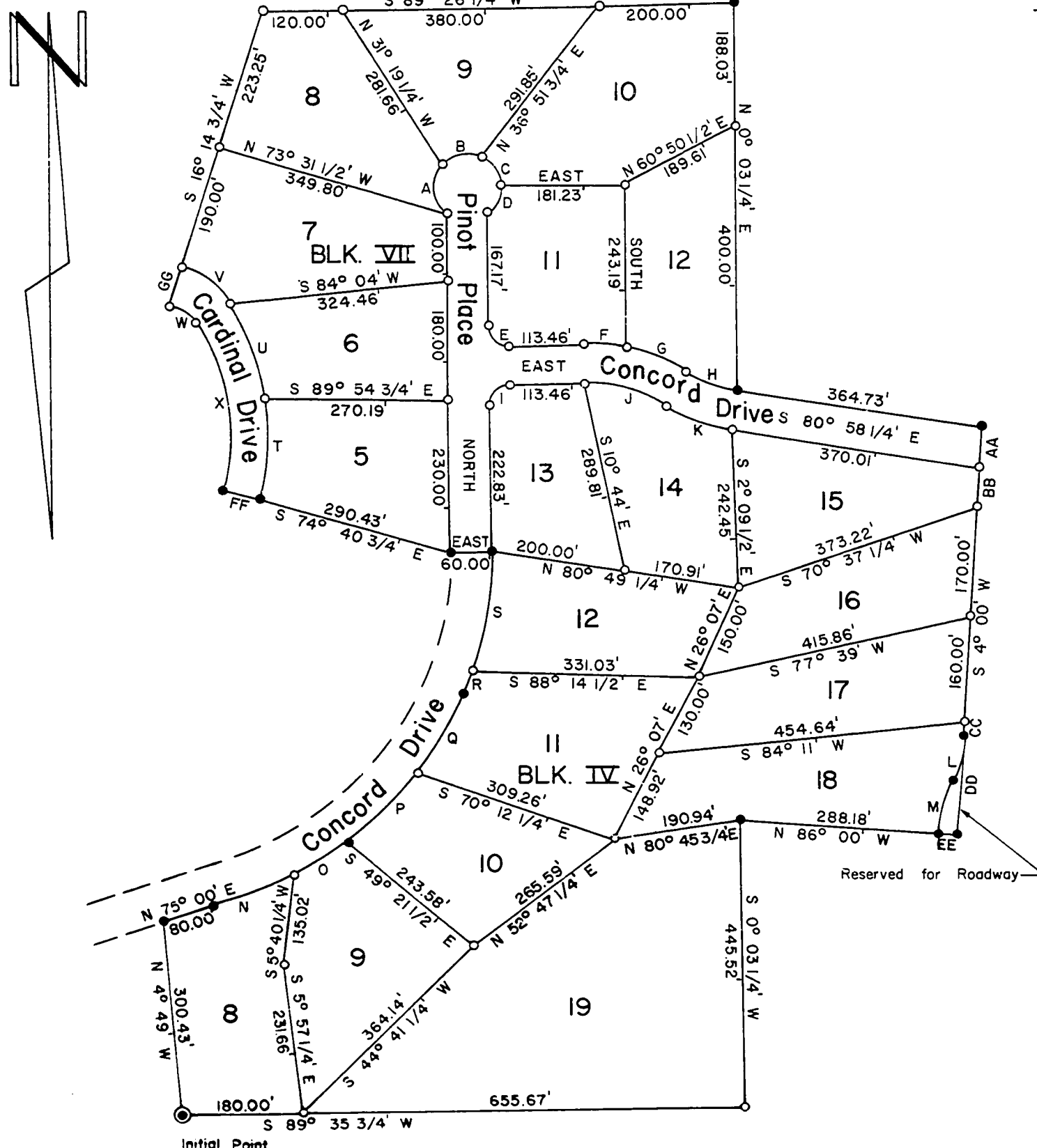
BENTON COUNTY, OREGON

SCALE: 1"=200', AUGUST, 1973

I, Harold D. Pritchett, P.E., certify that I have correctly surveyed and marked with proper monuments the lands represented on this plat and as an initial point for this survey I drove a galvanized iron pipe, 3 inches in diameter and 36 inches long, 6 inches below the surface of the ground, which initial point is N 89° 35 3/4' E, 160.00 feet from the S.W. corner, Lot 7, Block IV Vineyard Mountain Third Addition, said point being N 30° 23' 02" E, 2753.08 feet from the S.W. corner of Section 2; thence N 89° 35 3/4' E, 835.67 feet; thence N 0° 03 1/4' E, 445.52 feet; thence S 86° 00' E, 318.18 feet; thence N 4° 00' E, 622.50 feet; thence N 80° 58 1/4' W, 364.73 feet; thence N 0° 03 1/4' E, 588.03 feet; thence S 89° 26 1/4' W, 700.00 feet; thence S 16° 14 3/4' W, 473.25 feet; thence on a 50.00 foot radius curve right the long chord of which is S 52° 37 1/2' E, 39.65 feet; thence on a 321.00 foot radius curve right the long chord of which is S 8° 05 1/4' E, 255.07 feet; thence S 74° 40 3/4' E, 350.43 feet; thence East, 60.00 feet; thence on a 564.21 foot radius curve right the long chord of which is S 37° 30' W 686.95 feet, thence S 75° 00' W, 80.00 feet; thence S 4° 49' E, 300.43 feet, back to the point of beginning.

○=Rod set 5/8" dia.
●=Monument found

Note: A 10' slope and utility easement exists on both sides of all roadways.



CHORD	RADIUS	LENGTH	BEARING
A	50'	74.39'	N 5° 04' W
B	50'	59.48'	N 79° 30' E
C	50'	52.99'	S 32° 00' E
D	50'	44.72'	N 26° 34' E
E	30'	42.43'	N 45° 00' W
F	280'	58.08'	N 84° 02 3/4' W
G	280'	97.70'	N 68° 02 3/4' W
H	200'	79.65'	N 69° 29 1/4' W
I	30'	42.43'	N 45° 00' E
J	220'	121.28'	S 74° 00' E
K	260'	103.55'	S 69° 29 1/4' E
L	170'	65.84'	N 15° 10' E
M	230'	89.08'	N 15° 10' E
N	564.21'	125.95'	N 68° 35 1/2' E
O	564.21'	97.47'	N 57° 13 3/4' E
P	564.21'	149.96'	N 44° 38 1/4' E
Q	564.21'	140.20'	N 29° 51 3/4' E
R	564.21'	36.69'	N 20° 51 3/4' E
S	564.21'	186.25'	N 9° 30' E
T	381'	154.00'	S 3° 41 3/4' W
U	381'	155.21'	S 19° 47' E
V	115'	82.90'	S 52° 37 1/2' E
W	55'	39.65'	S 52° 37 1/2' E
X	321'	255.07'	S 8° 05 1/2' E

	LENGTH	BEARING
AA	60.23'	S 4° 00' W
BB	60.52'	S 4° 00' W
CC	19.76'	S 4° 00' W
DD	151.99'	S 4° 00' W
EE	30.00'	N 86° 00' W
FF	60.00'	S 74° 40 3/4' E
GG	60.00'	S 16° 14 3/4' W



Harold D. Pritchett appeared before me, in witness whereof, I have hereunto set my hand and seal this 13th day of September, 1973.
James M. Staus
Notary Public For Oregon My Commission Expires 5-11-75

KNOW ALL MEN BY THESE PRESENTS that we, Vineyard Mountain, Incorporated, an Oregon Corporation, proprietors and owners of the lands described and shown hereon, have caused this land to be platted as shown hereon, and dedicate the easements and the streets as shown to public use forever without reservation or restriction.

IN WITNESS WHEREOF, we do hereby set our hand this 14th day of September, 1973.

President

Secretary

Witness

Witness

On the _____ day of _____, 1973 before me did appear _____ who are personally known to me and duly sworn, did say that they are the owners of the lands described hereon and acknowledge that the dedication was their free act and deed.

Subscribed and sworn to me on this _____ day of _____, 1973.
James M. Staus
Notary Public For Oregon, My Commission Expires _____