

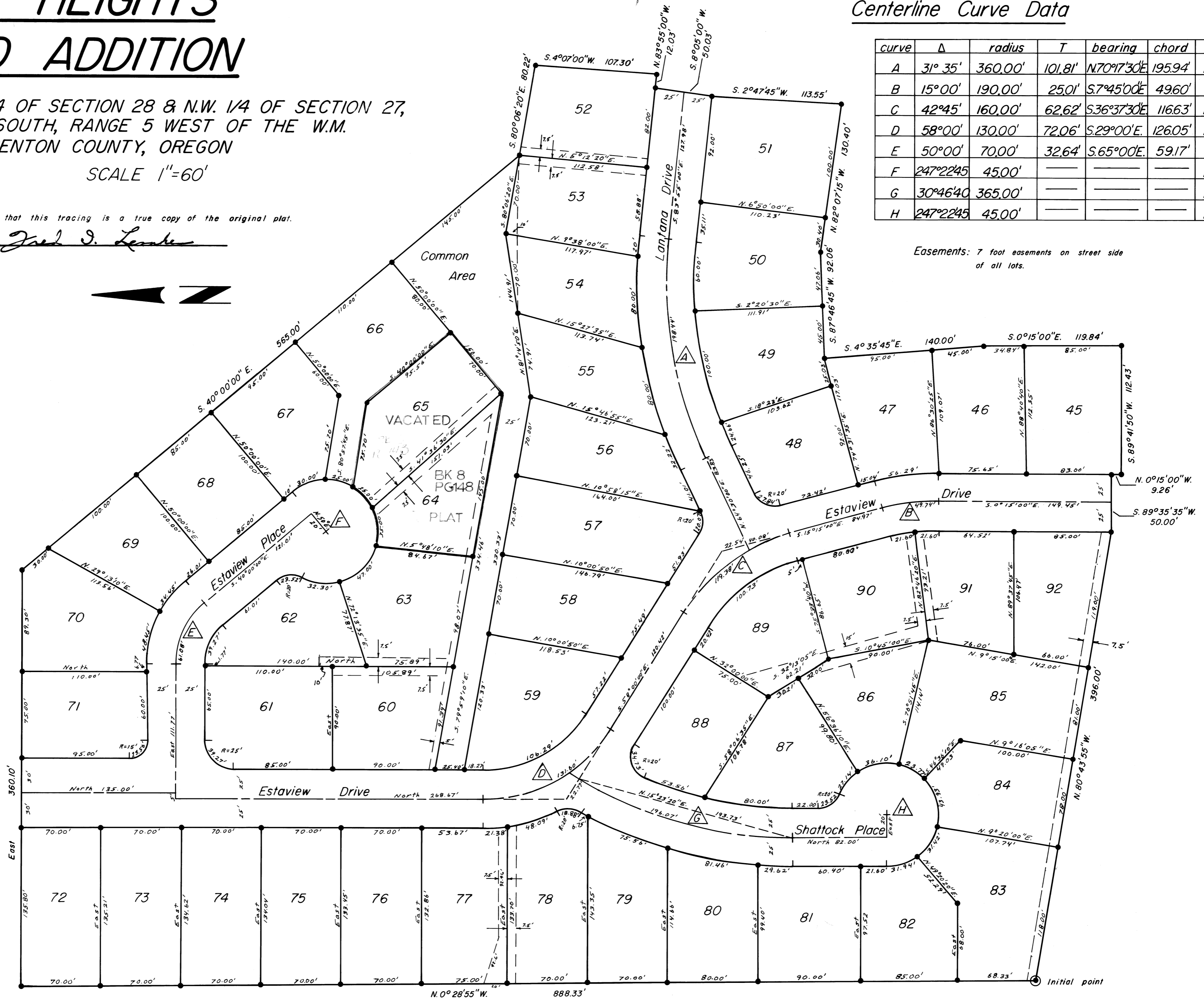
# FOREST HEIGHTS SECOND ADDITION

IN THE N.E. 1/4 OF SECTION 28 & N.W. 1/4 OF SECTION 27,  
TOWNSHIP 11 SOUTH, RANGE 5 WEST OF THE W.M.  
CORVALLIS, BENTON COUNTY, OREGON

JULY 1978 SCALE 1"=60'

I hereby certify that this tracing is a true copy of the original plat.

*Joel J. Leake*



Centerline Curve Data

curve	Δ	radius	T	bearing	chord	L
A	31° 35'	360.00'	101.81'	N.70°17'30"E	195.94'	198.44'
B	15° 00'	190.00'	25.01'	S.7°45'00"E	496.0'	49.74'
C	42° 45'	160.00'	62.62'	S.36°37'30"E	116.63'	119.38'
D	58° 00'	130.00'	72.06'	S.29°00'E	126.05'	131.60'
E	50° 00'	70.00'	32.64'	S.65°00'E	59.17'	61.08'
F	247°22'45"	45.00'				194.30'
G	30°46'40"	365.00'				196.07'
H	247°22'45"	45.00'				194.30'

Easements: 7 foot easements on street side of all lots.

N.0° 28' 55" W. 888.33'

Initial point