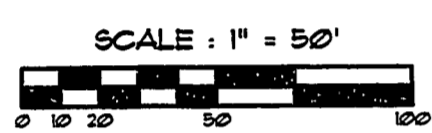


PRIME ACRES SUBDIVISION

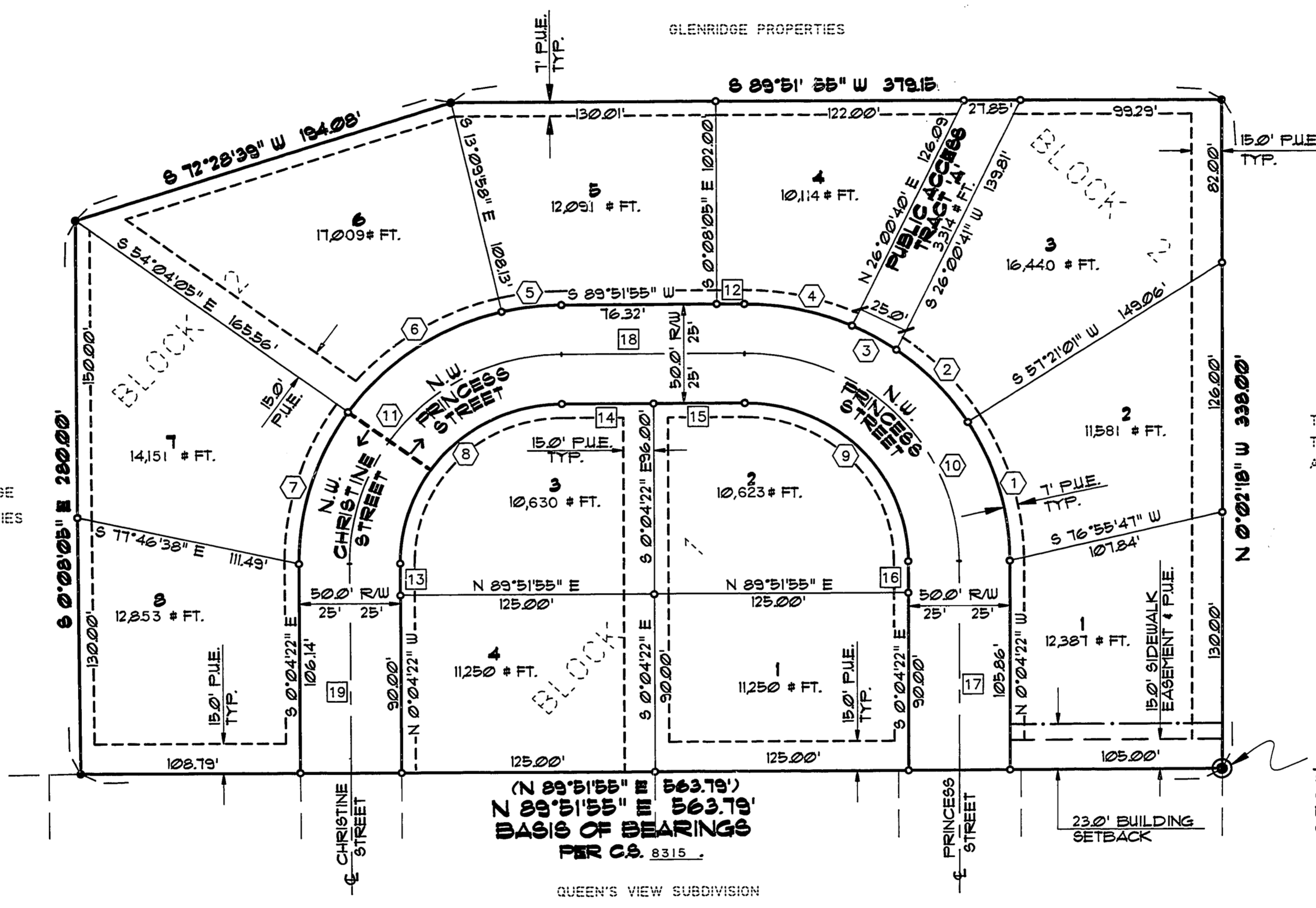
S.E. 1/4, SEC. 21, T.11S, R.5W, W.M.

BENTON COUNTY, OREGON

SHEET 1 OF 2



AUGUST 24, 1989



TIMBERHILL
 THIRD
 ADDITION

I HEREBY CERTIFY THAT THIS IS AN EXACT COPY OF THE ORIGINAL PLAT.
Darryl W. Harms
 DARRYL W. HARMS, P.L.S.

INITIAL POINT
 SET 2" I.D. PIPE, 6" BENEATH SURFACE
 OVER A FOUND 3/8" IRON ROD
 N.E. CORNER, LOT 13, BLOCK 1,
 QUEEN'S VIEW

NOTE
 THE OUT BOUNDARY OF THIS
 SUBDIVISION IS PER MY
 SURVEY C.S. 8315.

(N 89°51'55" E 563.79')
(N 89°51'55" E 563.79')
BASIS OF BEARINGS
PER C.S. 8315.

- LEGEND**
- FD. 3/8" IRON ROD WITH YELLOW PLASTIC CAP STAMPED "D.W. HARMS, P.L.S. 1079"
 - SET 3/8" X 30" IRON ROD WITH YELLOW PLASTIC CAP STAMPED "D.W. HARMS, P.L.S. 1079"
 - * FT. SQUARE FOOTAGE

CURVE DATA

No.	DELTA	RADIUS	ARC	CHORD
1	32°34'31"	130.00'	73.92'	N 16°21'41" W 72.92'
2	22°29'24"	130.00'	51.03'	N 43°53'39" W 50.70'
3	11°03'15"	130.00'	25.08'	N 60°40'03" W 25.04'
4	23°56'29"	130.00'	54.32'	N 78°09'51" W 53.93'
5	13°01'53"	130.00'	29.57'	S 83°20'59" W 29.50'
6	40°54'06"	130.00'	92.80'	S 56°22'59" W 90.85'
7	36°00'17"	130.00'	81.69'	S 17°55'47" W 80.36'
8	89°56'17"	80.00'	125.58'	N 44°53'47" E 113.08'
9	90°03'43"	80.00'	125.75'	S 45°06'14" E 113.20'
10	90°03'44"	105.00'	165.05'	N 45°06'14" W 148.51'
11	89°55'41"	105.00'	164.80'	S 44°53'47" W 148.40'

TANGENT DATA

No.	BEARING	DIST.
12	S 89°51'55" W	13.69'
13	N 0°04'22" W	16.09'
14	N 89°51'55" E	45.09'
15	N 89°51'55" E	44.91'
16	S 0°04'22" E	15.91'
17	N 0°04'22" W	105.89'
18	N 89°51'55" E	90.00'
19	S 0°04'22" E	105.82'

REGISTERED
**PROFESSIONAL
 LAND SURVEYOR**

Darryl W. Harms

OREGON
 JULY 30, 1976
DARRYL W. HARMS
 1079

DARRYL W. HARMS, P.L.S.
 P.O. BOX 1051
 CORYALLIS, OR 97339
 PHONE: (503) 758-5579

CORPORATION • IRVINE, CALIFORNIA
RECORDER BY NUMBER 075AR
POSITION EDGE OF PRINT ON THIS LINE

PLAN HOLD CORPORATION • IRVINE, CALIFORNIA
RECORDER BY NUMBER 075AR
POSITION EDGE OF PRINT ON THIS LINE

PLAN HOLD CORPORATION • IRVINE, CALIFORNIA
RECORDER BY NUMBER 075AR
POSITION EDGE OF PRINT ON THIS LINE

PLAN HOLD CORPORATION • IRVINE, CALIFORNIA
RECORDER BY NUMBER 075AR
POSITION EDGE OF PRINT ON THIS LINE

PRIME ACRES SUBDIVISION

S.E. 1/4, SEC. 21, T.11S, R.5W, W.M.

BENTON COUNTY, OREGON

SHEET 2 OF 2

APPROVALS:

EXAMINED AND APPROVED THIS 9th DAY OF October, 1989
BY Neil Mann
CORVALLIS CITY ENGINEER

EXAMINED AND APPROVED THIS 31st DAY OF October, 1989
BY Lamma L. Jehrenbacher
BENTON COUNTY SURVEYOR

EXAMINED AND APPROVED THIS 9th DAY OF October, 1989
BY [Signature]
CHAIRMAN, CORVALLIS PLANNING COMMISSION

EXAMINED AND APPROVED THIS 1 DAY OF Nov, 1989
BY BENTON COUNTY BOARD OF COMMISSIONERS
Dale D. Schrock CHAIRMAN
James S. Hill COMMISSIONER
John R. Dilworth COMMISSIONER

I HEREBY CERTIFY THAT PURSUANT TO O.R.S. 92.095 ALL AD VALOREM TAXES, FEES AND OTHER CHARGES REQUIRED BY LAW TO BE PLACED ON THE 1989-1990 TAX ROLL, WHICH BECAME A LIEN OR WILL BECOME A LIEN DURING THIS CALENDAR YEAR ON THIS SUBDIVISION, BUT NOT YET CERTIFIED TO THE TAX COLLECTOR FOR COLLECTION HAVE BEEN PAID TO ME THIS 25 DAY OF SEPTEMBER, 1989.

BY Robert H. Rondeau
DIRECTOR, BENTON COUNTY DEPARTMENT OF ASSESSMENT

I HEREBY CERTIFY THAT ALL AD VALOREM TAXES AND OTHER CHARGES REQUIRED BY LAW TO BE PLACED UPON THE TAX ROLL WHICH HAVE BECOME A LIEN ON THIS SUBDIVISION THAT ARE NOW DUE AND PAYABLE HAVE BEEN PAID TO June 30, 1989.

BY Clark Ruggles 10-9-89
DIRECTOR, BENTON COUNTY DEPARTMENT OF FINANCE,
AUDITING AND TAX COLLECTION

I HEREBY CERTIFY THAT ALL ASSESSMENTS AGAINST THIS PROPERTY HAVE BEEN PAID IN FULL AS OF THE 7 DAY OF October, 1989

BY Wend J. Hanson
CORVALLIS FINANCE DIRECTOR

STATE OF OREGON)
) S.S.
COUNTY OF BENTON)

I HEREBY CERTIFY THAT THE WITHIN PLAT WAS RECEIVED AND DULY RECORDED BY ME IN THE BENTON COUNTY RECORDS BOOK OF PLATS, VOLUME 8, PAGE 147 ON THIS 2nd DAY OF November, 1989, AT 3:30 O'CLOCK PM

BY Mervyn Nesbitt
BENTON COUNTY CLERK acting director

DEDICATION:

KNOW ALL MEN BY THESE PRESENTS THAT GLENRIDGE ESTATES, AN OREGON LIMITED PARTNERSHIP, BY GLENCOR, INC., AN OREGON CORPORATION, IS THE RECORD OWNER OF THE LANDS REPRESENTED ON THE ATTACHED MAP AND PARTICULARLY DESCRIBED IN THE SURVEYOR'S CERTIFICATE HEREUNTO ATTACHED AND HAVE CAUSED SAME TO BE SURVEYED AND PLATTED INTO LOTS AND STREETS AND TRACTS AS SHOWN ON THE ATTACHED PLAT AND TO BE DEDICATED "PRIME ACRES SUBDIVISION" AND DO HEREBY DEDICATE TO THE PUBLIC USE FOREVER WITHOUT RESERVATION OR RESTRICTION THE STREETS, EASEMENTS AND TRACT "A" AS SHOWN FOR SAID PURPOSES RESPECTIVELY.

Mary J. Schiroff MARY J. SCHIROFF, PRESIDENT
Keith Freeman KEITH FREEMAN, SECRETARY
GLENRIDGE ESTATES, AN OREGON LIMITED PARTNERSHIP,
BY GLENCOR, INC., AN OREGON CORPORATION

ACKNOWLEDGEMENT:

STATE OF OREGON)
) S.S.
COUNTY OF BENTON)

THIS IS TO CERTIFY THAT ON THIS 24th DAY OF August, 1989 BEFORE ME, A NOTARY PUBLIC FOR THE STATE OF OREGON IN THE COUNTY OF BENTON, DID PERSONALLY APPEAR BEFORE ME Mary J. Schiroff Keith Freeman, WHO IS KNOWN TO ME TO BE THE IDENTICAL PERSON DESCRIBED IN AND WHO EXECUTED THE ABOVE INSTRUMENT AND ACKNOWLEDGED TO ME THAT HE/SHE EXECUTED THE SAME FREELY AND VOLUNTARILY.

Marie J. Welton
NOTARY PUBLIC FOR THE STATE OF OREGON
MY COMMISSION EXPIRES: 1-20-91

SURVEYOR'S CERTIFICATE:

I, DARRYL W. HARMS, REGISTERED PROFESSIONAL LAND SURVEYOR IN THE STATE OF OREGON, BEING FIRST DULY SWORN, HEREBY DEPOSE AND SAY THAT DURING THE MONTH OF AUGUST 1989, I DID ACCURATELY SURVEY AND SUBDIVIDE INTO LOTS, TRACTS AND STREETS THE LANDS REPRESENTED ON THE ATTACHED MAP OF "PRIME ACRES SUBDIVISION", THE BOUNDARY OF WHICH IS DESCRIBED AS FOLLOWS:

LEGAL DESCRIPTION: ADJUSTED TAX LOT 804, MAP 11-5-23

BEGINNING AT A 2" X 36" GALVANIZED IRON PIPE SET OVER A 5/8" IRON ROD AND DRIVEN 6" BENEATH THE SURFACE AT THE NORTHEAST CORNER OF LOT 13, BLOCK 1, QUEEN'S VIEW, A SUBDIVISION OF RECORD IN BENTON COUNTY, OREGON, SAID NORTHEAST CORNER BEING ON THE WEST LINE OF AND NORTH 0°04'22" WEST 1265.92 FEET FROM THE SOUTHWEST CORNER OF THE JAMES L. MULKEY JR. DONATION LAND CLAIM NO. 65, TOWNSHIP 11 SOUTH, RANGE 5 WEST, WILLAMETTE MERIDIAN, BENTON COUNTY, OREGON; THENCE NORTH 0°02'18" WEST, ALONG SAID WEST CLAIM LINE, 338.00 FEET; THENCE SOUTH 89°51'55" WEST 379.15 FEET; THENCE SOUTH 72°28'39" WEST 134.08 FEET; THENCE SOUTH 0°08'05" EAST 280.00 FEET TO THE NORTH BOUNDARY OF SAID QUEEN'S VIEW SUBDIVISION; THENCE NORTH 89°51'55" EAST 563.75 FEET TO THE POINT OF BEGINNING, CONTAINING 4.25 ACRES.

I FURTHER DEPOSE AND SAY THAT THE ATTACHED MAP IS A TRUE AND CORRECT REPRESENTATION OF THE LOTS, STREETS AND TRACTS AS MARKED ON THE GROUND BY 3/8" X 30" IRON RODS AT ALL LOT CORNERS, POINTS OF CURVATURE AND BOUNDARY LINE CHANGES OF DIRECTION.

REGISTERED
PROFESSIONAL
LAND SURVEYOR

Darryl W. Harms

OREGON
JULY 30, 1976
DARRYL W. HARMS
1073

DARRYL W. HARMS, P.L.S.
P.O. BOX 1051
CORVALLIS, OR 97339
PHONE: (503) 758-5579

SUBSCRIBED AND SWORN TO BEFORE
ME THIS 24 DAY OF August, 1989

Walter Campbell
NOTARY PUBLIC FOR OREGON
MY COMMISSION EXPIRES: 9-22-89

I HEREBY CERTIFY THAT THIS IS AN
EXACT COPY OF THE ORIGINAL PLAT.
Darryl W. Harms
DARRYL W. HARMS, PLS