





**KILLEN SUBDIVISION**  
FOR MAXWELL INVESTMENT, LLC  
LOCATED IN  
SW 1/4 AND SE 1/4 SEC 23,  
T11S, R5W, WILLAMETTE MERIDIAN  
CITY OF CORVALLIS  
BENTON COUNTY, OREGON  
OCTOBER 12, 2000  
PAGE 1 OF 2

**MSS INC**  
531 SW 4TH  
CORVALLIS, OR 97333  
(541) 753-1320  
8/00/JD/bd75plat

THIS IS AN EXACT COPY  
OF THE ORIGINAL PLAT.

REGISTERED  
PROFESSIONAL  
LAND SURVEYOR

OREGON  
JULY 22, 1974  
**JOHN SEADERS**  
1014

EXPIRES 06/30/02

### LEGEND

- SET 5/8" x 30" I.R. W/ YPC STAMPED 'SEADERS LS 1014'
- ⊗ SET 5/8" x 30" I.R. W/ YPC STAMPED 'SEADERS LS 1014'-TO BE POST MONUMENTED
- × CORNER CALCULATED, NOT FOUND NOR SET
- A FD 5/8" I.R. W/ YPC AS PER 'PLAT OF ANJNI SUBDIVISION'
- B FD 3/4" I.R. AS PER 'PLAT OF ANJNI SUBDIVISION'
- ( ) R1 DATA OF, OR COMPUTED FROM 'PLAT OF ANJNI SUBDIVISION'
- ( ) R2 DATA OF, OR COMPUTED FROM C.S. 4828
- ( ) R3 DATA OF, OR COMPUTED FROM C.S. 3821

- I.R. IRON ROD
- YPC YELLOW PLASTIC CAP
- C.S. BENTON COUNTY SURVEY
- ROW RIGHT OF WAY
- FD FOUND
- PUE PUBLIC UTILITY EASEMENT
- PAE PUBLIC ACCESS EASEMENT

\* LEAD PLUG, PK NAIL AND  
WASHER STAMPED  
SEADERS LS 1014  
PER M 300182-01

### CURVE TABLE

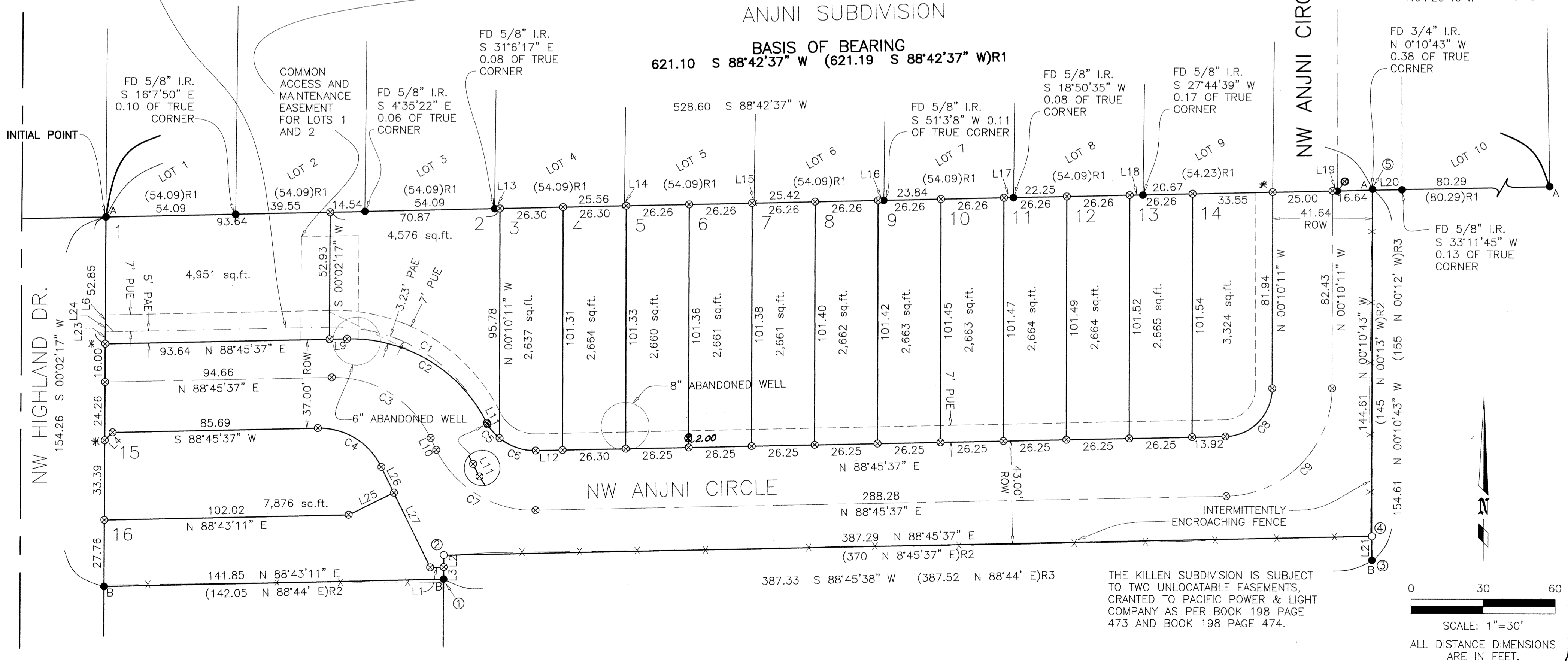
CURVE	RADIUS	DELTA	LENGTH	BEARING	CHORD
C1	70.00	62°57'12"	76.91	N59°45'46"W	73.10
C2	64.00	64°24'49"	71.95	N59°01'58"W	68.22
C3	45.00	65°13'45"	51.23	N58°37'30"W	48.51
C4	29.00	65°13'45"	33.02	N58°37'30"W	31.26
C5	23.00	19°12'31"	7.71	S41°08'35"E	7.67
C6	23.00	40°29'32"	16.25	S70°59'37"E	15.92
C7	45.00	65°13'45"	51.23	S58°37'30"E	48.51
C8	20.00	88°55'49"	31.04	N44°17'43"E	28.02
C9	45.00	88°55'28"	69.84	N44°17'43"E	63.04
C10	64.00	61°12'09"	68.36	N60°38'18"W	65.16
C11	64.00	4°09'32"	4.65	N89°09'36"W	4.64
C12	64.00	27°11'14"	30.37	N77°38'46"W	30.08

### LINE TABLE

L#	BEARING	LENGTH
L1	S88°45'37"W	5.65
L2	N00°02'17"E	5.00
L3	N00°02'17"E	5.00
L4	S44°26'42"W	4.66
L5	N00°02'17"E	8.55
L6	S00°02'17"W	3.45
L7	S45°36'51"E	4.97
L8	S88°45'56"W	0.99
L9	S88°45'37"W	7.36
L10	S26°00'38"E	5.51
L11	N26°49'34"W	0.59
L12	S88°45'37"W	11.26
L13	S88°42'37"W	2.23
L14	S88°42'37"W	0.74
L15	N88°42'37"E	0.84
L16	N88°42'37"E	2.42
L17	N88°42'37"E	4.00
L18	S88°42'37"W	5.58
L19	N88°42'37"E	2.00
L20	S88°42'37"W	12.36
L21	S00°10'43"E	10.00
L22	N88°45'37"E	12.00
L23	N00°02'17"E	5.00
L24	N00°02'17"E	3.55
L25	N63°59'22"E	21.05
L26	N26°00'38"W	12.00
L27	N26°00'38"W	34.74
L28	N64°20'49"W	40.75

### ANJNI SUBDIVISION

BASIS OF BEARING  
621.10 S 88°42'37" W (621.19 S 88°42'37" W)R1



THE KILLEN SUBDIVISION IS SUBJECT  
TO TWO UNLOCATABLE EASEMENTS,  
GRANTED TO PACIFIC POWER & LIGHT  
COMPANY AS PER BOOK 198 PAGE  
473 AND BOOK 198 PAGE 474.

