

CCR #17
11-8-2013

RECORD OF CONTROL NETWORK MONUMENTATION

CORNER: OSU CONTROL POINT No. 501 LOCATED AT THE INTERSECTION OF 35TH STREET AND CAMPUS WAY ON THE OREGON STATE UNIVERSITY CAMPUS. THE REMONUMENTATION OF THIS CONTROL POINT WAS REQUESTED BY OREGON STATE UNIVERSITY. THE ORIGINAL CONTROL POINT WAS REMOVED DURING THE RECONSTRUCTION OF THE INTERSECTION OF CAMPUS WAY.

REMONUMENTATION

DATE: OCTOBER 15, 2013 BY: BRIAN SAILOR, MATT WALKER FIRM: COLE SURVEYING, LLC. EVIDENCE RECOVERED: CONTROL POINT No. 501 WAS RESET IN ITS ORIGINAL POSITION BY USING THE ORIGINAL FIELD TIES THAT WERE PERFORMED DURING THE ESTABLISHMENT OF THE OREGON STATE UNIVERSITY CONTROL NETWORK. THE ELEVATION WAS OBTAINED BY RUNNING A THREE WIRE LEVEL LOOP FROM CONTROL POINT No 506. THE BASIS OF BEARINGS IS BETWEEN CONTROL POINT No. 502 LOCATED AT THE INTERSECTION OF 30TH STREET AND CAMPUS WAY AND CONTROL POINT No. 503 LOCATED AT THE INTERSECTION OF 26TH STREET AND CAMPUS WAY. BOTH CONTROL POINTS ARE PART OF THE CONTROL SURVEY PERFORMED BY COLE SURVEYING IN 2001 FOR OREGON STATE UNIVERSITY.

CORNER SET: SET 3-1/4" ALUMINUM CAP ON 5/8" IRON ROD MARKED AS SHOWN BELOW. NEW ELEVATION = 248.66

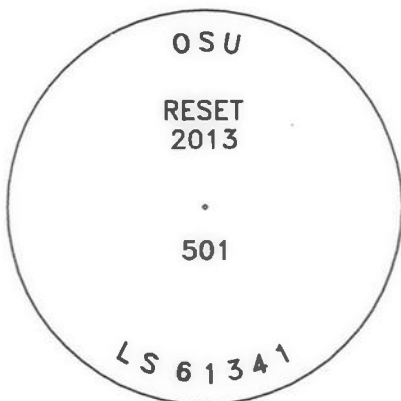
() RECORD INFORMATION FROM ORIGINAL FIELD NOTES OF CONTROL SURVEY

PREPARED BY
COLE SURVEYING, LLC
245 NE CONIFER BLVD.
P.O. BOX 1211
CORVALLIS, OREGON 97339
(541) 929-5500

REGISTERED
PROFESSIONAL
LAND SURVEYOR

OREGON
JANUARY 11, 2005
BRIAN SCOTT SAILOR
61341

EXPIRES 6/30/14



SET 5/8" x 30"
IRON ROD WITH
3-1/4" ALUMINUM
CAP, CAP MARKED
AS SHOWN ABOVE

CAMPUS WAY

35th STREET

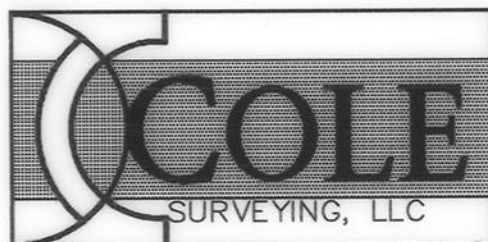
N87°54'53"W 1464.12'
(1464.12')

BASIS OF BEARINGS
BENTON COUNTY CCR #17
S88°24'22"E 1184.32'
(S88°24'22"E 1184.32')

OSU CONTROL
POINT No. 502

OSU CONTROL
POINT No. 503

180°29'29"
(180°29'29")



CCR 17
8-8-12

RECORD OF CONTROL NETWORK MONUMENTATION

CORNER: OSU CONTROL POINT No. 502 LOCATED AT THE INTERSECTION OF 30TH STREET AND CAMPUS WAY ON THE OREGON STATE UNIVERSITY CAMPUS. THE REMONUMENTATION OF THIS CONTROL POINT WAS REQUESTED BY OREGON STATE UNIVERSITY. THE ORIGINAL CONTROL POINT WAS REMOVED DURING THE RECONSTRUCTION OF THE INTERSECTION OF 30TH STREET AND CAMPUS WAY.

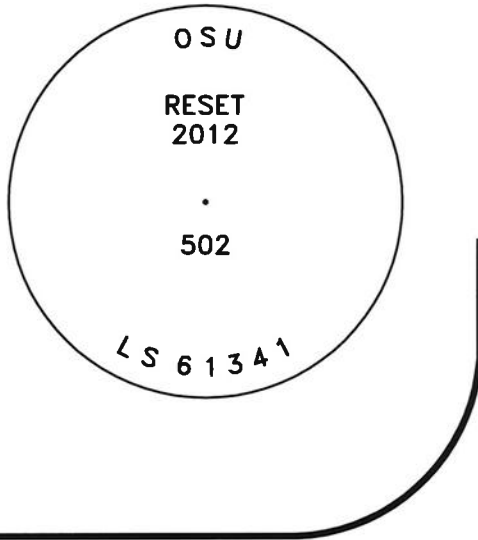
REMONUMENTATION

DATE: JULY 19, 2012 BY: BRIAN SAILOR, MATT WALKER FIRM: COLE SURVEYING, LLC. EVIDENCE RECOVERED: CONTROL POINT No. 502 WAS RESET IN ITS ORIGINAL POSITION BY USING THE ORIGINAL FIELD TIES THAT WERE PERFORMED DURING THE ESTABLISHMENT OF THE OREGON STATE UNIVERSITY CONTROL NETWORK. THE ELEVATION WAS OBTAINED BY RUNNING A THREE WIRE LEVEL LOOP FROM CONTROL POINT No 503. THE BASIS OF BEARINGS IS BETWEEN CONTROL POINT No. 503 LOCATED AT THE INTERSECTION OF 26TH STREET AND CAMPUS WAY AND CONTROL POINT No. 508 LOCATED AT THE INTERSECTION OF 26TH STREET AND JEFFERSON WAY. BOTH CONTROL POINTS ARE PART OF THE CONTROL SURVEY PERFORMED BY COLE SURVEYING IN 2001 FOR OREGON STATE UNIVERSITY.

CORNER SET: SET 3-1/4" ALUMINUM CAP ON 5/8" IRON ROD MARKED AS SHOWN BELOW. NEW ELEVATION = 246.95

() RECORD INFORMATION FROM ORIGINAL FIELD NOTES OF CONTROL SURVEY

PREPARED BY
COLE SURVEYING, LLC
245 NE CONIFER BLVD.
P.O. BOX 1211
CORVALLIS, OREGON 97339
(541) 929-5500



NOT-TO-SCALE

30th STREET

CAMPUS WAY

30th STREET

SET 5/8" x 30"
IRON ROD WITH
3-1/4" ALUMINUM
CAP, CAP MARKED
AS SHOWN ABOVE

N88°24'22"W 1184.32'
(1184.32')

OSU CONTROL
POINT No. 503

(91°02'49")

BASIS OF BEARINGS
BENTON COUNTY CCR #17
N00°32'49"E 823.46'
(823.46')

OSU CONTROL
POINT No. 508

REGISTERED
PROFESSIONAL
LAND SURVEYOR

OREGON
JANUARY 11, 2005
BRIAN SCOTT SAILOR
61341

EXPIRES 6/30/14



CCR 17
10-25-2010

RECORD OF CONTROL NETWORK MONUMENTATION

CORNER: OSU CONTROL POINT No. 508 LOCATED AT THE INTERSECTION OF 26TH STREET AND JEFFERSON WAY ON THE OREGON STATE UNIVERSITY CAMPUS. THE REMONUMENTATION OF THIS CONTROL POINT WAS REQUESTED BY OREGON STATE UNIVERSITY. THE ORIGINAL CONTROL POINT WAS REMOVED DURING THE RECONSTRUCTION OF THE INTERSECTION OF 26TH STREET AND JEFFERSON WAY.

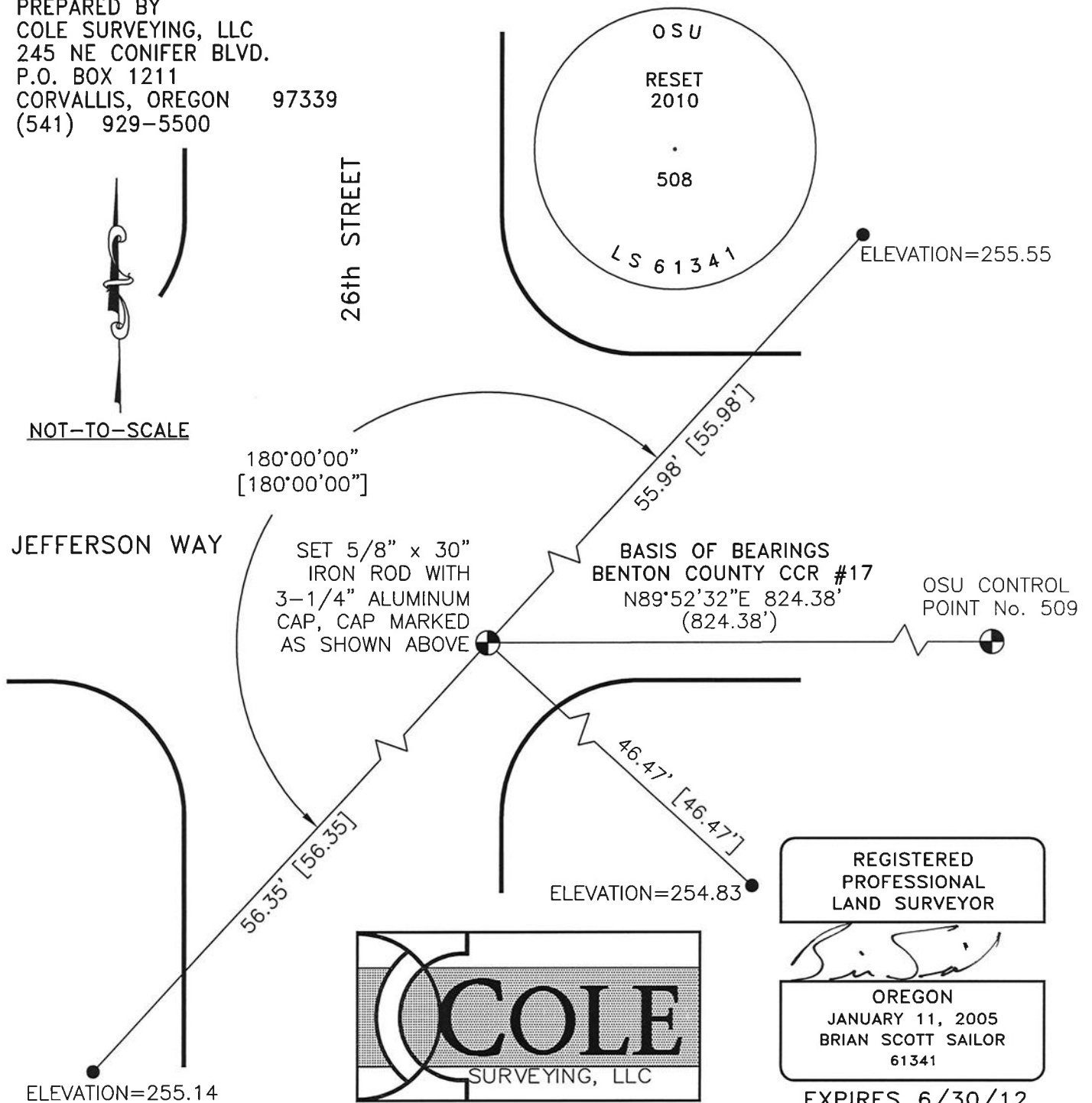
REMONUMENTATION

DATE: SEPTEMBER 29, 2010 BY: BRIAN SAILOR, JED MITCHELL FIRM: COLE SURVEYING, LLC. EVIDENCE RECOVERED: CONTROL POINT No. 508 WAS RESET IN ITS ORIGINAL POSITION BY SETTING REFERENCE MONUMENTS PRIOR TO CONSTRUCTION AS SHOWN. THE ELEVATION WAS OBTAINED BY RUNNING A THREE WIRE LEVEL LOOP FROM THE REFERENCE MONUMENTS. THE BASIS OF BEARINGS IS BETWEEN CONTROL POINT No. 508 AND CONTROL POINT No. 509 LOCATED AT THE NORTHEAST CORNER OF JEFFERSON WAY AND WALDO PLACE. BOTH CONTROL POINTS ARE PART OF THE CONTROL SURVEY PERFORMED BY COLE SURVEYING IN 2001 FOR OREGON STATE UNIVERSITY.

CORNER SET: SET 3-1/4" ALLUMINUM CAP ON 5/8" IRON ROD MARKED AS SHOWN BELOW. NEW ELEVATION = 255.33

- () RECORD INFORMATION FROM ORIGINAL FIELD NOTES OF CONTROL SURVEY
- [] ORIGINAL DISTANCE FROM ESTABLISHMENT OF REFERENCE MONUMENTS (6/22/10)
- SET 5/8" x 30" IRON ROD WITH RED PLASTIC CAP MARKED "COLE SURV REF MON"

PREPARED BY
COLE SURVEYING, LLC
245 NE CONIFER BLVD.
P.O. BOX 1211
CORVALLIS, OREGON 97339
(541) 929-5500



CCR #17
3-18-05

RECORD OF CONTROL NETWORK MONUMENTATION

CORNER: OSU CONTROL POINT No. 511 LOCATED AT THE NORTHEAST CORNER OF THE INTERSECTION OF 26th STREET AND WASHINGTON WAY.
THE REMONUMENTATION OF THIS CONTROL POINT WAS REQUESTED BY OREGON STATE UNIVERSITY THIS CONTROL POINT WAS REMOVED DURING THE CONSTRUCTION OF NEW SIDEWALKS AND A.D.A. RAMPS

REMONUMENTATION

DATE: JANUARY 3, 2005 BY: MATT WALKER, BRIAN SAILOR FIRM: COLE SURVEYING
EVIDENCE RECOVERED: _____

CONTROL POINT No. 511 WAS RESET IN ITS ORIGINAL POSITION USING FIELD MEASUREMENTS OBTAINED FROM THE ORIGINAL CONTROL SURVEY COLE SURVEYING PERFORMED IN 2001 FOR OREGON STATE UNIVERSITY. A 3-WIRE LEVEL LOOP WAS RUN FROM ADJACENT OSU CONTROL POINTS TO DETERMINE A NEW ELEVATION.

CORNER SET: RÉSET 3" BRASS CAP ON 3/4" IRON PIPE, MARKED AS SHOWN BELOW, RECESSED IN CONCRETE WALK
NEW ELEVATION = 237.34 FEET = 72.343 METERS

() RECORD INFORMATION FROM ORIGINAL FIELD NOTES

REGISTERED
PROFESSIONAL
LAND SURVEYOR

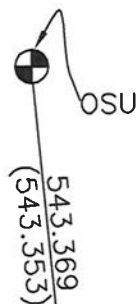
C. Henry Cole

OREGON
JULY 13, 1984
C. HENRY COLE
2088

EXPIRES 12/31/05

26th STREET

SET 3/4" x 30"
IRON PIPE WITH
3" BRASS CAP
IN SIDEWALK;
CAP MARKED AS
SHOWN BELOW



NOT-TO-SCALE

1339.552 (1339.557)
N 89°25'04" E
BASIS OF BEARINGS BENTON COUNTY CCR #17

OSU CONTROL POINT 511
ELEVATION = 237.34 FEET
72.343 METERS

WASHINGTON WAY

OSU CONTROL POINT 510

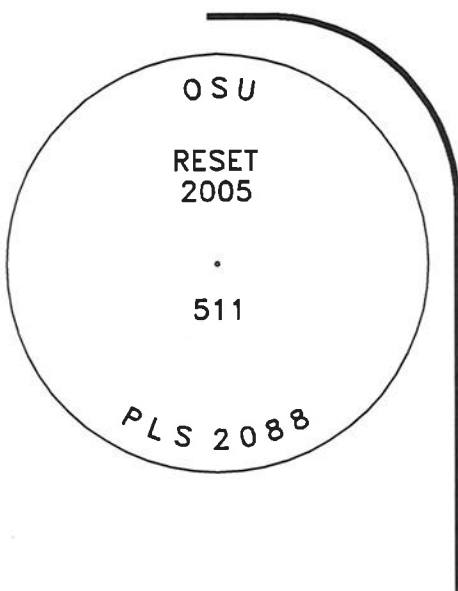
1272.310
(1272.292)



**COLE
SURVEYING, INC.**

C. HENRY COLE, P.L.S.
COLE SURVEYING, INC.
6765 S.W. PHILOMATH BLVD.
CORVALLIS, OREGON 97333
(541) 929-5500

FD PK NAIL W/SHINER COLE
SURVEYING TRAVERSE POINT USED
IN ORIGINAL CONTROL TRAVERSE



CLR 17
2-11-13

RECORD OF CONTROL NETWORK MONUMENTATION

CORNER: OSU CONTROL POINT No. 512 LOCATED AT THE INTERSECTION OF 26TH STREET AND WESTERN BOULEVARD WAY ON THE OREGON STATE UNIVERSITY CAMPUS. THE REMONUMENTATION OF THIS CONTROL POINT WAS REQUESTED BY OREGON STATE UNIVERSITY. THE ORIGINAL CONTROL POINT WAS REMOVED DURING THE RECONSTRUCTION OF THE INTERSECTION OF 26TH STREET AND WESTERN BOULEVARD.

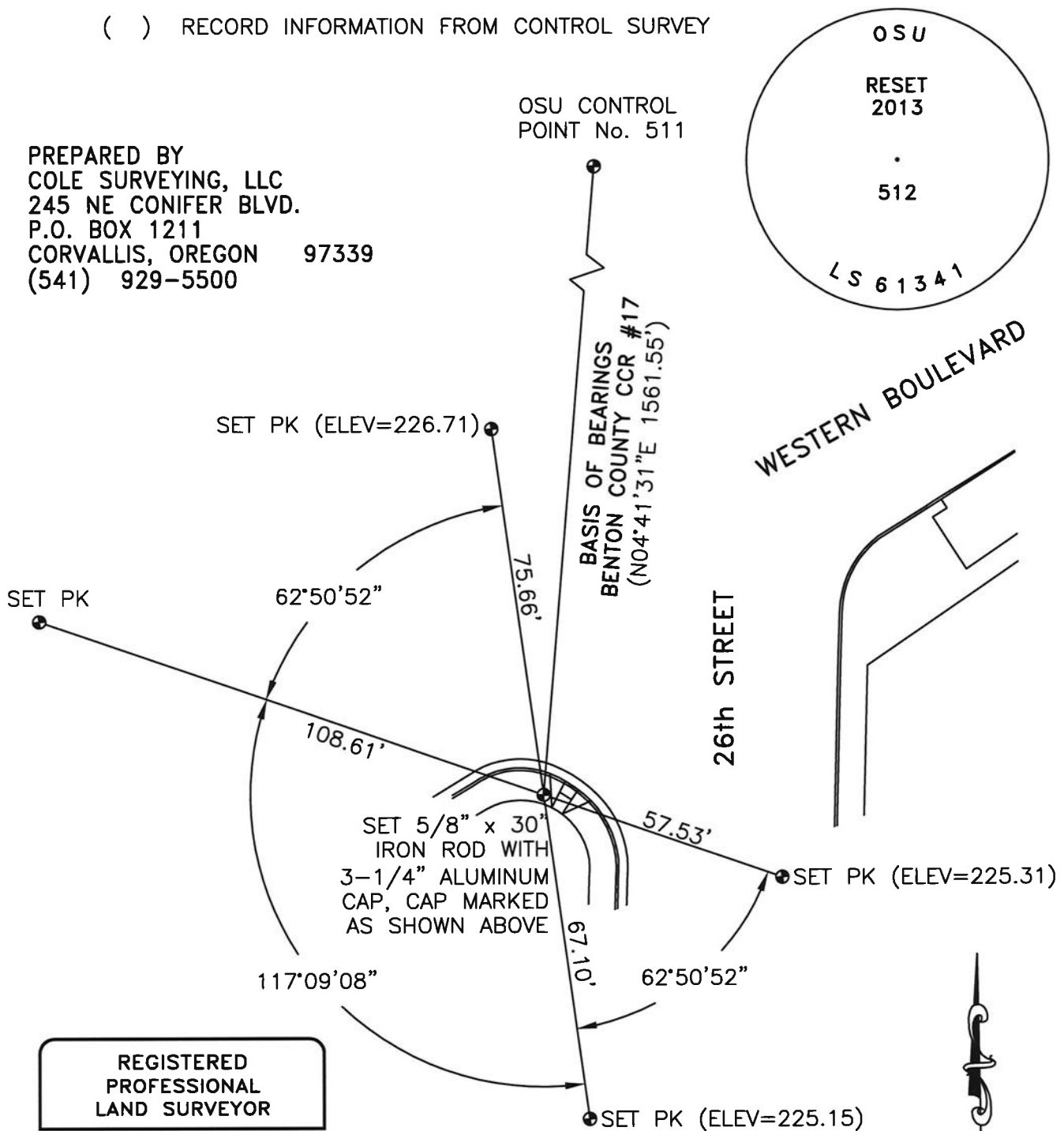
REMONUMENTATION

DATE: FEBRUARY 6, 2013 BY: BRIAN SAILOR, CHRIS SAILOR FIRM: COLE SURVEYING, LLC. EVIDENCE RECOVERED: CONTROL POINT No. 512 WAS RESET IN ITS ORIGINAL POSITION BY SETTING REFERENCE POINTS AS SHOWN BELOW. THE ELEVATION WAS OBTAINED BY RUNNING A THREE WIRE LEVEL LOOP FROM SAID REFERENCE POINTS. THE BASIS OF BEARINGS IS BETWEEN CONTROL POINT No. 511 LOCATED AT THE INTERSECTION OF 26TH STREET AND WASHINGTON WAY AND CONTROL POINT No. 512. BOTH CONTROL POINTS ARE PART OF THE CONTROL SURVEY PERFORMED BY COLE SURVEYING IN 2001 FOR OREGON STATE UNIVERSITY.

CORNER SET: SET 3-1/4" ALUMINUM CAP ON 5/8" IRON ROD MARKED AS SHOWN BELOW. NEW ELEVATION = 226.08.

() RECORD INFORMATION FROM CONTROL SURVEY

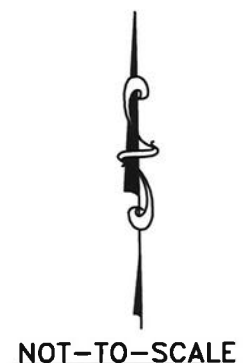
PREPARED BY
COLE SURVEYING, LLC
245 NE CONIFER BLVD.
P.O. BOX 1211
CORVALLIS, OREGON 97339
(541) 929-5500



REGISTERED
PROFESSIONAL
LAND SURVEYOR

Brian Scott Sailor
OREGON
JANUARY 11, 2005
BRIAN SCOTT SAILOR
61341

EXPIRES 6/30/14



CCR #17
3-19-07

RECORD OF CONTROL NETWORK MONUMENTATION

OSU CONTROL POINT "VETMED" IS LOCATED IN THE SIDEWALK ON THE WEST SIDE OF 30TH STREET, APPROXIMATELY 300 FEET NORTH OF THE NORTH TOP OF BANK OF OAK CREEK.

THE REMONUMENTATION OF THIS CONTROL POINT WAS REQUESTED BY OREGON STATE UNIVERSITY AS A RESULT OF THE 30TH STREET RECONSTRUCTION PROJECT THAT TOOK PLACE IN THE SUMMER OF 2006. THE CAP WAS ORIGINALLY SET IN A 24" DIAMETER CONCRETE CYLINDER AS PART OF THE OREGON STATE UNIVERSITY CONTROL NETWORK.

REMONUMENTATION PROCEDURE

DATE: AUGUST 31, 2006 BY: DAVID MALONE, BRIAN SAILOR FIRM: COLE SURVEYING
PROCEDURE:

PRIOR TO DEMOLITION OF THE CAP AND THE CONCRETE CYLINDER, WE SET UP THE INSTRUMENT ON THE CAP AND TIED TWO PK NAILS THAT HAD BEEN SET AT AN APPROXIMATELY 90° ANGLE. FOLLOWING EACH TIE, THE GUN WAS THEN "FLOPPED" TO THE REVERSE POSITION AND A SCRIBE WAS MADE ON THE CURB OF THE NEWLY CONSTRUCTED PARKING LOT TO THE WEST. THE CAP WAS THEN PUT BACK IN ITS ORIGINAL POSITION BY SETTING UP ON EACH PK NAIL AND INTERSECTING THE LINES CREATED BY SIGHTING THEIR RESPECTIVE SCRIBE MARKS. A 3-WIRE LEVEL LOOP WAS RUN FROM OSU CONTROL POINT 510, LOCATED AT THE INTERSECTION OF 30TH STREET AND JEFFERSON WAY, TO DETERMINE THE NEW ELEVATION.

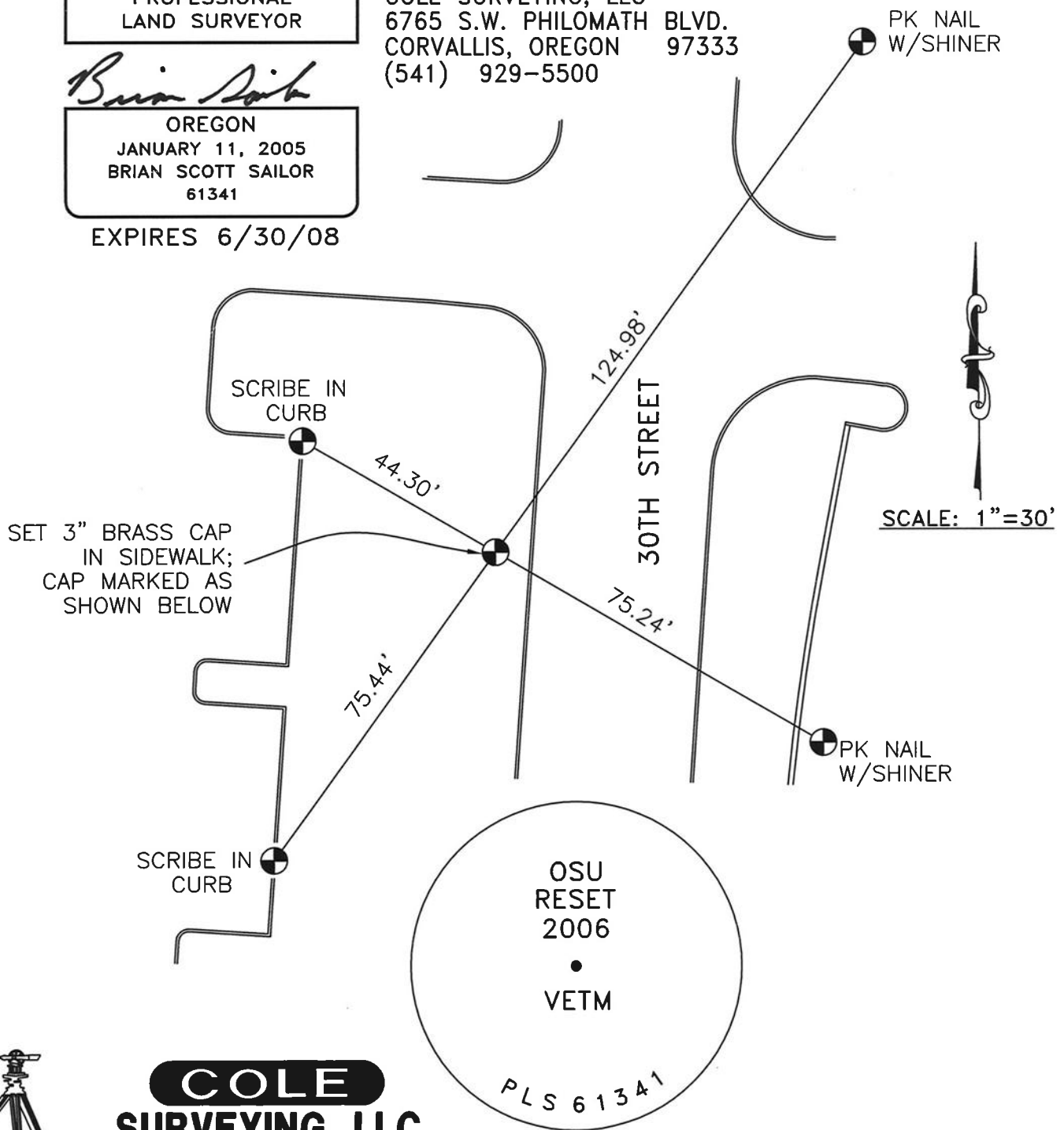
CORNER SET: RESET 3" BRASS CAP ON 3/4" IRON PIPE, MARKED AS SHOWN BELOW, RECESSED IN CONCRETE WALK
NEW ELEVATION = 233.87 FEET = 71.284 METERS (NAVD 88)

REGISTERED
PROFESSIONAL
LAND SURVEYOR

Brian Sailor
OREGON
JANUARY 11, 2005
BRIAN SCOTT SAILOR
61341

EXPIRES 6/30/08

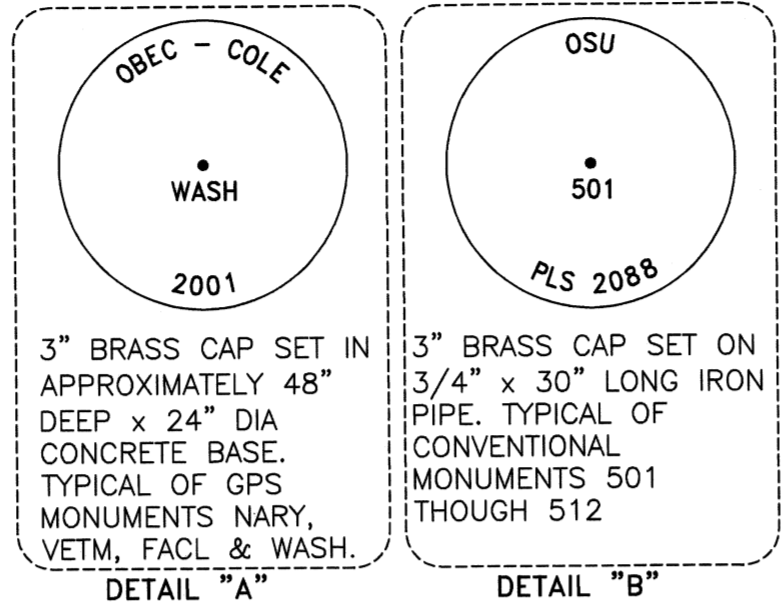
BRIAN SAILOR, P.L.S.
COLE SURVEYING, LLC
6765 S.W. PHILOMATH BLVD.
CORVALLIS, OREGON 97333
(541) 929-5500



COLE
SURVEYING, LLC

RECORD OF SURVEY

FOR: OREGON STATE UNIVERSITY
 DATE: MAY 1, 2001
 LOCATION: OREGON STATE UNIVERSITY
 MAIN CAMPUS
 NE & NW 1/4 SEC. 3,
 T 11 S, AND SW 1/4
 SEC. 35, SE & SW 1/4
 SEC. 34 T 12 S, R 5 W
 WILLAMETTE MERIDIAN
 CITY OF CORVALLIS
 BENTON COUNTY, OREGON



LEGEND

- ⊙ FD 3 1/4" BRASS CAP STAMPED AS INDICATED
- ⊙ SET 3" BRASS CAP STAMPED AS SHOWN IN DETAILS "A" & "B"
- FD FOUND

NARRATIVE

PURPOSE:

THE PURPOSE OF THIS SURVEY IS TO SET UP A CONTROL NETWORK ON THE MAIN OREGON STATE UNIVERSITY CAMPUS. TO CONVERT GROUND DISTANCES TO GRID, MULTIPLY THE GROUND VALUES BY 0.99993903 (AVERAGE OF THE "COMBINED FACTOR" FOR NARY, VETM, FACL & WASH). TO CONVERT ANY GEODETIC BEARING TO GRID BEARING APPLY THE AVERAGE MAPPING ANGLE (+1°58'19").

BASIS OF BEARINGS

THE BASIS OF BEARINGS FOR THIS SURVEY IS FROM THE STATE PLANE COORDINATES PROVIDED BY OBEC CONSULTING ENGINEERS FROM NARY TO WASH.

BOUNDARY DETERMINATION

THERE ARE NO BOUNDARIES DETERMINED BY THIS SURVEY.

**STATE PLANE COORDINATES
 CONVENTIONAL TRAVERSE DATA****

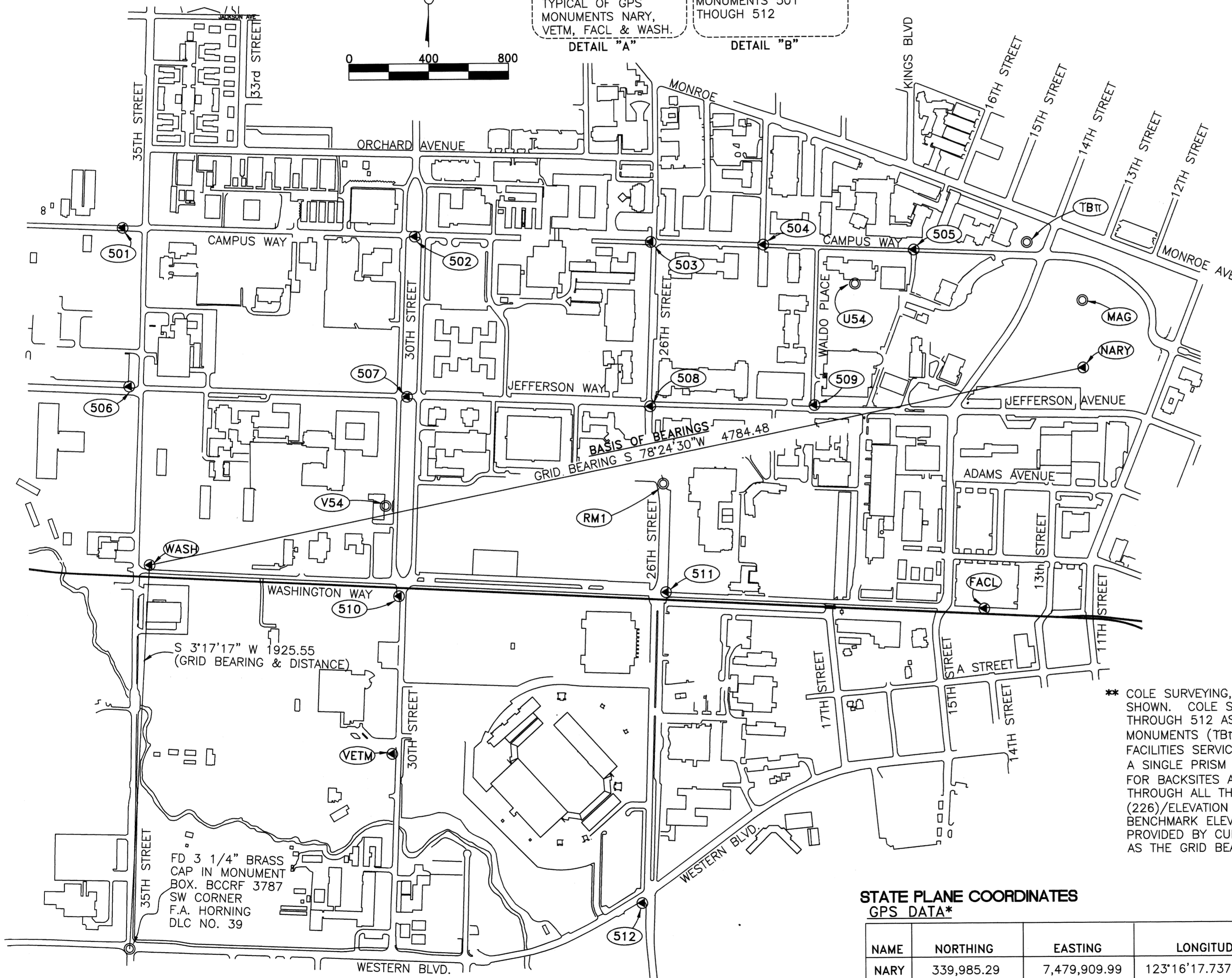
NO./NAME	NORTHING	EASTING	DIFFERENTIAL LEVELING ELEVATION METERS / FEET	
NARY	SEE BELOW "STATE PLANE COORDINATES" GPS DATA TABLE		69.962	229.53
VETM			71.386	234.21
FACL			70.453	231.15
WASH			73.218	240.22
501	340,713.70	7,475,097.96	75.840	248.82
502	340,660.46	7,476,561.02	75.274	246.96
503	340,627.55	7,477,744.82	79.019	259.25
504	340,611.03	7,478,309.14	78.361	257.09
505	340,581.36	7,479,062.85	74.820	245.47
506	339,918.63	7,475,126.16	74.610	244.78
507	339,857.88	7,476,518.10	73.307	240.51
508	339,804.13	7,477,736.96	77.766	255.14
509	339,805.92	7,478,561.34	77.534	254.38
510	338,860.02	7,476,471.83	73.107	239.85
511	338,873.63	7,477,811.23	72.338	237.33
512	337,317.31	7,477,683.50	68.936	226.17
V54	339,312.05	7,476,406.95	73.599	241.47
RM1 (COLLEGE)	339,416.87	7,477,800.21	73.757	241.98
U54	340,413.65	7,478,767.12	77.802	255.26
MAG (226)	340,323.31	7,479,907.74	70.096	229.97
TBT	340,615.56	7,479,630.56	72.350	237.37

** COLE SURVEYING, INC. SET MONUMENTS NUMBERED 501 THROUGH 512 AT THE VARIOUS LOCATIONS SHOWN. COLE SURVEYING RAN A CONVENTIONAL CLOSED TRAVERSE THROUGH MONUMENTS 501 THROUGH 512 AS WELL AS NARY, WASH, FACL & VETM AND THOSE ADDITIONAL EXISTING MONUMENTS (TBT, U54, CORVALLIS MAG STA=226, V54 & COLLEGE RM1) IDENTIFIED BY OSU FACILITIES SERVICES. A NIKON DTM-530 (2 SECOND INSTRUMENT) TOTAL STATION WAS USED WITH A SINGLE PRISM MOUNTED ON A WOODEN TRIPODS W/OPTICAL PLUMMET TRIBRACHS AND ADAPTERS FOR BACKSITES AND FORESITES. A CLOSED THREE WIRE LEVEL LOOP (NAVD 88) WAS RUN THROUGH ALL THE MONUMENTS AROUND CAMPUS WITH A LOOP CLOSURE OF 2 MILLIMETERS. MAG (226)/ELEVATION 70.096 METERS AND U54 / ELEVATION 77.802 METERS WERE HELD FOR BENCHMARK ELEVATIONS AS PER THE LATEST NGS LEVELS PERFORMED IN CORVALLIS AND PROVIDED BY CURT SMITH. THE GRID COORDINATES FROM OBEC WERE HELD FOR NARY, AS WELL AS THE GRID BEARING FROM NARY TO WASH.

**STATE PLANE COORDINATES
 GPS DATA***

NAME	NORTHING	EASTING	LONGITUDE	LATITUDE	H HEIGHT	N SEPARATION	SCALE FACTOR	COMBINED FACTOR
NARY	339,985.29	7,479,909.99	123°16'17.73731"W	44°33'54.85396"N	155.25	-74.6	0.999949668	0.999938675
VETM	338,069.99	7,476,433.37	123°17'04.82054"W	44°33'34.77132"N	160.00	-74.2	0.99995069	0.999939487
FACL	338,782.19	7,479,406.57	123°16'24.11672"W	44°33'42.80981"N	156.83	-74.6	0.99995028	0.99993921
WASH	339,023.92	7,475,223.09	123°17'21.98163"W	44°33'43.77352"N	166.04	-74.5	0.999950231	0.999938727

* THE ABOVE NEW MONUMENTS (NARY, WASH, FACL & VETM) WERE SET BY COLE SURVEYING AND A GPS SURVEY PERFORMED BY OBEC CONSULTING ENGINEERS ON 4/30/2001 AND 5/1/2001. THESE NEW MONUMENTS ARE CLASSED AS PRIMARY CONTROL STATUS. THE HORIZONTAL DATUM IS NAD 83(98) AND THE COORDINATE SYSTEM IS OREGON STATE PLANE-NORTH ZONE. FOR ADDITIONAL INFORMATION SEE THE "NARRATIVE" PROVIDED BY OBEC CONSULTING ENGINEERS AND ATTACHED AS PART OF THIS SURVEY.



REGISTERED
 PROFESSIONAL
 LAND SURVEYOR

C. Henry Cole

OREGON
 JULY 13, 1984
 C. HENRY COLE
 2088

EXPIRES 12/31/01

C. HENRY COLE
 COLE SURVEYING, INC.
 6765 S.W. PHILOMATH BLVD.
 CORVALLIS, OREGON 97333
 (541) 929-5500



**COLE
 SURVEYING, INC.**

Benton County
 Surveyor's Office

CCR FILE NO. 17
 FILING DATE 7-30-01
 FILE SIZE 18x24

0170CS01B