

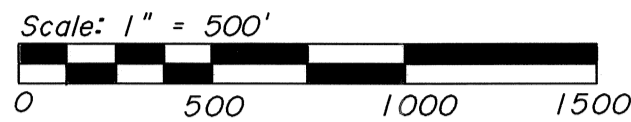
RECORD OF SURVEY

STARKER FORESTS, INC.
for **STARKER PROPERTIES, LLC**
DOUGLAS D. THURBER

in SECTION 36, T11S, R7W, W.M.
BENTON COUNTY, OREGON
MARCH 6, 2001

Benton County
Surveyor's Office

C.S. FILE NO. 10368
FILING DATE 4-23-09
FILE SIZE 18x24



PROPERTY LINE ADJUSTMENT APPROVAL

Greg Vermet
BENTON COUNTY PLANNING OFFICIAL
4/23/2009
DATE

NARRATIVE

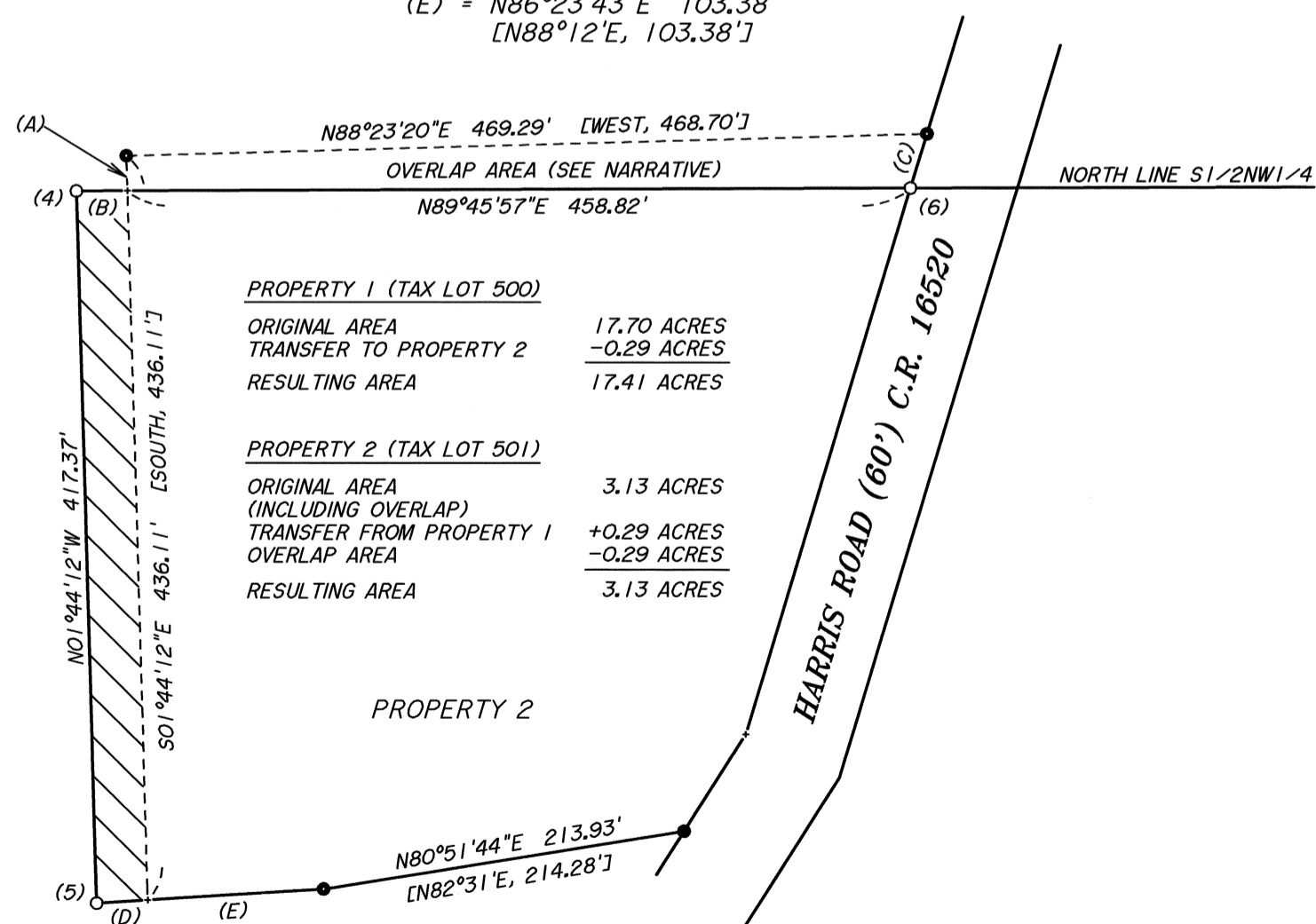
The purpose of this survey is to monument and mark portions of the East-West centerline of the NW1/4 and the NE1/4 of Section 36. We also performed a boundary line clarification and adjustment involving Tax Lots 500 (Starker Properties, LLC) and 501 (Thurber) of Tax map 11-7-36 as per Benton County Development Department File No. LD-01-10.

C.S. 7013 subdivided Section 36 in 1979 using an erroneous corner point for the 1/4 corner between Sections 35 and 36. The true corner point was recovered by C.S. 9428 and held as control for our subdivision of Section 36. Monuments set along the East-West centerline of the NE1/4 of Section 36 by C.S. 7013 and C.S. 7380 were therefore found to be off line as noted.

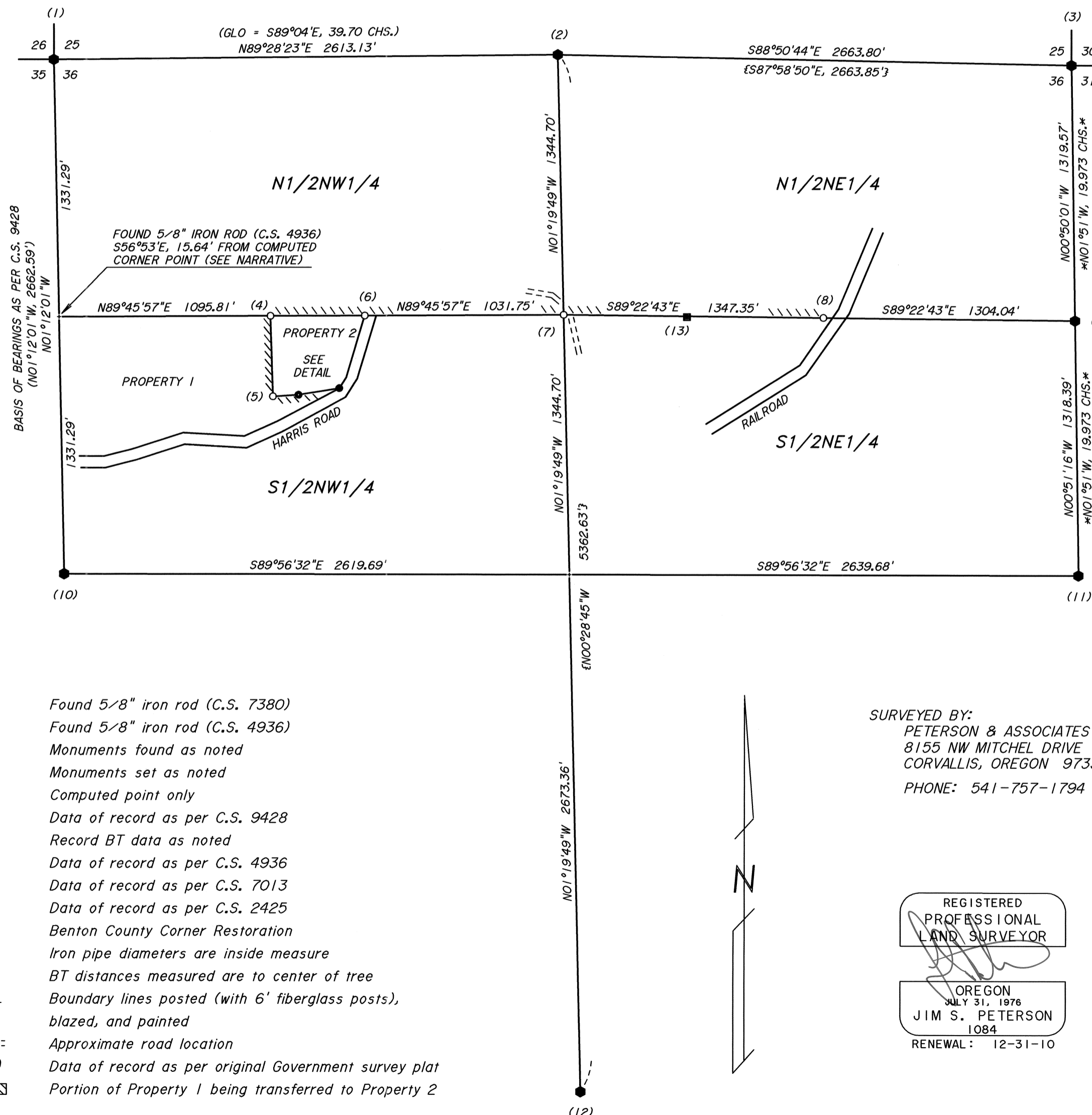
M-21531, M-77218, M-276470-99, and M-290620-00 of the Benton County Deed Records transfer a tract of land (Tax Lot 501 of Tax Map 11-7-36) based upon C.S. 4936. This tract is also Property 2 of the above noted property line adjustment. C.S. 4936 established erroneous positions for the 1/4 corner and N1/16 corner of Sections 35 and 36 (as noted on this survey and C.S. 9428), and then proceeded to establish boundaries as called in the above noted deeds. Said deeds call for the North line of Tax Lot 501 to be along the North line of the SW1/4NW1/4 of Section 36, and also calls for monuments and dimensions as per C.S. 4936. C.S. 4936 did not subdivide Section 36, used erroneous corners on the West line of Section 36, and does not directly call for the North line of the SW1/4NW1/4 as the deeds do. We find that the monuments called along the North line of the above noted deeds are actually North of the Section subdivision line, and therefore create an overlap with the property to the North (owned by Starker Forests). In order to correct this overlap Property 1 will transfer an area to Property 2 equal in size to the above noted overlap. This will be done in exchange for an agreement by the owner of Property 2 to relinquish any rights he may have to land North of the North line of the SW1/4NW1/4, or otherwise outside of the boundaries of Property 2 as surveyed by C.S. 4936.

Monuments found as per BCCR 1101, BCCR 1102, BCCR 116100200R1, BCCR 1159, C.S. 2425, C.S. 7013, and Old Corner Restoration Book 1, Page 214 were held as control for this survey.

- (A) = N01°44'12"W 20.50'
- (B) = N89°45'57"E 30.00'
- (C) = N16°54'20"E 33.25'
- (D) = N86°23'43"E 30.01'
- (E) = N86°23'43"E 103.38'
- [N88°12'E, 103.38']



DETAIL (SCALE: 1" = 100')



- Found 5/8" iron rod (C.S. 7380)
- Found 5/8" iron rod (C.S. 4936)
- Monuments found as noted
- Monuments set as noted
- + Computed point only
- () Data of record as per C.S. 9428
- < > Record BT data as noted
- [] Data of record as per C.S. 4936
- £ £ Data of record as per C.S. 7013
- * * Data of record as per C.S. 2425
- BCCR Benton County Corner Restoration
- Iron pipe diameters are inside measure
- BT distances measured are to center of tree
- Boundary lines posted (with 6' fiberglass posts), blazed, and painted
- ==== Approximate road location
- (GLO) Data of record as per original Government survey plat
- ▨ Portion of Property 1 being transferred to Property 2

SURVEYED BY:
PETERSON & ASSOCIATES
8155 NW MITCHEL DRIVE
CORVALLIS, OREGON 97330
PHONE: 541-757-1794

REGISTERED
PROFESSIONAL
LAND SURVEYOR

OREGON
JULY 31, 1976
JIM S. PETERSON
1084
RENEWAL: 12-31-10

RECORD OF SURVEY

for **STARKER FORESTS, INC.**
STARKER PROPERTIES, LLC
DOUGLAS D. THURBER

in SECTION 36, T11S, R7W, W.M.
BENTON COUNTY, OREGON
MARCH 6, 2001

CORNER NOTES

(1) NW CORNER SECTION 36

Found 1" iron pipe as per BCCR 1101

BT's found:

36" Oak Shell, <N01°10'E, 4.27 Chs.> Axe work visible - Original BT
36" Oak Uproot, <S78°W, 1.77 Chs.> No marks visible - Original BT
10" Oak Snag, <N33°W, 0.117 Chs.> Healed face - BCCR 1101
12" Oak, <S75°W, 0.030 Chs.> Never marked - BCCR 1101

Corner lies on gentle NW slope, in N-S fence line.

(2) 1/4 CORNER SECTIONS 25 & 36

Found 3/4" iron rod as per BCCR 1102

BT's found:

12" Rotted Fir Stub, <S63 1/4°W, 0.635 Chs.> No marks visible - BCCR 1102
24" Maple Uproot, <S72°E, 0.142 Chs.> No marks visible - BCCR 1102

BT's set:

28" Fir, N08°E, 45.7 ft. Marked: "1/4 S25 BT"
30" Fir, N71°W, 54.3 ft. Marked: "1/4 S25 BT"
24" DbL. Maple, S54°E, 35.7 ft. Marked: "1/4 S36 BT"
20" Oak, S14°W, 43.1 ft. Marked: "1/4 S36 BT"

Corner lies in bottom of small draw.

(3) NE CORNER SECTION 36

Found 3 1/4" brass cap as per BCCR 116100200R1

Corner lies on steep North slope.

(4) ANGLE POINT NO. 3 - SECTION 36

Set 3/4" X 30" iron pipe with plastic cap (LS1084)

BT's set:

20" Oak, S52°W, 19.7 ft. Marked: "AP3 S36 BT"
14" Fir, N04°E, 14.1 ft. Marked: "AP3 S36 BT"

Found 5/8" iron rod, N54°56'E, 35.89 ft. - C.S. 4936
Corner lies 15' South and 30' West of fences.

(5) ANGLE POINT NO. 4 - SECTION 36

Set 3/4" X 30" iron pipe with plastic cap (LS1084)

BT's set:

18" Fir, S52°E, 32.4 ft. Marked: "AP4 S36 BT"
16" Fir, S87°W, 113.7 ft. Marked: "AP4 S36 BT"

Corner lies 50' South of fence and 5' North of gravel drive.

(6) ANGLE POINT NO. 2 - SECTION 36

Set 3/4" X 30" iron pipe with plastic cap (LS1084)

BT's set:

30" Oak, N62°E, 13.7 ft. Marked: "AP2 S36 BT"
14" Fir, N30°W, 29.6 ft. Marked: "AP2 S36 BT"

Found 5/8" iron rod, N16°54'E, 33.25 ft. - C.S. 4936
Corner lies 30' West of center of Harris road.

(7) CN1/16 CORNER SECTION 36

Set 3/4" X 30" iron pipe with plastic cap (LS1084)

BT's set:

20" Fir, S16°W, 30.7 ft. Healed face
10" Oak, N87°W, 13.2 ft. Healed face

These BT's were set as references to the rod set in C.S. 7013,
but here refer to the pipe set.

Found 5/8" iron rod, S00°34'E, 4.33 ft. - C.S. 7013
Corner lies 5' West of gravel drive and 12' East of N-S fence.

(8) ANGLE POINT NO. 1 - SECTION 36

Set 3/4" X 30" iron pipe with plastic cap (LS1084)

BT's set:

26" Fir, N85°W, 17.1 ft. Marked: "AP1 S36 BT"
18" W. Fir, S47°W, 17.8 ft. Marked: "AP1 S36 BT"

Found 5/8" iron rod, S11°14'W, 2.26 ft. - C.S. 7013
Corner lies 1' West of railroad R/W fence.

(9) N1/16 CORNER SECTIONS 31 & 36

Found 1" iron rod as per C.S. 2425

BT's set:

16" Oak, N04°E, 32.6 ft. Marked: "N1/16 S31 BT"
5" Fir, N85°W, 26.4 ft. Marked: "N1/16 S36 BT"

Corner lies on bench, 200' West of dirt road.

(10) 1/4 CORNER SECTIONS 35 & 36

Found 3/4" iron pipe (12" below surface) as per BCCR 1159

BT's found:

Rotted Maple Stump, <N75°45'E, 0.789 Chs.> No marks visible - C.S. 73
Cedar BT's set in C.S. 4936 and 7013 are now uproots.

BT's set:

14" Cedar, S35°E, 26.8 ft. Marked: "1/4 S36 BT"
12" Alder, N11°E, 14.3 ft. Marked: "1/4 S36 BT" (in bark)
10" Fir, N61°W, 38.0 ft. Marked: "1/4 S35 BT"
10" Fir, S73°W, 63.3 ft. Marked: "1/4 S35 BT"

Found 3/4" iron pipe, S56°40'E, 30.01 ft. (See C.S. 9428)
Corner lies on swampy South slope, 300' North of railroad tracks.

(11) 1/4 CORNER SECTIONS 31 & 36

Found 3/4" eye bolt as per Old Corner Book No. 1, Page 214

BT's found:

Rotted Fir Stump, <N66°E, 0.487 Chs.> No marks visible - Page 214
18" W. Fir, <S31°45'E, 0.434 Chs.> Healed face - Page 214
20" Rotted Maple Stump, <N85°30'W, 0.360 Chs.> No marks visible - Page 214
34" Fir Stump, <N88°30'W, 0.989 Chs.> Healed face - Page 214
32" Fir, <N44°W, 37.4 ft.> Healed face - C.S. 7013

Corner lies on NE slope.

(12) 1/4 CORNER SECTIONS 1 & 36

Found 5/8" iron rod as per C.S. 7013

BT's found:

40" Fir Stump, <N74°E, 46.2 ft.> Scribing visible - Original BT
40" Fir Stump, <S50°E, 42.24 ft.> Scribing visible - Original BT
22" W. Fir, <S38°W, 63.1 ft.> Healed face - C.S. 7013
20" Fir, <N25°E, 21.75 ft.> Healed face - C.S. 7013

Corner lies on gentle NW slope.

(13) FOUND IRON ROD (C.S. 7380)

Found rod to be S89°22'43"E, 639.78' and S00°37'17"W, 4.04' from
Corner No. (7).

SURVEYED BY:
PETERSON & ASSOCIATES
8155 NW MITCHEL DRIVE
CORVALLIS, OREGON 97330
PHONE: 541-757-1794

