

BASIS OF BEARINGS
 A - B
 (N 0°03'00"W 529.47)R14
 N 00°03'00"W 529.39'

LEGEND

-Found survey monument as noted
 - ALC...Aluminum Cap on 5/8" iron rod
 - YPC...Yellow Plastic Cap on 5/8" iron rod
 -Set monument - 5/8"x 30" rebar with red plastic cap stamped "NORTHSTAR SURVEYING"
 - ⊙.....Set monument - 1-3/8" brass cap, stamped "NSTAR," in sidewalk.
 - ().....Monument or record data from the following source:
- R1 - CS 5584
 - R2 - CS 2690
 - R3 - CS 2000
 - R4 - CS 4194
 - R5 - CS 4164
 - R6 - CS 8650
 - R7 - CS 8202
 - R8 - Galloway Hardcopy Survey 12-6 #00024
 - R9 - CS 9334
 - R10 - Book 174, Page 38, Benton County Deed Records
 - R11 - Book 174, Page 40, " " " "
 - R12 - Book 140, Page 294, " " " "
 - R13 - CS 10221
 - R14 - CS 7470
 - R15 - Partition Plat 91-1
 - R16 - Plat of TIMBER ESTATES
 - R17 - Book 190, Page 201, Benton County Deed Records
 - R18 - Book 152, Page 325, " " " "
 - R19 - CS 6058
 - R20 - Galloway Hardcopy Survey 12-6 #00015
 - R21 - Partition Plat 99-37
 - R22 - CS 6058
 - R23 - CS 7011
 - R24 - Road Plan - Route 46, Sec. B, Road No. 109, 1933
 - R25 - CS 7288
 - R26 - CS 9244

REGISTERED PROFESSIONAL LAND SURVEYOR

W. L. Lauer
OREGON
 JULY 21, 1992
W. L. LAUER
 2558
 RENEWS 12/31/2012

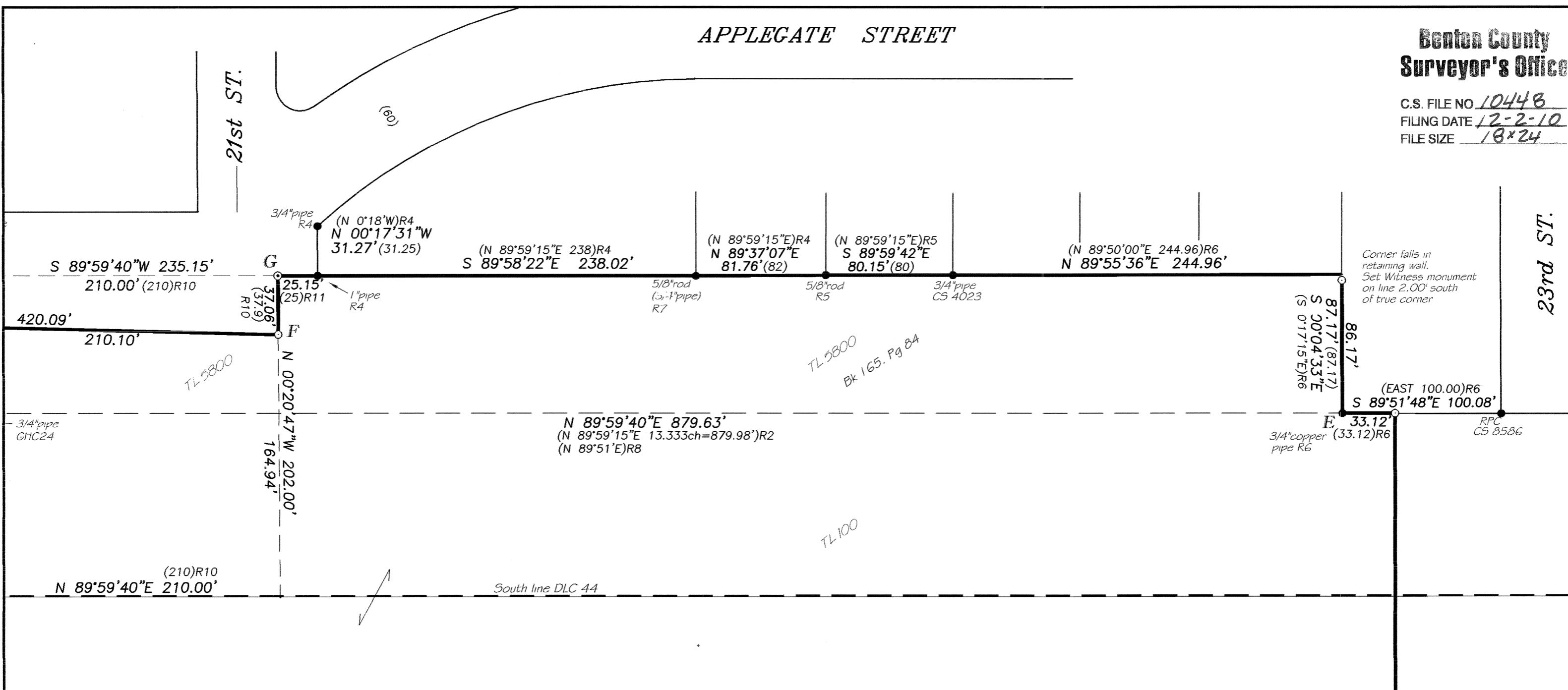
NORTHSTAR SURVEYING, INC.
 720 N.W. 4th Street
 Corvallis, Oregon 97330
 Phone: 541-757-9050

RECORD of SURVEY
 for
PHILOMATH SCHOOL DISTRICT 17J
 in
 SW QUARTER of SECTION 7
 T 12 S, R 5 W, W.M.
 SE QUARTER of SECTION 12
 T 12 S, R 6 W, W.M.
 CITY OF PHILOMATH
 BENTON COUNTY, OREGON

Benton County Surveyor's Office

NOVEMBER 23, 2010
 SHEET 1 of 4

C.S. FILE NO. 10448-3
 FILING DATE 12-2-10
 FILE SIZE 18x24



NARRATIVE

The purpose of this survey was to find or set monuments at the corners of properties owned by the Philomath School District 17J. Deeds and recorded surveys referred to for this survey are listed in the Legend. The property borders Applegate Street. Angle points in the southerly right-of-way (R/W) line South of 21st Street are described by deed and dependent on the location of the Southwest corner of the N.P. Newton Donation Land Claim No. 44 and the west and south lines of that DLC. I found the 3/4" pipe set on the west line of the DLC per the Galloway Hardcopy Survey, the 1/2" pipe, also on the DLC line per CS 8202, and computed the DLC corner by projecting the line between the pipes the record distance from the 3/4" pipe. The position is corroborated by the Oak bearing tree noted on the Galloway Survey. The line from "D" to "E" is parallel to the south line of DLC 44 (see Galloway Hardcopy 12-5 #00024, CS 4646, CS 8586, etc.). I computed R/W angle points "F" and "G" according to deed Book 174, Page 38. I projected the line between the R/W monuments by CS 5584 easterly to its intersection with a line parallel to the west line of the DLC, said parallel line beginning on the south line of the DLC, 210 feet easterly of the DLC corner. I intersected this north-south parallel line with a line from the pipe by CS 4194, parallel to the south line of the DLC. The monument at the NE corner of TL 5800 has been destroyed. I computed its position by distance-distance intersection from the monuments to the South and West, holding data from CS 8650. I computed the position of the Easterly-NE corner at the CS 8650 record distance from the copper pipe at "E" on the line from "E" to "H." The most southerly line of the School District property is the northerly right-of-way line Chapel Drive. The curves in this portion of the R/W were surveyed and monumented in 1933 by W.C. Galloway. I found most of Mr. Galloway's monuments. At the east end of the easterly curve I computed the midpoint between the 2 pipes then computed the radius point by distance-distance intersection, holding the pipe on the southerly R/W line at the west end of this curve and the radii according to the road plan. At the west end of the westerly curve I found the pipe to be 0.20 ft northerly of the northerly R/W curve point, holding the line between the NW corner of DLC 57 and the SE corner of DLC 55 as defining the road centerline. I computed the radius point of this westerly curve by distance-distance intersection, holding the pipe on the southerly R/W line at the east end of this curve and the radii according to the road plan. The Southwest corner of the property is the Southeast corner of TIMBER ESTATES. The monument was missing. I computed the position by intersecting the east line of the subdivision (as defined by the brass cap at the SE corner of DLC 45 and several Lot corner monuments to the North) with the northerly R/W line of Chapel Road. The iron shafts set per Hardcopy Survey 12-6 #00015 and held as the SE and SW corners of Parcel 2 of Partition Plat 99-37 have been destroyed. I computed the SE corner of Parcel 2 by projecting the east line of TIMBER ESTATES northerly and intersecting it with a line 33.00 feet northerly of, and parallel to, the north line of the Subdivision. I computed the SW corner of Parcel 2 by intersecting that same 33 foot offset line with the line between the 5/8" rod at the NW corner of the Subdivision and the 2" shaft at the NW corner of Parcel 1 of Partition Plat 91-1. The easterly portion of TL 6000 was dedicated to the City of Philomath for street purposes per Book 183, Page 748. This dedication was vacated per M-162797-93. This action conveyed the westerly "half" of that "street" to the contiguous properties on the west side and the easterly "half" of that "street" to the contiguous properties on the east side. I found monuments from CS 5584 and CS 7288 that define the west line of that "street" and projected that line northerly to the NW corner of the vacated street at the intersection with the southerly R/W line of Applegate St. I found the 5/8" rod at the SW corner of the vacated street and computed the south line parallel to the Applegate Street R/W as shown on CS 5584. I projected that south line easterly to the east line as defined by monuments "A" and "C." I computed the midpoints of the north and south ends of the vacated street then intersected that line with a projection of the line between the monuments by CS 7288 to get the SE corner of TL 6001.

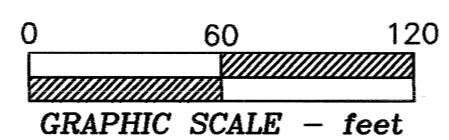
TL 100

Bk 152, Pg 325

Bk 190, Pg 201

REGISTERED PROFESSIONAL LAND SURVEYOR

W. L. LAUER
OREGON
JULY 21, 1992
W. L. LAUER
2558
RENEWS 12/31/2012



RECORD of SURVEY
for
PHILOMATH SCHOOL DISTRICT 17J
in
SW QUARTER of SECTION 7
T 12 S, R 5 W, W.M.
SE QUARTER of SECTION 12
T 12 S, R 6 W, W.M.
CITY OF PHILOMATH
BENTON COUNTY, OREGON

NOVEMBER 23, 2010
SHEET 2 of 4

(S 0°00'45"E 778.14)R18

(S 0°00'45"E 1167.06)R17+R18
(S 0°01'22"E 1167.13'

(388.92)R17

NORTHSTAR SURVEYING, INC.
720 N.W. 4th Street
Corvallis, Oregon 97330
Phone: 541-757-9050

TL 100 (S 89°59'15"W 996.86)R19
TL 400

East line
TL 100

5/8" rod (R22)
in concrete, at
fence corner

S 89°54'29"W 124.78'
(S 89°59'15"W 124.98)R19

3/4" rod (R22)
in concrete, at
fence corner

TL 400
M-65516-76

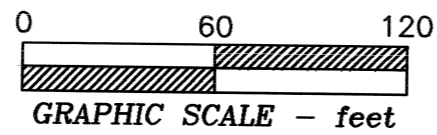
RECORD of SURVEY
for
PHILOMATH SCHOOL DISTRICT 17J
in
SW QUARTER of SECTION 7
T 12 S, R 5 W, W.M.
SE QUARTER of SECTION 12
T 12 S, R 6 W, W.M.
CITY OF PHILOMATH
BENTON COUNTY, OREGON

NOVEMBER 23, 2010
SHEET 3 of 4

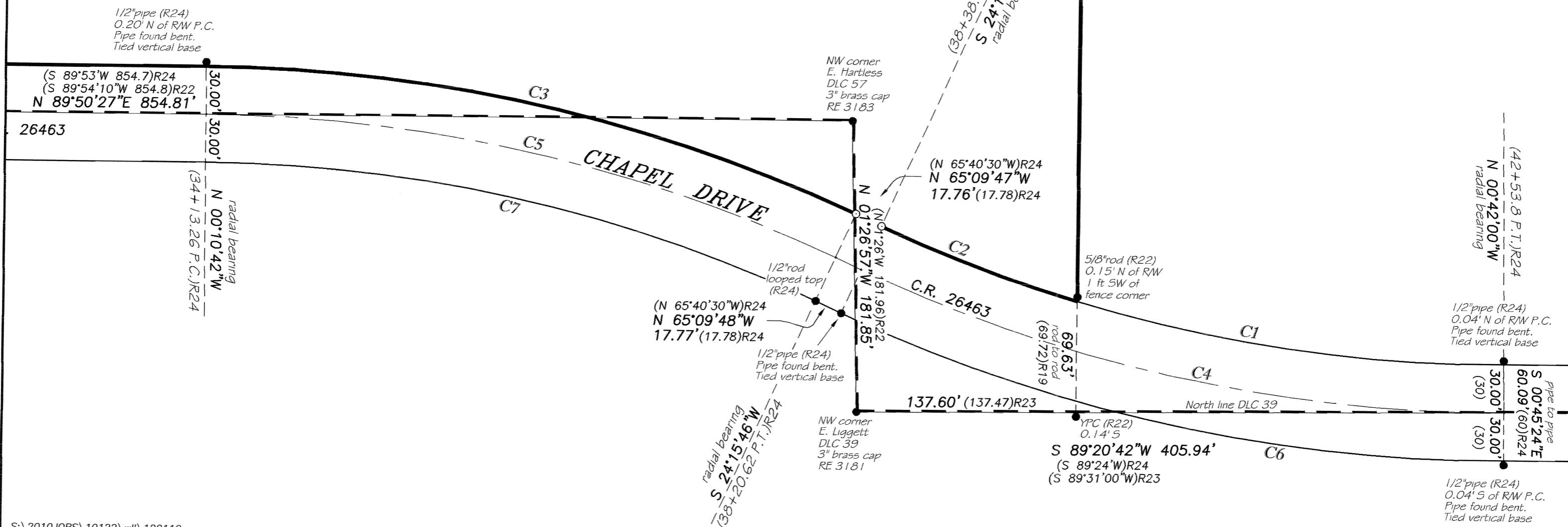
REGISTERED
PROFESSIONAL
LAND SURVEYOR

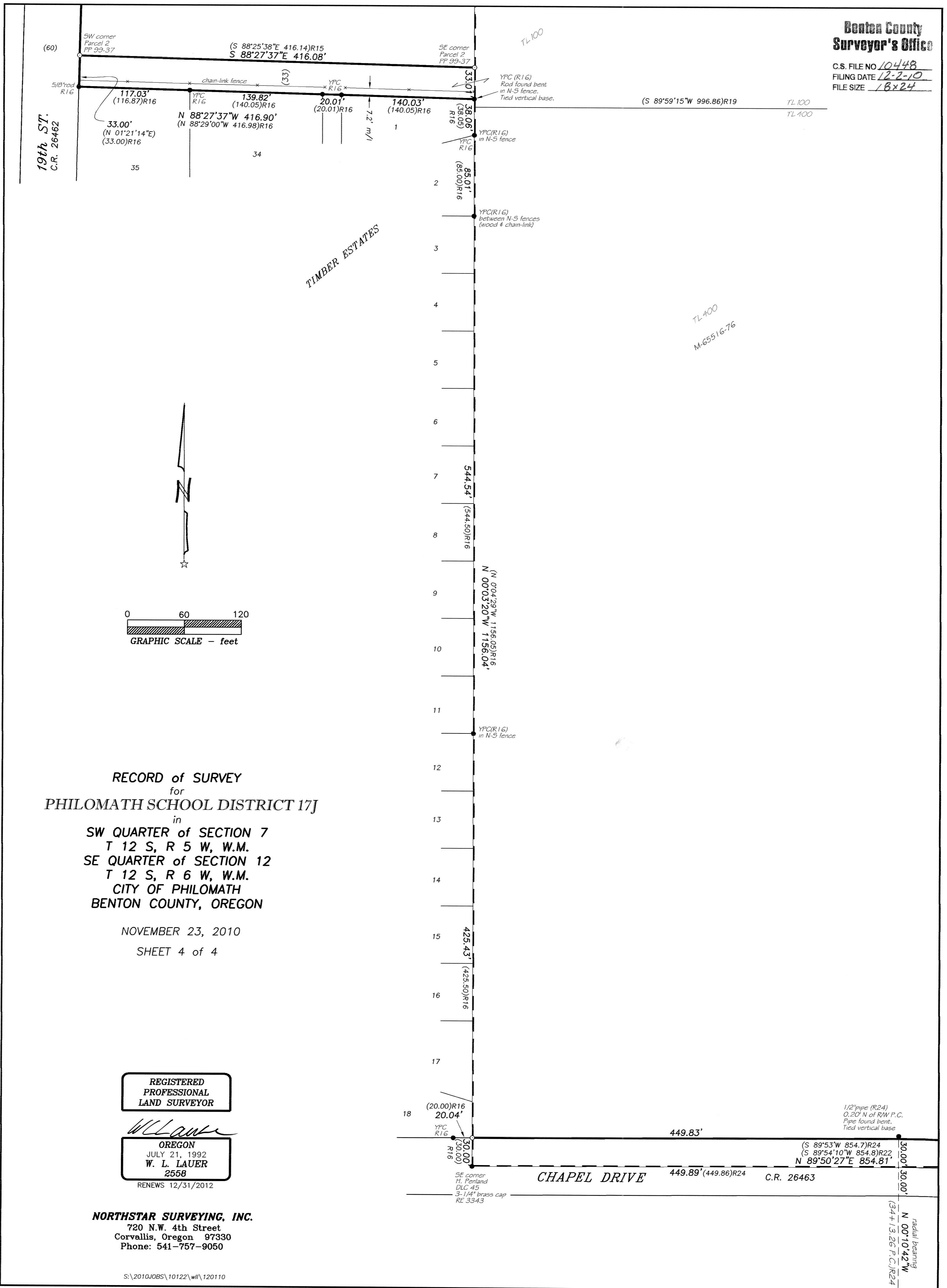
W. L. Lauer
OREGON
JULY 21, 1992
W. L. LAUER
2558
RENEWS 12/31/2012

NORTHSTAR SURVEYING, INC.
720 N.W. 4th Street
Corvallis, Oregon 97330
Phone: 541-757-9050



Curve	Radius	Length	Delta	Chord
C1	924.93'	271.44'	16°48'52"	N 82°17'34" W 270.46'
C2	924.93'	131.40'	8°08'23"	N 69°48'57" W 131.29'
C3	984.93'	420.15'	24°26'27"	N 77°57'28" W 416.97'
C4	954.93'	415.90'	24°57'15"	N 78°13'22" W 412.62'
	(954.93)R24	(415.42)	(24°55'30")	(N 78°08'15" W) (412.15)R24
C5	954.93'	407.35'	24°26'27"	N 77°57'28" W 404.27'
	(954.93)R24	(407.36)	(24°26'30")	(N 77°53'45" W) (404.28)R24
C6	984.93'	428.97'	24°57'15"	N 78°13'22" W 425.59'
C7	924.93'	394.55'	24°26'27"	N 77°57'28" W 391.57'

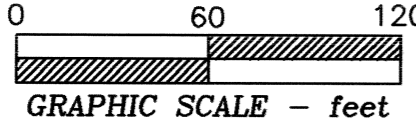




19th St.
C.R. 26462

TIMBER ESTATES

TL400
M-65516-76



RECORD of SURVEY
for
PHILOMATH SCHOOL DISTRICT 17J
in
SW QUARTER of SECTION 7
T 12 S, R 5 W, W.M.
SE QUARTER of SECTION 12
T 12 S, R 6 W, W.M.
CITY OF PHILOMATH
BENTON COUNTY, OREGON

NOVEMBER 23, 2010
SHEET 4 of 4

**REGISTERED
PROFESSIONAL
LAND SURVEYOR**

W. Lauer
OREGON
JULY 21, 1992
W. L. LAUER
2558

RENEWS 12/31/2012

NORTHSTAR SURVEYING, INC.
720 N.W. 4th Street
Corvallis, Oregon 97330
Phone: 541-757-9050

Radial bearing
N 00°10'42"W
(34+13.26 F.C.)R24