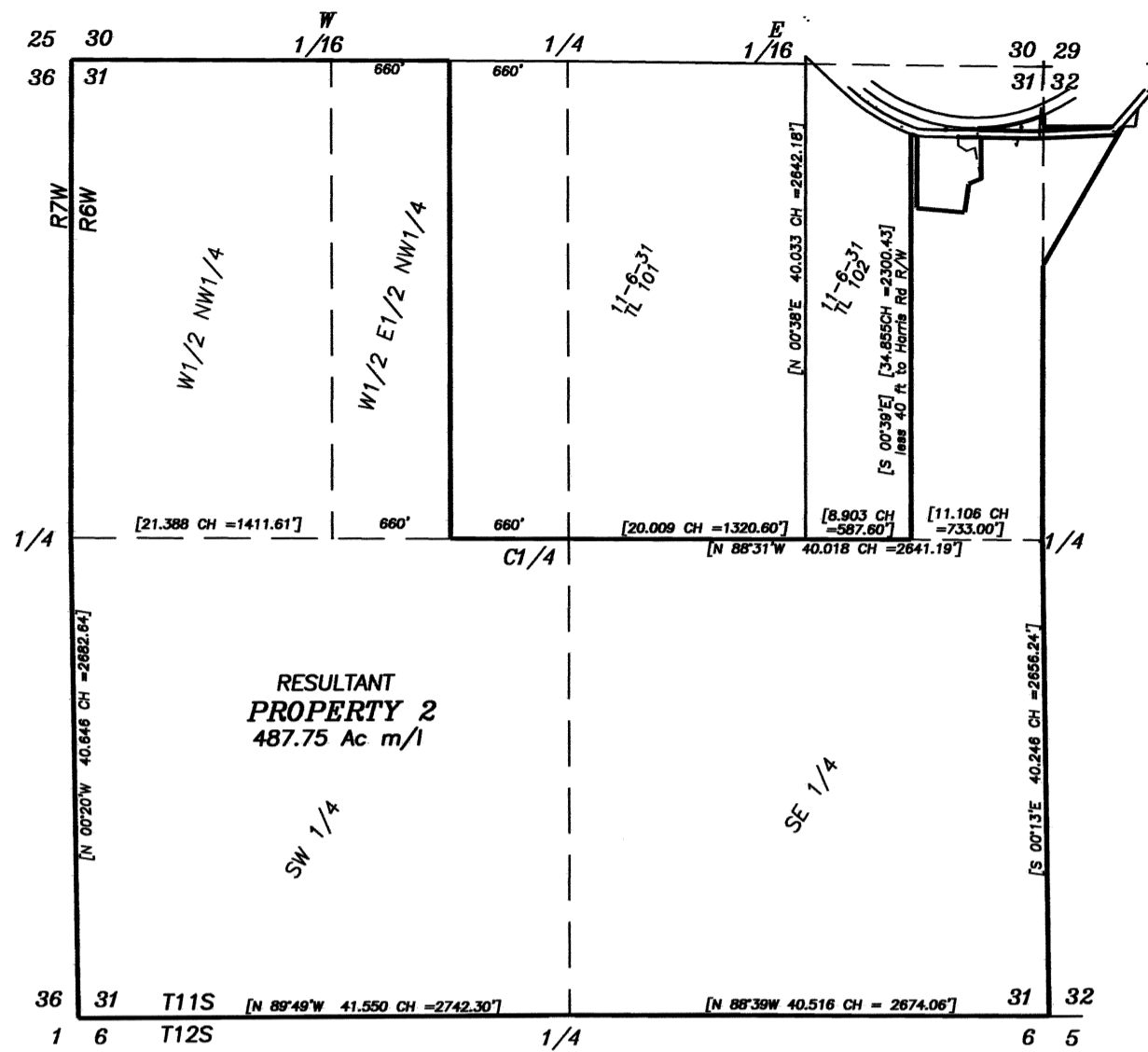


BENTON COUNTY
SURVEYOR'S OFFICE
C.S. FILE NO. 10466
FILING DATE 3-1-11
FILE SIZE 18x24

SCALE: 1 inch = 1000 feet

SEE
DETAIL

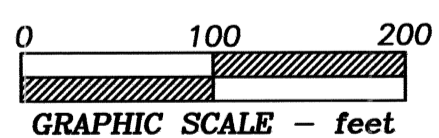
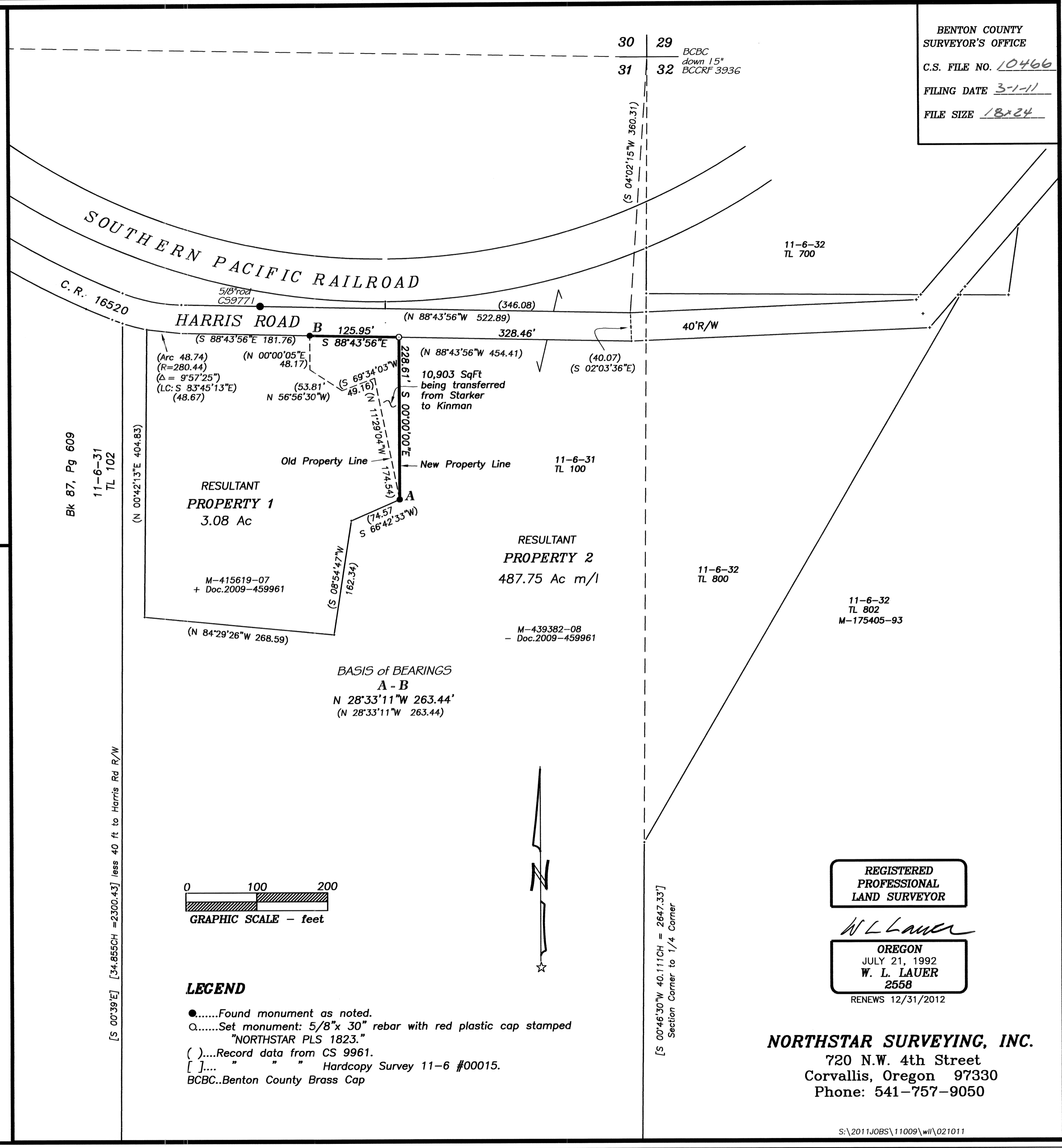


NARRATIVE

This survey is the result of Benton County Community Development Department File No. LU-11-005. It represents a modification of the property line between Property 1, owned by Gary and Marilyn Kinman and Property 2, owned by Starker Forests, Inc. Starker Forests is conveying 10,903 square feet (0.25 acres) to the Kinmans. We used elements of our previous (Northstar Surveying, Inc.) survey, CS 9961, for this project. Thus, the data I show matches that from CS 9961. Starker Forests conveyed a small tract to the Kinmans in 2009 per Doc.2009-459961. That property line adjustment did not require new monumentation as it held existing monuments from CS 9961.

LU-11-005
PROPERTY LINE ADJUSTMENT
APPROVED
Gary Kinman 3/1/2011
planning official date

PROPERTY LINE ADJUSTMENT SURVEY
for
GARY & MARILYN KINMAN
in
NE 1/4 of SECTION 31
T 11 S, R 6 W, W.M.
BENTON COUNTY, OREGON
JANUARY 28, 2011



- LEGEND**
-Found monument as noted.
 -Set monument: 5/8"x 30" rebar with red plastic cap stamped "NORTHSTAR PLS 1823."
 - ().....Record data from CS 9961.
 - []..... " " " Hardcopy Survey 11-6 #00015.
 - BCBC..Benton County Brass Cap

REGISTERED
PROFESSIONAL
LAND SURVEYOR
W. L. LAUER
OREGON
JULY 21, 1992
W. L. LAUER
2558
RENEWS 12/31/2012

NORTHSTAR SURVEYING, INC.
720 N.W. 4th Street
Corvallis, Oregon 97330
Phone: 541-757-9050