

**Benton County
Surveyor's Office**

C.S. FILE NO. 10503
 FILING DATE 10-5-11
 FILE SIZE 11x17

PROPERTY LINE ADJUSTMENT SURVEY
 FOR
Ben & Diane Beddingfield

September 27, 2011

LOTS 8 & 9, SOUTHWOOD PARK ADDITION
 EDWIN A. ABBEY D.L.C. No. 51
 S.E. 1/4 OF SECTION 7
 T.12 S., R.5 W., W.M.,
 BENTON COUNTY, OREGON

Narrative

The purpose of this survey is to monument the adjusted line Lot 8 and Lot 9, Southwood Park Addition, per the City of Philomath, Notice of Planning Official Decision, File No. P11-06.

For control of the North end of the line I held the NW and NE corners of Lot 8 which were replaced in C.S. 8452 and a distance along that line as directed by the owner. For control of the South end of the adjusted line I calculated the position of the radius point by distance/distance intersection holding the NW corner of Lot 10 (155.28') and the common corner to Lots 65 & 66, Second Addition to Southwood Park (205.28') and at a distance Southwesterly of the SW corner of Lot 8 as directed by the owner.

REGISTERED
 PROFESSIONAL
 LAND SURVEYOR

Darryl W. Harms

OREGON
 JULY 30, 1976
 DARRYL W. HARMS
 1079

RENEWAL DATE 6/30/13

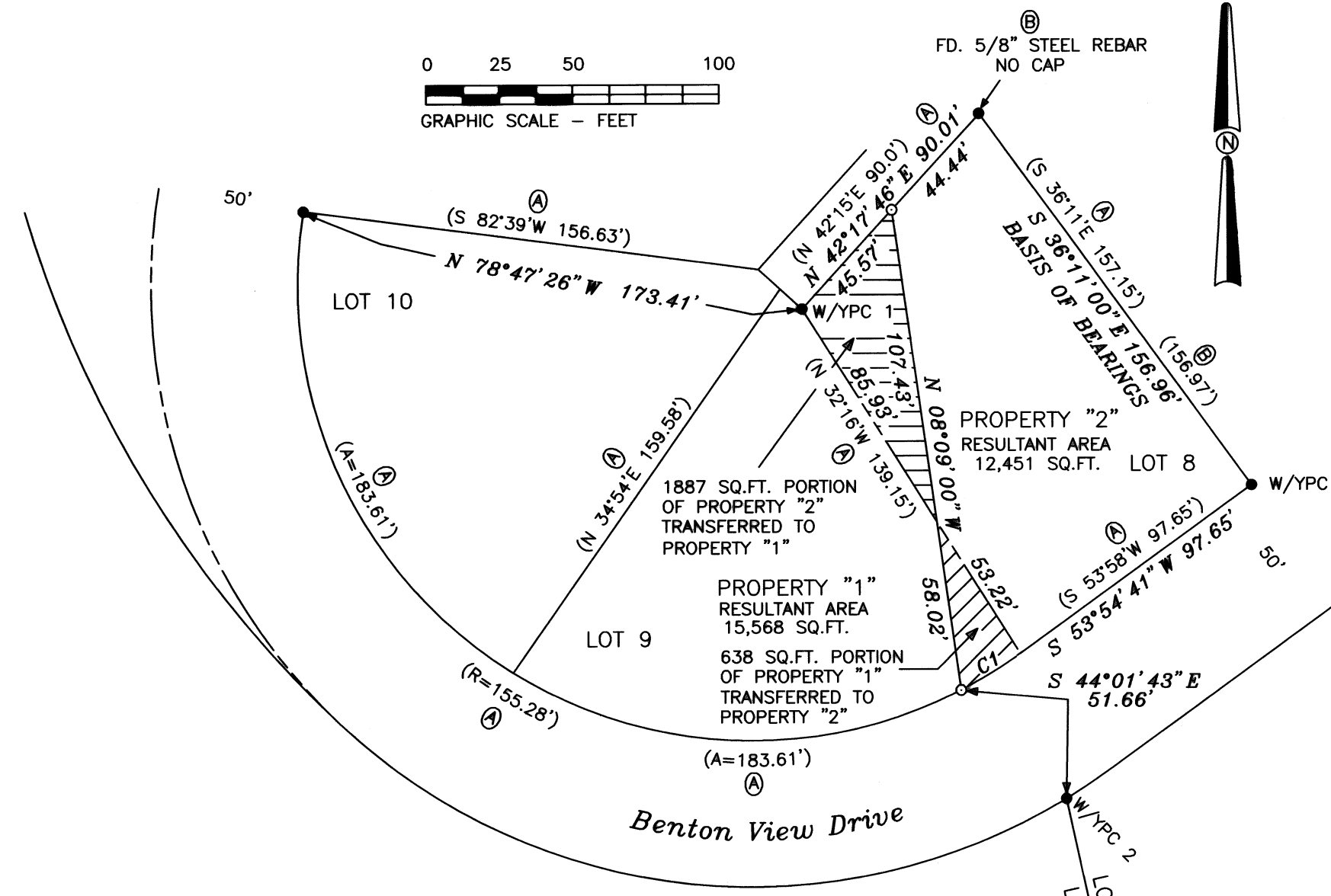
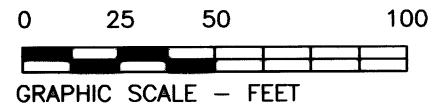
DARRYL W. HARMS, P.L.S.
 P.O. BOX 1051
 CORVALLIS, OR 97339
 PHONE: (541) 745-3948
 E-MAIL
 darrylharms@proaxis.com

P11-06

Property Line Adjustment Approved

SRK
 CITY OF PHILOMATH
 PLANNING OFFICIAL

10-5-11
 DATE



Legend

- MONUMENT FOUND, TYPE & SOURCE NOTED
- SET 5/8" X 30" STEEL REBAR WITH BLUE PLASTIC CAP STAMPED "DARRYL HARMS, PLS 1079"
- W/YPC 1 5/8" STEEL REBAR WITH YELLOW PLASTIC CAP MARKED "WEST SURV. LS 1901" SET IN C.S. 8452
- W/YPC 2 5/8" STEEL REBAR WITH YELLOW PLASTIC CAP MARKED "NORTHSTAR" SET IN "SECOND ADDITION TO SOUTHWOOD PARK"
- () RECORD DATA, SOURCE NOTED
- (A) PLAT OF "SOUTHWOOD PARK ADDITION"
- (B) C.S. 8452