

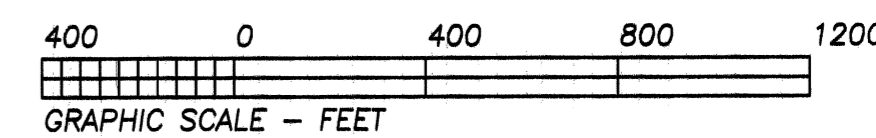
RECORD OF SURVEY  
for  
**WEYERHAEUSER CO.**  
in the  
**NE 1/4 SECTION 22**  
**T 13 S, R 8 W, W.M.**  
**BENTON COUNTY, OREGON**

C.S. FILE NO. 10547  
FILING DATE 6-15-12  
FILE SIZE 18x24

JUNE 8, 2012

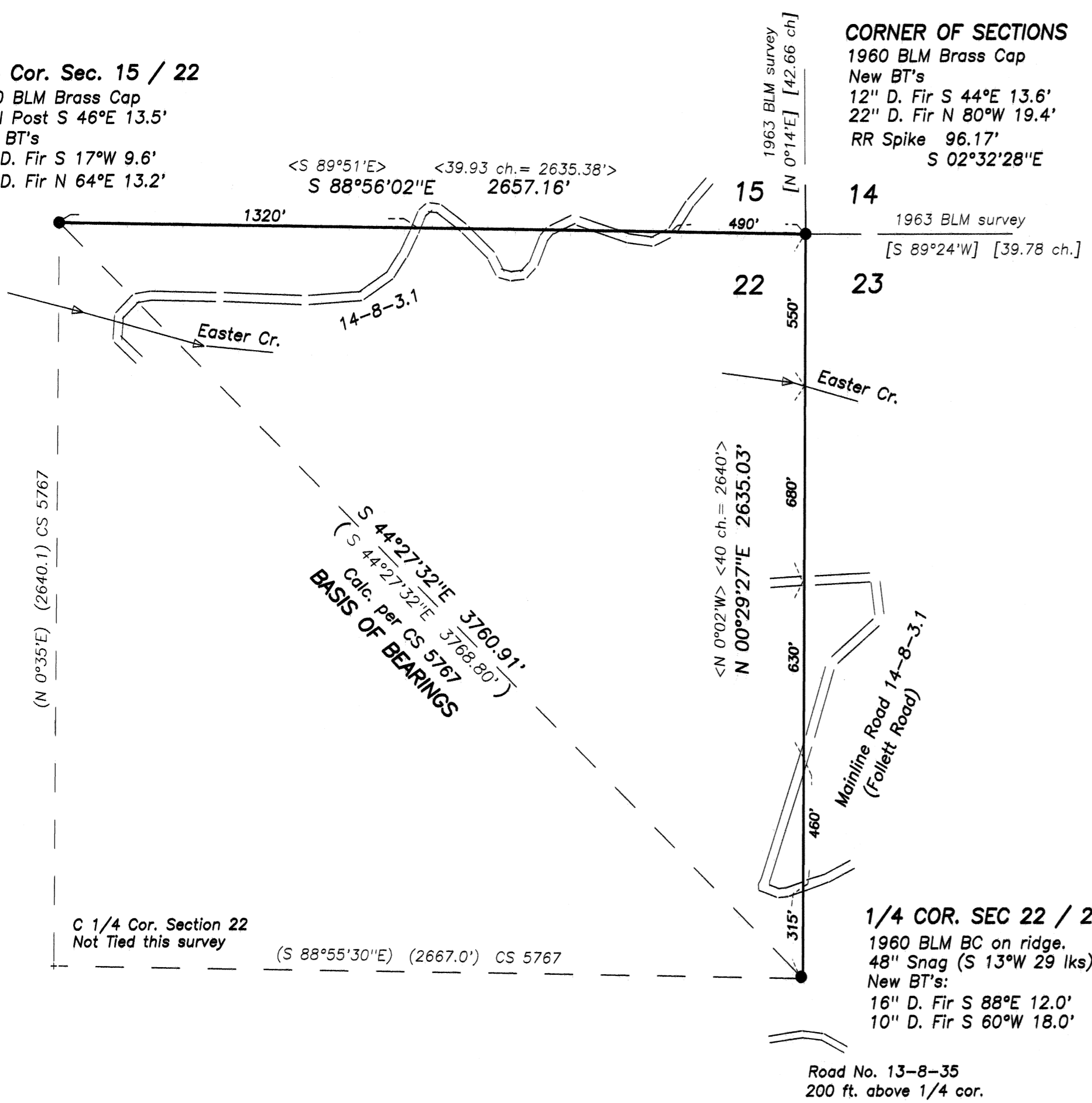
REGISTERED  
PROFESSIONAL  
LAND SURVEYOR  
*[Signature]*  
OREGON  
JULY 26, 1988  
ROBERT ALAN COOK  
2336  
RENEWS: 12/31/2013

**NORTHSTAR SURVEYING, INC.**  
720 N.W. 4th Street  
Corvallis, Oregon 97330  
Phone: 541-757-9050



**1/4 Cor. Sec. 15 / 22**  
1960 BLM Brass Cap  
Steel Post S 46°E 13.5'  
New BT's  
14" D. Fir S 17°W 9.6'  
16" D. Fir N 64°E 13.2'

**CORNER OF SECTIONS**  
1960 BLM Brass Cap  
New BT's  
12" D. Fir S 44°E 13.6'  
22" D. Fir N 80°W 19.4'  
RR Spike 96.17'  
S 02°32'28"E



**LEGEND**

● .....Found Monument; BLM brass cap per plat approved June 11, 1963.

Data of, or computed from, the following:  
( )..CS 5767  
< >.. GLO plat approved Jan. 18, 1898  
[ ].. BLM plat approved June 11, 1963

— Lines marked with orange ribbon, orange painted 1/4 blazes on trees within 5 feet of line and 72" galvanized steel posts at approximately 150 to 200 foot intervals.

**NARRATIVE**

The purpose of this survey was to mark my client's property line along the East half of the north line and the North half of the east line of Section 22. The three monuments shown were all set in 1960 (plat approved in 1963) but the lines were not measured. I was able to calculate a bearing and distance between the 1/4 corners from CS 5767 and used it for my basis of bearings, though it did not fit well. The original GLO measurements are the only record previous to this.