

**SURVEYOR'S NARRATIVE:**

**PURPOSE:**

THE PURPOSE OF THIS SURVEY IS TO ESTABLISH THE BOUNDARY OF LOT 3 IN BLOCK 8 OF "CORVALLIS NORTH COLLEGE HILL" (CP00014) LOCATED IN THE SOUTHEAST 1/4 OF SECTION 34, TOWNSHIP 11 SOUTH, RANGE 5 WEST, WILLAMETTE MERIDIAN.

**BASIS OF BEARING:**

THE BASIS OF BEARING WAS ESTABLISHED BY HOLDING FOUND MONUMENTS (1) AND (2) PER CP00014 AS SHOWN ON MAP.

**BOUNDARY DETERMINATION:**

THE EAST RIGHT-OF-WAY LINE OF THE ALLEY RUNNING NORTH SOUTH THROUGH THE MIDDLE OF BLOCK 8 WAS ESTABLISHED BY HOLDING FOUND MONUMENTS AT (2) AND (4) AS SHOWN ON MAP. I PROPORTIONED THE MEASURED DISTANCE BETWEEN POINTS (2) AND (4) EQUAL DISTANCE TO ESTABLISH THE NORTHWEST CORNER [3A] AND THE SOUTHWEST CORNER [3B] OF LOT 3. THE SOUTHWEST CORNER FALLS 1.26' EAST OF EDGE OF CONCRETE ALLEY, 1.0' NORTHEAST OF POWER POLE AND 1.9' NORTHWEST OF BUILDING CORNER. THE NORTHWEST CORNER FALLS 1.5' EAST OF EDGE OF CONCRETE ALLEY AND 2.65' WEST OF A 5 CLUSTER DECIDUOUS TREE. POINT (3) FIT GOOD FOR DISTANCE BUT IS OFF LINE FROM TRUE POSITION.

I CALCULATED THE SOUTHEAST CORNER [2A] OF BLOCK 8 WITH DISTANCE DISTANCE INTERSECT USING RECORD DISTANCES PER CP00014 AND SP0004-13 HOLDING THE FOUND MONUMENTS AT (2) AND (6). I ESTABLISHED THE NORTHEAST CORNER [6A] AND THE SOUTHEAST CORNER [6B] OF LOT 3 USING RECORD DISTANCES PER SP0004-13 ALONG LINE (6) - [2A]. THE NORTHEAST CORNER FALLS 0.05' WEST OF A 5' WIDE CONCRETE WALK. THE SOUTHEAST CORNER FALLS AT THE BACK OF A 5' WIDE CONCRETE WALK AND 3.65' EAST FROM A FENCE CORNER. FENCE RUNS WEST FROM SAID POINT. POINT (5) IS OF UNKNOWN ORIGIN AND OFF FROM TRUE POSITION. POINT (7) FIT WELL FOR DISTANCE BUT IS OFF LINE FROM TRUE POSITION. POINT (8) IS OFF FROM TRUE POSITION.

REGISTERED PROFESSIONAL LAND SURVEYOR  
*John Seaders*  
 OREGON  
 JULY 22, 1974  
 JOHN SEADERS  
 1014  
 EXPIRES 06/30/14

**LEGEND:**

- FOUND MONUMENT OF RECORD, UNLESS OTHERWISE NOTED
- SET 5/8" x 30" I.R. W/YPC STAMPED "SEADERS 1014"
- [ ] CALCULATED DATA
- + CALCULATED POINT
- ( ) RECORD DATA
- FD FOUND
- I.P. IRON PIPE (OUTSIDE DIAMETER, UNLESS OTHERWISE NOTED)
- I.R. IRON ROD
- YPC YELLOW PLASTIC CAP
- C.S. BENTON COUNTY SURVEY
- R1 COUNTY SURVEY REFERENCE
- ① FOUND MONUMENT REFERENCE
- 2A CALCULATED REFERENCE POINT
- - - ORIGINAL LOT LINE
- PROPERTY LINE

MSS INC  
 215 NW 4TH  
 CORVALLIS, OR 97333  
 (541) 753-1320  
 12035/MH/BND.dwg

BOUNDARY SURVEY  
 FOR  
 LAUREN CASSIDY  
 LOCATED IN  
 BLOCK 8, COLLEGE HILL ADDITION  
 SE 1/4 SEC. 34, T.11S., R.5W., W.M.  
 TO  
 THE CITY OF CORVALLIS  
 BENTON COUNTY, OREGON  
 NOVEMBER 30, 2012

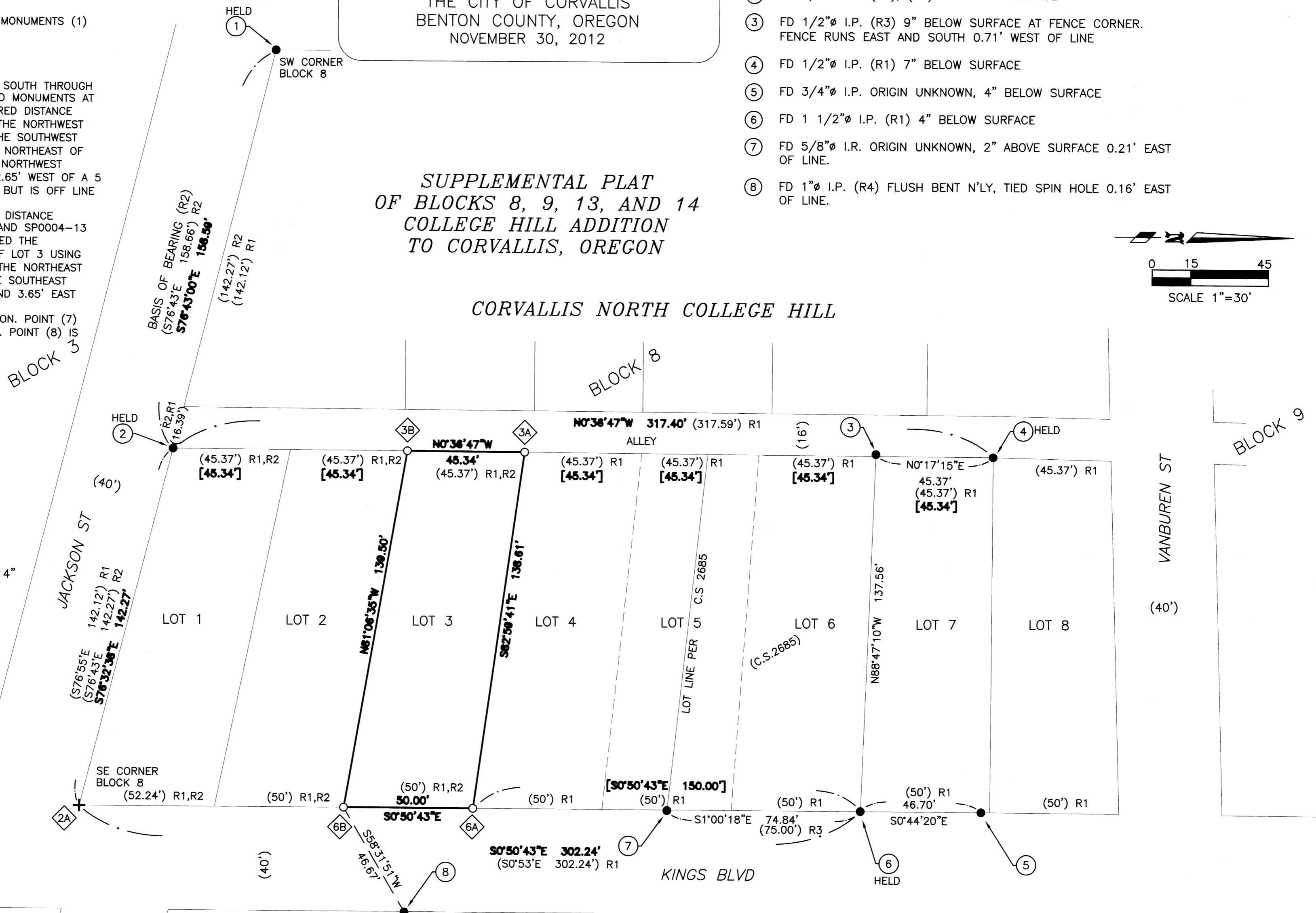
**FOUND MONUMENT REFERENCE:**

- ① FD 1"Ø I.P. (R1), (R2) 4" DOWN AND IN 3" FROM BACK OF SIDEWALK
- ② FD 1/2"Ø I.P. (R1), (R2) 1" BELOW SURFACE
- ③ FD 1/2"Ø I.P. (R3) 9" BELOW SURFACE AT FENCE CORNER. FENCE RUNS EAST AND SOUTH 0.71' WEST OF LINE
- ④ FD 1/2"Ø I.P. (R1) 7" BELOW SURFACE
- ⑤ FD 3/4"Ø I.P. ORIGIN UNKNOWN, 4" BELOW SURFACE
- ⑥ FD 1 1/2"Ø I.P. (R1) 4" BELOW SURFACE
- ⑦ FD 5/8"Ø I.R. ORIGIN UNKNOWN, 2" ABOVE SURFACE 0.21' EAST OF LINE.
- ⑧ FD 1"Ø I.P. (R4) FLUSH BENT N'LY, TIED SPIN HOLE 0.16' EAST OF LINE.

**Benton County  
 Surveyor's Office**  
 C.S. FILE NO. 10568  
 FILING DATE 11-3-12  
 FILE SIZE 18x24

**SUPPLEMENTAL PLAT  
 OF BLOCKS 8, 9, 13, AND 14  
 COLLEGE HILL ADDITION  
 TO CORVALLIS, OREGON**

**CORVALLIS NORTH COLLEGE HILL**



**SURVEY REFERENCE:**

- R1 "SUPPLEMENTAL PLAT OF BLOCKS 8,9,13, AND 14 COLLEGE HILL ADDITION TO CORVALLIS, OREGON" (SP0004-13)
- R2 "CORVALLIS NORTH COLLEGE HILL" (CP00014)
- R3 C.S. 2685
- R4 "CORVALLIS" (CP00013)