

**Benton County
Surveyor's Office**

C.S. FILE NO 10574
 FILING DATE 1-2-13
 FILE SIZE 11x17

NORTHSTAR SURVEYING, INC.

720 N.W. 4th Street
 Corvallis, Oregon 97330
 Phone: 541-757-9050

RECORD OF SURVEY

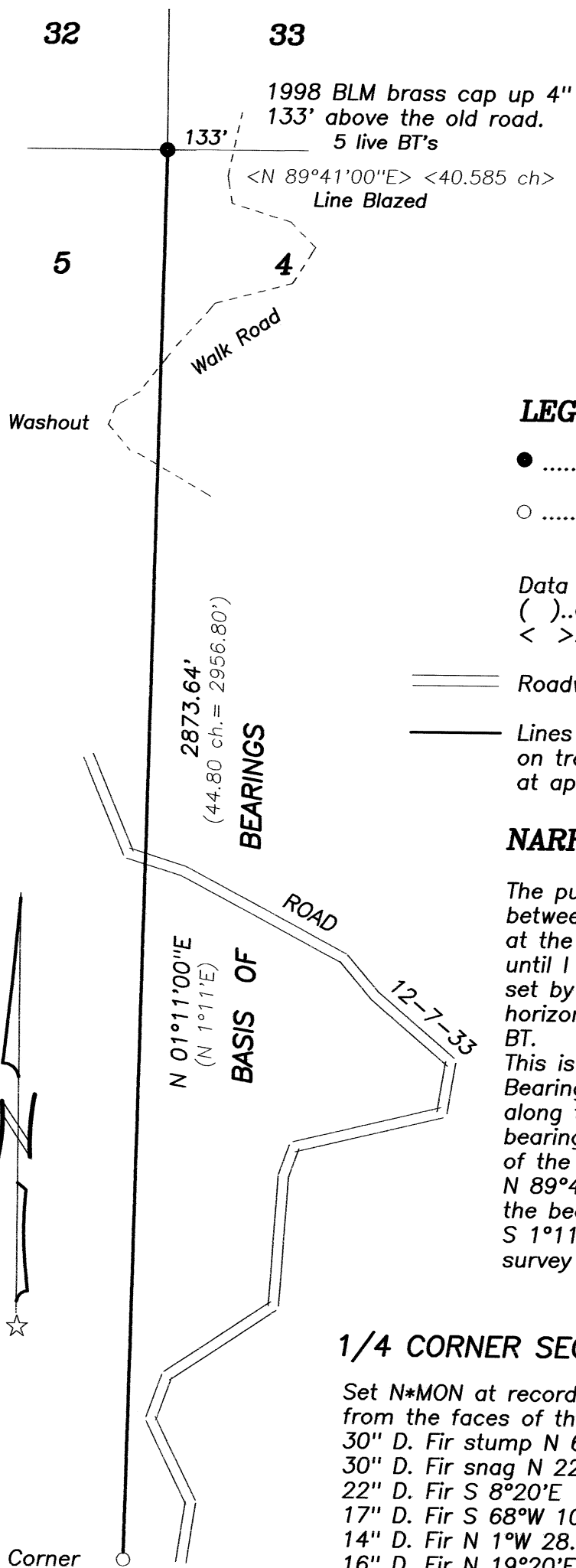
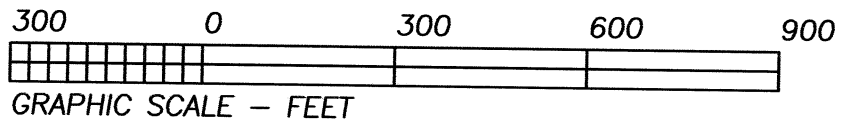
for

WEYERHAEUSER CO.

in the

NW 1/4 of SECTION 4
 T 13 S, R 7 W, W.M.
 BENTON COUNTY, OREGON

NOVEMBER 26, 2012



REGISTERED
 PROFESSIONAL
 LAND SURVEYOR

Robert Alan Cook
 OREGON
 JULY 26, 1988
 ROBERT ALAN COOK
 2336
 RENEWS: 12/31/2013

LEGEND

-Found Monument as noted.
-Set Monument: N*MON = 5/8" x 30" rebar with a red plastic cap stamped " NORTHSTAR SURVEYING ".

Data of, or computed from, the following:
 () ..GLO plat approved June 4, 1892
 < > ..BLM plat approved April 3, 2000

- ==== Roadway
- Lines marked with orange ribbon, orange painted 1/4 blazes on trees within 5 feet of line and 60" galvanized steel posts at approximately 150 to 200 foot intervals.

NARRATIVE

The purpose of this survey was to mark my client's line between the found monuments shown. I did not find the stone at the 1/4 corner. I could not get the bearing trees to fit well until I held the slope distance to the NW BT. The monument is set by intersection between the distance to the faces; horizontal distance to the NE BT and slope distance to the NW BT.

This is the first re-measurement of this line. My Basis of Bearings is the 1892 plat. I located 2 tags and a line tree along the blazed line easterly of the Section corner. My bearing to this line is S 84°40'E. The bearing of the line east of the section corner according to the 2000 BLM plat is N 89°41'E. Either this line is drastically off (which I doubt) or the bearing of my line should be S 4°00'47"E rather than S 1°11'W. I felt that I did not tie enough of the 2000 BLM survey to use it for basis of bearings.

1/4 CORNER SECTIONS 4 & 5

- Set N*MON at record distance—distance intersection from the faces of the found original bearing trees.
- 30" D. Fir stump N 62°20'E 5.29 ft. to scribed face.
- 30" D. Fir snag N 22°W 20.9 ft to healed face.
- 22" D. Fir S 8°20'E 12.9 ft. healed face (unknown origin)
- 17" D. Fir S 68°W 10.2 ft. healed face (unknown origin).
- 14" D. Fir N 1°W 28.8 ft. scribed "1/4S5" above "BT".
- 16" D. Fir N 19°20'E 36.7 ft. scribed "1/4S4" above "BT".

Corner lies on a steep east slope about 100' above the road and about 100' south of a ridge.