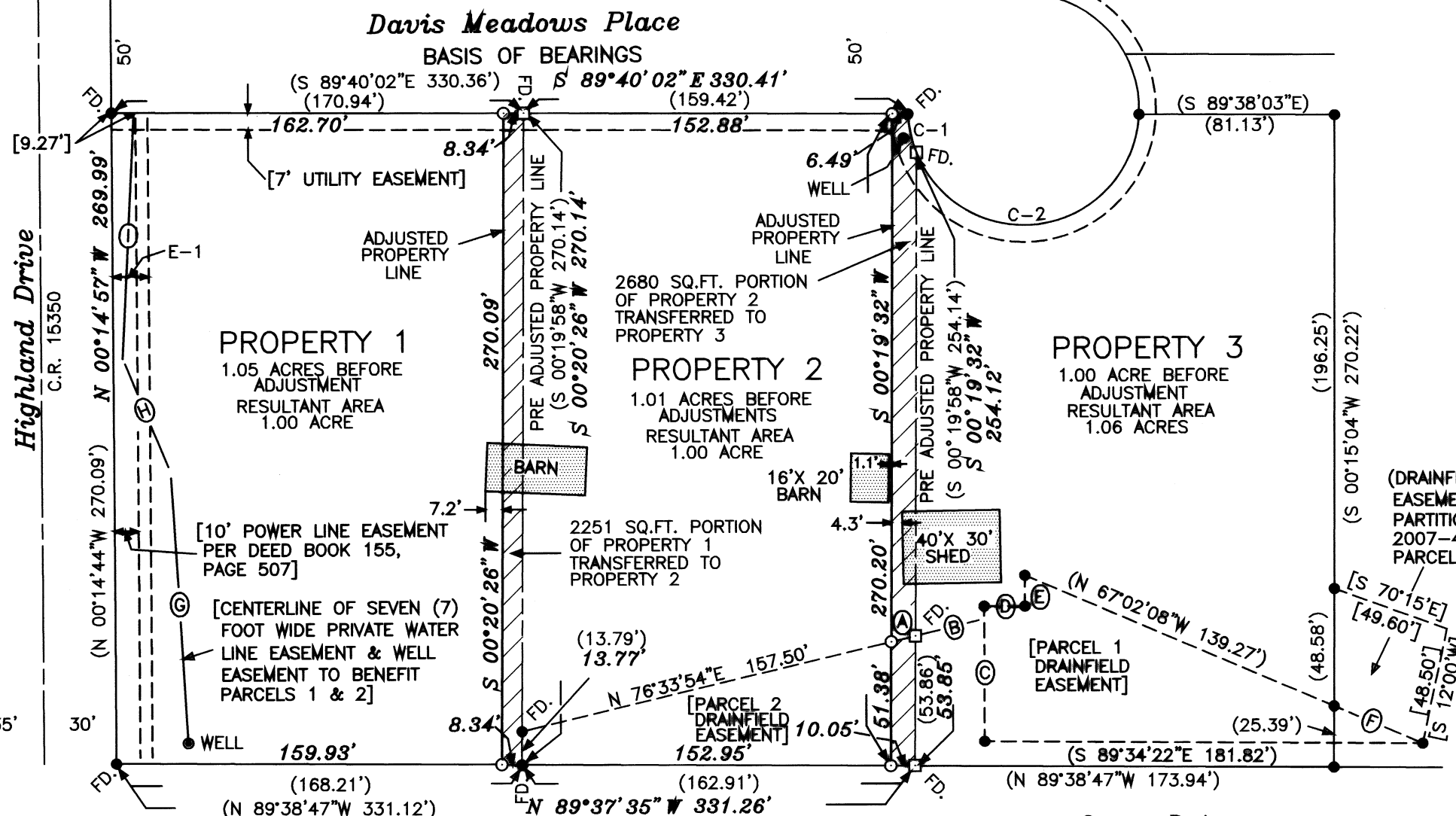


**Benton County
Surveyor's Office**
C.S. FILE NO. 10600
FILING DATE 5-29-13
FILE SIZE 11x17



LU-13-018 & LU-13-019
MAP OF:
PROPERTY LINE ADJUSTMENT
SURVEY FOR
**Lorin and Kathryn Davis
and
Gary and Lori Moss**
IN
PARCELS 4, 5 & 6
PARTITION PLAT 2010-03
SOUTH HALF of SECTION 14
T.11 S., R.5 W., W.M.
BENTON COUNTY, OREGON
MAY 2, 2013

- Legend**
- 5/8" STEEL REBAR WITH YELLOW PLASTIC CAP STAMPED "DARRYL HARMS PLS 1079" PER PARTITION PLAT 2007-40
 - 5/8" REBAR WITH RED PLASTIC CAP STAMPED "NORTHSTAR SURVEYING" PER PARTITION PLAT 2010-03
 - SET 5/8" X 30" STEEL REBAR WITH BLUE PLASTIC CAP STAMPED "DARRYL HARMS PLS 1079"
 - FD. MONUMENT OF RECORD FOUND, TYPE & SOURCE NOTED ABOVE.
 - () RECORD DATA FROM PARTITION PLAT 2010-03
 - [] RECORD DATA FROM PARTITION PLAT 2007-40

REGISTERED
PROFESSIONAL
LAND SURVEYOR

Darryl W. Harms

OREGON
JULY 30, 1976
DARRYL W. HARMS
1079
RENEWAL DATE 6/30/13

DARRYL W. HARMS, P.L.S.
P.O. BOX 1051
CORVALLIS, OR 97339
PHONE: (541) 745-3948
E-MAIL
darrylharms@proaxis.com

Narrative

This survey was performed pursuant to conditions of the Benton County Development Department Case File numbers LU-13-018 and LU-13-019 in order to transfer the acreage in excess of 1.00 acre from Parcels 4 & 5 of Partition Plat 2010-03 to Parcel 6. All monuments shown as "FD." were held in position and new monuments set as shown.

Curve Data

CURVE	RADIUS	DELTA	ARC	CHORD
C-1	48.00'	19°42'53"	16.52'	S 11°55'08"E 16.43' S 12°09'29"E 16.48'
C-2	48.00'	155°30'01"	130.27'	N 80°28'25"E 93.81'

Easement Courses

- (A) N 76°33'54"E 10.36'
- (B) (S 76°32'08"W 29.44')
- (C) (S 00°06'50"E 56.03')
- (D) (N 89°53'25"W 16.89')
- (E) (S 00°02'53"E 12.75')
- (F) (N 66°48'38"W 40.04')
- (G) [S 03°36'00"E 115.00']
- (H) [S 22°46'00"E 51.00']
- (I) [S 02°45'45"W 102.37']

Easement

E-1
[15' RESERVATION FOR FUTURE DEDICATION TO BENTON COUNTY FOR ROAD PURPOSES PER 2007-429269 AND 15' ROADWAY EASEMENT GRANTED TO BENTON COUNTY PER 2007-429270]

LU-13-018 & LU-13-019
Property Line Adjustments
Approved

BY: *Gwen Vernet* 5/29/13
BENTON COUNTY PLANNING OFFICIAL DATE