

**Benton County  
Surveyor's Office**

C.S. FILE NO 10635  
FILING DATE 11-22-13  
FILING SIZE 11x17

**RECORD OF SURVEY  
FOR  
KEVIN NICHOLS  
NOVEMBER 21, 2013**

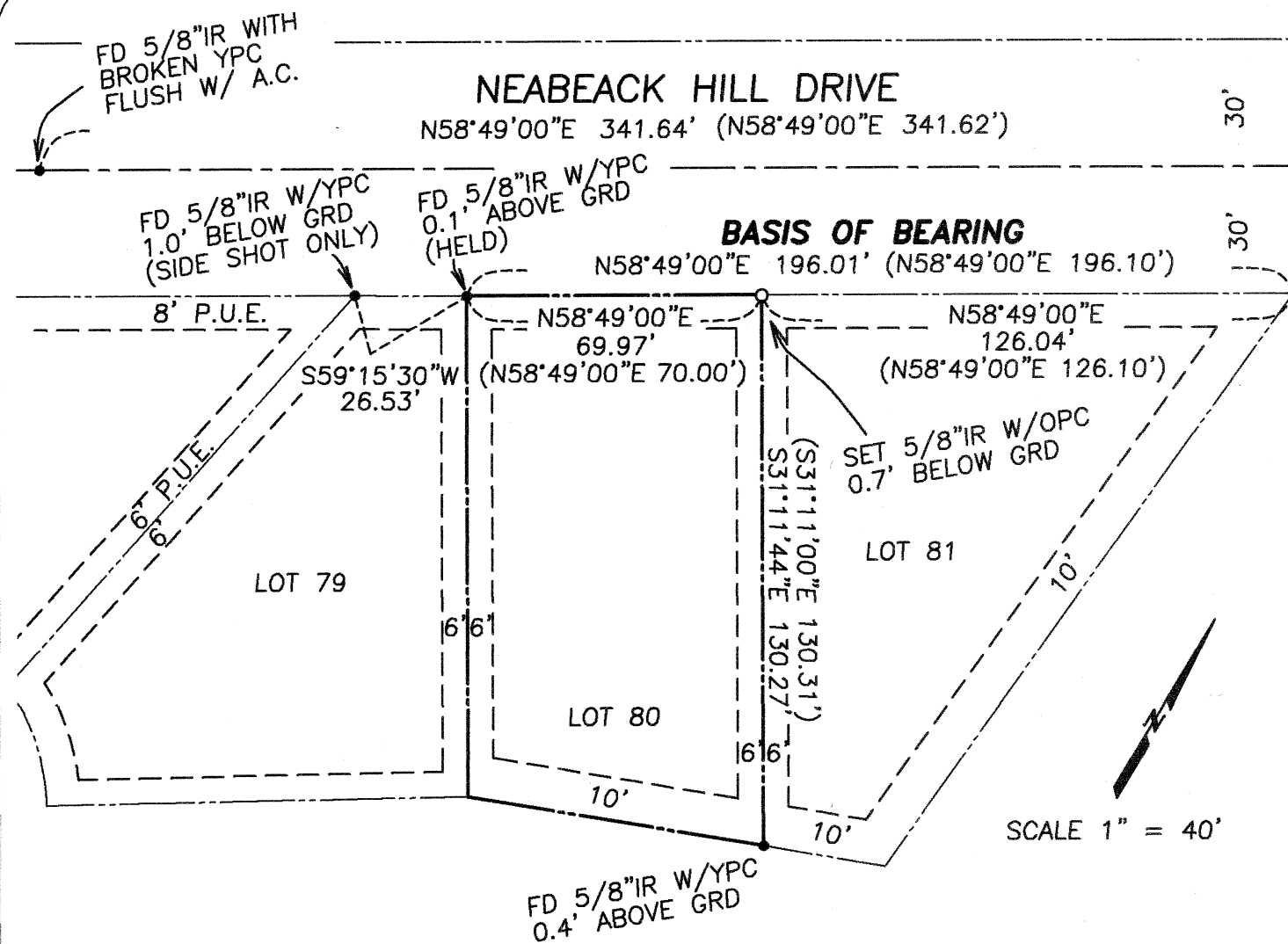
LOCATED IN  
**SE 1/4 NW 1/4 SECTION 7, T.12S., R.5W., W.M.  
PHILOMATH, BENTON COUNTY, OREGON**

**NARRATIVE**

The purpose of this survey is to replace the lost monument set in the Neabeack Hill Subdivision Plat (SP0009-071) at the intersection of the Right-of-Way (R-O-W) line of Neabeack Hill Drive and the boundary line between Lots 80 and 81.

Found monuments at the northwest corner of Lot 80 and the northeast corner of Lot 81 were held for bearing. Measurements between the two monuments were found to be 0.09' short of the record distance, therefore the difference was proportioned between Lots 80 and 81. The distance for Lot 80's northline was shortened by 0.03' and the distance for Lot 81's northline was shortened by 0.06'.

Found-monuments and the set-monument were measured from a randomly positioned control point using a FOCUS 30 ROBOT (2-second instrument). Turned three sets of direct and reverse shots on monuments found and set except as noted.



**LEGEND**

- RECORD SURVEY BOUNDARY
- - - - - PUBLIC UTILITY EASEMENT (P.U.E.)
- FOUND 5/8" ROD W/ YPC MARKED "DEVCO ENG LS 1496"
- SET 5/8" X 30" REBAR W/ OPC MARKED "JD MCGEE INC LS#58902"
- (XX) RECORD INFORMATION PER BENTON COUNTY SUBDIVISION PLAT-  
NEABEACK HILL SUBDIVISION BOOK 9, PG. 71 (SP0009-071)
- OPC ORANGE PLASTIC CAP
- YPC YELLOW PLASTIC CAP
- GRD GROUND SURFACE
- A.C. ASPHALTIC CONCRETE

REGISTERED  
PROFESSIONAL  
LAND SURVEYOR  
*[Signature]*  
OREGON  
FEB. 8, 2000  
**JOHN D. MCGEE**  
#58902

RENEWAL DATE: 12/31/14

**JDMcGee, Inc.**

Engineering & Surveying  
Land Use Planning  
Wastewater Design  
"Solving Problems for You"

1215 Main Street  
PO Box 1472  
Philomath, OR 97370  
(541) 929-4226  
(541) 929-4227 fax

DRAWN BY: SDO JR. CHECKED BY: JDM  
JDM PROJECT #: 13-77