

C.S. # 1064

Hardcopy 13-6 # 16

also see notes in file

F. B. 72-6

Floyd F Kuzman  
CS 334  
Began at A.  
South

F/B #72, PG 6-10

1064

+21010  
3.169 2.955  
+60120  
1.233 1.225  
-7810  
2.233 2.215  
-15720  
3.663 3.533  
-20330  
4.985 4.667  
4.997 4.994

Sid  
South .010 W  
.014 W  
.022 W  
.034 W  
.050 W  
.067 W  
+20 Cr

20.026  
9.589  
Set 49.85  
070 W  
S1°08' E  
come off 10.10  
= 50.053  
40.053

+7540  
4.960 4.937  
+6120  
4.961 4.931  
+100  
4.545 4.476  
4.950 4.950  
1.170 1.170

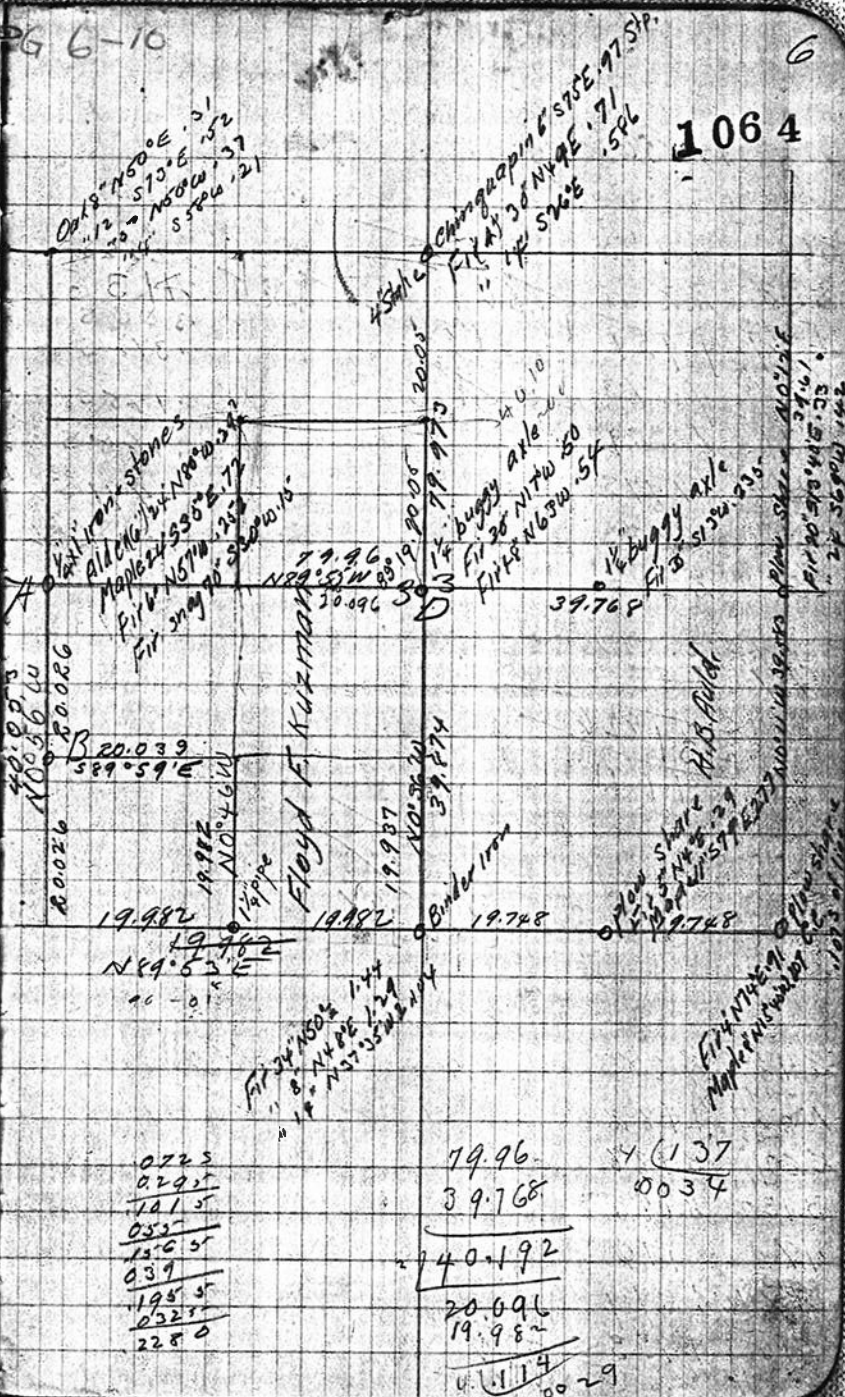
Correct 0°12' W  
138 W  
137 W

hit .137 E of Cor.  
Set 2" angle Iron

+10  
4.772 4.700  
-1520  
1.999 1.986  
3.675 3.587  
2.540 2.540  
2.120 2.103

89°58' L  
N89°0' E  
correct 50's  
= N89°53' E  
-1.404 RR  
+1.30 RR  
1.565  
1.955

2285



0225  
0295  
1015  
055  
1565  
039  
1955  
0225  
2280

19.96  
39.768  
140.192  
20.096  
19.982  
4.1114  
0029

1137  
0034

14,856 carry

<sup>+20°20'</sup>  
~~2.640~~ 2.473  
<sup>+11°30'</sup>  
~~2.286~~ 2.240  
<sup>+4°40'</sup>  
~~4.967~~ 4.951  
<sup>+4°10'</sup>  
~~4.793~~ 4.643  
<sup>+11°20'</sup>  
~~1.394~~ 1.389  
<sup>+11°20'</sup>  
~~1.473~~ 1.473  
<sup>-6°45'</sup>  
~~2.060~~ 2.030  
<sup>-12°15'</sup>  
~~2.572~~ 2.513  
<sup>-15°10'</sup>  
~~3.467~~ 3.376  
~~39,826~~  
~~19,913~~  
~~39,826~~  
~~19,913~~  
~~39,963~~  
~~19,981~~

19,569  
~~19,483~~  
~~31,163~~  
~~1,413~~

sid. 266S  
~~2418E~~  
~~300S~~  
~~376S~~  
~~448SV~~  
~~468SV~~  
~~491SV~~  
~~522SV~~  
~~573S~~  
~~624S~~

~~228~~  
~~038~~  
~~266~~  
~~0545~~  
~~5005~~  
~~076~~  
~~3745~~  
~~0715~~  
~~4480~~  
~~0203~~  
~~4688~~  
~~0227~~  
~~4910~~  
~~0314~~  
~~5224~~  
~~0385~~  
~~5609~~  
~~012~~  
~~5729~~  
~~051~~  
~~624~~

<sup>3076</sup>  
~~1845~~  
<sup>27008</sup>  
~~13504~~  
<sup>27008</sup>  
~~3376~~

9828  
~~0245~~  
~~01214~~  
~~3982~~  
~~01540~~  
~~0°53'~~

Began at D  
 West on true  
 line - nearly

<sup>-110</sup>  
~~2.433~~ 2.388  
<sup>-190</sup>  
~~1.567~~ 1.482  
<sup>-6°</sup>  
~~2.201~~ 2.188  
<sup>-10</sup>  
~~3.130~~ 3.082  
~~470~~ 470  
<sup>-50</sup>  
~~2.290~~ 2.279  
<sup>-540</sup>  
~~1.470~~ 1.453  
~~13,042~~



13.042

$\begin{array}{r} 5.000 \\ 3.330 \\ 3.000 \\ 2.000 \\ 5.000 \\ 2.40 \\ 2.60 \\ .842 \\ 3.485 \end{array}$ 
 $\begin{array}{r} 4.708 \\ 3.222 \\ 3.000 \\ 1.990 \\ 5.000 \\ 2.376 \\ 2.593 \\ .842 \\ 3.418 \end{array}$

$\begin{array}{r} 20.972 \\ 20.096 \\ .876 \end{array}$

$\begin{array}{r} 19.216 \\ .876 \\ 20.092 \end{array}$

$\begin{array}{r} 2 \overline{) 40.192} \\ 20.096 \end{array}$

Back to B

$\begin{array}{r} .067 \\ 4.967 \\ 4.985 \\ 1.952 \\ 4.968 \\ 3.345 \end{array}$ 
 $\begin{array}{r} 4.967 \\ 4.985 \\ 1.946 \\ 4.887 \\ 3.246 \end{array}$

587°52'E

"

"

589°59'E

$\begin{array}{r} -060 \\ 20.098 \end{array}$

20.038

Set 1/4" pipe

$\begin{array}{r} 1.968 \\ 2.009 \\ 1.850 \\ 3.760 \\ 4.880 \\ 2.391 \\ 1.456 \end{array}$ 
 $\begin{array}{r} 2.009 \\ 4.769 \\ 3.760 \\ 4.877 \\ 2.386 \\ 1.444 \end{array}$

51°58'W

54°08'E

52°12'W

50°30'E

"

"

19.215

set  
 $\begin{array}{r} .229W \\ 2.76W \\ .274W \\ .078W \\ .055W \\ .044W \\ .037W \end{array}$

029W

026W

055W

000

027E

043E

1°12'E

3 22'E

20 58'W

0°16'N

"

"

$\begin{array}{r} .069E \\ 0.40W \\ .029E \\ 3.42E \\ .371E \\ .095W \\ .216E \end{array}$

$\begin{array}{r} .276E \\ 0.76W \\ 1.45W \\ .055E \\ 0.42E \\ .097E \\ 0.97W \\ 0.000 \end{array}$

$\begin{array}{r} 0.44W \\ 0.21E \\ 0.21W \\ 0.29W \\ .056W \\ 0.12E \\ .043W \\ 0.15W \\ .058W \\ 0.97E \\ 0.57W \end{array}$

$\begin{array}{r} 069E \\ 342E \\ 411E \\ 145W \\ 266E \\ 042E \\ 308 \\ 021 \end{array}$

$\begin{array}{r} 437 \\ 153 \\ 284 \end{array}$

$\begin{array}{r} .0366 \\ .1830 \end{array}$

should be 589°59'E - 20°07'E

$\begin{array}{r} 195 \\ 366 \\ 561 \\ 170 \\ 71 \end{array}$

$\begin{array}{r} 4.377 \\ 3.606 \\ 79.152 \end{array}$

$\begin{array}{r} 60.09 \\ .042 \\ .232 \\ .274 \\ .196 \\ .098 \\ 1.96W \end{array}$

$\begin{array}{r} 327 \\ 013 \\ .342 \\ .007 \\ 349 \\ 549 \\ 053E \\ 140B \end{array}$

19.245

-16° 10'  
770

739

~~9.984~~  
9.984

50°30'E

.053W of Cor

.034W

Set on NE cor of NW 1/4 of SW 1/4

+8° 20'  
4.950

4.897

N0°30'W

+7°  
1.40

1.390

"

+7° 30'  
3.537

3.448

"

#  
+12°  
R. 590

2.559

S0°19'E

+4°  
1.414

1.410

S1°21'W

-10° 20'  
3.710

3.648

50°30'W

+13°  
3.770

2.689

~~1735~~

Set 1/2 pipe

4.940

4.940

N89°53'E

1.961

1.958

N89°47'E

+11° 40'  
4.225

4.138

East

+5° 20'  
1.168

1.160

"

-8° 20'  
1.828

1.808

S89°43'E

+6° 10'  
4.727

4.085

East

+5° 30'  
1.928

1.908

4.089

19.997

20.7  
20.7  
20.7  
20.7  
20.7  
20.7  
20.7  
20.7  
20.7  
20.7

20.05  
7.35  
2.70

25.6  
25.6  
25.6  
25.6  
25.6  
25.6  
25.6  
25.6  
25.6  
25.6

20.7  
20.7  
20.7  
20.7  
20.7  
20.7  
20.7  
20.7  
20.7  
20.7

25.6  
25.6  
25.6  
25.6  
25.6  
25.6  
25.6  
25.6  
25.6  
25.6

20.7  
20.7  
20.7  
20.7  
20.7  
20.7  
20.7  
20.7  
20.7  
20.7

Δ Fir 30" S16°E .38

.540 s of hub should be 564



# Survey for School lot

Began at pt.  $R. 223$  N of  
 plow share on S line  
 of sec 33 19.748 W of S.E. cor.  
 Sight on hub across Road  
 N

$106^{\circ} 23' R$   
 $574^{\circ} 13' E$

$-5.040$   
 $4.990$   $4.966$

$5.000$   $5.000$

$4.630$   $4.612$   $14.678$

$19^{\circ} 39' L$

$-4.0$   
 $R. 550$   $R. 543$

$734' R$

N.W. cor School lot

N.E. cor School lot

$2.021$   
 $2.321$   
 $2.519$   
 $2.717$   
 $2.915$   
 $3.113$   
 $3.311$   
 $3.509$   
 $3.707$   
 $3.905$

$106.23$   
 $N 0^{\circ} 30' W$   
 $105.47$   
 $574.13 E$

$R. 543$   
 $3932$   
 $5086$   
 $7629$   
 $228.27$   
 $7629$   
 $9999076$

$R. 543$   $1.00000$   
 $3.932$   $96.89$   
 $23710$   
 $22887$   
 $8230$   
 $7629$   
 $6010$

$36''$  Fir CS.R N70°E 1.830

CS.R Oak 11" N32W .845

$36''$  Fir CS.R NW .92 from cor

