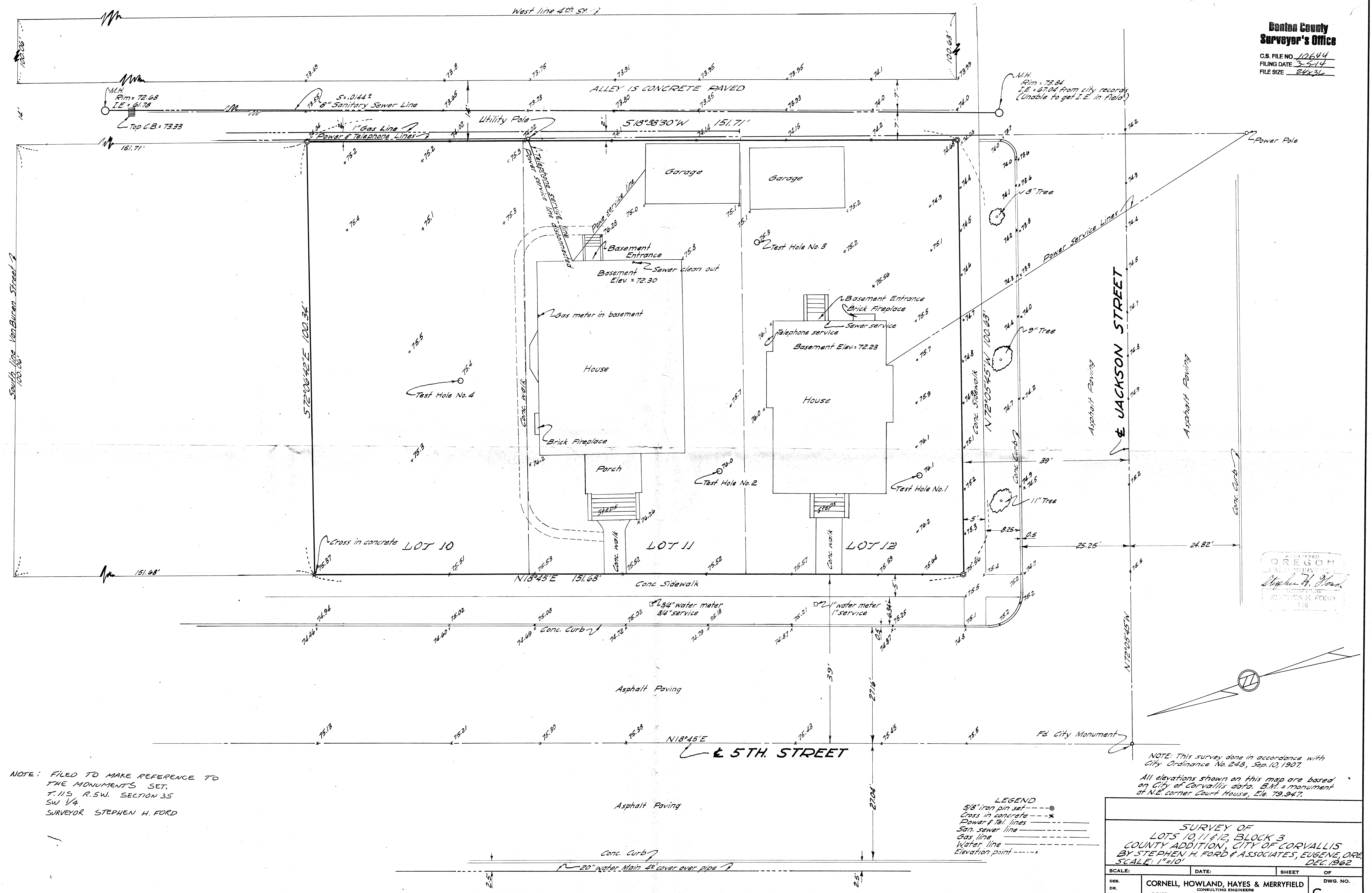


**Benton County
Surveyor's Office**

C.S. FILE NO. 10644
 FILING DATE 3-5-14
 FILE SIZE 24x36



NOTE: FILED TO MAKE REFERENCE TO THE MONUMENTS SET, T.11S R.5W. SECTION 35 SW 1/4. SURVEYOR STEPHEN H. FORD

NOTE: This survey done in accordance with City Ordinance No. 243, Sep. 10, 1907. All elevations shown on this map are based on City of Corvallis data. B.M. = monument at N.E. corner Court House, Elev. 79.947.

LEGEND
 5/8" iron pin set ---⊙---
 Cross in concrete ---x---
 Power & Tel. lines ---
 San. sewer line ---
 Gas line ---
 Water line ---
 Elevation point ---x---

**SURVEY OF
 LOTS 10, 11 & 12, BLOCK 3
 COUNTY ADDITION, CITY OF CORVALLIS
 BY STEPHEN H. FORD & ASSOCIATES, EUGENE, ORE.
 SCALE: 1"=10'**

SCALE:	DATE:	SHEET	OF
DER. DR. CK.	CORNELL, HOWLAND, HAYES & MERRYFIELD CONSULTING ENGINEERS BOISE CORVALLIS	SEATTLE	DWG. NO. C

CS 10644

12-13-14-17-62

Pelmer
Grayerbichl
Jul 14 68

1 _____ LINE DATE _____ PARTY _____

PROJECT _____

SHANNON 4104 L



191.4130
270° 39' 45"

9.		34.00	19° 32' 07"	Fd 9/8" P. in Inter. 4 th & Jackson	198.45 267° 07' 20" 129.52
8		308.50	18° 32' 07"	Set Conc. Nail & 4 th & 5' S. of S. of South Line of Block	287.52 270.39 45 557.32 07
7		38.50	18° 32' 07"	Set Conc. Nail & 4 th & N. Line of Block	340 218
6		270.50	287° 52' 22"	Fd 1" P. in Inter. 4 th & VABUREN also Fd PK. 0.11 W + .06 N	
5		2.00	192° 45'	Set Conc. Nail Inter of 5 th & VABUREN	
4		36.50	178° 45'	Fd 1" Pipe in M.C 2' South of Inter of 5 th & VABUREN	
3		308.34	192° 45'	Set Conc. Nail & 5 th & N Line of Block	
2		34.00		Set Conc. Nail & 5 th & S of S Line of Block	
1			N. 18° 35' E 198.45	Fd 1" Pipe in M.C, Inter N 5 th & Jackson	

PROJECT

SHANNON 4104 L

#12				15" (287°52'22")	Set Temp. Point NW Cor of Block 3	18°32'07" 269°22'08"
	39.00					289°54'45"
3			175°14'30" 269°07'15"			190
2				198°45'00"		107°54'15"
8						270°50'45"
	145.20			05" 287°54'28"		378°45'00"
						180
11.				08" 287°54'15"	Set Conc. Nail on ϕ of Alley as Paved + 5' S of 5 Line of Block	198°45' 89°09'09" 287°54'08"
	107.58					
#10				09" 287°34'15"	Set 60d Nail on W Prop Line + 5' S. of South Prop. Line	198°45' 269°07'15"
	39.00					467°52'15"
2			89°09'08" 178°18'15" 89°09'15"			190
3				19°45'		287
2,				118°10'2" (198°45') 170°45'		
12			181°41'31" 272°36'01"			
	291.89			107°54'15"		
			269°23'08" 178°44'15" 269°23'12"			
9						
8				18°32'00"		

LINE DATE PARTY

PROJECT

SHANNON 4104 L

LINE	DATE	PARTY			
12			151.68		
15			151.68	198°45'	NW COR LOT 10 BLK 3 + in conc.
1A			4.00	107°54'15"	set 60d in exp. joint
14A					set 5/8" PIN SW COR LOT 12, BLK 3
14			5.00	(198°45') 198°45'15"	
10				181°42' 270°51'	
11				(107°54'15")	
7			144.47	287°52'22"	
13			107.16	287°52'22"	Set Conc. Nail 4 of Alley as Paved & N Line of Block
12				287°52'22"	
3				287°52'22"	

187

LINE DATE PARTY

PROJECT

SHANNON 4104 L

										107 54 15
										270 46 33
										378 40 88
										150
										198 40 38
17						179 26 00				
13						269 73 00				
#13							18° 40' 38"			
					151.72		198° 40' 38"			
17										Set Conc Nail &
					151.71		198° 40' 38"			Alley
16										
11							198° 40' 38"			
16A										
							107° 54' 15"			
#16										Set Conc Nail & Alley
					5.00		198° 40' 38"			& S Line Block 3
						270 46 33				
11						181 32 45				
9						270 46 30				
							107° 54' 15"			

PROJECT

SHANNON 4104 L

17			
19	15/72	198°38'53"	
18			
16			
18A	7.00	107°51'15"	
18	5.00	198°38'53"	
16		270°44'38" 181°29'15" 270°44'30"	
17		107°51'15"	
13	0.10	107°52'15"	
12 FS		107°52'15"	
16			
10	0.11	287°51'15"	
11			
10 FS		287°51'15"	

				107° 51' 15"
				270 44 38
				378 38 53
				180
				178
			No Head	
			Set conc Nail &	
			Alley	
			Set 7/8" Pin SE Cor	
			Lot 12 BLK 3	
			Set Conc. Nail & Alley	
			+ 5 Line BLK 3	
			Set Conc. Nail on true	
			& Alley	
			Set Conc Nail on true	
			& Alley	

PROJECT

SHANNON 4104 L

	+	H1	-	Blc
B.M.	0.29			79.95
		80.24		
T.B.M.			4.72	75.52
			4.60	75.64
			4.65	75.59
			4.25	75.49
			5.25	74.84
			5.20	75.14
			4.7	75.54
			4.8	75.44
			5.0	75.24
			5.5	74.74
			3.5	75.24
			5.0	75.24
			4.9	75.34
			5.0	75.24
			5.1	75.14
			5.3	74.94
			5.4	74.84
			5.5	74.74
			5.6	74.64
			5.7	74.54
			5.8	74.44

281

NE Col. Court House

SW Cor Lot 12 BIK 3

PROJECT

SHANNON 4104 L

	+	HI	-	Elev
		88.24		
TBM			6.16	74.08
			6.2	74.0
			6.25	73.99
			6.40	73.84
			6.2	74.0
			6.6	73.6
			6.2	74.0
			6.5	73.7
			6.0	74.2
			4.7	76.5
			4.5	75.7
			4.3	75.9
			4.1	76.1
			4.1	76.1
			4.0	76.2
			6.1	74.1
			6.6	73.6
			5.9	74.3
			5.8	74.4
			6.0	74.2
			6.4	73.8
			5.9	74.3
			6.3	73.9

83

SW Cor. Lot 12-Block 3

MH North Rim

Test Hole #1

PROJECT

SHANNON 4104 L

188

		79.26							
			5.12	72.12					
			5.39	73.85					
			5.29	73.95					
			5.36	73.91					
			5.46	73.80					
			5.12	74.1					
TBM			2.98	76.28					
			6.96	72.30					
			5.24	74.02					
			5.53	73.73					
			5.49	73.75					
			5.46	72.86					
			5.59	73.65					
			5.21	74.02					
			5.22	74.02					
			5.69	73.55					
			5.57	73.69					
			5.93	73.33					
			6.58	72.68					
			17.48	61.78					

South wall of star

SE Rim
E.ner?

1090
 435
 17.7⁰

PROJECT

SHANNON 4104 L

LINE	DATE	PARTY		
				76.28
4.31	80.59			
			\$.50	75.1 ^{.09}
5.6				75.0 ^{.90}
5.3				75.3 ^{.29}
5.4				75.2 ^{.19}
5.4				75.2 ^{.17}
5.2				75.2 ^{.39}
5.5				75.1 ^{.09}
5.3				75.3 ^{.79}
5.2				75.3 ^{.39}
TBM				75.56
4.99	80.55			
5.3				75.3 ^{.05}
5.5				75.1 ^{.05}
5.4				75.2 ^{.15}
5.7				74.9 ^{.85}
5.5				75.1 ^{.55}
5.2				75.1 ^{.35}
8.32				72.23
4.5				76.1 ^{.05}
4.8				75.8 ^{.75}
4.6				75.8 ^{.75}
1				

PROJECT

SHANNON 4104 L

LINE	DATE	PARTY		
			80.55	.65
			4.9	74.7
			4.6	76.0
7BM				75.56
	4.77		80.33	
			4.8	75.53
			5.1	75.21
			5.08	75.25
			5.16	74.87
			4.87	73.15
			4.90	73.43
			5.16	74.57
			5.17	73.21
			4.76	75.57
			4.81	75.52
			5.15	73.18
			5.54	74.79
			4.93	73.90
			4.95	76.39
			5.61	74.72
			5.21	75.02
			4.81	73.52
			4.17	76.16
			4.48	76.76

PROJECT

SHANNON 4104 L

28

80,33

4.81 75.53

5.25 75.08

5.64 74.69

5.03 75.30

5.12 75.21

5.77 74.60

5.31 75.02

4.82 75.51

4.96 75.37

5.39 74.94

5.37 74.46

5.20 75.17

5.0 75.37

4.8 75.57

PROJECT

SHANNON 4104 L

