

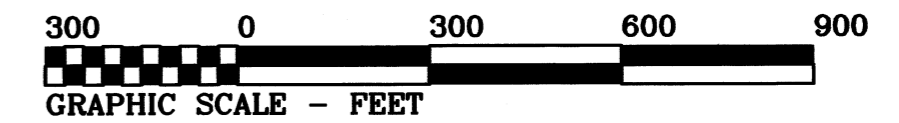
**Benton County
Surveyor's Office**

C.S. FILE NO. 10647
 FILING DATE 3-20-14
 SIZE 13x24

**RECORD OF SURVEY
 FOR
 WEYERHAEUSER COMPANY**

IN THE
 SW 1/4 SECTION 32
 T 13 S, R 8 W, W.M.
 BENTON COUNTY, OREGON

MARCH 10, 2014



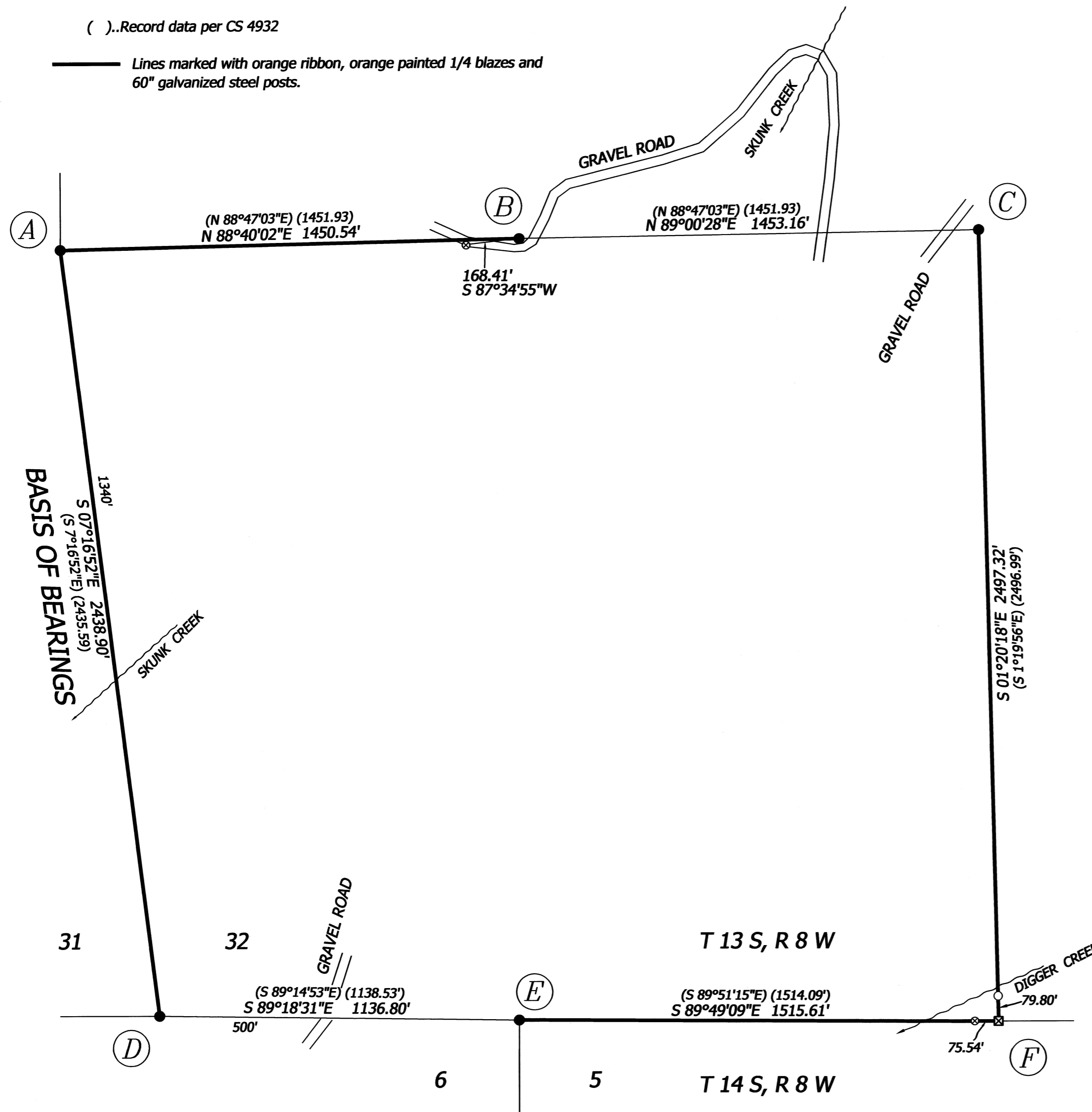
LEGEND

-Found Monument as noted, See Corner Data.
 OSBF = Oregon State Board of Forestry
 BLM = Bureau of Land Management
- ⊠Set Monument: 5/8 " x 10" rebar with 2" aluminum cap
 stamped "NORTHSTAR SURVEYING T13S R8W 1/4 S32"
-Set Monument: 5/8 " x 30" rebar with red plastic cap stamped
 "NORTHSTAR SURVEYING".
- ⊙Set Monument: 1/2 " x 24" rebar with yellow plastic cap stamped
 "N.STAR".
- ()...Record data per CS 4932

— Lines marked with orange ribbon, orange painted 1/4 blazes and
 60" galvanized steel posts.

NARRATIVE

The purpose of this survey was to mark my client's property boundaries as shown. In 1968, CS 4932 subdivided this Section 32. This work was done with a "Transit and Chain" as stated in the title of this map. The procedure used on this map was proper and the accuracy I find to be acceptable considering the tools and terrain. I accepted all of the monuments found as the corner positions as named in my Corner Data. I reset the South 1/4 corner of Section 32 by distance-distance intersection from the center of the 2 found bearing trees per CS 4932.



REGISTERED
 PROFESSIONAL
 LAND SURVEYOR

OREGON
 JULY 26, 1988
 ROBERT ALAN COOK
 2336
 RENEWS: 12/31/2015

NORTHSTAR SURVEYING, INC.
 720 N.W. 4th Street
 Corvallis, Oregon 97330
 Phone: 541-757-9050

CORNER DATA

- (A) 1/4 CORNER SECTIONS 31 AND 32
 Found 1960 BLM brass cap up 6" on a ridge top about 300' south of a gravel road.
 24" D. Fir snag S 84°W 16.5 ft. healed face, tag and paint.
- (B) CENTER WEST 1/16 CORNER SECTION 32
 Found 1968 OSBF brass cap per CS 4932 up 2" about 50' north of road.
 30" D. Fir stump S 65°W 18.9 ft. paint and healed face.
 1/2 " rod with yellow cap "N.STAR" S 87°34'55"W 168.41 ft.
- (C) CENTER 1/4 SECTION 32
 Found 1968 OSBF brass cap per CS 4932 down 18" about 80' SE of road.
 30" D. Fir stump N 40°30'W 23.8 ft. scribing visible.
 40" D. Fir stump burnt S 49°30'E 15.3 ft.
- (D) CLOSING CORNER SECTIONS 31 AND 32
 Found 1960 BLM brass cap up 12" on west side of 24" Maple.
 48" D. Fir N 43°W 15.2 ft. healed face, tag and paint.
 60" D. Fir N 37°W 37.8 ft. healed face, tag and paint.
 36" Cedar stump N 32°E (N 37°E) 62.04 ft.
- (E) STANDARD CORNER SECTIONS 5 AND 6
 Found 1968 OSBF brass cap per CS 4932 down 2" on east slope.
 30" Cedar S 74°E 39.6 ft. healed face, tag and paint.
 40" Cedar S 24°30'W 71.3 ft.
- (F) 1/4 CORNER SECTION 32 ONLY
 Set pointed 5/8 " rod driven into sandstone with a 2" aluminum cap stamped "NORTHSTAR SURVEYING T13S R8W 1/4 S 32" on steep north slope flush with bedrock. Monument set by distance-distance intersection from the found bearing trees per CS 4932.
 BT's found:
 30" Alder N 87°40'E 98.3 ft. barkscribing visible.
 20" Alder N 10°40'W 28.6 ft. barkscribing visible.
 Set: 1/2 " x 24" rebar with yellow plastic cap stamped "N.STAR"
 N 89°49'09"W 75.54 ft.
 Set: 5/8 " x 30" rebar with red plastic cap stamped "NORTHSTAR SURVEYING"
 N 1°20'18"W 79.80 ft. on south bank of Digger Creek.