

C.S. # 1078

See notes in file

F.B. 84-53

Book 84

CITY & M

FIELD BOOK

361

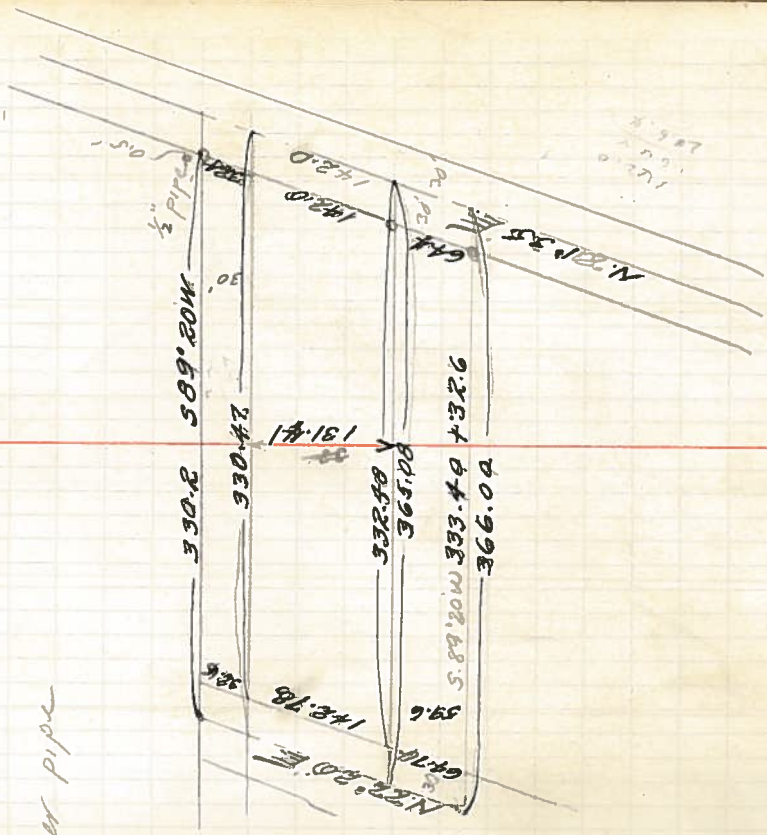
53

1078

Set. Flag 5' S. of  
 N.W. cor. Wm. F. Dixon C1.50  
 set on pt 5' S. of line on  
 n. side of Highway. Turn  
 interior angle  $67^{\circ}45'$   
 844.8 S.  $81^{\circ}35'W$   
 Set  $\frac{1}{2}$ " pipe 11' E of former pipe  
 Turn back  $67^{\circ}45'$   
 330.8 S.  $89^{\circ}50'W$

54

142.76  
 64.74  
 207.50



142.76  
 64.74  
 207.50