

LEGEND

- SET 5/8" x 30" I.R. W/ YPC STAMPED 'MSS ENGINEERING'
- FD MONUMENT AS NOTED, SEE FOUND MONUMENT REFERENCE TABLE
- CALCULATED POINT FROM RECORD DATA
- () DENOTES RECORD DATA, UNLESS OTHERWISE NOTED
- [] CALCULATED FROM RECORD DATA
- ⑤0 FOUND MONUMENT REFERENCE
- R1 SURVEY REFERENCE, SEE SURVEY REFERENCE TABLE
- C.S. COUNTY SURVEY
- FD FOUND
- FNC FENCE
- I.R. IRON ROD
- I.P. IRON PIPE
- YPC YELLOW PLASTIC CAP

MSS INC
215 NW 4TH STREET
CORVALLIS, OR 97330
(541) 753-1320
15075/BND.DWG

REGISTERED
PROFESSIONAL
LAND SURVEYOR

OREGON
MAY 26, 2015
PETER J. SEADERS
60183PLS

RENEWS: 06/30/18

C.S. 10829
RECORD OF SURVEY
FOR
JAMES FOLTS
LOCATED IN
SW1/4 NE1/4 SEC 27, T11S, R5W, W.M.
CITY OF CORVALLIS
BENTON COUNTY, OREGON
JULY 29, 2015

FOUND MONUMENT REFERENCE:

- ⑤0 FD 5/8" I.R. (NO CAP), R2, HELD
- ⑤1 FD 5/8" I.R. (NO CAP), R1, HELD
- ⑤2 FD 5/8" I.R. (NO CAP), R2, HELD
- ⑤3 FD 3/4" I.P. (I.D.), R1 (SEE NARRATIVE), HELD
- ⑤4 FD 5/8" I.R. (NO CAP), R1, HELD
- ⑤5 FD 1/2" I.R. (NO CAP), HELD

SURVEY REFERENCE:

- R1 HARMAN'S SEVENTH ADDITION
- R2 DIXIE-DALE ADDITION

Benton County
Surveyor's Office

C.S. FILE NO. 10829
FILING DATE 6-1-17
FILE SIZE 18x24

SURVEY NARRATIVE

PURPOSE:

The purpose of this survey was to monument the corners of Lot 18 of Harman's 7th Addition subdivision.

BASIS OF BEARINGS:

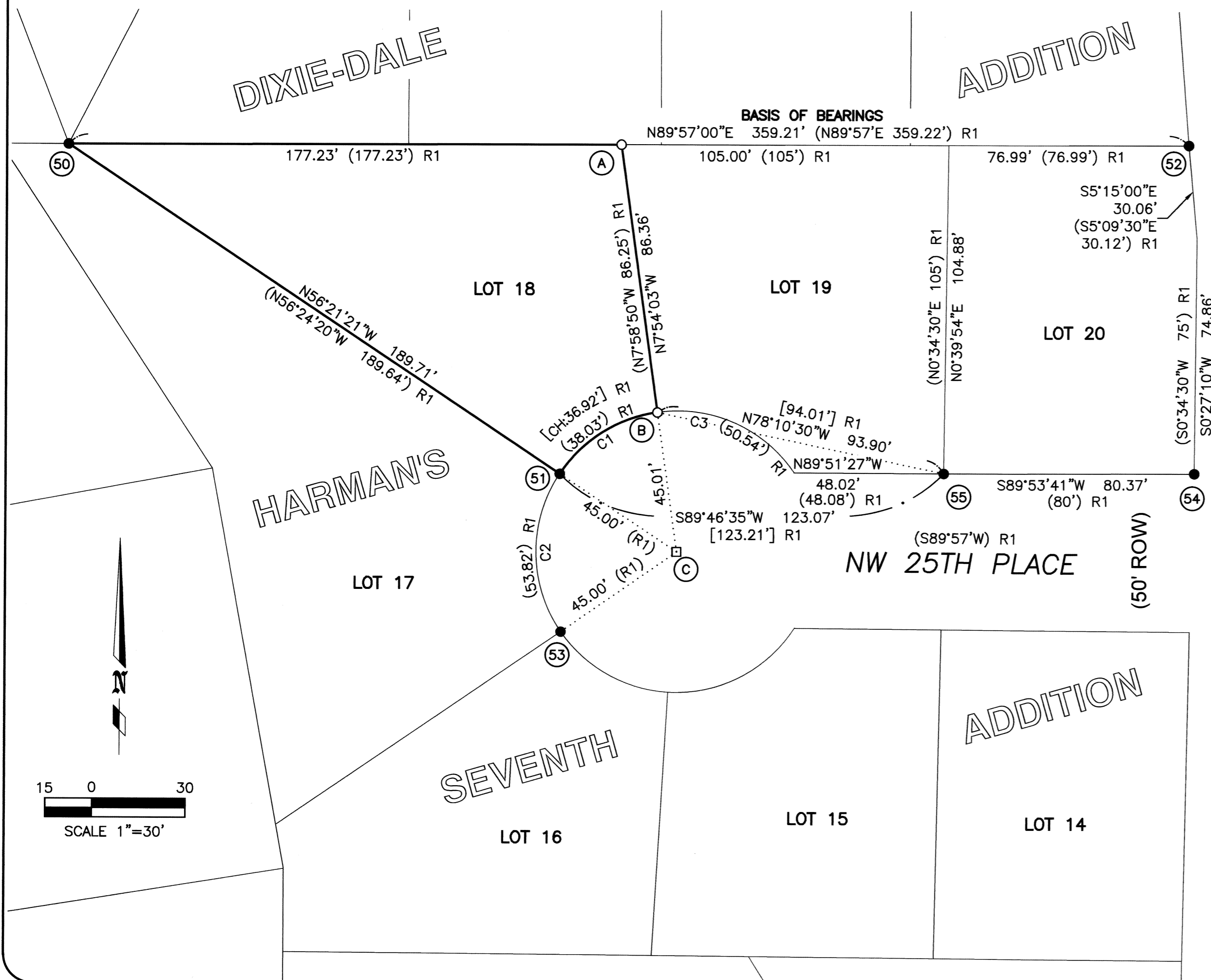
The basis of bearings for the survey was held based on points (50) and (52) as shown on the original Harman's 7th Addition Subdivision Plat.

BOUNDARY DETERMINATION:

I searched for but could not find the monuments at the northwest corner of Lot 20 and at the northeast corner of Lot 18. I determined the position of Point A at the northeast corner of Lot 18 based on proportionment of the distances on the original plat. The West line of Lot 18 was determined by found monuments (50) and (51). I found the original monuments (55) in good condition at the southwest corner of Lot 20, but could not find the remaining monuments along the right-of-way between monument (55) and (51).

In order to determine the correct position of Point (B) at the southeast corner of Lot 18, I laid out the bearings and distances listed on the original plat for Lot 18, 19 and 20. The chord distance calculated from the curve length and radius for the south line of Lot 18 fit well with the East and West lines of the lot. There appears to be a misclosure on south line of Lot 19 based on the plat bearings and distances. I calculated the distance from (51) to (55) and used this distance to proportion the calculated chord distances based on the plat from points (51) to (B) and points (55) to (B). These proportioned distances were used for a distance-distance intersection to determine the location of the monument set at Point (B). This fit well with the calculated cul-de-sac center at Point (C) based on the position of the monuments at (51) and (53).

Note that monument (53) is indicated on the original plat to be either a 1/2" or 5/8" iron rod, but I found a 3/4" I.D. iron pipe. There is no record of the monument being reset, and it appears to fit well with record position. It is unclear whether this is an original monument that was incorrectly labeled or if it was reset without a record survey being filed. I accepted this monument although its position does not affect the boundary of Lot 18.



NW 25TH STREET

Curve Table

Curve #	Length	Radius	Delta	Chord Dir	Chord Len
C1	38.00'	45.00'	48°22'54"	S57°40'16"W	36.88'
C2	53.60'	45.00'	68°14'49"	S0°37'14"E	50.49'
C3	50.47'	45.00'	64°15'55"	N66°27'14"W	47.87'