

**NARRATIVE:**

**PURPOSE:**

THE PURPOSE OF THIS SURVEY IS TO COMPLETE AN APPROVED PROPERTY LINE ADJUST PER CITY OF ALBANY CASE FILE No. LA-8-17

**BOUNDARY DETERMINATION:**

FOUND MONUMENTS, SET MONUMENTS AND CALCULATED POINTS WERE HELD AS SHOWN ON THE MAP AND FURTHER DESCRIBED BELOW:

POINT "A-1" WAS SET ON THE LINE ESTABLISHED BY POINTS "A" AND "B" AT RECORD DISTANCE FROM POINT "A" PER C.S. 9173.

POINT "B-1" WAS CALCULATED ON THE PROJECTION OF THE LINE ESTABLISHED BY POINTS "A" AND "B" AT THE RECORD DISTANCE FROM POINT "B" PER C.S. 9173.

POINT "A-2" WAS CALCULATED AT RECORD BEARING AND DISTANCE FROM POINT "C-3" PER C.S. 9173.

POINT "A-3" WAS CALCULATED AT RECORD BEARING AND DISTANCE FROM POINT "A-4" PER C.S. 9173.

POINT "A-4" WAS CALCULATED AT RECORD BEARING AND DISTANCE FROM POINT "A-3" PER C.S. 9173

POINT "A-5" WAS CALCULATED ON THE LINE ESTABLISHED BY POINTS "A-3" AND "A-4" AT RECORD DISTANCE FROM POINT "A-3" PER DEED DOCUMENT 2006-411373

POINT "C-1" WAS CALCULATED AT RECORD BEARING AND DISTANCE FROM POINT "C" PER C.S. 9173

POINT "C-2" WAS CALCULATED AT RECORD BEARING AND DISTANCE FROM POINT "C-1" PER C.S. 9173

POINT "C-3" WAS CALCULATED AT INTERSECTION OF THE SOUTH RIGHT-OF-WAY OF EAST THORNTON LAKE DRIVE WITH THE LINE ESTABLISHED BY POINTS "C-2" AND "A-5"

C.S. 10911  
**PROPERTY LINE ADJUSTMENT**  
 FOR  
**DAN WATSON**

**Benton County**  
**Surveyor's Office**

C.S. FILE NO. 10911  
 FILING DATE 7-19-18  
 FILE SIZE 10x24

LOCATED IN  
**JOHN QUINN THORNTON D.L.C. No. 37**  
**SW 1/4 SEC. 31, T. 10 S., R. 3 W., W.M.**  
**NE 1/4 SEC. 1, T. 10 S., R. 4 W., W.M.**  
**CITY OF ALBANY, BENTON COUNTY, OREGON**

JUNE 26, 2018

CITY OF ALBANY CASE No. LA-08-17

**APPROVALS:**

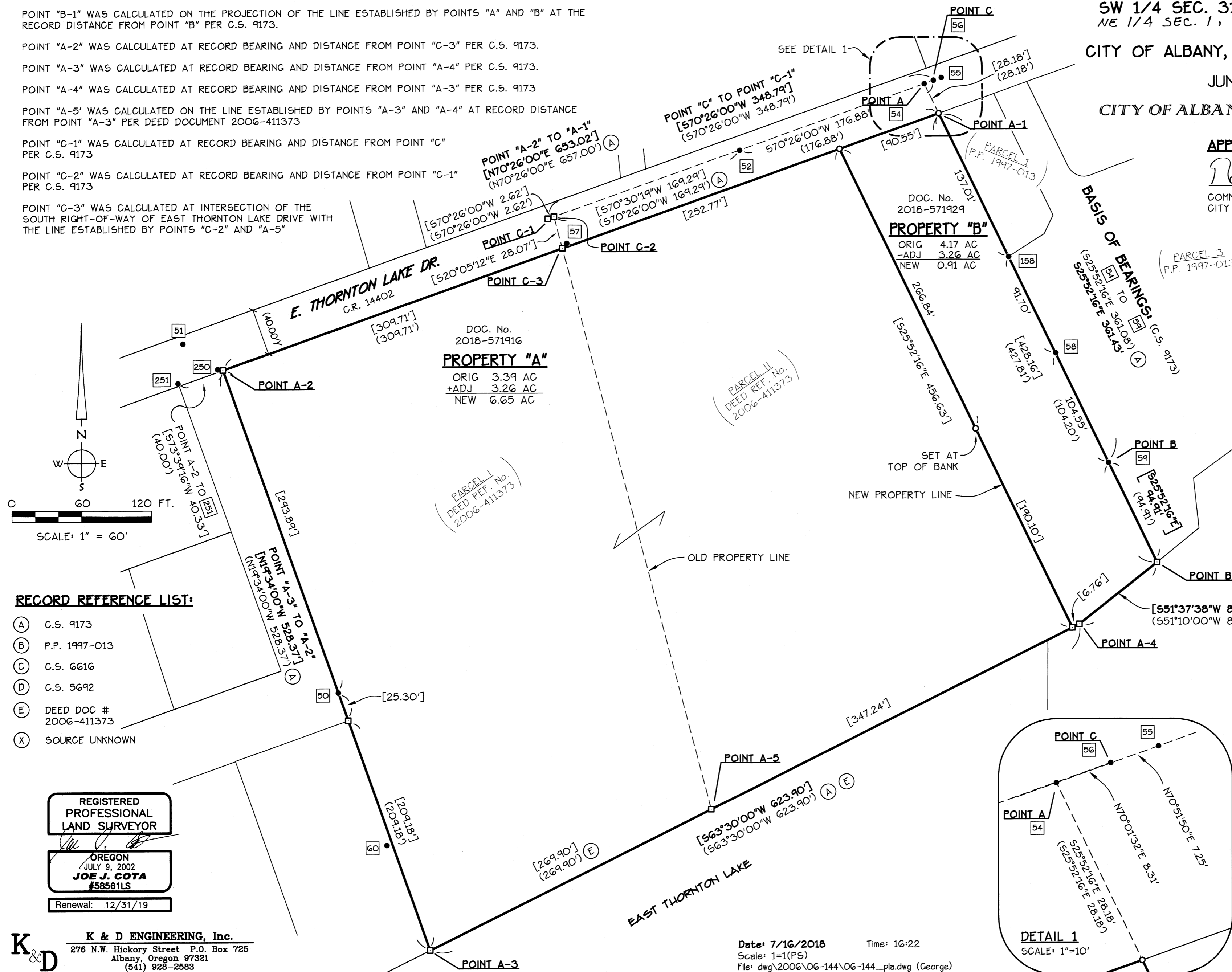
*Robert Richardson* 7-18-2018  
 COMMUNITY DEVELOPMENT DIRECTOR, DATE  
 CITY OF ALBANY

**FOUND MONUMENT LIST:**

- [50] FOUND 1/2" I.P. (X) ; ON LINE
- [51] FOUND 3" ALUMINUM CAP G.P.S. STATION 93649 IN STREET BOX; THAT IS N56°44'13"W 41.15' FROM POINT "A-2"
- [52] FOUND 1/2" SQUARE PIN (X) ; ALSO FOUND IN C.S. 9173
- [54] POINT "A" FOUND 5/8" I.R. (A) W/YPC STAMPED "LS 501"
- [55] FOUND 5/8" I.R. (A) W/YPC STAMPED "LS 501"
- [56] POINT "C" FOUND 1-1/4" I.P. (X)
- [57] FOUND 3/4" I.P. (X) ; THAT IS N46°39'42"E 1.04' OF CALCULATED CORNER
- [58] FOUND 5/8" I.R. (A) W/YPC STAMPED "LS 501"; ON LINE
- [59] POINT "B" FOUND 5/8" I.R. SHOWN AS FOUND ON (A)
- [60] FOUND 1/2" I.P. (X) WESTERLY 4.76' OF PROPERTY LINE; THAT IS N22°21'33"W 97.66' FROM POINT "A-3"
- [158] FOUND 5/8" I.R. (B) W/YPC STAMPED "LS 501"; SOUTHWEST CORNER OF PARCEL 1 OF P.P. 1997-013
- [250] FOUND 5/8" I.R. (C) ; THAT IS N81°06'41"W 4.48' OF POINT "A-2"
- [251] FOUND 1/2" I.R. (D)

**LEGEND:**

- FOUND MONUMENT, AS NOTED; SEE "FOUND MONUMENT LIST"
- SET 5/8" X 30" ROD W/YPC MARKED: "K+D ENGR. LS 58561"
- CALCULATED POINT FROM RECORD DATA
- ( ) RECORD DATA PER C.S. 9173 UNLESS NOTED OTHERWISE
- [ ] CALCULATED DATA
- C.S. COUNTY SURVEY
- I.R. IRON ROD
- I.P. IRON PIPE (INSIDE DIAMETER)
- YPC YELLOW PLASTIC CAP
- P.P. PARTITION PLAT
- [50] FOUND MONUMENT REFERENCE; SEE "FOUND MONUMENT LIST"
- (A) RECORD SURVEY REFERENCE; SEE "RECORD REFERENCE LIST"



**RECORD REFERENCE LIST:**

- (A) C.S. 9173
- (B) P.P. 1997-013
- (C) C.S. 6616
- (D) C.S. 5692
- (E) DEED DOC # 2006-411373
- (X) SOURCE UNKNOWN

REGISTERED PROFESSIONAL LAND SURVEYOR  
 OREGON JULY 9, 2002  
**JOE J. COTA**  
 #58561LS  
 Renewal: 12/31/19

**K & D ENGINEERING, Inc.**  
 276 N.W. Hickory Street P.O. Box 725  
 Albany, Oregon 97321  
 (541) 928-2583

Date: 7/16/2018 Time: 16:22  
 Scale: 1"=1(P5)  
 File: dwg\2006\06-144\06-144\_pla.dwg (George)