

RECORD OF SURVEY

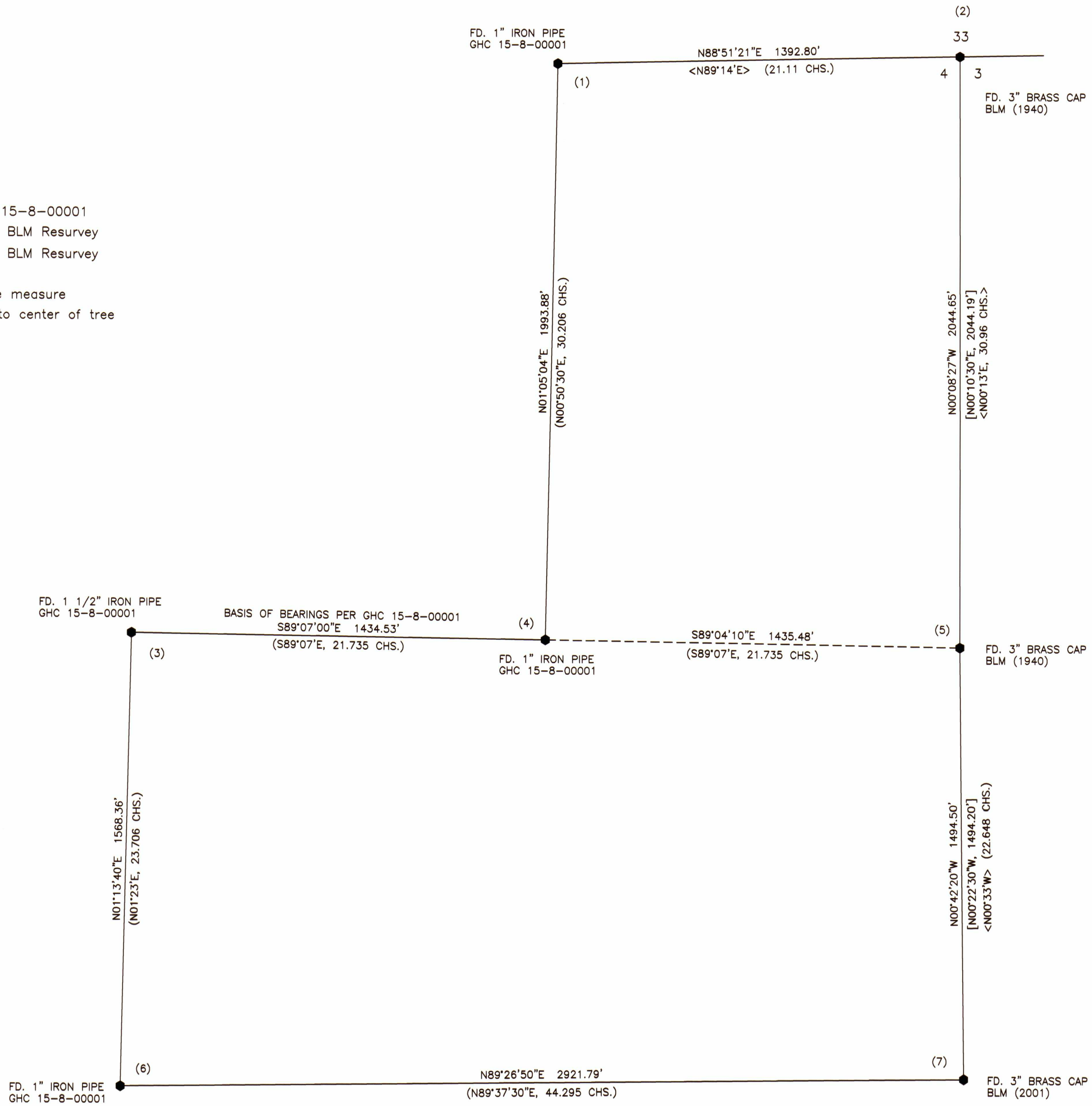
for FRERES LUMBER CO., INC.

in the E1/2 SECTION 4, T15S, R7W, W.M.
BENTON COUNTY, OREGON
JULY 16, 2018

Benton County
Surveyor's Office

C.S. FILE NO. 10919
FILING DATE 8-24-18
FILE SIZE 18x24

- Monuments found as noted
- () Data of record as per GHC 15-8-00001
- < > Data of record as per 1940 BLM Resurvey
- [] Data of record as per 2001 BLM Resurvey
- GHC Galloway Hard Copy
- Iron pipe diamters are inside measure
- BT distances measured are to center of tree



SURVEYED BY:
PETERSON & ASSOCIATES
32081 HENKLE WAY
PHILOMATH, OREGON 97370
PHONE: 541-602-0553

REGISTERED
PROFESSIONAL
LAND SURVEYOR

OREGON
JULY 15, 2003
BRIAN M. PETERSON
60065

RENEWAL: 12-31-18

RECORD OF SURVEY
for FRERES LUMBER CO., INC.
in the E1/2 SECTION 4, T15S, R7W, W.M.
BENTON COUNTY, OREGON
JULY 16, 2018

Benton County
Surveyor's Office

C.S. FILE NO. 10919
FILING DATE 8-24-18
FILE SIZE 18x24

NARRATIVE

The purpose of this survey is to mark the exterior boundary of Tax Lot 100 of Tax Map 15-7-4 and to set new bearing trees at corners as shown on this map.

Monuments found as per Galloway Hard Copy 15-8-00001, 1940 and 2001 BLM Resurveys were held as control for this survey.

CORNER NOTES

(1) E1/16 CORNER - NORTH LINE SECTION 4

Found 1" iron pipe as per GHC 15-8-00001

BT's found:

Rotted Hemlock Stub, (S29°E, 5.2') No marks visible
Rotted Hemlock Stub, (N65°W, 5.5') No marks visible

BT's set:

6" Hemlock, S45°E, 9.5 ft. Marked: "E1/16 S4 BT"
12" Hemlock, S71°W, 10.2 ft. Marked: "E1/16 S4 BT"

Corner lies on gentle Northeast slope.

(2) NORTHEAST CORNER SECTION 4

Found 3" BLM brass cap (1940)

BT's found:

60" Fir, (S87°E, 56.3 ft.) Healed face
20" Fir, (S61°W, 13.2 ft.) Healed face
14" Fir, (S38°E, 11.2 ft.) Healed face

BT's set:

24" Fir, N13°E, 11.5 ft. Marked: "X" "BT"

Corner lies on Southeast slope.

(3) C1/4 CORNER SECTION 4

Found 1 1/2" iron pipe as per GHC 15-8-00001

References found:

Rotted Hemlock Stub, (N12°E, 6.2 ft.) No marks visible
Rotted Hemlock Stub, (N74°W, 19.2 ft.) No marks visible
2' X 3' Rock, (S47°W, 3.2 ft.) To high point

BT's set:

8" Fir, N32°W, 8.0 ft. Marked: "C1/4 S4 BT"
12" Fir, S68°W, 9.0 ft. Marked: "C1/4 S4 BT"
8" Fir, S15°E, 27.4 ft. Marked: "C1/4 S4 BT"
8" Fir, N79°E, 11.0 ft. Marked: "C1/4 S4 BT"

Corner lies on steep Northeast slope, 150' West of creek.

SURVEYED BY:
PETERSON & ASSOCIATES
32081 HENKLE WAY
PHILOMATH, OREGON 97370
PHONE: 541-602-0553

REGISTERED
PROFESSIONAL
LAND SURVEYOR

OREGON
JULY 15, 2003
BRIAN M. PETERSON
60065

RENEWAL: 12-31-18

(4) CE1/16 CORNER SECTION 4

Found 1" iron pipe as per GHC 15-8-00001

BT's found:

Rotted Fir Stub, (S88°E, 3.2 ft.) No marks visible
Rotted Fir Stub, (N24°W, 6.1 ft.) No marks visible

BT's set:

16" Hemlock, N50°W, 3.5 ft. Marked: "CE1/16 S4 BT"
16" Fir, N35°E, 24.3 ft. Marked: "CE1/16 S4 BT"

Corner lies on Northeast slope, 20' East of bike trail.

(5) 1/4 CORNER SECTIONS 3 AND 4

Found 3" BLM brass cap (1940)

BT's found:

50" Fir Uproot, (N18°E, 60.1 ft.) No marks visible
Rotted Hemlock Stump, (S67°W, 8.6 ft.) No marks visible
48" Fir Stump, (S33°W, 33.0 ft.) Healed face
18" Hemlock, (S80 3/4°E, 20.6 ft.) Scribing visible
22" Hemlock, (N71°W, 29.0 ft.) Scribing visible

BT's set:

12" Hemlock, S59°W, 24.6 ft. Marked: "1/4 S4 BT"
22" Hemlock, N17°E, 35.6 ft. Marked: "1/4 S3 BT"

Corner lies on Northwest slope, 250' North of gravel road.

(6) CS1/16 CORNER SECTION 4

Found 1" iron pipe as per GHC 15-8-00001

BT's found:

30" Hemlock Snag, (S58°E, 7.3 ft.) Rotted face
32" Fir Stump, (S77°W, 37.7 ft.) Healed face
48" Fir Stump, (N11°W, 21.8 ft.) Healed face

BT's set:

12" Fir, S30°W, 9.9 ft. Marked: "CS1/16 S4 BT"
16" Hemlock, N65°W, 16.9 ft. Marked: "CS1/16 S4 BT"

Corner lies on steep Northwest slope, 300' West of road.

(7) S1/16 CORNER SECTIONS 3 AND 4

Found 3" BLM brass cap (2001)

BT's found:

32" Hemlock, (S06 1/2°W, 15.4 ft.) Sawed face
40" Hemlock, (N67°W, 37.3 ft.) Sawed face
20" Hemlock, (S23 1/2°E, 6.4 ft.) Scribing visible
12" Hemlock, (N73 1/2°W, 34.8 ft.) Scribing visible

Corner lies on Northeast slope.