

RECORD OF SURVEY

FOR MOUNTAIN WEST INVESTMENT CORP.
IN THE NE 1/4 SEC. 7, T. 12 S., R. 5 W., W.M.
CITY OF PHILOMATH, BENTON COUNTY, OREGON

BY:
MULTI/TECH ENGINEERING SERVICES, INC.
1155 13TH ST. S.E. SALEM, OREGON 97302
503-363-9227

**Benton County
Surveyor's Office**

CS FILE NO. 11025
CALC. DATE 11-16-20
FILE SIZE 18x24

NARRATIVE:
THE PURPOSE OF THIS SURVEY IS TO REPLACE MONUMENTS LOST DURING CONSTRUCTION OF AN APARTMENT COMPLEX. I PREVIOUSLY SURVEYED THIS PROPERTY IN COUNTY SURVEY 10943 AND RESET MONUMENTS AT THE SAME LOCATION AS ORIGINALLY FOUND USING ORIGINAL CONTROL. THE BASIS OF BEARING IS ALONG THE EAST LINE OF THE TRACT OF LAND DESCRIBED IN DOCUMENT 2013-504552.

MONUMENT TABLE:

- A. 4" x 12" x 24" STONE SCRIBED "12S 5W" HELD AS THE NORTHWEST CORNER OF THE N.P. NEWTON DLC NO. 72 PER CORNER RESTORATION 3546
- B. 1/2" IRON PIPE PER CS 1150
- C. 1" IRON PIPE PER CS 2936
- D. 3/4" IRON ROD PER CS 3316
- E. 5/8" IRON ROD SCRIBED "MULTI/TECH ENG" PER CS 10943

REFERENCE SURVEYS:

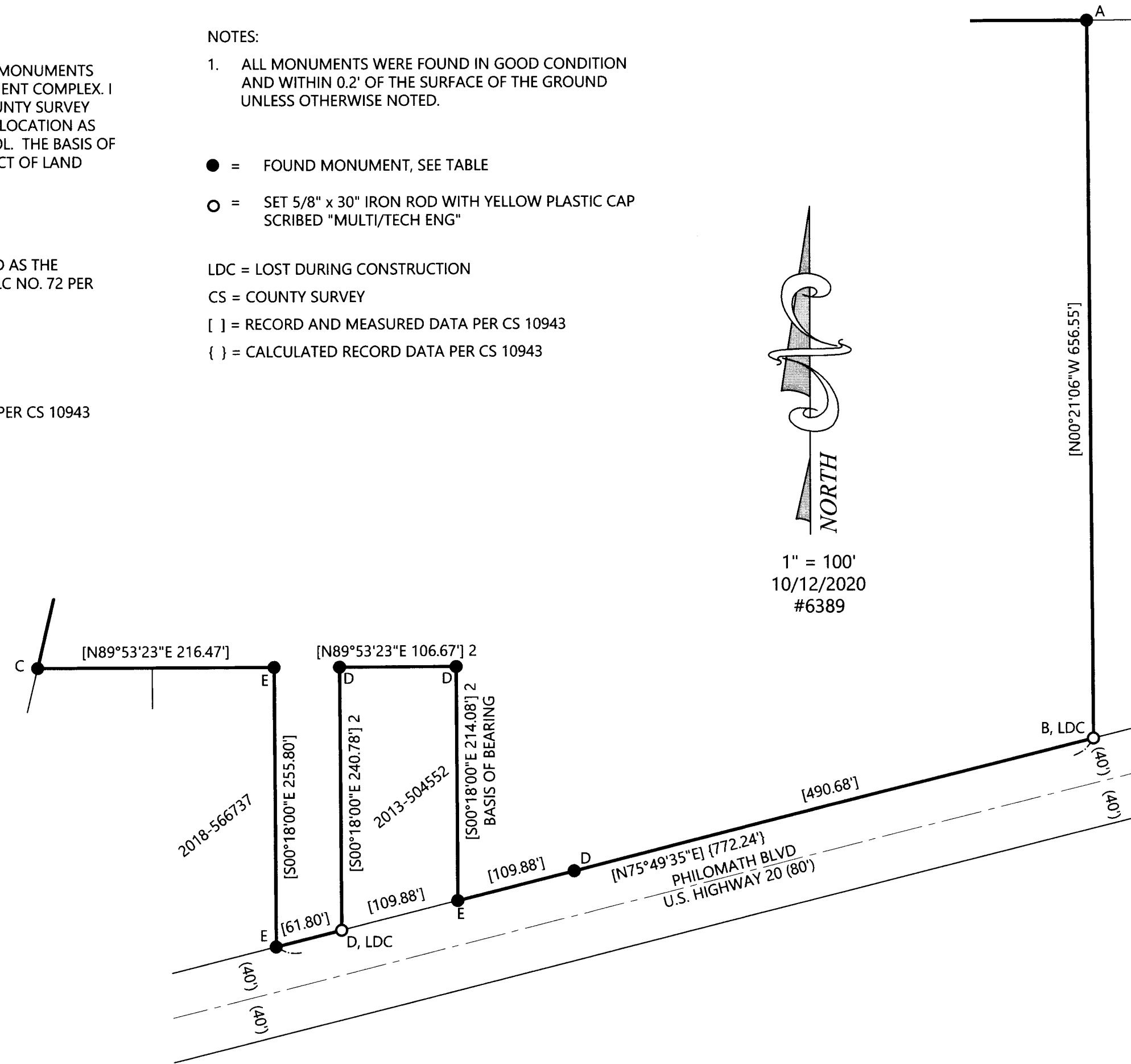
- 1. CS 1150
- 2. CS 2936
- 3. CS 3316
- 4. CS 3546
- 5. CS 10943

NOTES:

- ALL MONUMENTS WERE FOUND IN GOOD CONDITION AND WITHIN 0.2' OF THE SURFACE OF THE GROUND UNLESS OTHERWISE NOTED.

● = FOUND MONUMENT, SEE TABLE
○ = SET 5/8" x 30" IRON ROD WITH YELLOW PLASTIC CAP SCRIBED "MULTI/TECH ENG"

LDC = LOST DURING CONSTRUCTION
CS = COUNTY SURVEY
[] = RECORD AND MEASURED DATA PER CS 10943
{ } = CALCULATED RECORD DATA PER CS 10943



REGISTERED
PROFESSIONAL
LAND SURVEYOR

Robert D. Hamman

OREGON
JULY 13, 2004
ROBERT D. HAMMAN
64202LS

EXPIRES: 6-30-2021