

POINT COORDINATE TABLE

Point#	Description	Northing	Easting	Latitude (DMS)	Longitude (DMS)	Point#	Description	Northing	Easting	Latitude (DMS)	Longitude (DMS)
(A)1	5/8" REBAR	343444.77	7466986.92	N44°34'24.59"	W123°19'17.60"	(K)2	5/8" REBAR	344157.86	7466387.38	N44°34'31.42"	W123°19'26.22"
(A)2	5/8" REBAR	342896.65	7467446.41	N44°34'19.34"	W123°19'10.99"	(L)	3" BRASS CAP	345881.38	7467027.32	N44°34'48.65"	W123°19'18.22"
(A)3	5/8" REBAR	343061.27	7467307.72	N44°34'20.92"	W123°19'12.99"	(M)	3" BRASS CAP	345815.20	7468948.89	N44°34'48.66"	W123°18'51.65"
(A)4	5/8" REBAR	343827.37	7466665.13	N44°34'28.26"	W123°19'22.23"	(N)	3" BRASS CAP	342575.28	7468508.94	N44°34'16.53"	W123°18'56.17"
(B)1	5/8" REBAR	344273.76	7466278.84	N44°34'32.53"	W123°19'27.78"	5000	SET MONUMENT	342544.52	7468504.76	N44°34'16.23"	W123°18'56.21"
(B)2	5/8" REBAR	344235.41	7466318.03	N44°34'32.16"	W123°19'27.22"	5001	SET MONUMENT	342544.52	7468504.76	N44°34'16.23"	W123°18'56.21"
(B)3	5/8" REBAR	345886.23	7466381.82	N44°34'48.48"	W123°19'27.13"	1012	7" GREEN UPOST	345733.65	7466375.91	N44°34'46.97"	W123°19'27.14"
(C)1	5/8" REBAR	343092.35	7467443.76	N44°34'21.27"	W123°19'11.12"	1014	7" GREEN UPOST	345883.87	7466707.36	N44°34'48.57"	W123°19'22.64"
(C)2	5/8" REBAR	343069.96	7468160.09	N44°34'21.30"	W123°19'01.22"	1016	7" GREEN UPOST	345847.05	7468024.37	N44°34'48.66"	W123°19'04.43"
(C)3	5/8" REBAR	343008.07	7468160.70	N44°34'20.69"	W123°19'01.18"	1018	7" GREEN UPOST	345829.72	7468527.52	N44°34'48.66"	W123°18'57.48"
(C)4	5/8" REBAR	342996.92	7468485.44	N44°34'20.69"	W123°18'56.70"	1020	7" GREEN UPOST	345319.45	7468881.60	N44°34'43.74"	W123°18'52.34"
(D)	3/4" PIPE	342593.63	7468267.83	N44°34'16.63"	W123°18'59.51"	1022	7" GREEN UPOST	344824.15	7468814.38	N44°34'38.83"	W123°18'53.03"
(E)	1/2" PIPE	342560.80	7468109.30	N44°34'16.90"	W123°19'01.71"	1024	7" GREEN UPOST	344328.96	7468747.07	N44°34'33.92"	W123°18'53.72"
(F)	3/4" PIPE	342949.31	7467438.07	N44°34'19.86"	W123°19'11.13"	1028	7" GREEN UPOST	342842.28	7468545.13	N44°34'19.18"	W123°18'55.80"
(G)	1/2" PIPE	342713.53	7468446.35	N44°34'17.88"	W123°18'57.10"	1030	7" GREEN UPOST	343377.99	7468612.53	N44°34'24.10"	W123°18'55.10"
(H)	1" ROD	342560.80	7468426.27	N44°34'16.36"	W123°18'57.30"	1032	7" GREEN UPOST	343833.32	7468679.81	N44°34'29.01"	W123°18'54.41"
(I)	1 1/4" PIPE	342485.34	7468496.87	N44°34'15.64"	W123°18'56.29"	1034	7" GREEN UPOST	345861.56	7467603.57	N44°34'48.65"	W123°19'10.25"
(J)1	3/4" PIPE	342634.28	7467776.63	N44°34'16.86"	W123°19'06.31"	1036	7" GREEN UPOST	345872.91	7467271.86	N44°34'48.65"	W123°19'14.84"
(J)2	3/4" PIPE	342692.95	7467788.74	N44°34'17.45"	W123°19'06.17"	1038	7" GREEN UPOST	345234.59	7466356.62	N44°34'42.04"	W123°19'27.17"
(J)3	3/4" PIPE	342526.69	7468590.99	N44°34'16.08"	W123°18'55.01"	1040	7" GREEN UPOST	344735.20	7466337.29	N44°34'37.10"	W123°19'27.19"
(K)1	3/4" REBAR	344366.91	7466171.09	N44°34'33.41"	W123°19'29.31"	1042	7" GREEN UPOST	344254.59	7466318.79	N44°34'32.35"	W123°19'27.22"
						1056	7" GREEN UPOST	343080.55	7467792.93	N44°34'21.27"	W123°19'06.30"

THE COORDINATES ARE NAD 83, OREGON STATE PLANE NORTH ZONE 3601.

**Benton County
Surveyor's Office**
C.S. FILE NO. 11093
FILING DATE 6-14-22
FILE SIZE 18x24

RECORD OF SURVEY
for
**GREENBELT LAND TRUST
OAK CREEK PRESERVE**
in the
SE 1/4 OF SECTION 29,
& NE 1/4 OF SECTION 32
T 11 S, R 5 W, W.M.
BENTON COUNTY, OREGON

MAY 11, 2022

BASIS OF BEARINGS

THE BASIS OF BEARING FOR THIS SURVEY IS GEODETIC NORTH AS DERIVED BY USING TRIMBLE R12 GPS UNITS TIED INTO THE OREGON DEPARTMENT OF TRANSPORTATION (ODOT), OREGON REAL TIME NETWORK (ORGN). THE DATUM IS NAD 83, OREGON STATE PLANE NORTH 3601. THE BEARINGS ARE GEODETIC. HOWEVER, THE DISTANCES SHOWN HEREON ARE GROUND DISTANCES. TO CONVERT FROM GROUND TO GRID MULTIPLY BY 0.9999479. THE CONVERGENCE ANGLE FROM GRID TO TRUE NORTH IS N 01°59'54" E

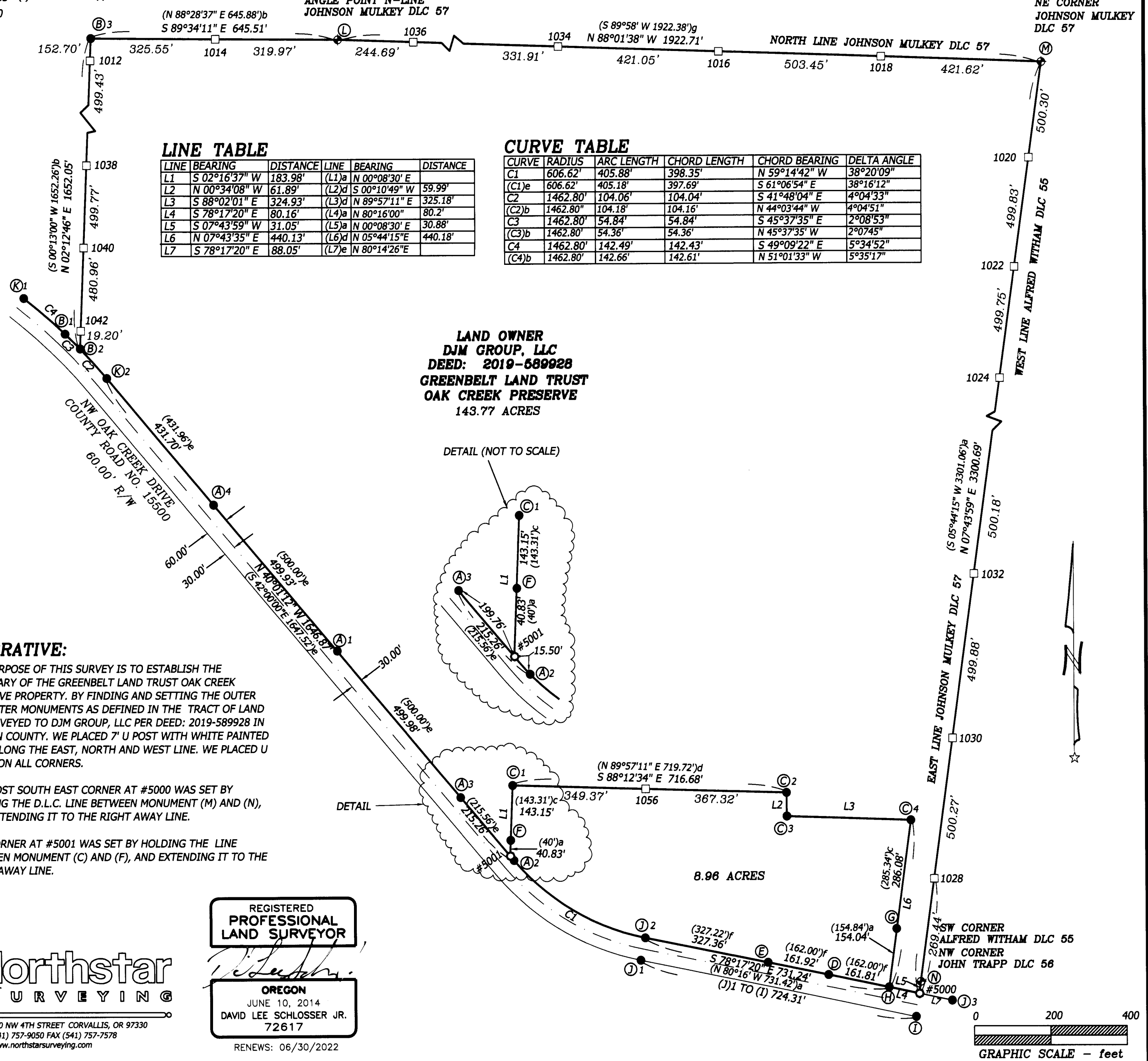
LEGEND

-FOUND MONUMENT AS NOTED IN MONUMENT TABLE
- ◆.....FOUND DLC MONUMENT AS NOTED IN MONUMENT TABLE
-SET MONUMENT- 5/8" X 30" REBAR WITH RED CAP STAMPED "NORTHSTAR SURVEYING"
-SET 7" GREEN UPOSTS WITH WHITE PAINTED TOPS
- Ⓐ.....MONUMENT CALL PER TABLE
- Ⓐ1.....POINT COORDINATE TABLE CALL
- DLC.....DONATION LAND CLAIM
- R/W.....RIGHT OF WAY
- ().....RECORD DATA FROM FROM REFERENCE BELOW:
- ()a.....CS 3396 ()b.....CS 9963 ()c.....CS 4347
- ()d.....CS 8463 ()e.....CS 7907 ()f.....CS 4032
- ()g.....CS 270

MONUMENT TABLE

- (A) ... 5/8" REBAR WITH YELLOW PLASTIC CAP STAMPED "NORTHSTAR PLS 1823 R/W", PER CS 7907
- (B) ... 5/8" REBAR WITH RED PLASTIC CAP STAMPED "NORTHSTAR PLS 1823", PER CS 9963
- (C) ... 5/8" REBAR WITH RED PLASTIC CAP STAMPED "NORTHSTAR PLS 1823", PER CS 8463
- (D) ... 3/4" PIPE, PER CS 4032
- (E) ... 1/2" PIPE, PER CS 4032
- (F) ... 3/4" PIPE, PER CS 3396
- (G) ... 1/2" PIPE, PER CS 3396
- (H) ... 1" ROD, PER CS 3396
- (I) ... 1 1/4" PIPE, PER CS 292
- (J) ... 3/4" PIPE, FOUND PER CS 7907, ORIGINAL ORIGIN UNKNOWN
- (K) ... 5/8" ROD, FOUND PER CS 7907, ORIGINAL ORIGIN UNKNOWN
- (L) ... 3 1/4" BRASS CAP, N-LINE JOHNSON MULKEY DLC 57 ANGLE POINT, PER BENTON COUNTY CORNER RESTORATION NO. 115857090
- (M) ... 3 1/4" BRASS CAP, NE CORNER OF JOHNSON MULKEY DLC 57, PER BENTON COUNTY CORNER RESTORATION NO. 115857010
- (N) ... 3 1/4" BRASS CAP, SW CORNER OF ALFRED WITHAM DLC 55, PER BENTON COUNTY CORNER RESTORATION NO. 115855070

**ANGLE POINT N-LINE
JOHNSON MULKEY DLC 57**



LINE TABLE

LINE	BEARING	DISTANCE	LINE	BEARING	DISTANCE
L1	S 02°16'37" W	183.98'	(L1)a	N 00°08'30" E	59.99'
L2	N 00°34'08" W	61.89'	(L2)d	S 00°10'49" W	325.18'
L3	S 88°02'01" E	324.93'	(L3)d	N 89°57'11" E	325.18'
L4	S 78°17'20" E	80.16'	(L4)a	N 80°16'00" E	80.2'
L5	S 07°43'59" W	31.05'	(L5)a	N 00°08'30" E	30.88'
L6	N 07°43'35" E	440.13'	(L6)d	N 05°44'15" E	440.18'
L7	S 78°17'20" E	88.05'	(L7)e	N 80°14'26" E	

CURVE TABLE

CURVE	RADIUS	ARC LENGTH	CHORD LENGTH	CHORD BEARING	DELTA ANGLE
C1	606.62'	405.88'	398.35'	N 59°14'42" W	38°20'09"
(C1)e	606.62'	405.18'	397.69'	S 61°06'54" E	38°16'12"
C2	1462.80'	104.06'	104.04'	S 41°48'04" E	4°04'33"
(C2)b	1462.80'	104.18'	104.16'	N 44°03'44" W	4°04'51"
C3	1462.80'	54.84'	54.84'	S 45°37'35" W	2°08'53"
(C3)b	1462.80'	54.36'	54.36'	N 45°37'35" W	2°07'45"
C4	1462.80'	142.49'	142.43'	S 49°09'22" E	5°34'52"
(C4)b	1462.80'	142.66'	142.61'	N 51°01'33" W	5°35'17"

**LAND OWNER
DJM GROUP, LLC
DEED: 2019-689928
GREENBELT LAND TRUST
OAK CREEK PRESERVE
143.77 ACRES**

NARRATIVE:

THE PURPOSE OF THIS SURVEY IS TO ESTABLISH THE BOUNDARY OF THE GREENBELT LAND TRUST OAK CREEK PRESERVE PROPERTY. BY FINDING AND SETTING THE OUTER PERIMETER MONUMENTS AS DEFINED IN THE TRACT OF LAND AS CONVEYED TO DJM GROUP, LLC PER DEED: 2019-689928 IN BENTON COUNTY. WE PLACED 7" U POST WITH WHITE PAINTED TOPS ALONG THE EAST, NORTH AND WEST LINE. WE PLACED U POSTS ON ALL CORNERS.

THE MOST SOUTH EAST CORNER AT #5000 WAS SET BY HOLDING THE D.L.C. LINE BETWEEN MONUMENT (M) AND (N), AND EXTENDING IT TO THE RIGHT AWAY LINE.

THE CORNER AT #5001 WAS SET BY HOLDING THE LINE BETWEEN MONUMENT (C) AND (F), AND EXTENDING IT TO THE RIGHT AWAY LINE.

**REGISTERED
PROFESSIONAL
LAND SURVEYOR**
David Lee Schlosser Jr.
OREGON
JUNE 10, 2014
DAVID LEE SCHLOSSER JR.
72617
RENEWS: 06/30/2022

**Northstar
SURVEYING**
720 NW 4TH STREET CORVALLIS, OR 97330
(541) 757-9050 FAX (541) 757-7578
www.northstarsurveying.com

