

PROPERTY LINE ADJUSTMENT
for
JOSEPH AND KATHRYN FRAZEY
&
MICHAEL SAYER
in the
SE 1/4 OF SECTION 24, & NE 1/4 OF SECTION 25
TOWNSHIP 11 SOUTH, RANGE 5 WEST
WILLAMETTE MERIDIAN,
CITY OF CORVALLIS,
BENTON COUNTY, OREGON

AUGUST 9, 2023

NARRATIVE

THE PURPOSE OF THIS SURVEY IS TO ADJUST THE PROPERTY LINES PER THE CLIENTS REQUEST. THE RESULTANT PROPERTIES HAVE BEEN APPROVED AND CONFORM WITH THE BENTON COUNTY COMMUNITY DEVELOPMENT DEPARTMENT CASE FILE LU-23-011.

THE MONUMENTS AND LOT CALLS ARE FROM BENTON COUNTY SURVEY 3810 AS SHOWN HEREON.

I FOUND AND HELD ALL OF THE MONUMENTS ON THE EAST LINE OF LOTS 10 AND 7 PER CS 3810. I USED A LINE OF BEST FIT TO CALCULATE THEM ALL ON A STRAIGHT LINE AND THEY FIT NICELY.

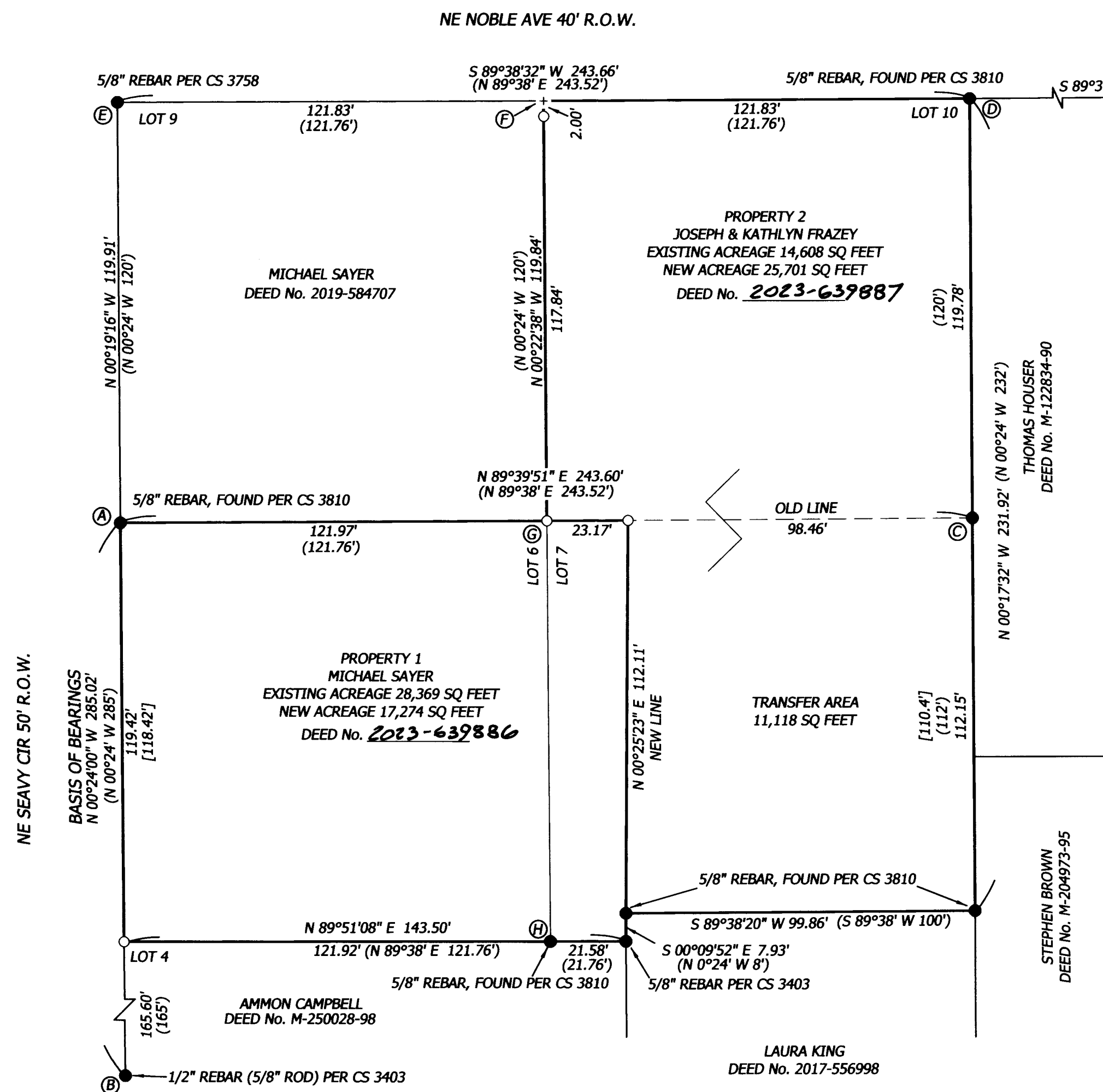
I FOUND AND HELD THE MONUMENTS ON THE SOUTH LINE OF LOT 7. THESE ALL FIT NICELY. I HELD THE TWO MOST SOUTHWESTERLY MONUMENTS OF LOT 7 AND EXTENDED THE LINE TO INTERSECT THE RIGHT OF WAY OF NE SEAVY CIRCLE.

I FOUND AND HELD THE NORTHWEST CORNER OF LOT 6 AT (A) AND THE SOUTHWEST CORNER OF LOT 4 AT (B) TO ESTABLISH THE EAST RIGHT-OF-WAY OF NE SEAVY CIRCLE.

I USED THE THE MONUMENT FOUND AT THE NORTHWEST CORNER OF LOT 6 AT (A) AND THE MONUMENT AT THE NORTHEAST CORNER OF LOT 7 AT (C) TO ESTABLISH THE NORTH LINE OF LOTS 6 AND 7.

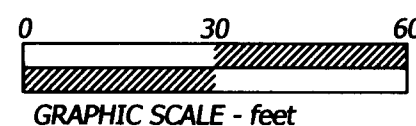
I FOUND AND HELD THE NORTHEAST CORNER OF LOT 10 AT (D) AND THE NORTHWEST CORNER OF LOT 9 AT (E). I SPLIT THE OVERALL DISTANCE BETWEEN THE TWO LOTS TO CREATE THE CALCULATED POSITION AT THE NORTHWEST CORNER OF LOT 10 AT (F). THE TRUE CORNER AT (F) FALLS IN A STUMP THEREFORE WE SET A 2' TO THE SOUTH ON LINE TO (G).

I HELD THE LINE BETWEEN THE SOUTHWEST CORNER OF LOT 7 AT (H) WITH THE CALCULATED CORNER AT (F), TOGETHER WITH THE LINE BETWEEN (A) AND (C) TO CREATE THE INTERSECTION AT (G), BEING THE COMMON CORNER OF LOTS 6,7,9 AND 10.



LEGEND

-FOUND MONUMENT AS NOTED
-SET 5/8" REBAR WITH RED PLASTIC CAP, STAMPED "NORTHSTAR SURVEYING"
- ()....RECORD DATA PER CS 3810
- []....RECORD DATA PER DEED No. 2021-613418
- +COMPUTED POSITION (NOTHING SET OR FOUND)
- Ⓐ - ⓓCORNER MONUMENT CALLS FOR NARRATIVE



David Lee Schlosser Jr. 9/29/2023
BENTON COUNTY PLANNING OFFICIAL DATE
PLANNING FILE No. LU-23-011

REGISTERED
PROFESSIONAL
LAND SURVEYOR

David Lee Schlosser Jr.
OREGON
JUNE 10, 2014
DAVID LEE SCHLOSSER JR.
72617

RENEWS: 06/30/2024

Northstar
SURVEYING
720 NW 4TH STREET CORVALLIS, OR 97330
(541) 757-9050 FAX (541) 757-7578
www.northstarsurveying.com
NSTAR JOB# 21168 FRAZEY