

Book #16

WYVH
WYVH BOOK
1963

50

11154

11154 Reest

1419 Road #338

Beginning at ¹¹¹⁹ 1413
 Set 1/4" pipe brick bats Point state
 Ash 8 N. 6° 45' E. 287 chs. sld.
 Pine 24" S. 80° 30' E. 287 " "
 Oak 30" S. 53° 30' W. 310 " "
 Pine 18" N. 68° 30' W. 230 " "
 South 0' 8,000 +10-1

0' 8,000 +12-15
 0' 8,000 +675-0
 +1.5' 8,000 +15'
 +1.5' 8,000 +20+10
 +3.0' 8,000 -1.95
 +3.0' 8,000 +10+7.0

1419 Reest

Set 3/4" pipe oak stamp 30 S. 60° W. 473
 Oak 50" S. 9° 30' E. 10,104 1/2
 " 18" S. 41° 5' W. 6,657 "
 S. 54' E. 8,656 1/2
 11,524

Beest 76.21

S. 20° 29' W. +8'
 S. 3° 36' E. -6'
 S. 54' E. -1.3'

14,977
 12,000
 103
 8,656
 11,524
 20,180
 8,000
 2,000
 4,214
 2 39,904
 19,977

8,000

11,524
 20,180
 8,000
 2,000
 4,214
 17.0

21 1413
20/24
Pine 20" N. 53° E.
Oak 9" East

Rest 11154
Pin-stump 50% 1/2
Orig. cor.
2.28 Me. St. N.
1.129 "

S. 3° 3' N. 0' 15747
- 2' 1776
+ 3.5' 2699

S. 20° 47' N. + 3.5' 2/4 pipe
5.8° 25' N. + 1.5' 5886 3/4 p.
S. 17' N. + 0' 18371 3/4 p.

S. 87° 15' N. 7.5' 4970 3/4 p.
107' 18" 11478 jumps

S. 12° 17' E. 0' 11102
+ 2' 20267 558-3

S. 30° 10' N. + 4.5' 25663 510 W.
Set 3/4 I pin

Map NE. cor. of C. 49. 514
Set 3/4 I pin orig. cor. Stump

S. Fork Oak 12° N. 88° 30' W. 1.449
Map to 18" 79° N. 2759

From S.E. cor. cl. #47
S. 1837 E. 7250 3/4 pipe
15750
- 400
4277

Suppose

11154

4.13 - 20
+ 0.7 7.3
+ 0.2 7.3
+ 0.2 7.3
+ 0.3 7.3
4.05 - 2.5

149
222

P.L.C. cor.
14.080
N. 13° 44' W.

20.282
- 0.25
20.267

11.102
20.367
31.369

23.200
372
22.528

4.997
4.21
4.755

2750

15747
1776
17723

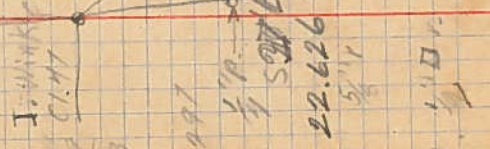
12.077
17.102
20.267
43.446

20.282
- 0.25
20.267

11.102
20.367
31.369

23.200
372
22.528

4.997
4.21
4.755



Benton County Surveyor's Office

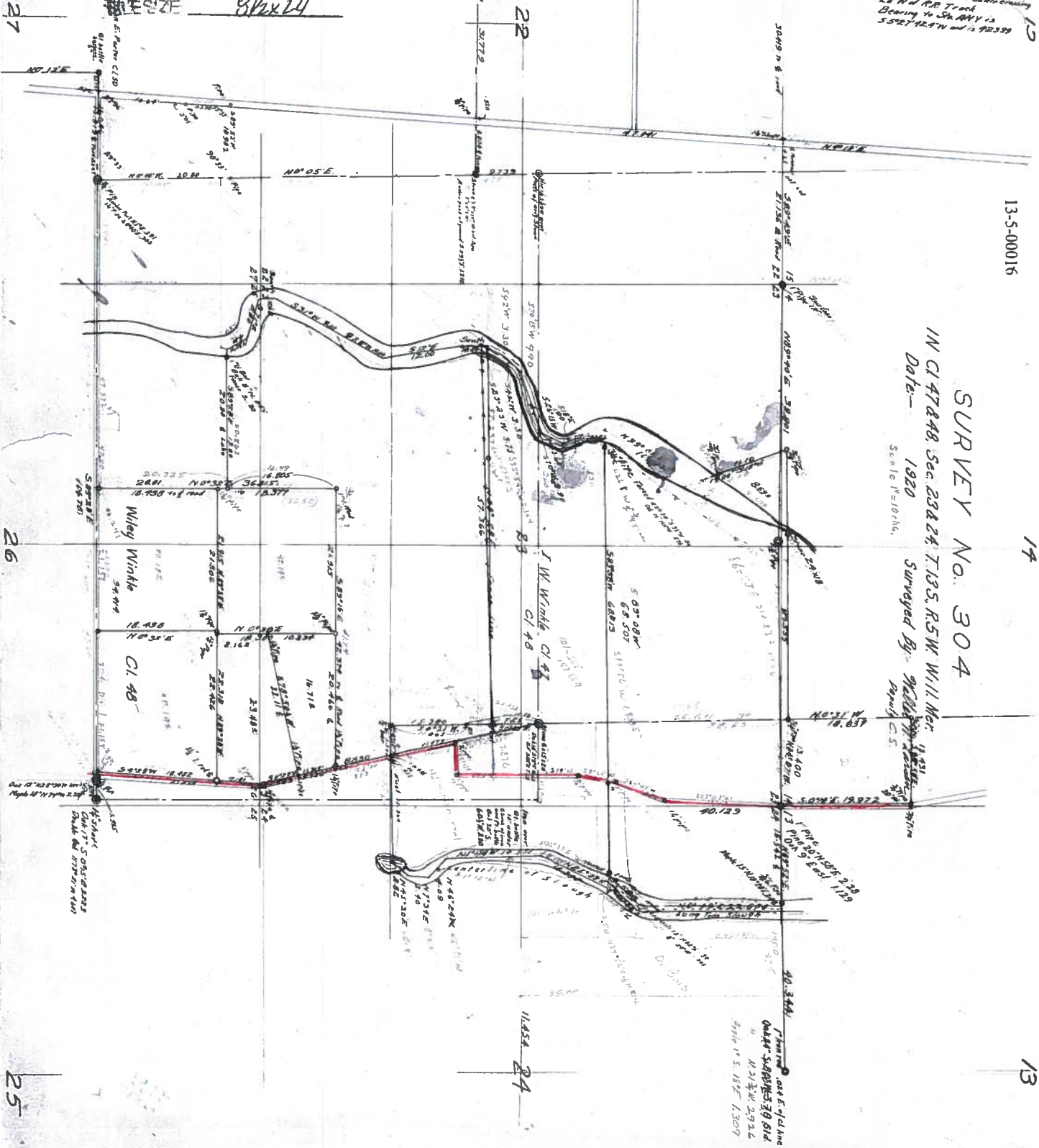
13-5
23,24

C.S. FILE NO. 11154
 FILING DATE 2-6-24
 SIZE 8 1/2 x 14

C.S. 304

U.S. Engr. 507, 1936 5th AMN
 102 ft. South of on 424 99 ft
 24' S. of Co. Road #350
 27' N. of road.

U.S. Engr. 507, 1936 5th AMN
 84 ft. South of on 424 99 ft
 28' N. of center of Co. Road crossing
 28' N. of R.R. Track
 Bearing to 5th AMN is
 S 52° 42' 47" W and 124.92339



13-5-00016

SURVEY No. 304
 IN C147848, Sec. 23&24, T.13S, R.5W, Will. Mer.
 Date - 1920
 Surveyed By - *W. H. ...*
 Scale 1" = 100 ft.

17

13

26

25

Plotted by J. E. ...
 Checked by J. E. ...
 Date 1-5-1925
 Scale 1" = 100 ft.