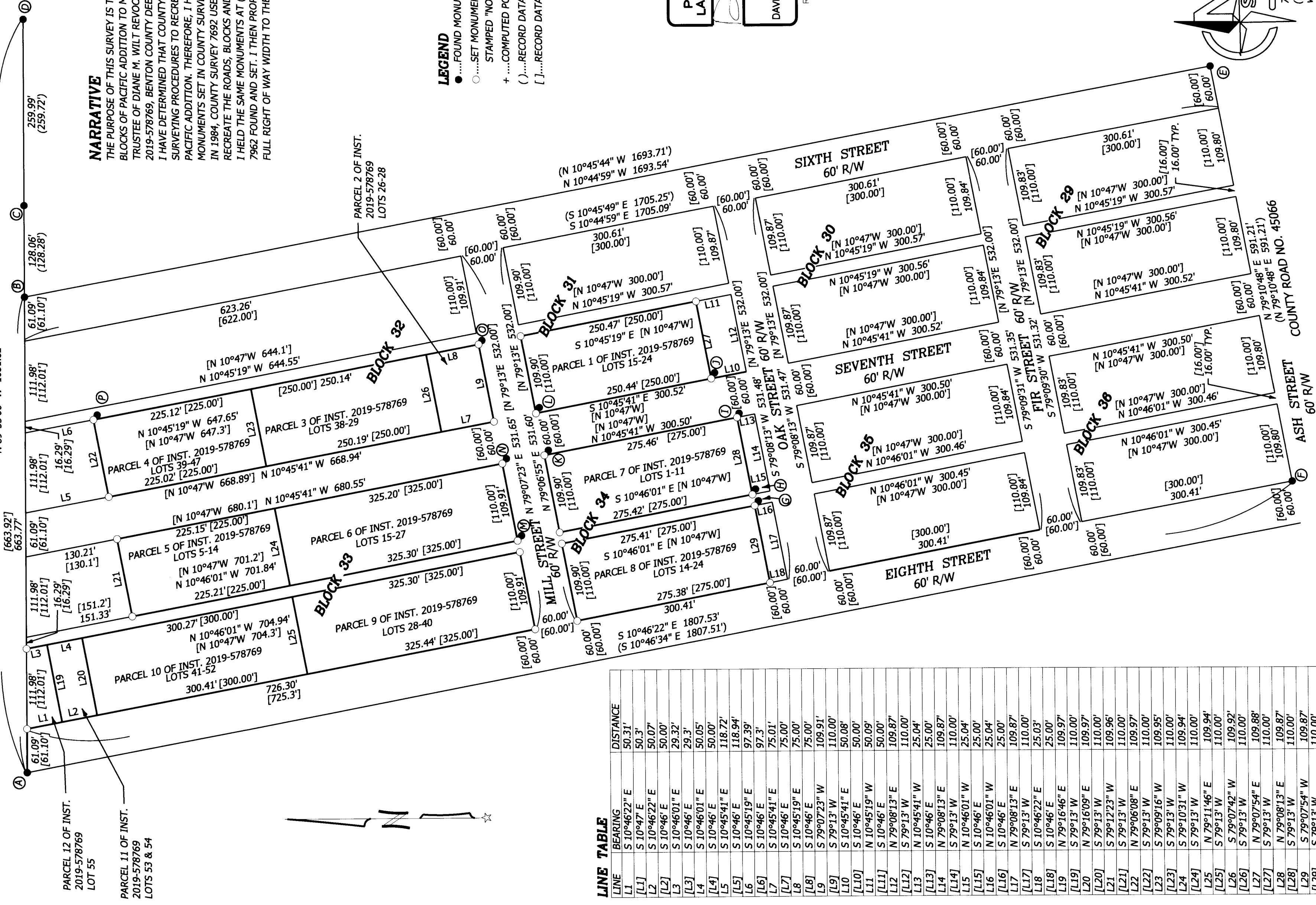


BENTON COUNTY  
 SURVEYOR'S OFFICE  
 C.S. FILE NO. 11206  
 FILING DATE 11-7-24  
 FILE SIZE 18x24

**RECORD OF SURVEY**  
 for  
**DIANE M. WILT REVOCABLE TRUST**  
 in the  
 SW 1/4 OF SECTION 28  
 T 14 S, R 5 W, W.M.  
 CITY OF MONROE,  
 BENTON COUNTY, OREGON  
 SEPTEMBER 18, 2024

- MONUMENT TABLE**
- Ⓐ ...FOUND 3/4" IRON ROD PER CS G14500029
  - Ⓑ ...FOUND 5/8" REBAR WITH ILLIGIBLE YELLOW CAP PER CS 7692
  - Ⓒ ...FOUND BOAT SPIKE. ORIGIN UNKNOWN
  - Ⓓ ...FOUND 2" INNER DIAMETER PILE PER CS 7158
  - Ⓔ ...FOUND 1-1/2" INNER DIAMETER PIPE PER CS 7148
  - Ⓕ ...FOUND 3/4" IRON ROD PER CS 4966
  - Ⓖ ...FOUND 5/8" IRON ROD S 44°10'08" E 1.55' FROM TRUE CORNER PER CS 4966
  - Ⓗ ...FOUND 5/8" IRON ROD S 44°34'23" E 1.51' FROM TRUE CORNER PER CS 4966
  - Ⓙ ...FOUND 5/8" IRON ROD S 33°58'04" E 1.86' FROM TRUE CORNER PER CS 4966
  - Ⓚ ...FOUND 5/8" IRON ROD S 31°53'57" E 2.03' FROM TRUE CORNER PER CS 4966
  - Ⓛ ...FOUND 5/8" IRON ROD S 35°08'25" E 2.19' FROM TRUE CORNER PER CS 4966
  - Ⓜ ...FOUND 5/8" IRON ROD S 28°55'26" E 2.14' FROM TRUE CORNER PER CS 4966
  - Ⓝ ...FOUND 5/8" IRON ROD S 37°10'55" E 1.78' FROM TRUE CORNER PER CS 4966
  - Ⓟ ...FOUND 5/8" IRON ROD S 36°54'24" E 2.07' FROM TRUE CORNER PER CS 4966
  - Ⓠ ...FOUND 5/8" IRON ROD S 34°28'31" E 2.54' FROM TRUE CORNER PER CS 4966
  - Ⓡ ...FOUND 5/8" IRON ROD S 24°59'33" E 3.21' FROM TRUE CORNER PER CS 4966

**BASIS OF BEARINGS**  
 (N 89°55'00" W 1051.82')  
 N 89°55'00" W 1051.82'



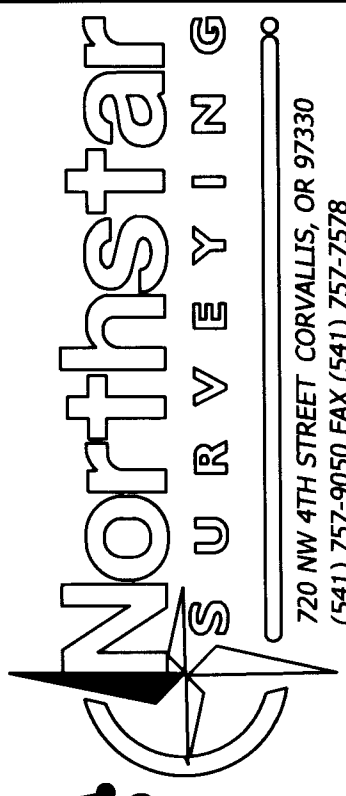
**NARRATIVE**  
 THE PURPOSE OF THIS SURVEY IS TO LOCATE THOSE CERTAIN LOTS AND BLOCKS OF PACIFIC ADDITION TO MONROE AS CONVEYED TO DIANE M. WILT, TRUSTEE OF DIANE M. WILT REVOCABLE LIVING TRUST IN INSTRUMENT 2019-578769, BENTON COUNTY DEED RECORDS.  
 I HAVE DETERMINED THAT COUNTY SURVEY 4966 DID NOT USE PROPER SURVEYING PROCEDURES TO RECREATE THE ROADS, BLOCKS AND LOTS OF PACIFIC ADDITION. THEREFORE, I HAVE DECIDED NOT TO HOLD THE MONUMENTS SET IN COUNTY SURVEY 4966.  
 IN 1984, COUNTY SURVEY 7692 USED PROPER SURVEY PROCEDURES TO RECREATE THE ROADS, BLOCKS AND LOTS OF PACIFIC ADDITION. I HELD THE SAME MONUMENTS AT (A), (B), (E) AND (F) THAT COUNTY SURVEY 7962 FOUND AND SET. I THEN PROPORTIONED BLOCKS 29-36 WHILE GIVING FULL RIGHT OF WAY WIDTH TO THE STREET AND ALLEYS.

- LEGEND**
- ..... FOUND MONUMENT AS NOTED IN MONUMENT TABLE
  - ..... SET MONUMENT- 5/8" X 30" REBAR WITH RED CAP
  - ..... STAMPED "NORTHSTAR SURVEYING"
  - + ..... COMPUTED POINT (NOTHING SET OR FOUND)
  - ( ) ..... RECORD DATA FROM CS 7692
  - [ ] ..... RECORD DATA FROM PACIFIC ADDITION SUBDIVISION

REGISTERED  
 PROFESSIONAL  
 LAND SURVEYOR

OREGON  
 JANUARY 10, 2023  
 DAVID ANDREW HALLOCK  
 099849

RENEWALS: 06/30/2025



720 NW 4TH STREET  
 CORVALLIS, OR 97330  
 (541) 757-9050 FAX (541) 757-7578  
 www.northstarsurveying.com Job #24177

**LINE TABLE**

LINE	BEARING	DISTANCE
L1	S 10°46'22" E	50.31'
L1	S 10°47' E	50.3'
L2	S 10°46'22" E	50.07'
L2	S 10°46' E	50.00'
L3	S 10°46'01" E	29.32'
L3	S 10°46' E	29.3'
L4	S 10°46'01" E	50.05'
L4	S 10°46' E	50.00'
L5	S 10°45'41" E	118.72'
L5	S 10°46' E	118.94'
L6	S 10°45'19" E	97.39'
L6	S 10°46' E	97.3'
L7	S 10°45'41" E	75.01'
L7	S 10°46' E	75.00'
L8	S 10°45'19" E	75.00'
L8	S 10°46' E	75.00'
L9	S 79°07'23" W	109.91'
L9	S 79°13' W	110.00'
L10	S 10°45'41" E	50.08'
L10	S 10°46' E	50.00'
L11	S 10°45'19" W	50.09'
L11	S 10°46' E	50.00'
L12	N 79°08'13" E	109.87'
L12	S 79°13' W	110.00'
L13	N 10°45'41" W	25.04'
L13	S 10°46' E	25.00'
L14	N 79°08'13" E	109.87'
L14	S 79°13' W	110.00'
L15	N 10°46'01" W	25.04'
L15	S 10°46' E	25.00'
L16	N 10°46'01" W	25.04'
L16	S 10°46' E	25.00'
L17	N 79°08'13" E	109.87'
L17	S 79°13' W	110.00'
L18	S 10°46'22" E	25.03'
L18	S 10°46' E	25.00'
L19	N 79°16'46" E	109.97'
L19	S 79°13' W	110.00'
L20	S 79°13' W	110.00'
L20	S 79°12'23" W	109.96'
L21	S 79°13' W	110.00'
L21	S 79°13' W	110.00'
L22	N 79°06'08" E	109.97'
L22	S 79°13' W	110.00'
L23	S 79°09'16" W	109.95'
L23	S 79°13' W	110.00'
L24	S 79°10'31" W	109.94'
L24	S 79°13' W	110.00'
L25	S 79°13' W	110.00'
L25	S 79°07'42" W	109.92'
L26	S 79°13' W	110.00'
L26	S 79°13' W	110.00'
L27	N 79°07'54" E	109.88'
L27	S 79°13' W	110.00'
L28	N 79°08'13" E	109.87'
L28	S 79°13' W	110.00'
L29	S 79°07'54" W	109.87'
L29	S 79°13' W	110.00'
L29	S 79°13' W	110.00'