

C.S. # 1131

See notes in file

F.B. 54-5

1131

C.S. 255 FB#54 Pgs. 5-7

Survey for Johnson

T. 11 S. R. 6 W.

+28°  
2.143 1.893 North

+11°30'  
4.670 4.577  
1°0' L

1.876 1.871 N43E

-4°  
1.768 1.764  
3°42' L

+15°  
1.717 1.658

-24°30'  
2.238 2.036 N1°30'E

2.960 2.960  
3°48' L  
N3°E

+37°30'  
2.630 2.086  
1°48' L  
18.8+5  
N7°E  
+1.28 set 20 stk.

+42°40'  
2.981 2.509  
2°42' L

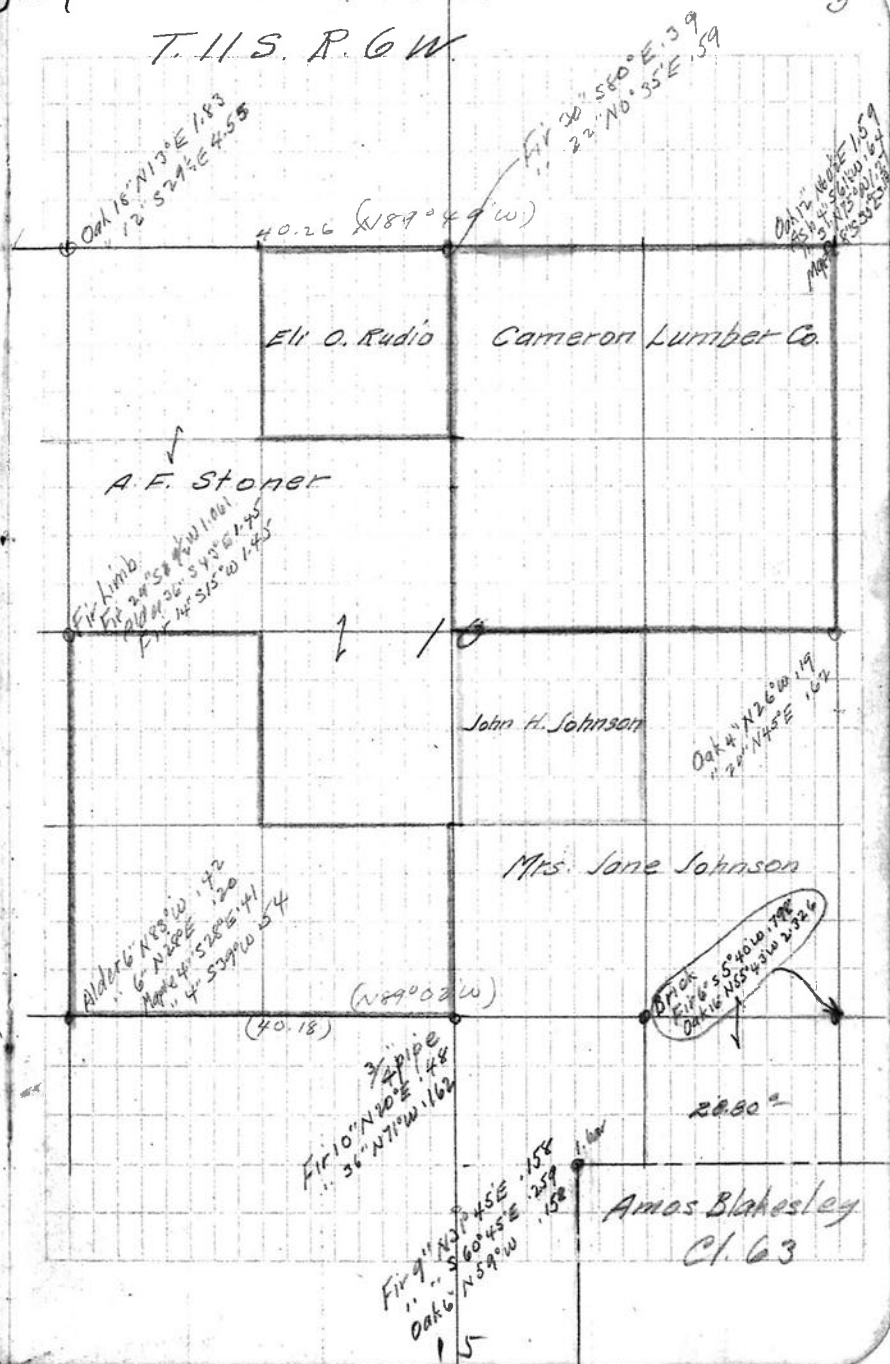
+22°  
1.945 1.804 N0°30'W

+7°  
1.700 1.679  
3°11' L

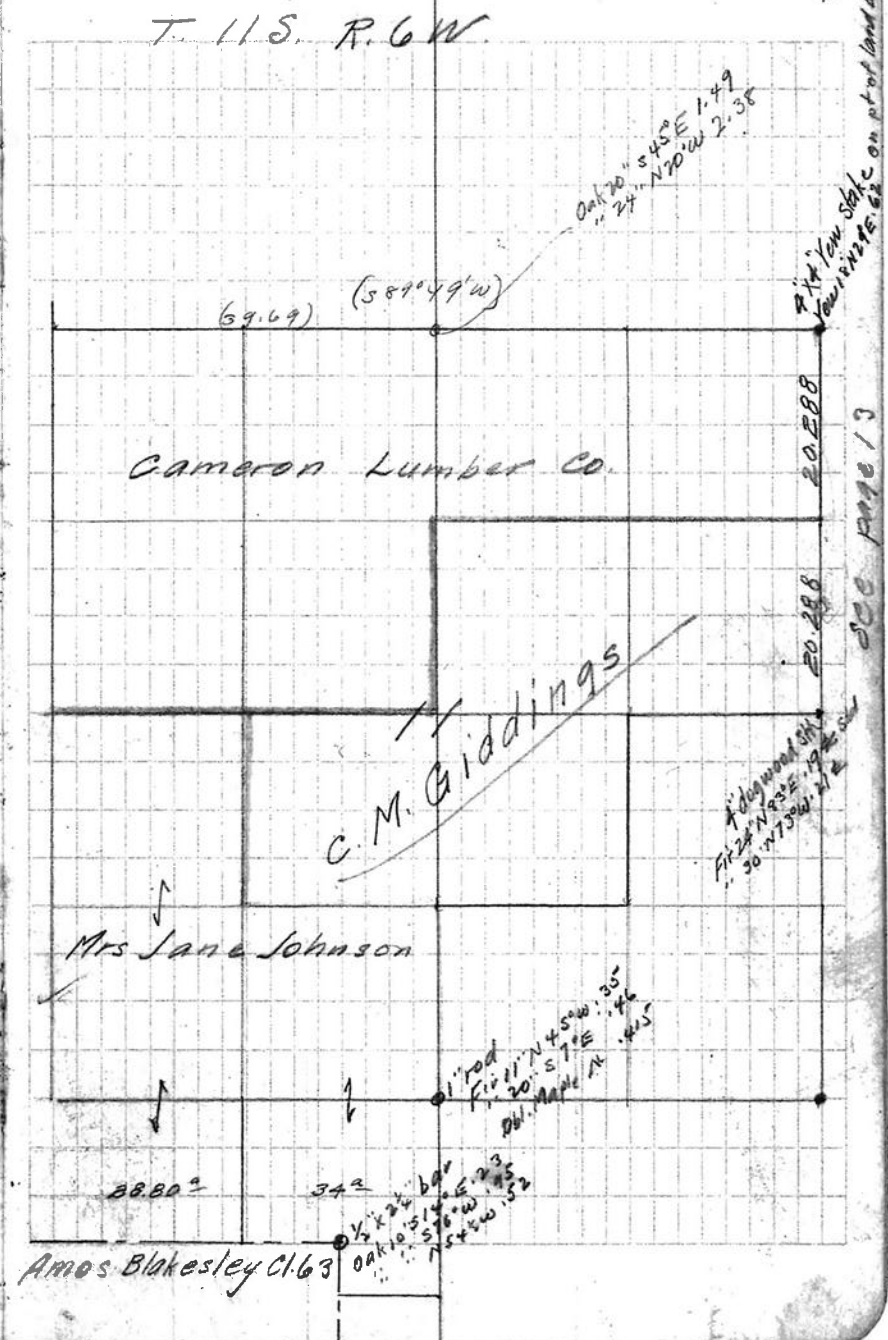
4.555 4.555 N7°E

+34°  
3.745 3.625  
2° L  
N2°E

65°  
2.633 2.458  
35.475



35.475				
<sup>+12°</sup> 1.732	<del>1.694</del>	<del>20266</del>		
		37169		
R. 840	R. 840			N 6 1/2° W
		<del>40.009</del>		
				Back to 20 cr. AZ 1° 18' L
		88' 30" R		
<sup>-8° 20'</sup> 1.710	1.692	"		
<sup>-10°</sup> R. 150	R. 118	"	S	587° E
<sup>-23°</sup> 1.790	1.647	"		586° E
<sup>-33°</sup> 1.770	1485	"		585° 30' E
		87° 30" R		
<sup>-29° 20'</sup> 4.400	3.838	"		583 1/2° E
<sup>-12°</sup> R. 513	2.473	"		"
		86° 0' R		
<sup>+16°</sup> R. 087	R. 008			585° E
		85° 0' R		
R. 360	R. 348			
		17.603		
		55° 48' R		
1.659	1.659	"		
<sup>+10° 30'</sup> 785	748	"		
<sup>+11° 20'</sup> 3.663	3.589	"		586° E
<sup>+7°</sup> 4.695	4.670	"		585° E
4.650	4.650	"		585 1/2° E
<sup>+14°</sup> 4.115	4.106	"		-14 1/2° = 17° 33'
				+ 1.81 = 70 fml



43°40'	171°40'R	
4.986	4.845	
5.000	4.963	
5.000	5.000	
2.750	2.750	
F -21°20'	79°02'R = 2°41'	Hit brick NE cor Sec 15
1.490	1.387	B.S. on Pt N
back to hub F		83°40'R = 6°23' L
1.406	1.404	85°03'R = 5°0' L
-13°	1.580	148 R
-26°20'	8.085	1.885
-22°	2.210	8.049
-15°	2.710	8.389
+10°	4.190	4.178
5.000	4.951	
3.560	3.534	
+12°	3.550	3.472
+27°20'	4.070	3.615
+23°04'	2.960	2.664
1.380	1.370	
4.630	4.630	
2.287	2.521	

171.40	
79.02	
92.38	
85.03 L = 5° L	
1.23	
S	
065	0.37 N
150	5.45
129	1.380
065	1.962 N
079	1.221
128	4.177
168	0.183 = 1°03'
199	
142	
022	
023	
026	
1.221 S	
065	
025	
090 S	
025	
155	
27.0	
027	
129	
426	
033	
065	
524	
038	
079	
641	
944	
128	
813	
077	
168	
1058	
091	
199	
1.348	
065	
142	
1.555	
31.6	
045	
1.912	
12.62	

171.40	
79.02	
92.38 L	
85.40	
176.18	
3°42'	
4047.6	
20,238	
20,199	
2.961	

Survey for Giddings  
May 12, 1930

Set on hub B.S. on hub E  
77°50' R 1.610 set  
Stake on fence line  
+ on N line of Sec.  
41°54' L 3.07  
33°26' L 7.495

83.199  
425 Wire fence  
+ 1.83 Creek

N 84° E  
N 87° W  
N 54° W