

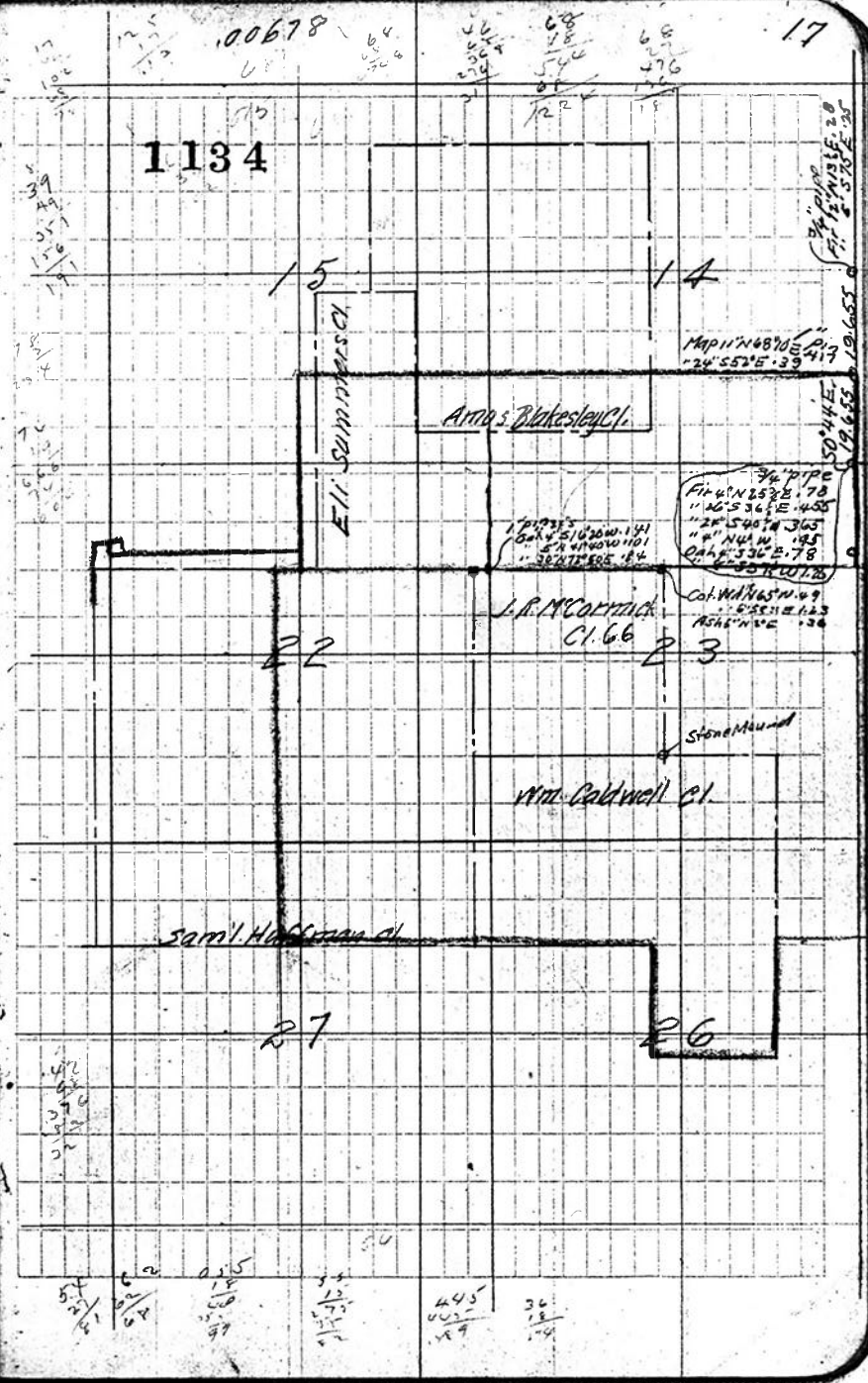
C.S. # 1134

See notes in file

F.B. 54-17

C.S. 255
 Began at N.W. cor sec 24
 James McDonald

+16°20'	2.271	R.177	N88°53'E	588°34'E	.0155
1.303	1.899				.0245
2.031	2.031				
		0°12'R			.0385
+11°20'	2.522	R.472		.0090 S.	.0465
+18°20'	1.530	1.452		.005 S.	.0515
		1°56'L			
+10°	2.220	2.187			
		0°40'L		.015 N.	.1415
+22°20'	1.415	1.189			
		0°06'R		.014 N.	.1625
+12°30'	4.770	4.655		.0085	.1855
		17.462		+2.75	
		2°14'R		Set cor	1086 W
+15°20'	4.890	4.713			24 P 10
		22.175			34 P 10
		21.089			136 N 09
		2°33'L			102.65
+21°45'	2.950	2.716			
		3°08'L		.133 N.	.1775
+22°10'	1.925	1.824			
		3°08'L		.099 N.	.2885
+8°	1.505	1.490			
		3°35'L		.082 N.	.3705
+16°40'	1.160	1.157			
		3°04'L		.068 N.	.4455
-16°	1.570	1.452			
		3°08'L		.081 N.	.5335

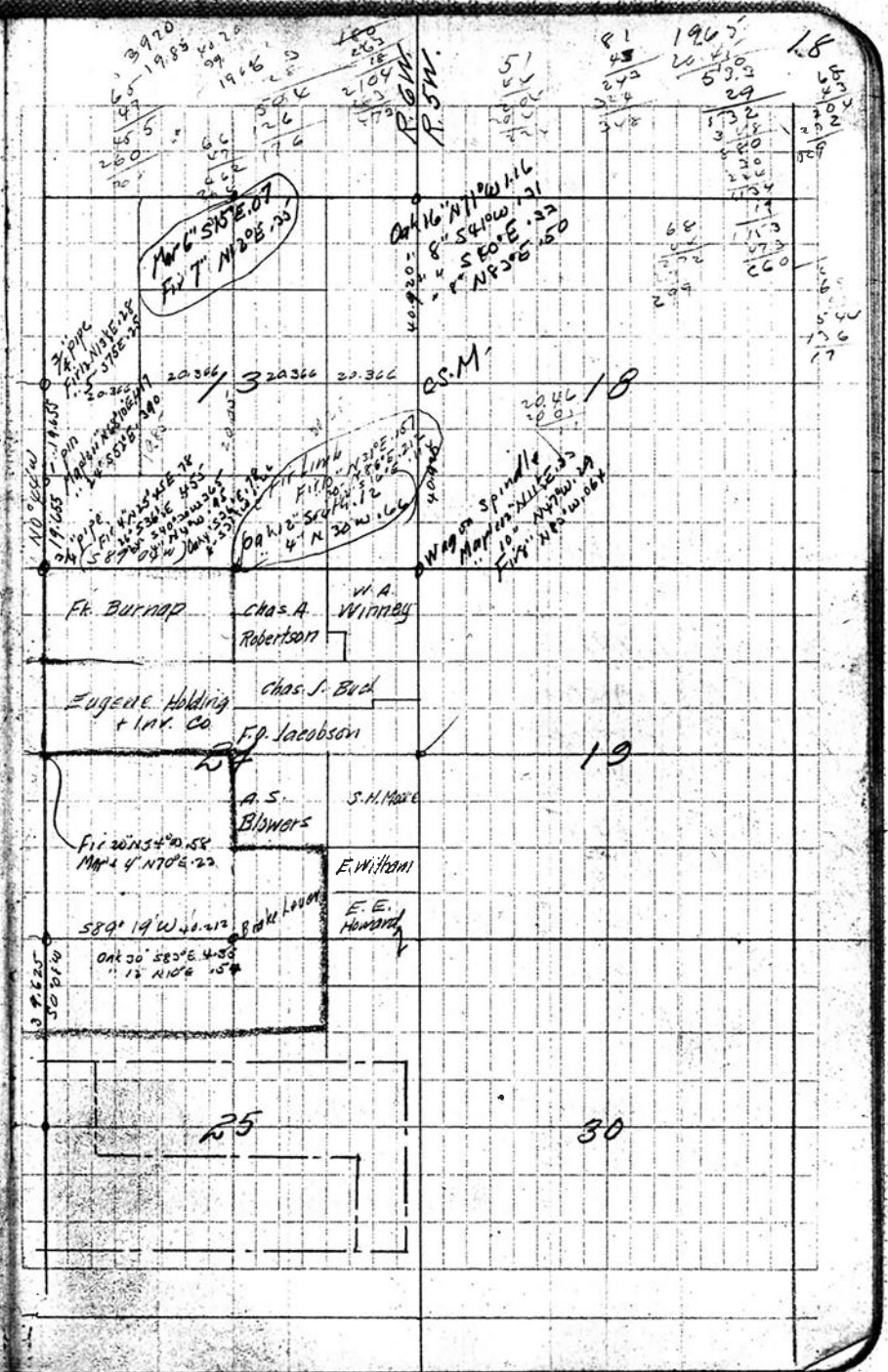


30.814
 -20°50' 4.670 4.365 4°38'L
 -21°00' 4.696 4.386 2°55'L
 -20°30' 2.808 2.636 591 39.565 39.10° 21K
 42.197 42.156 +02 42.178
 88°15'R
 348N 8805
 RR4N N34S
 473S

1732
 3/4" pipe by stake

N	S
.075	009
014	005
133	191
099	47.3
082	75.2
068	1410
081	1124
348	286
224	286
1.124	286
	320
	20.4
	3.92

42.178
 21.089
 110°23'



Back to NW cor

⁻⁵⁰ 1.652	1.646	50°45E
^{-14°41'} 1.480	1.432	0°27L
^{-24°30} 2.393	2.178	1°33R
^{-24°} 3.415	3.120	1°20L
^{+18°} 4.880	4.641	0°24R
^{+18°10'} 2.095	1.991	0°0'
^{30°} 1.060	1.060	"
^{-15°40'} 1.775	1.074	"
^{-21°35'} 2.565	2.385	0°13'L
^{-19°} 2.690	2.543	"

~~22070
 22809
 729348'~~

