

C.S. # 1157

Hardcopy 12-5 #38

also see notes in file

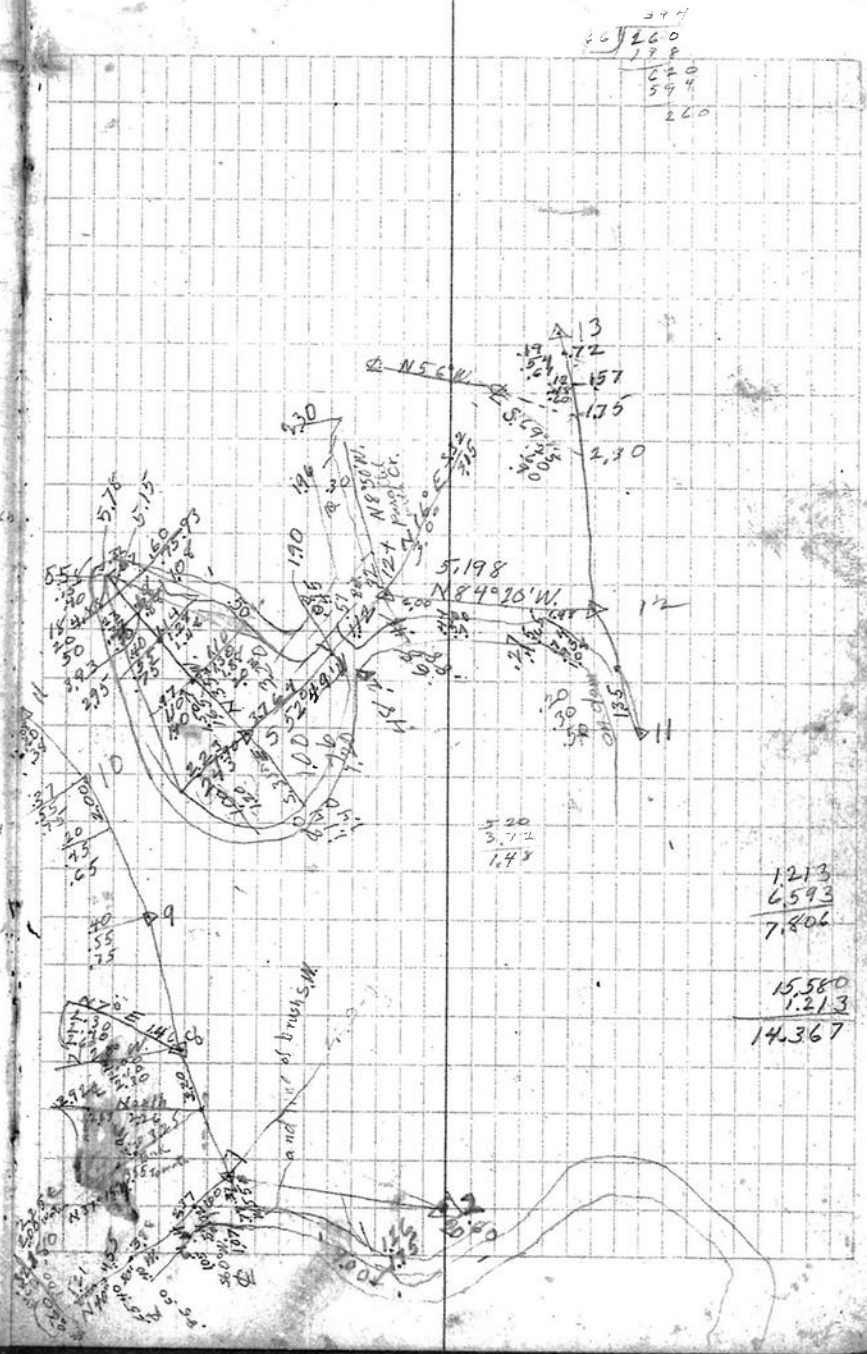
F. B. 60-5

Back to $\Delta 2$

7	N 10° 36' E	4.350
8	N 58° 45' E	4.808
9	N 74° 56' E	5.060
10	N 60° 23' E	5.498
11	N 25° 30' E	2.495
12	N 13° 44' W	2.574
13	N 33° 14' W	7.393
To 1/2" Pipe	N 89° 56' W	1.213
From $\Delta 13$		
And	East S. 89° 56' E	6.593
		7.773
	S. 15° 25' E	22.1670
	49 1/2° correction 15 1/2° S. (S. 89° 55' W.)	
	N. 89° 45 1/2' W.	
	Correction S. 15 1/2'	
	(S. 89° 59' W.)	

cabled drift indites.

33.50 W.
of SW 1/4 cor. of



294
260
128
620
594
220

1.213
6.593
7.806

15.580
1.213
14.367