

C.S. # 1381

Hardcopy 11-5 # 18

also see notes in file

F. B. 53-26

County Survey #129

S.M. Stout, Cl. 48 11-5 sec. 26

Bearings tying in Locke Cemetery 12-11-5

From B.M. on O.S.C. Campus.

N. 65° 52.6' E. at high N.E. cor.

of Chimes' tower of Methodist Ch.

N. 19° 22.6' E. to N. of 4x4 white

post on H.S. grounds

From H.S. L.L. 3° 27' to W. edge of elbow in large oak

From H.S. L.L. 3° 37' to E. edge of E. cupalo on barn N 15° 45.6' E

L.L. 2° 33' to E. edge of pile of baled hay & full fir tree

Using O on Knott's Hill in line with east edge of E. cupalo on barn

L.R. 21.8 m. to N.E. cor. of First add. to

Locke Cemetery N. 16° 07.4' E.

From N.E. cor. of Cemetery

L.L. 11° 38 3/4' to S.E. cor. S. 4° 28.65' W

L.L. to W. comb of Red barn 74° 52' = S. 58° 44.6' E

L.L. to cupalo on W.M.S. School 68° 37 1/2' = S. 52° 29.85' E

S.E. cor. of Dodge Hse L.R. 35° 47' = N. 51° 54.4' E

N.W. cor. chimney Mt. View School L.R. 47° 37' = N. 63° 44.4' E

Pipe on Wind mill L.R. 33° 24 1/2' = N. 49° 31.9' E

N.W. Richard's house L.R. 48° 45 1/2' = N. 64° 52.9' E

N.E. corner of A.N. Locke Cl. L.R. 44° = N. 60° 07.6' E.

CS 129

For Mattie McKnight

May 25, 1938

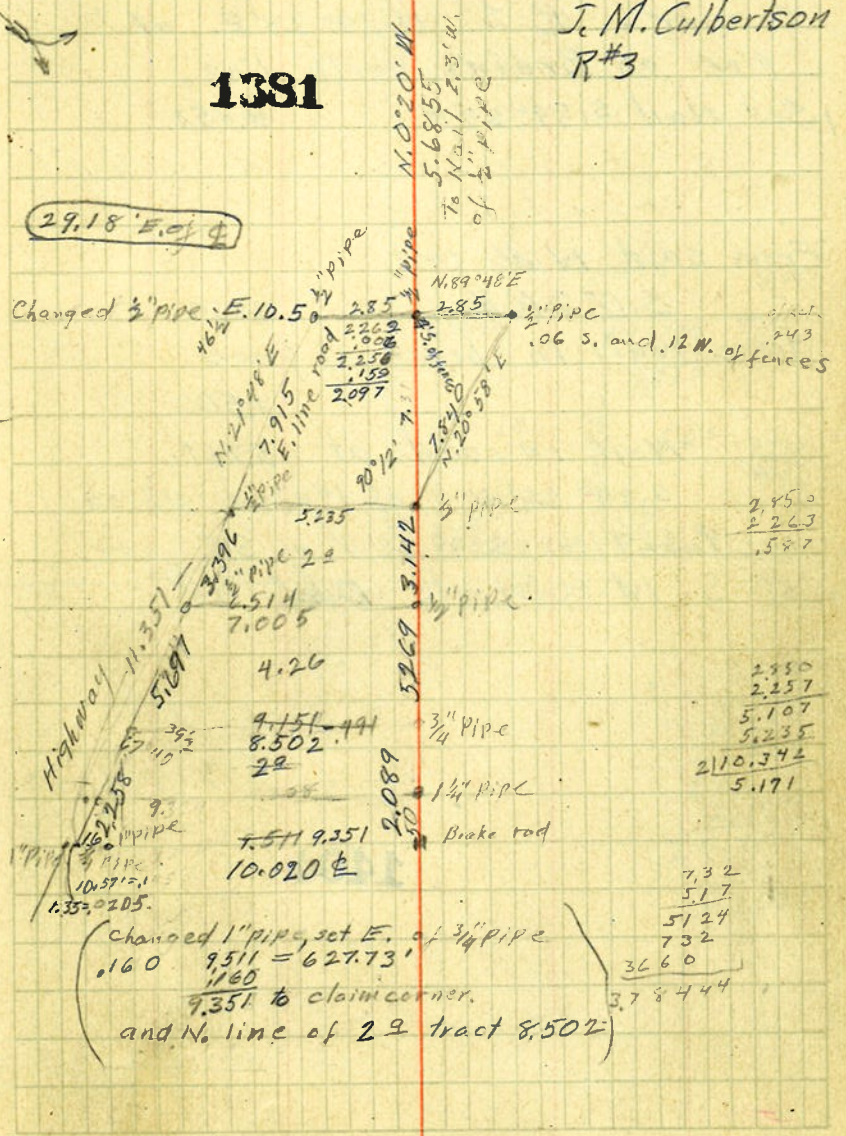
B. R. Porter Estate

Adrian Setts

J. M. Culbertson

R#3

1331



29.18' E. of O

Changed 3/4" pipe E. 10.5' 2.85' 2.262' 2.238' 1.59' 2.097' N. 89° 48' E .06 S. and .12 W. of fences

2.450
2.263
1.587

2.950
2.257
5.107
5.235
2110.372
5.171

(changed 1" pipe, set E. of 3/4" pipe .160 9.511 = 627.73' 1.160 9.351 to claim corner. and N. line of 29 tract 8,502')

732
517
5124
732
3660
378444

