

C.S. # 1442

Wilkin's Addition

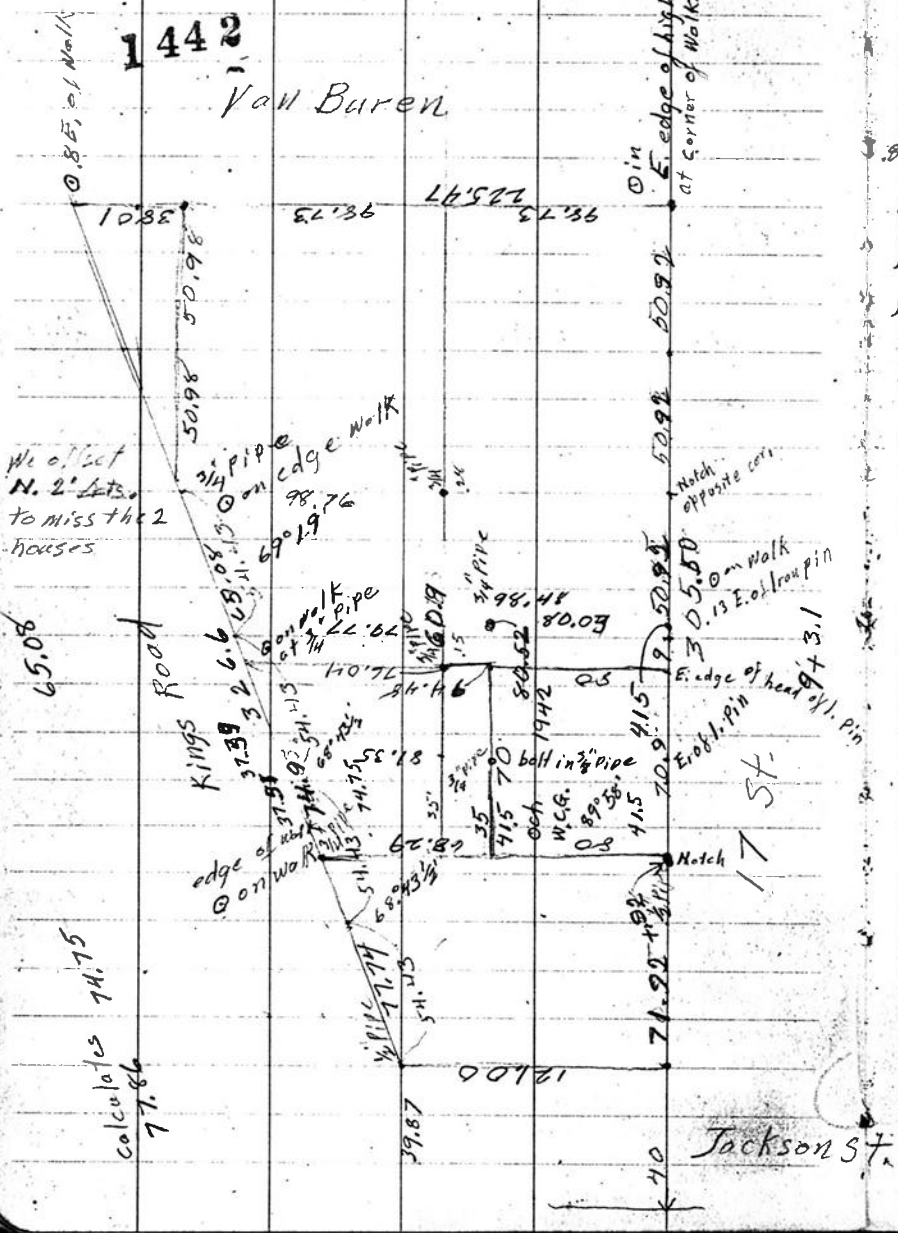
F.B. 85-85



Block 6, Wilkins' Add.

1442

Van Buren



For Mrs. E. H. Howard Aug. 1, 1939. 86
 And Crabtree Heirs.

For strip 31.5 wide at E. end
 cen. of block on E. side and $\frac{3266}{54.47} = 94.48$
 88 on cen. of block or S. of S.W. cor. of
 lot 4 L is $1^\circ 46\frac{1}{2}'$. 83.0' on
 front and 80.52' at $\frac{2.49}{80.52}$
 from 17th St. ? 148.1

ORIGINAL

Supplemental Plot of Wilkins Add.

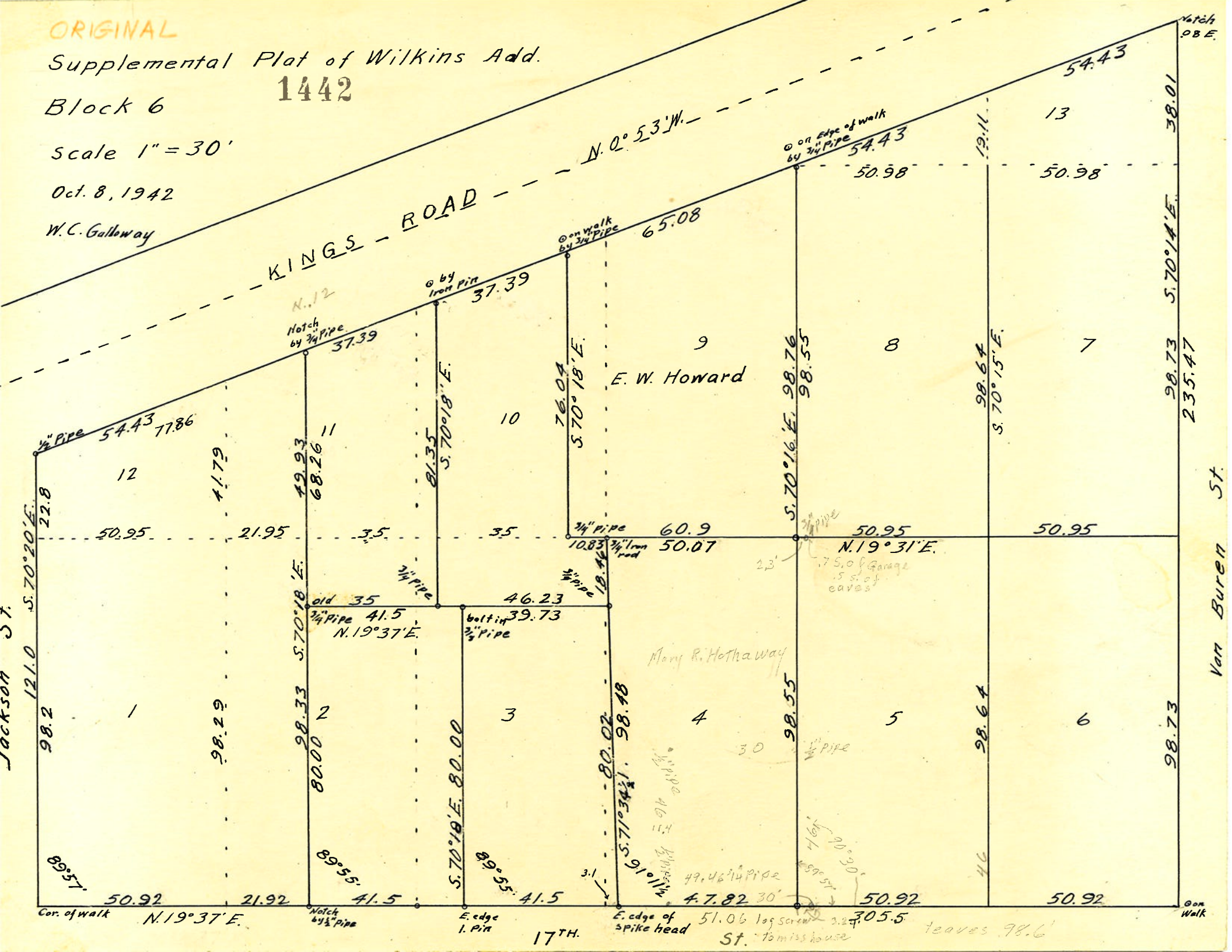
Block 6

1442

Scale 1" = 30'

Oct. 8, 1942

W.C. Galloway



KINGS - ROAD

N. 0° 53' W.

JACKSON ST.

Van Buren St.

17TH.

E. W. Howard

Mary R. Hathaway

St. Tom's house

leaves 98.6'

1/2" Pipe 54.43 77.86

Notch by 3/4" Pipe 37.39

by Iron Pin 37.39

on walk by 3/4" Pipe 65.08

on Edge of walk by 3/4" Pipe 54.43

121.0 S. 70° 20' E.

98.73 S. 70° 14' E.

Notch 98 E.

22.8 50.95 21.95 41.79

19.93 68.26 11

81.35 S. 70° 18' E.

76.04 S. 70° 18' E.

98.76 S. 70° 16' E.

98.64 S. 70° 15' E.

235.47

98.2 98.29

28.33 S. 70° 18' E.

80.00 S. 70° 18' E.

80.02 S. 71° 34' 1/2' E.

98.55

98.64

98.73

89° 57'

89° 55'

89° 55'

3.1

41/64 90° 30'

46

Cor. of walk N. 19° 37' E.

Notch by 3/4" Pipe

E. edge 1. Pin

E. edge of spike head

51.06 log screw

305.5

on Walk

50.92 21.92 41.5

41.5

39.73

47.82 30

50.92

50.92

old 35 3/4" Pipe 41.5 N. 19° 37' E.

46.23 bolt in 3/2" Pipe

10.83 3/4" Iron rod 50.07

75.0 Garage 15 sq. eaves

49.46 1/4" Pipe

30 1/2" Pipe

23' 3/4" Pipe

50.95 N. 19° 31' E.

50.95

22.8

54.43

41.79

21.95

19.93

37.39

37.39

65.08

54.43

50.98

19.11

50.98

13

54.43

38.01

98.73

235.47

98.73

98.73

on Walk

N. 12

9

8

7

12

11

10

1

2

3

4

5

6

on Walk