

C.S. # 1459

Hardcopy 12-5 # 31

also see notes in file

F. B. 57-17

17

206

1459

C.S. For Chas. Durrell  
Pernot Tracts Jan. 25/1940

Beg. at a 1/2" pipe &amp; Car road

Which pipe is 29.13 E. of pavilion  
" " 19.4' from Locus tree

For John Scherer

Beg. at pipe &amp; Road at east end of Tracts

1 S. 89° 10' W. 2.495  
Set 3/4" x 44" pipe & .299 Post on cor.

2 S. 89° 10' W. 2.495

Set 1/2" l. rod (end gate rod) 10.5567

3 S. 89° 10' W. 2.495  
S. 89° 10' W. 2.495 set a 1/2" rod (end lamp post)  
(set an end gate rod) 1/2" l. rod.

Back to Δ 1

4 S. 0° 05' E.  
Correction W. 19' 9.8567

S. 86° 54 1/2' E.

L.L. 86° 48' 2.514 to 3/4" pipe S.E. cor.

Thence S. 89° 10' W. 2.495 set a 3/4" bolt S. 1833

6 S. 89° 10' W. 2.495 set 3/4" l. rod S. 1833

7 S. 89° 10' W. 2.495 " 1/4" pipe

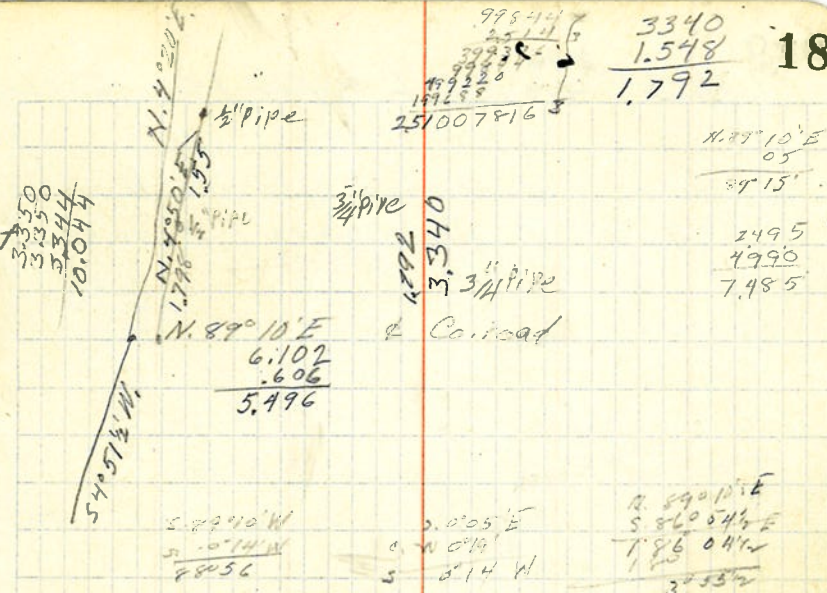
From east line of Pernot Tracts

S. 89° 10' W.

44.198 - .059 to Durrell's thence N. 0° 14' E. to 1/4" pipe

Then N. 89° 10' E. 2.987 a proportional distance

Set, N. 0° 14' E. 20'



3350  
3350  
3344  
10.044

N. 4° 20' E.

1/2" pipe

N. 89° 10' E  
6.102  
.606  
5.496

975.44  
251.11  
39.33  
171.25  
251007816

3340  
1.548  
1.792

18

N. 89° 10' E  
05  
29' 15"

3/4" pipe

4.292

3.340

1/4" pipe

&amp; Car road

2495  
2990  
7.485

10.034

S. 89° 10' W  
2.495  
2.495

S. 0° 05' E  
S. 89° 10' W  
S. 89° 10' W

N. 89° 10' E  
S. 86° 04 1/2' E  
1.86 04 1/2  
3.532

S. 0° 05' E  
S. 86° 53' E

S. 89° 10' W  
S. 89° 15' W

2.514  
Cor. 3° 55'

2.5081  
2.480  
4.988

10.04  
9.8567  
.1833  
11.164  
1.1401082  
033  
.173

.05582  
251  
5582  
1309  
6545  
2618  
.0325559

4.99  
7  
34.930  
6.278  
2.990  
44.198  
9.980  
34.219  
34.159  
.059 short

2.495

17.970  
17970  
197.67



C.S. #206 Cont. For Mrs Galletely - Pernot Tracts

@ pipe in q. @ end road Measure W along

Q. Road Q. @ 658.68 spike per W.C.G.

658.43 L. 88'56" 18 E. 466' Iron pin  
20'

658.43  
657.77

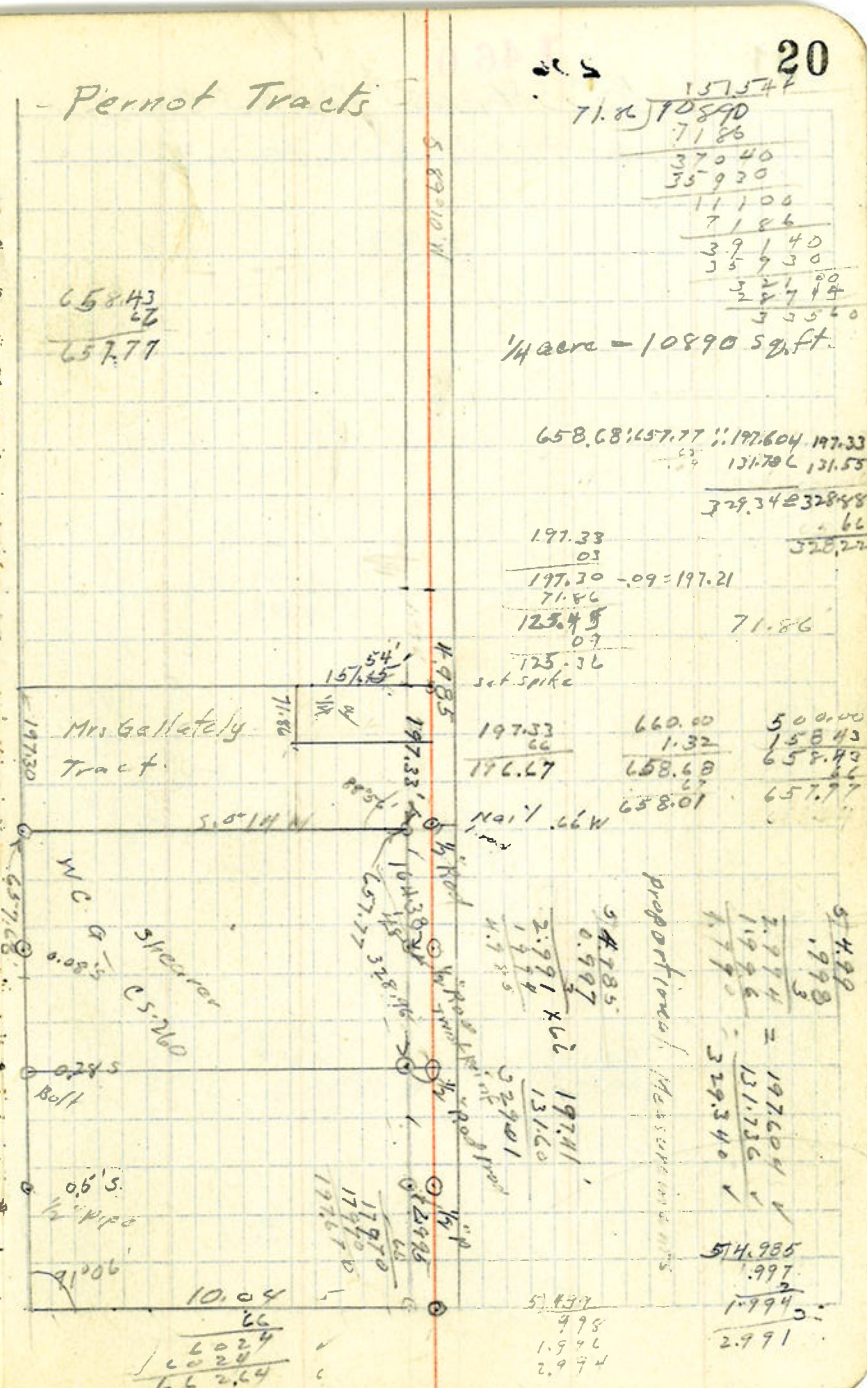
@ 1/2 Pernot tracks offset 5.10.00'

L. 88'54" to flag @ 10.00 S. of L. Scherer.  
38.52  
02' error.

2.995' ± 1/2 pipe R. 9.50  
4.99' ± Bolt is R. 7.72'  
7.985' ± Pin is R. 9.92'  
8.98' ± 1/4 pipe R. 10.00  
657.68 R91004  
Thence cont. W.

@ 125.45' set flag

@ 197.30' set 1/2 pipe R. 91006 10.00'



157.54  
71.86  
370.40  
359.30  
11.100  
71.86  
371.40  
359.30  
321.90  
355.20  
1/4 acre = 10890 sq. ft.

658.68 + 657.77 = 1316.45  
13170.6  
131.55  
229.34 + 328.48  
557.82

197.33  
03  
197.30 - 09 = 197.21  
71.86  
125.45  
07  
125.36  
set spike

197.33 660.00 500.00  
66 1.32 158.43  
196.67 658.68 658.43  
66 66  
658.01 657.77

Proportional Measurements  
54.99  
1.998  
2.974  
1.998  
4.995  
329.340  
54.985  
1.997  
1.994  
2.991

10.04  
66  
602.4  
602.4  
622.44  
57.837  
4.98  
1.946  
2.991