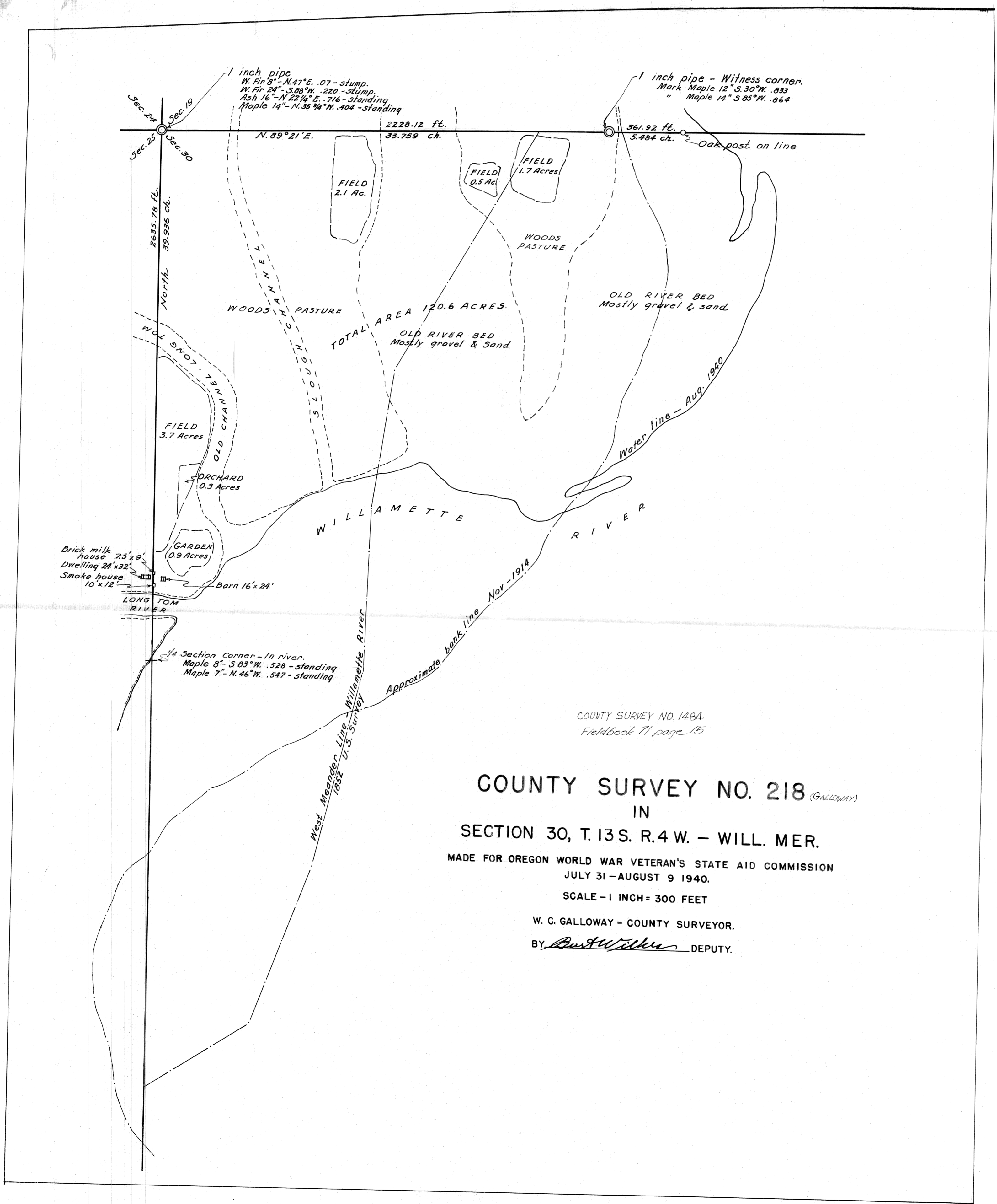


COUNTY SURVEY NO 1484



COUNTY SURVEY NO. 1484
Fieldbook 71, page 15

COUNTY SURVEY NO. 218 (GALLOWAY)

IN

SECTION 30, T.13S. R.4W. - WILL. MER.

MADE FOR OREGON WORLD WAR VETERAN'S STATE AID COMMISSION
JULY 31 - AUGUST 9 1940.

SCALE - 1 INCH = 300 FEET

W. C. GALLOWAY - COUNTY SURVEYOR.

BY Paul Walker DEPUTY.

1484 Continuation C.S. 218

Made for World War Veterans State

Letter to Mr. Jordan asks to show on plat. location of buildings, location of existing fences whether on line or not, the location & approx acreage of any open fields, location of River & any sloughs that border on property or are included within its lines

Property is lots 6, 7 & 8, sec 30, T. 13 S. R. 4 W.

© W3+ 7/31-40

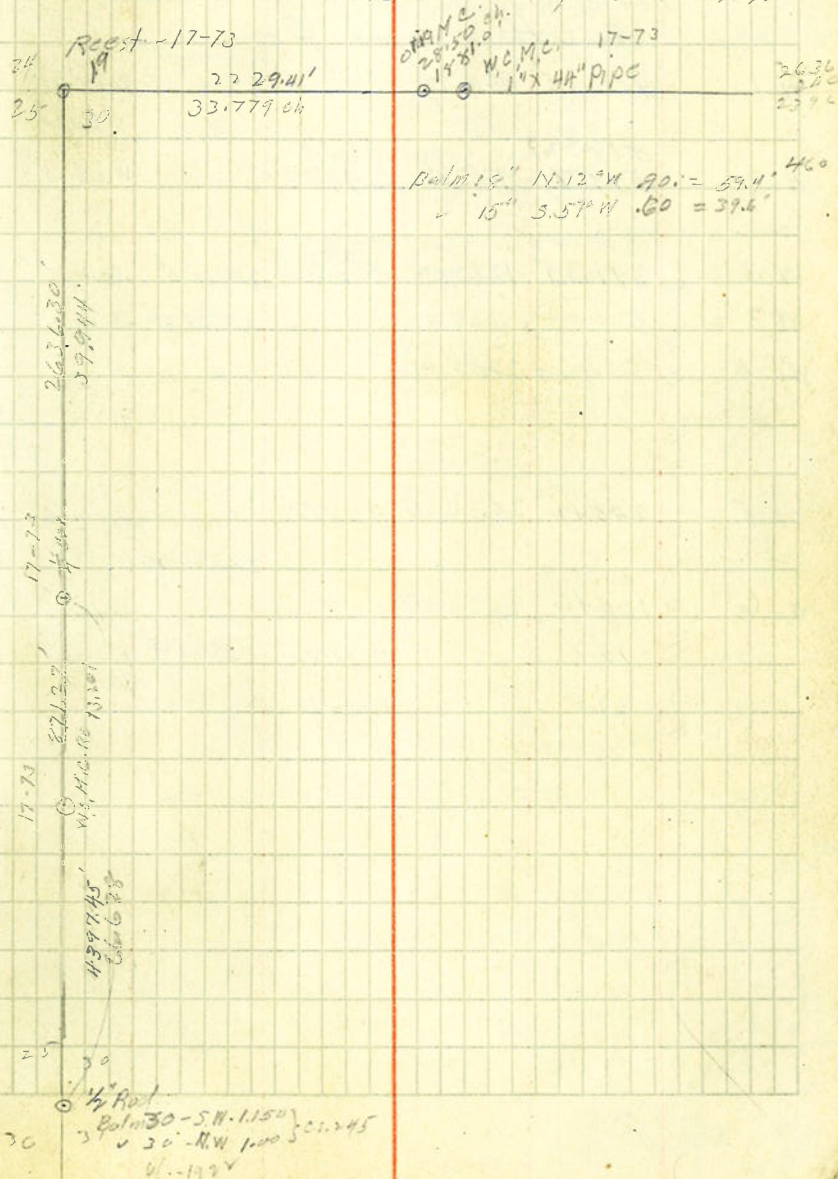
@ W3 1/2 0° on W3-

N. R. 30° 12' E	482'	his bank of water.
N. R. 52° 10' E	312	edge field
N. 70° 40' E	312.5	bank slough
N. R. 70° 40' E	217	L. field
N. R. 61° E	128	cov. orchard
N. R. 154° 30' E	230	2 cor garden plot point orchard
W3 1/2 A N. R. 155° E	454.2	same as
N. 123° 20' E	49	Garden edge
N. 133° 40' E	129	RIV Bank 3' hi
N. 73°	87	edge Garden
N. 38° 40' E	133	✓ ✓
N. 20° 30' E	171	✓ ✓
N. 32° 45' E	191	✓ ✓ slough Bank
N. 33° 50' E	177	edge Garden
N. 287° 25' E	155	✓ ✓
N. 244° 30' E	121	✓ ✓
218° 30'	94	✓ ✓
✓ ✓	30	✓ ✓

Sec. 30 - T. 13 S. R. 4 W. Will Mer

Kid Commission July 31 - 1940

Bert L. Barber - L. 3045 - Guy W. Jordan Agr.



July 31-40

Begin @ 1" pipe, 19, 24, 25 & 30

Ash B.T. N 22 1/4° E. 716 chs. Only

South along fence

W. 1 406.05 404.95 s 54° 13' W W. 29.856

W. 2 518.329 519.72 42.329 L. 1938 V W. 28.069

W. 3 300.153 311.35 1223.42 R. 15° 00' S. 1525° E W. 11.731

W 3 1/2 500.00 1723.40 S. 0° 25' 20" W. 14.34

W. 4 1064.64 2288.86

W. 5 248.19 253.625 R. 22° 50'

W. 6 104.16 2632.58 R. 37° 40' 3.16° 05' W E. 31.51

W. 7 15.1 R. 146° 10' N. 11° 25' W S. 3.15

W. 8 22.5 R. 8°

True line S. 0° 05' 20" W

Living B.T.

@ 100 cross fence

Fence is R. 3'

@ 250 Cross fence

Fence is L. 3 1/2' + 5' = bank

@ 135 = 3 bank slough

Fence is R. 12.6'

Fence is R. 14.7' @ + 322 F. R. 165'

+ 4' = Bank Long Term

+ 130' = s

Lt. 15' = bank Willametta

+ 30 Bank

Top River Bank

floor in River

S 83° W. 34.80' B.T.

N 46° W 36.1' B.T.

Bank at 100' ±

at about 500's - Bank R. 200' ±

Sta	Course	Dist	N	S	E	W	S	W
S 61° W	S						0.00	100.00
W. 6	S 11° W 2'			2632.55			2632.55	115.392
SW B.T.	S. 62° 05' W	15.1'		7.53			13.09	2600.04128.48
W. 6	N 83° E	34.80'	4.25		34.59		2635.83	192.89
W. 6	N						2632.55	115.39
N.W. B.T.	N 11° 25' W	22.5'	22.05			4.45	2612.50	113.84
W. 7	S 14° E	36.1'		25.08	25.97		2635.51	913.87

180
62.4
50.24
1564.6
22.7
Clear W. ch 2
J. Johnston ch 2 exp

404.95 212.60 740.35
9.97 402.8 200

406.00 2.60 8580
9.13 2.86 6455
29856 11.47 5035

51833 2.7 14593 51
7.79 8823 3
51222.71 5770 2
81.26 6455 6
281251.58 2225 s

300.15 12077.334 4
7.98 4086 7
31136 2.49 8249 6
15.25 9.14 24615 4
5277 11.9 17864 1

22024.40
37.40
560.64 40 N
s 22° 25' 00" N
146.18
5168.35 W
N 11° 25' W

1938
14.13
15.25
18.59 40
0.25 20
22.50
22.27 40

498.19
25.20
248.19
49.41 C
39.0
10.71 C

248
115
130

198.56
38.213
68.069
82.222
74.708
36.84

18.392
41.61
22.553
1829

24.392
39.711
115.322
35

2635.60 115.39
32.12
3.05 21.57 E 93.81
43.901

2635.60 115.39
32.12
3.05 21.57 E 93.81
43.901

2635.60 115.39
32.12
3.05 21.57 E 93.81
43.901

2635.60 115.39
32.12
3.05 21.57 E 93.81
43.901

2635.60 115.39
32.12
3.05 21.57 E 93.81
43.901

2635.60 115.39
32.12
3.05 21.57 E 93.81
43.901

2635.60 115.39
32.12
3.05 21.57 E 93.81
43.901

2635.60 115.39
32.12
3.05 21.57 E 93.81
43.901

2635.60 115.39
32.12
3.05 21.57 E 93.81
43.901

2635.60 115.39
32.12
3.05 21.57 E 93.81
43.901

2635.60 115.39
32.12
3.05 21.57 E 93.81
43.901

2635.60 115.39
32.12
3.05 21.57 E 93.81
43.901

2635.60 115.39
32.12
3.05 21.57 E 93.81
43.901

2635.60 115.39
32.12
3.05 21.57 E 93.81
43.901

2635.60 115.39
32.12
3.05 21.57 E 93.81
43.901

7/31

① W4 - 62.4' Pipe Hoehn W of range line

L 102° 27' 92.36' 0.0° = N. 3'

L 89° 16' 29.3' L Porch

✓ 35.0' L Ho. 32x24'

✓ 67. L ✓

✓ 73. L Porch

L 126° 13' 28.3' L Brick Ho 7.5x9'

R 114° 42' 28.5' L Barn 14.5x

R 67° 10' 27.0' L ✓ 6 on E side
Levitolean!

L 160° 30' 25.4' L Smoke 60

L 142° 27' 31' L 12' N.E.S.

8/3

At 511 - Transit line = N. 89° 29' E.

L S. 10° W 10' Edge field

S 40° W 149' ✓ ✓

S 21° 30' W 224' ✓ ✓

S 15° 30' W 280' ✓ ✓

S 10° 15' E 345' ✓ ✓

S 22° 50' E 360' ✓ ✓

S 40° 15' E 255' ✓ ✓

S 66° 35' E 225' ✓ ✓

S 81° E 209' ✓ ✓

8/1-40

@ sec. Cor. 19, 24, 25 & 30	N 4° 13' E		
L. R. 85° 16' ✓	N 89° 29' E		
1 N	345.10		
1 N	403.34		N. 0.58
2 N	370.79	774.13	41.69
3 N	309.70	1070 1083.83	67 N. 2.136
4 N	406.25	1490.08	55 5.24
5 N	322.40	1817.48	71 3.75
6 N	411.93 ✓ 412.02	2229.41	90 ✓ 4.15
W.C.M.C.	13.62	2778.12	113.52 1.129
8/3			
6 N		48° 01' 30" L. 1° 20' 20" 2440.87	Pipe 1"
7 N	361.92	L. 81° 32' 20" N 89° 21' 40" E	
M. 6	73.76 ✓	2,355.35 R. 118° 31' 40"	
M. 5			

Fence to E is 55' N.
to S is 2' E

W bank slough - 12' dp.
- 18.5' E Bank 5'

- 70' E side field
+ 4' Bank 10' hi

- 70' E Bank old channel

1881 orig. M.C. sec. sketch for R.T.S.

Mark 22030
2 Maple 12 S. 30° W 53.35 (4833)
✓ 14 S 95° W 57.0 (4864)

+ 60' = Bank

344° 04' 1/2	85° 16' 05"	492.34	
		90.00	
		403.34	
N 89° 29' E		55	
1° 12' 40"		540	
4° 30' 30"	N 90° 44' 40" E	1500.79	
1° 12' 40"		130.20	
4° 50"	S 89° 18' 20" E	370.79	
89° 29'	1° 20' 30"	499.7	
89° 21' 10"	S 90° 38' 50"	1900	
	N 89° 21' 10" E	309.70	
	L. 81° 32' 20"		
	N 7° 48' 50" E	496.25	
	R. 118° 31' 40"	90.00	
	126° 20' 50"	406.25	
	180		
	S 53° 39' 30" E	497.40	
		170.00	
		327.40	

4.85	0.6857417	
2228.12	3.3479386	
7.0° 7' 29"	73378031370	
1° 12' 40"		
1° 20' 30"		
		471.92
		1150.00
		361.92

Meanders 8/2-40

W-5	147.5	L. 140° L. 142°03'	
W-5	303.	L. 142°41'	1136°53'40"E
M-1	387.08	R	R. 114° L. 61°52' L. 158'
M-1		131°58'	R. 10°39'20"
			N. 47°33'00"E
M-2	548.45	157°49' 57°16'20" N. 17°16'20"	N. 66°49'20"E
M-3	65.49 1267.60		
M-4	8/2-40 1034.74	L. 146°03' L. 48°21'	N. 18°28'20"E
M-5	770.32	221°20' L. 72°08'20"	N. 53°40'00"W
M-6	1521.41	L. 118°32'	

Junction S.L.T. + W. Willamette Banks

497.08
110.00
387.08

Bank L.T. & Will

29' Bank Will + 33' water
102.9' W 3/4 A
161' v L.T.40 - Bank Will. water 20 RT
135 Water Will
160 - Bank L.T. old chan L. 40' - R. 4' = water on Will
200 v v L. 140' - R. 32' v
320 v v L. 81' Will bank - R. 38' = water Will

Bank Will - L. 4' Water R. 4'

120 BANK IS L. 20' water L. 10'

190 Bank L. 12' = S. side slough Will water L. 2'

260 Bank L. 26' = " Will water L. 10'

500 water R. 20' Bank L. 12'

535 v L. 10'

615 v L. 20' = S. bank old channel water R. 135'

R. 150' = Bank Will + N. bank of Will R. 32' 1497.77
R. 100' Water R. 545 @ 1:50 v 1390 267.87

120 = S. bank old channel @ 500 (200 to 150) water

270 Bank R. 702' Gravel bank

500 v R. 111 320 = water

R. 100° - 80' Bank - 158' = water

+ 58' - Bank v 142' = v

R. 136° 295' v + 150' = water

320 Bank R. 130' = water

450' v of old channel - L. 60'

@ 500 v L. 45'

@ 685 Water R. 90' & L. 30' 50' wide

+ 718' = water

R. 12' W L. 59' W

L. 30° - 75' - W point Gr Bar

@ 190 Water Willamette slough

770.32
2918'20"
4232'20"

25

At. N4

N4 A 175.2

29.0

103

184.

136

122

88

N.3

176

427.35

@ N 2 + 93.67

444.9

81.3

S24°50'E

N84°20'W Cor. field

S34°W ✓ ✓

S32°13'E ✓ ✓

S48°30'E ✓ ✓

S84°50'E ✓ ✓

N77°E ✓ ✓

S5°30'W ✓ ✓

S1°40'W ✓ ✓

S1°39'W ✓ ✓ R.3'

S2°53'E Cor. field

26

LR 70° ± 140 ←

field = 6'

@ 30 cor. field

✓ L. 122.1 ←

-5.1'

49.0'