

C.S. # 1529

Hardcopy 12-5 # 18

also see notes in file

F. B. 87-17

6
12
18
24
30
36
42
48
54
60
66
72
78
84
90

CHAINS

17

1520

E. T. Reed Subdivision July 1941

Initial point 3395.5 feet S. 0°00' W. along the
claim line 3370.5 and 942.0' S 89°44' E. of

the N.W. corner of James A. Bennett D.L.C.
No. 45, T.12 S. R.5 W. Will Mer. in Benton County

Oregon and Running thence N. 89°44' E. 615.0
to pt. 25' N of N.E. Cor. LONGHILL HTS
Thence S 0°12' W. 691.8 feet on S. line of

Thence S 89°44' W. 615.0 Along S.D. line to
along E. line of S.D. Division Extension
E. Cor. Longhill Hts N. 0°07' E. 691.8 to 9 =

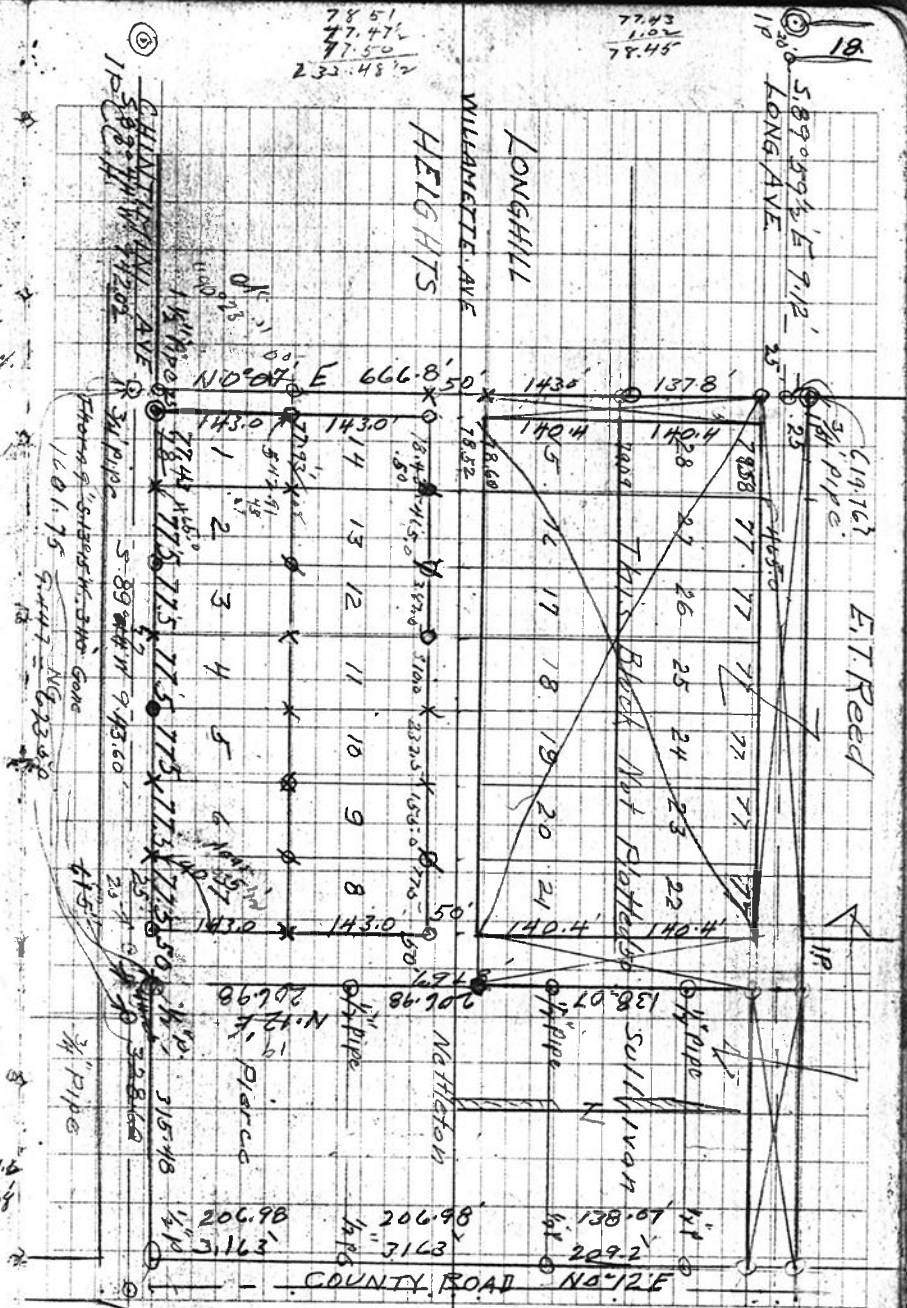
With 1/2" pipe in etc up to surface
IP

- 1/2" pipe x
- 3/4" pipe o
- 1" pipe &
- 1 1/2" &

1/4 sec. cor 3/10 140.14

5375 touch S. side Winter Branch C.N. 80° E

Cak 24" - N. 12° E 310.2046
36" - S 61° W - 238157.08



78.51
77.47
77.50
232.4874

77.43
1.02
78.45

18

103
143
206