

C.S. # 1530

Hardcopy 11-5 # 19

also see notes in file

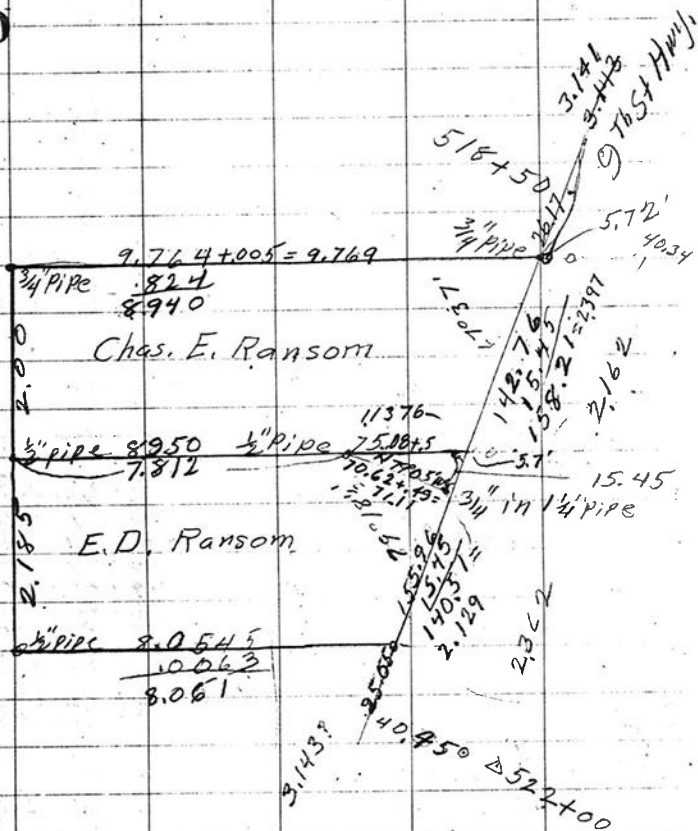
F. B. 92-36

36

C.S. #105 & 129 T11-5

1530

2.907



For Benj. Ellis

July 7, 1941

37

T11-5
11 1/2 Fir 12 N 75° E 43
12 1/7 Dogwood 8 S 77° E 27
Maple 12 S 24 1/2 W 30

Fir 8 N 74° W 25

6 1/5 Fir 6 N 39° E 61
7 1/8 Fir 2 N 43° W 64
Dogwood 6 S 55° W 36
" 533 E 56

Copy of original Notes

July 11, 1942

N.E. cor. of Chas. E. Ransom's

Set W. on line 5.72', set 3/4" pipe

Int. \angle 67° 37' 142.75'

Set D.W. 5.7'

at 158.21 S, 21° 36' W.

Set a 3/4" pipe in a 1/4" pipe

155.96	142.76	158.21
15.45	155.96	140.51
140.51	298.72	298.72
	26.17	26.17
	25.05	25.05
	350.38	349.94
	349.94	