

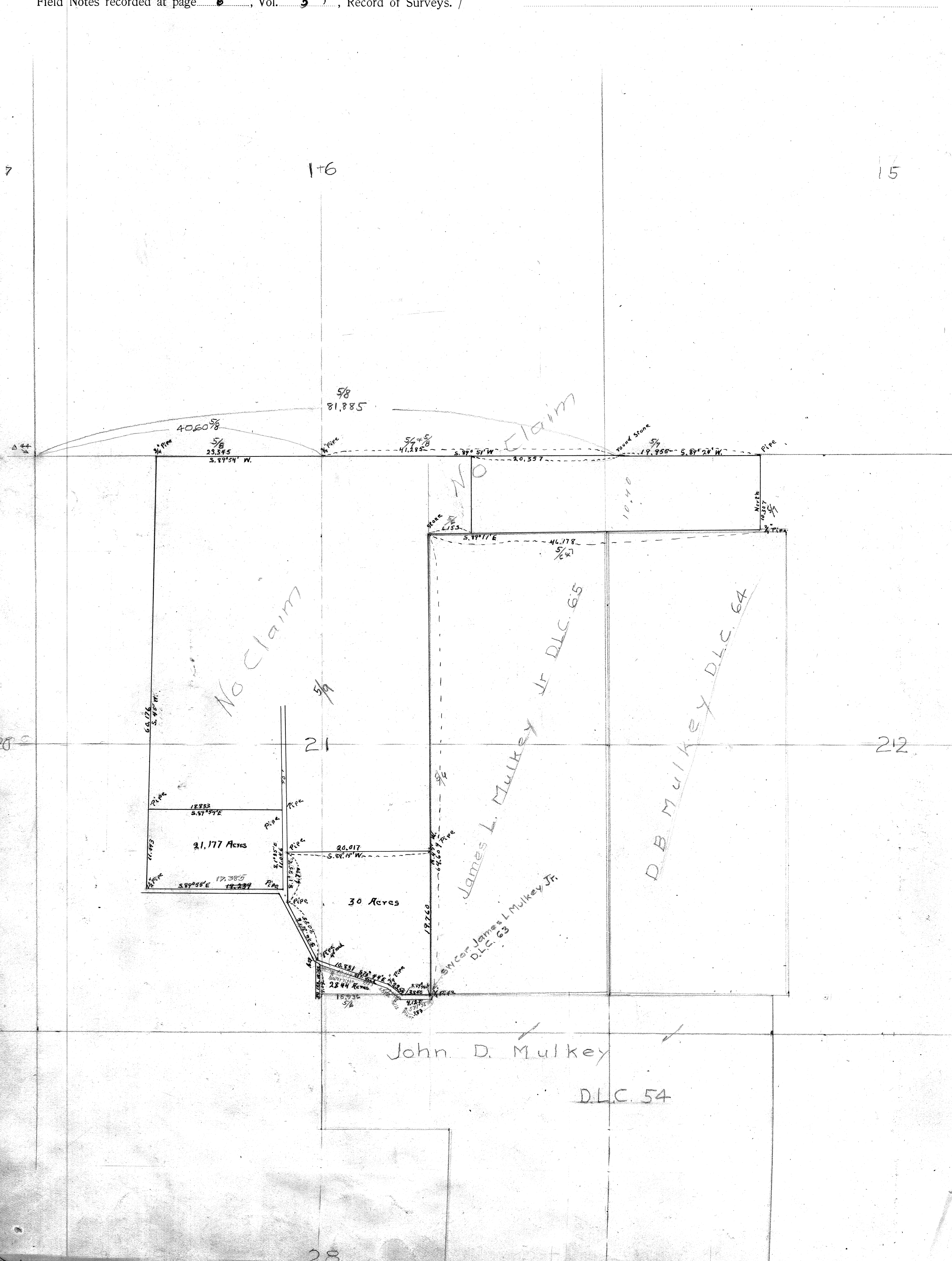
Plat of Survey No. 60 #158 Claim No.

MADE FOR P.A. Swanson.

Section 21+22 Township 11 S. Range 5 W.

Scale: 10 Chains to the Inch.

Field Notes recorded at page 6, Vol. 5 field book, Record of Surveys.



5.468
4.611
5.227
1.442
15.931

1.224 N.
2.447 N.
1.774 N.
7.229 S.
1.045 N.
6.39 S.
4.06 N.

7988
7986
12.974
206
1390

729 L
1527 R.
2417 R.

639 L T₂ L = 406
18941 = 1098
T.O. Mulkey Cl. 574.
15.941

3" pipe N.W.
20K 6" S. 20° E. 1.707

0.21 E.
135 E.
456 E. 40711 = 24
1318 4560
4487
230
2890

2.488 717
2.119 814
2.273 715
2.982
15.259
64.603

7.711 L = 413 = 23. W.
64.629

687
6193
SOL. has also sign in N. 2
for dividing tract at E end of Hwy. L.
102 = 10.913

6 C.S. # 60 For P.A. Swanson
Beg. at S.W. cor. Jas. L. Mulkey Cl. 15
Sta. S.W. 1588

0 7.423 30' W.
1 S. 85° 30' W.
2 correction N. 1098'
3 L R 2° 42'
4 L R 2° 42'
to corner

Back to Δ O
1 N. 94' W. 310
2 correction E 24"
3 (N. 0° 30' W.)
4 3.324 3.308
5 7.106 5.093
6 7.778 7.977
7 4.883 4.010
8 7.947 7.943
9 5.930 4.983
10 6.509 6.505

1.488 1.488
1.020
N. 43°
9° 30' 1.680
2.124 2.124
8.625 8.625
7.774 7.774
8.040 8.040
8.632 8.632

12 1588 10' E.
13 correction N.

Stone at cor.
6.284
2.124
8.625
7.774
8.040
8.632

Reds Cl. GA. N.E.
 DB. Malley M.E. cor.
 Oak 8" S. 80° E. 33.6
 " 10" N. 16° W. 1.39

5050x
 5200x
 45.508
 16520
 45.518
 10.31
 10.224
 .099

5303 Interior \angle 91'30"
 4920 Run N.
 10,233

Interior \angle 85°
 $20579 = 80.$
 33900
 206425
 325750
 244995
 307650 130°
 10.90

1975 $T_{int} \angle = 1.280$
 19.925
 19.43
 17.525
 Sec. cor. 15.16, 21.25, 22.5

19.391

072 Length of run

14 540.00 20.16-21.
 Distance between Sec. M.E. cor
 $2 \times 1.39 = 2.78$
 $4.175 = 19'$

MI. 280

Sta	Bearings	North	South	Dist
17		590'	1.477	1.292
18	pipe 90° E. 670	1020'	1.025	1.225
19	Hub E. 112 N. 20° E.	1020'	2.171	2.158
20	5.87° 50' W.	920'	5.374	5.703
21	A. 56° E.	430'	4.935	4.920
22	S. 08° 5'	108'	3.143	3.095
23	S. 87° 50' W.	1220'	2.280	2.816
24	S. 91° 32' W. cont. old B.M. S. 89° 34' W.	17°	3.724	3.617
25	Cor. gives top of tree 2° 30'	19°	1.960	1.873
26	Cor. gives top of tree 2° 30'	2° 30'	2.900	4.119
27	W. 220 S. 010	210	4.225	5.061
28	cont. old to be		6.587	6.947
29	N. 88° 15' W.		8.041	8.041
30	was running to	3.45'	5.911	5.898
31	right hand of fence	1950'	4.385	4.318
32	60°	820'	6.180	6.609
33	Should be S. 85° 10' W.		1.933	1.933
34	cut. N. 219 + 4111	1035'	2.145	2.403
35	True 60°	1525'	1.961	1.910
36	S. 04° 54' W.	2' 40'	2.955	2.952

Cor. gives top of tree 2° 30'

37

Sta	Bearings	Veil	CA	Dist
37		5° 30'	3.155	3.758
38		17° 25'	1494	1.421
39		12° 35'	1.185	1.107
40			1.026	1.026
41		12°	2.070	2.025
42		19° 45'	3.867	3.683
43		7° 45'	2.375	2.355
44		6° 45'	3.884	3.857
41	L 3' 2.7 S of 41		1.800	1.800
42		5° 35'	8.000	7962
43		6° 55'	3.100	3.077
44		16° 20'	2.702	2.631
44	S 54° 45' W 5		1.059	1.059
From	Sec. cor 10, 14, 21, 22 to 16, 17, 20, 21, 22	of corner	1.059	1.059
From	" " "	"	1.059	1.059
From	" " "	"	1.059	1.059
Back to Δ 41			1.059	1.059
S. 06' E.			1.059	1.059
Correction W. 39'			1.059	1.059
0	S. 33 W		12.968	12.808
1		9°	8.000	8.000
2		9°	11.130	10.993
3		3° 20'	6.905	6.893
		1° 30'	7.600	7.601

Prest.

3" Pipe
 16 004 12 S 32 E W. 1.46 STA
 21 " 12 N 68 W. 4.20
 20.30
 3.00
 17.25
 16.44
 .758
 Set cor N. 410
 110.055
 110.055
 110.055

Prest.
 Cor. to T 16, 17, 20, 21
 -132 Stake
 10" N 36° 36' E. 7.80 Ch. H. 60
 16" N 54° 26' W. A 23
 10" S 4° 40' E. 6.73
 TAIL .002
 .018
 .062
 Corrected to be W. 50'

441
 12.808
 8.000
 10.993
 6.893
 7.601
 46.776

