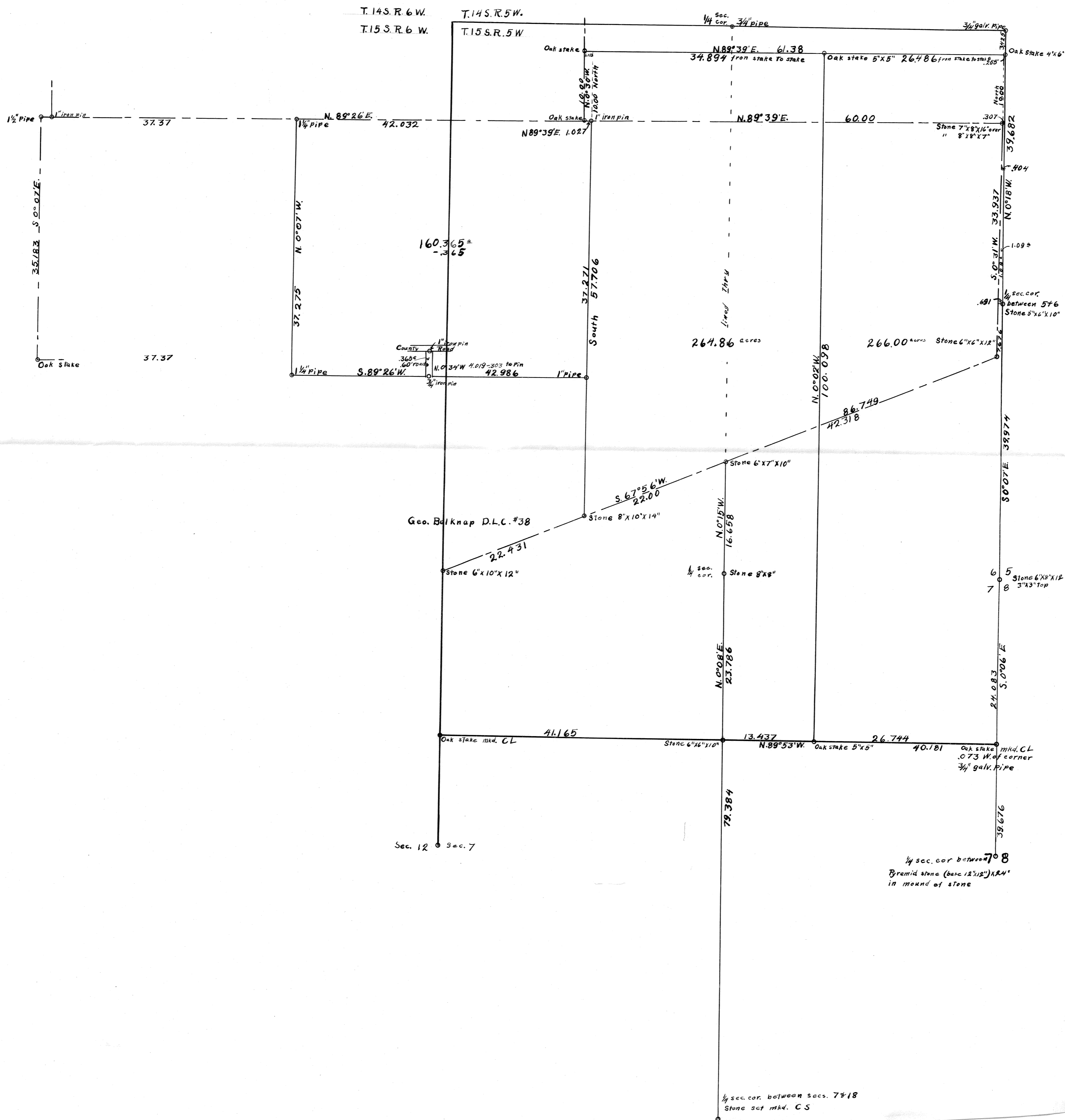


C 5162

63



46.776
4.005
2.609
6.396
59.786

7.910
7.979
1.779
17.692
12.75
17.972
17.972
17.972
17.385

offsets
1206
1398
1071
1687
1435
1519
E. 0.71
5726
5919
5919
5919
29351.0
5999.0
5431.0
17.385

To Old road
517 which is on mill fence
Corrected 11' to S.
T. 275 71 corner. SE corner of 90'.

17.698
370
17.973

Interior \angle between beginning of road
214 Sec. Cor 91432
225
Oak 10' N 55° 06' E 513 Ch.
" 14' N 15° 30' W 3.066 " Stump
P.L.C. Corner being 500 Ch. E. Out m.d.
M.Cot. Set oak stake from which a 1096
199714 Oak 32" N 10' E 1217 Ch.
8 20" S 63° 30' W 304 7.177
7.97712

7.091
36399
57807
5740
664
112
7.0412
6423
63799
21618
2161
168
116
23964
64054
23964
7.041
6.406
2.396
1.964
7.97712
7.96538
7.96538

9
516
4
5
6
7
8
9
10
11
12
0
1
2
3

Bearings
M 200
700
1035
Car. set E. 0.71
set sec. W. 508
7°
M 110
S. 27° 21' E.
(S. 27° 30' E.)
S 00° 09' E
Offset E. 0.12 (4 R 40' 19")
VH
R 70' 35"
T. 155 R. 5 W. L. M. Bellier

Ch.
4016
2609
6396
4359
8000
8000
1779
2499
9046
4436
8388
6000
3370
2694
2580
171
4.16
10.100
E. 0.09
7.051
6423
2402
8000
#63
Beginning at S.E. cor of Caton
Cl. #37
Magnetic by.
N. 40 W.
Correction E. 10'
4x5" oak stake
S. 89° 25' E
Correction N. 40 W.
(N. 89° 48' E.)

Survey #63
Beginning at S.E. cor of Caton
Cl. #37

8.000
2.008
-1.035 = 10.100
E. 0.09
7.051
6423
2402
8000

10 Sta.

Big.

Vault Ch.

8000
1900
1220
8000

NE. cor. of E. Bellhop
Oak 12 S/P 20' E. 392 Ch. 20
1 1/4 H 3500 W. 9000 ch.

Cor. N. 814
15' 20' 3000
+ 820 = 4239

N. 0006' E.
correct in W. 24'
(R. 18' H.) Sec. line

Striking W. 097
Back to Δ 7 S. 6' W.

correction 25' N. 6' 500
(S. 31' W) D.L.C. line
E. D.L.C. line

Striking E. of cor. -
Stone 8 x 8' also stone set
opari 1st st. 8 x 7 x 16'
Belt wind. C.S. One tree 3rd.

Reest. 615
Stone 2' 10' 8000
2' 30' 8000
90 6300

1.415
6.010
2.114
2.735
SE. cor. D.L.C. 553
1.374

NE. of
B. 111
3620

334 E. from K.F. cor. D.L.C. to sec. line

99758
748048
199592
99094
7967
97
1199876

3500
4469
1906
2127
40
34187

1297
9299.
17348
1721
20
12480
1179
41799
12735
1275
99

8144
60119
19226
19226
21247
21247
27302

5710
5340
2.660

7.990
55299
62950
62950
191
137
74936
3.219
2.253
1.80
2.14

41239
21182
13425
99409
799240

41239
9186
23623
39682
23623

5978
2125
2730
10857
43225
10803
34481

23804
7180

1.200
1.199
7.966
7.494

61.834
61.325
1.248
9.191
1.000
9.186

7.774
1.248
9.191
1.000
9.186

10.857
43.225
10.803
34.481

32245' From D.L.C. To Loc. 200

Sta. B.M. 922 3.12 3.42

Correction = 13'E (S.007E)

6' 20' 8000

7' 50' 7436

Stone 20' Right 33' 5' 40' 14.58

50' 00' W. correct E. 2' 8-50' 1387

(S.0° 04' W.) 3' 20' 3072

14' 14' 830

10' 20' 2916

13' 10' 4255

12' 3' 140

11' 2' 240

13' 10' 4255

12' 3' 140

11' 2' 240

13' 10' 4255

12' 3' 140

11' 2' 240

13' 10' 4255

12' 3' 140

11' 2' 240

13' 10' 4255

12' 3' 140

11' 2' 240

13' 10' 4255

12' 3' 140

11' 2' 240

13' 10' 4255

12' 3' 140

11' 2' 240

3940 10.5 3940 10.5

3940 10.5 3940 10.5

3940 10.5 3940 10.5

3940 10.5 3940 10.5

3940 10.5 3940 10.5

3940 10.5 3940 10.5

3940 10.5 3940 10.5

3940 10.5 3940 10.5

3940 10.5 3940 10.5

3940 10.5 3940 10.5

3940 10.5 3940 10.5

3940 10.5 3940 10.5

3940 10.5 3940 10.5

3940 10.5 3940 10.5

3940 10.5 3940 10.5

3940 10.5 3940 10.5

3940 10.5 3940 10.5

3940 10.5 3940 10.5

3940 10.5 3940 10.5

3940 10.5 3940 10.5

3940 10.5 3940 10.5

3940 10.5 3940 10.5

3940 10.5 3940 10.5

3940 10.5 3940 10.5

3940 10.5 3940 10.5

3940 10.5 3940 10.5

3940 10.5 3940 10.5

3940 10.5 3940 10.5

3940 10.5 3940 10.5

3940 10.5 3940 10.5

3940 10.5 3940 10.5

3940 10.5 3940 10.5

1538

1538

1538

1538

1538

1538

1538

1538

1538

1538

1538

1538

1538

1538

1538

1538

1538

1538

1538

1538

1538

1538

1538

1538

1538

1538

1538

1538

1538

1538

1538

1538

12

Bng.

Verul (Ch)

36' E. 60' (420' N.)

30' 30' 1450'

30' 16' 30' 8500'

30' 10' 5000'

30' 10' 5000'

30' 10' 5000'

30' 10' 5000'

30' 10' 5000'

30' 10' 5000'

30' 10' 5000'

30' 10' 5000'

30' 10' 5000'

30' 10' 5000'

30' 10' 5000'

30' 10' 5000'

30' 10' 5000'

30' 10' 5000'

30' 10' 5000'

OFFICE

OFFICE

OFFICE

OFFICE

OFFICE

OFFICE

OFFICE

OFFICE

OFFICE

OFFICE

OFFICE

OFFICE

OFFICE

OFFICE

OFFICE

OFFICE

OFFICE

OFFICE

OFFICE

OFFICE

OFFICE

OFFICE

OFFICE

OFFICE

OFFICE

OFFICE

OFFICE

OFFICE

OFFICE

OFFICE

OFFICE

OFFICE

OFFICE

OFFICE

OFFICE

OFFICE

OFFICE

OFFICE

OFFICE

OFFICE

OFFICE

OFFICE

OFFICE

OFFICE

OFFICE

OFFICE

OFFICE

OFFICE

OFFICE

OFFICE

OFFICE

OFFICE

OFFICE

OFFICE

OFFICE

OFFICE

OFFICE

OFFICE

OFFICE

OFFICE

OFFICE

OFFICE

OFFICE

OFFICE

OFFICE

OFFICE

OFFICE

OFFICE

OFFICE

OFFICE

OFFICE

OFFICE

OFFICE

OFFICE

OFFICE

OFFICE

OFFICE

OFFICE

OFFICE

OFFICE

OFFICE

OFFICE

OFFICE

OFFICE

OFFICE

OFFICE

OFFICE

OFFICE

OFFICE

OFFICE

OFFICE

OFFICE

OFFICE

OFFICE

OFFICE

OFFICE

OFFICE

OFFICE

OFFICE

OFFICE

OFFICE

OFFICE

OFFICE

OFFICE

OFFICE

OFFICE

OFFICE

OFFICE

13

Sta Bng

Vert. Ch.

1° 30' 8.000
2° 20' 5.369
4.436

H1 Reest.

116 Car. ← 2017 74° 30' 6.02
117 also D.L.C. cor set stone 6° 10' 112"
Oak 15° N. 29° 30' E. 1.202 obs.
" 14 S. 87° 30' E. 580
" 14 S. 83° 30' W. 294
" 14 N. 51° 30' W. 386

Beginning of A 41 Flamingo

N. 1° 15' N. correction

H7 220' 8.000
H8 850' 6.376
H9 40' 4.660
H0 7° 3.535
H1 4-10' 2.895
H2 740' 6.410
H3 10° 20' 8.000
H4 9.14
H5 3° 40' 9.53

HTT 70° E

H5 A0 ← Right 135° 50' 6-20' 2.547
1.001

8-99766
799728

5369
71999
48321
4463
53644

652
30369
0868
391
19

1741

6299
71999
52691
2668
966
4

63199

1890
62717
26050
7609
902
38871
9176

6410
60199
57690
5764
63
63524
59799
0577
507
1508

63199

47412
3985
14.490
47112
47459
86822
25416
2332
22923
22
25313
179

6410
60199
57690
5764
63
63524
59799
0577
507
1508

63199

47412
3985
14.490
47112
47459
86822
25416
2332
22923
22
25313
179

63199

47412
3985
14.490
47112
47459
86822
25416
2332
22923
22
25313
179

63199

47412
3985
14.490
47112
47459
86822
25416
2332
22923
22
25313
179

63199

47412
3985
14.490
47112
47459
86822
25416
2332
22923
22
25313
179

63199

47412
3985
14.490
47112
47459
86822
25416
2332
22923
22
25313
179

63199

47412
3985
14.490
47112
47459
86822
25416
2332
22923
22
25313
179

63199

47412
3985
14.490
47112
47459
86822
25416
2332
22923
22
25313
179

63199

offsets
628N.
11295
499N.
1034N.
533N.
383N.
455200
1337200
2184
997361
798888

997361
798888

11460
65198
41940
41944
326
13
11
46485
35084

3535
52999
31815
3181
70
11
1
35084

47412
3985
14.490
47112
47459
86822
25416
2332
22923
22
25313
179

47412
3985
14.490
47112
47459
86822
25416
2332
22923
22
25313
179

47412
3985
14.490
47112
47459
86822
25416
2332
22923
22
25313
179

47412
3985
14.490
47112
47459
86822
25416
2332
22923
22
25313
179

47412
3985
14.490
47112
47459
86822
25416
2332
22923
22
25313
179

47412
3985
14.490
47112
47459
86822
25416
2332
22923
22
25313
179

47412
3985
14.490
47112
47459
86822
25416
2332
22923
22
25313
179

47412
3985
14.490
47112
47459
86822
25416
2332
22923
22
25313
179

47412
3985
14.490
47112
47459
86822
25416
2332
22923
22
25313
179

47412
3985
14.490
47112
47459
86822
25416
2332
22923
22
25313
179

47412
3985
14.490
47112
47459
86822
25416
2332
22923
22
25313
179

47412
3985
14.490
47112
47459
86822
25416
2332
22923
22
25313
179

47412
3985
14.490
47112
47459
86822
25416
2332
22923
22
25313
179

47412
3985
14.490
47112
47459
86822
25416
2332
22923
22
25313
179

47412
3985
14.490
47112
47459
86822
25416
2332
22923
22
25313
179

47412
3985
14.490
47112
47459
86822
25416
2332
22923
22
25313
179

47412
3985
14.490
47112
47459
86822
25416
2332
22923
22
25313
179

47412
3985
14.490
47112
47459
86822
25416
2332
22923
22
25313
179

47412
3985
14.490
47112
47459
86822
25416
2332
22923
22
25313
179

47412
3985
14.490
47112
47459
86822
25416
2332
22923
22
25313
179

47412
3985
14.490
47112
47459
86822
25416
2332
22923
22
25313
179

47412
3985
14.490
47112
47459
86822
25416
2332
22923
22
25313
179

47412
3985
14.490
47112
47459
86822
25416
2332
22923
22
25313
179

47412
3985
14.490
47112
47459
86822
25416
2332
22923
22
25313
179

4097
7997
5324
4431
1174
22,068
25,407
47,475

8979
6294
6320
4164
3508
28,750
2,887
2,353
7,980
7,870
214
951
2408
57,463
801
58,272

44,278
42,878
87,850
615
87,231

2531
8732
5062
159
287
6096

927817
17719
20
245719

14 Oak Stake 6"x4" Offset
 N.E. Cor of E. Bell... Place
 Oak 10" S 18° 19' E. H27
 " 12' N 32° 41' W. 871 C.
 Beg. of A 29
 56 N 89° 54' W.
 57 correction N.1
 (N. 89° 53' W.)
 58 Left 1° 20' L
 59 Right 51'
 60 142 2082
 61 2724 2059
 62 Left 4° 24' 7020 1478
 63 5° 1575
 64 2° 10' 1917
 65 Left 5° 54' 7° 10' 5330
 66 Left 16° 13' 40' 1798
 67 Left 35' 6° 40' 1798
 68 10° 50' 3750
 CL. Right 30'
 R.O.C. Sinking 5.069
 Beginning of A 34 and run in 1914 N. 68° 32' E.
 A. 67° 56' E.
 69 150 3862
 70 4° 30' 4085
 71 4° 30' 8000
 1,846

4189
 63701
 5570
 495
 3
 41803
 3046
 29096
 27189
 2718
 181
 24
 30110
 1798
 65779
 16282
 1618
 125
 179338
 64029
 10387
 10759
 71
 17237
 36830
 00019
 82354
 7370
 63799
 66330
 6653
 510
 22
 4
 73505
 2082
 3029
 18738
 1457
 20201
 1794
 42349
 16182
 1614
 16153
 178560
 3750
 81232
 83750
 3000
 72
 1165
 543N
 427N
 499
 0725
 0185
 0905
 016N
 0745
 089N
 015N
 1917
 1999
 17253
 1726
 172
 19154
 19154
 1748
 15149
 13302
 14175
 1330
 14
 1115088
 146578
 24699
 131913
 13191
 879
 131
 528828
 44679
 4759
 47592
 4759
 317
 51
 52691
 41357
 39997
 81354
 47475
 39269
 86744
 39269
 2809
 42168

105 2.425

130 20' 4.440

30 8.000

4920' 6.351

Begin at Sta. 1, starting S. .380

74 Turning N. 40' W. 0' 4.034

" S 89° 20' N 4° 40' 8.000

3° 20' 8.000

2° 3511

- 1.58

4.60

8 1/2 Kings S. of cor.

Cor. of Ts. 147 15 Rs. 576 W.

W. Oak S. 40° E. 8.92 Ch.

one inc. stak.

did not set cor.

Beginning at a pt. 20.701

S. E. cor. of Co. L post and reading

Set 6x5 oak post iron which a

File 8" S 31° 55' E. 692 Ch.

" 12" S 33° 25' W. 824

N. 02' W.

To the next handy line 26.744 Ch. west

of the N. E. cor. of Edward Behneap

Set an oak stake 5x5" from which

Oak 30" S. 39° 44' W. 2570 Ch.

139

297.24

297.712

M. 0.34

91.699

369.06

3680

244

M. 0.185

10.5

3.5086

996.68

7.97344

3511

13944

31099

3109

10

3.5086

39.269

47.475

86.744

998.31

7.98648

M. 0.18

19.310

+ .076

19.386

61.303

10.97

80.786

19.469

1.158

19.319

(true line from 18' N of line through E.)

80.786 True dist. from cor. E.

80.66 Nos. given.

77.76 Ch. through sec. 6 N. E. S.

16.998

2.207

16.671

100.098

Sec. of Pt. 2007 E. 30.0

80.66 Nos. given.

77.76 Ch. through sec. 6 N. E. S.

16.998

2.207

16.671

100.098

26.744 Ch. west

of the N. E. cor. of Edward Behneap

Set an oak stake 5x5" from which

Oak 30" S. 39° 44' W. 2570 Ch.