

Plat of Survey No. 66 #167 Claim No. 46

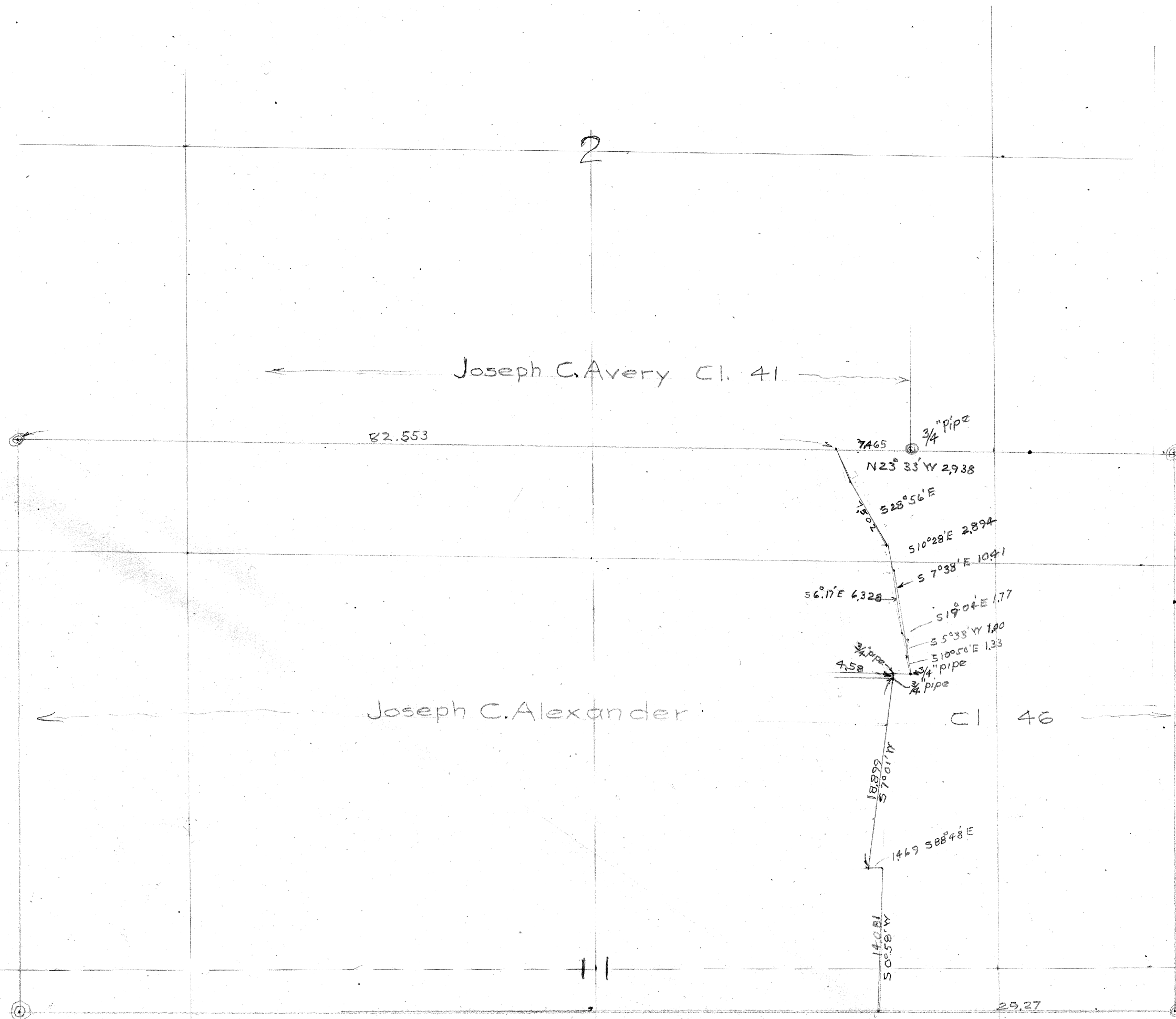
MADE FOR Seavey Bros.

Section 11 + 12 Township 12 S Range 5 W

Scale: Chains to the Inch.

Field Notes recorded at page, Vol., Record of Surveys.

Field book 5 Page 27 See special plat



#167

27 Survey No. 66 T. 12 S. R. 5 W.

Beginning at the SE. corner of Alexander D.C. No. 46

E. 0.09 From corner

N. 122 From corner

8.000

3218 12.577

11.107 32

4.381

16.32

-0.005

391

1.908

.402

-2.413 = 99.07

8.000

5.470

+1.90

.290

1.227

-0.020

.930

8.111

11.998

-0.008

.091

4.381
37.422
39.422
38.42
38.4
37.4

1.632
226.88
120.88
113.064
97

43796
1.609
1.908
1.949

10872
4183
105
011463

13442
8062
26990
1214
28257

283
011463
290
253
037
1408

29.270
243
010
223 = 9
00263
03700
291
8840
2442
3920

091 E
025 W
16065
5800
79228
77428
10600

19.257
10.505
19.289
1.262
19.281
19.277
311

19.27
19.281
19.277
311

11.596
19.990
230

19.365
1.001
19.357

11.087
13011
11.087

11.087
13011
11.087

1840
1841
1842
1843
1844
1845
1846
1847
1848
1849
1850
1851
1852
1853
1854
1855
1856
1857
1858
1859
1860
1861
1862
1863
1864
1865
1866
1867
1868
1869
1870
1871
1872
1873
1874
1875
1876
1877
1878
1879
1880
1881
1882
1883
1884
1885
1886
1887
1888
1889
1890
1891
1892
1893
1894
1895
1896
1897
1898
1899
1900

1840
1841
1842
1843
1844
1845
1846
1847
1848
1849
1850
1851
1852
1853
1854
1855
1856
1857
1858
1859
1860
1861
1862
1863
1864
1865
1866
1867
1868
1869
1870
1871
1872
1873
1874
1875
1876
1877
1878
1879
1880
1881
1882
1883
1884
1885
1886
1887
1888
1889
1890
1891
1892
1893
1894
1895
1896
1897
1898
1899
1900

1840
1841
1842
1843
1844
1845
1846
1847
1848
1849
1850
1851
1852
1853
1854
1855
1856
1857
1858
1859
1860
1861
1862
1863
1864
1865
1866
1867
1868
1869
1870
1871
1872
1873
1874
1875
1876
1877
1878
1879
1880
1881
1882
1883
1884
1885
1886
1887
1888
1889
1890
1891
1892
1893
1894
1895
1896
1897
1898
1899
1900

24 Beg. at A 111 and running N. 41° W. 162

23 ← Right 2° 11' 122

22 1200

21 7373

8200 1081

20 709

5760

16000

29 5232

28 1543

11111 550'

6000

6900 1817

27 NW. I.C. Alex. and Cl. 46 lat. 4 Right 8° 45'

30 3831

31 3799

Back to 20 SE. of Alexander

32 North 11145'

← Right 33' 8000

33 (Comp. Right 28') 3917

34 8920

35 4272

36 14131

37 N. 45° W. 6603

Made 90° S. 54° 22' W. 3865'

N. Fix 30° N. 47° 11' W. 3478'

11 20° N. Easy Street. 50 d. 20000'

41111 41747

2 16000 7983

3 7373 12441

4 8000 3317

5 709 573

6 5760 29

7 16000 16160

8 5232

9 1543

10 11111

11 6000

12 6900 1817 1817

13 1817 1817

14 1817 1817

15 1817 1817

16 1817 1817

17 1817 1817

18 1817 1817

19 1817 1817

20 1817 1817

21 1817 1817

22 1817 1817

23 1817 1817

24 1817 1817

25 1817 1817

26 1817 1817

27 1817 1817

28 1817 1817

29 1817 1817

30 1817 1817

41111

2 16000

3 7373

4 8000

5 709

6 5760

7 16000

8 5232

9 1543

10 11111

11 6000

12 6900

13 1817

14 1817

15 1817

16 1817

17 1817

18 1817

19 1817

20 1817

21 1817

22 1817

23 1817

24 1817

25 1817

26 1817

27 1817

28 1817

29 1817

30 1817

41111

2 16000

3 7373

4 8000

5 709

6 5760

7 16000

8 5232

9 1543

10 11111

11 6000

12 6900

13 1817

14 1817

15 1817

16 1817

17 1817

18 1817

19 1817

20 1817

21 1817

22 1817

23 1817

24 1817

25 1817

26 1817

27 1817

28 1817

29 1817

30 1817

41111

2 16000

3 7373

4 8000

5 709

6 5760

7 16000

8 5232

9 1543

10 11111

11 6000

12 6900

13 1817

14 1817

15 1817

16 1817

17 1817

18 1817

19 1817

20 1817

21 1817

22 1817

23 1817

24 1817

25 1817

26 1817

27 1817

28 1817

29 1817

30 1817

