

C.S. # 1688

Hardcopy 10-6 #5

also see notes in file

F. B. 44-41

Book 44

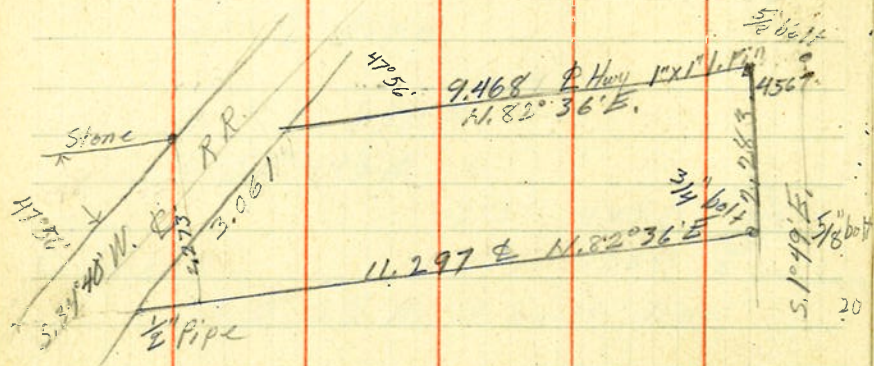
10-6

FIELD BOOK

3312



County Survey #168  
Sec 16 T10S. R 6W.



-1.045 4.096 4.094  
6.747 6.747  
456  
11.297

For E.R. Woods Aug. 31, 1944.

27.956 27.956  
27.342 .614  
.614 28.570

38.009  
28.570  
9.439 @ Hwy. to RR.

2.2731  
66 150.74314  
13.2  
.66913 1.80  
3.0574 13.2  
267652 4.80  
46839.1 4.62  
334565 1.80  
0739 1.80  
2.2721  
90884  
204489  
204579802

99526 .4567 204579804  
45454545  
39810445  
564414  
497638  
667845  
597156  
706890

582° 36' W. F.M. Roberts  
34° 36' 5.82° 36' W.  
48° 5 1° 49' E.  
84° 25'

99526 2.283  
2.27810  
199052  
281590  
199052  
825280  
796208  
290720  
298578  
426800  
371570  
552300  
520198  
09729  
2283  
29187  
77832  
19458  
19458

3.0574  
2.27280  
2.22942  
321020  
21217307  
9.439  
2.046  
11.707  
11.4567  
11.2503

.614  
.498  
116  
614  
.730  
N.82° 36' E.  
34° 40'  
47° 56'