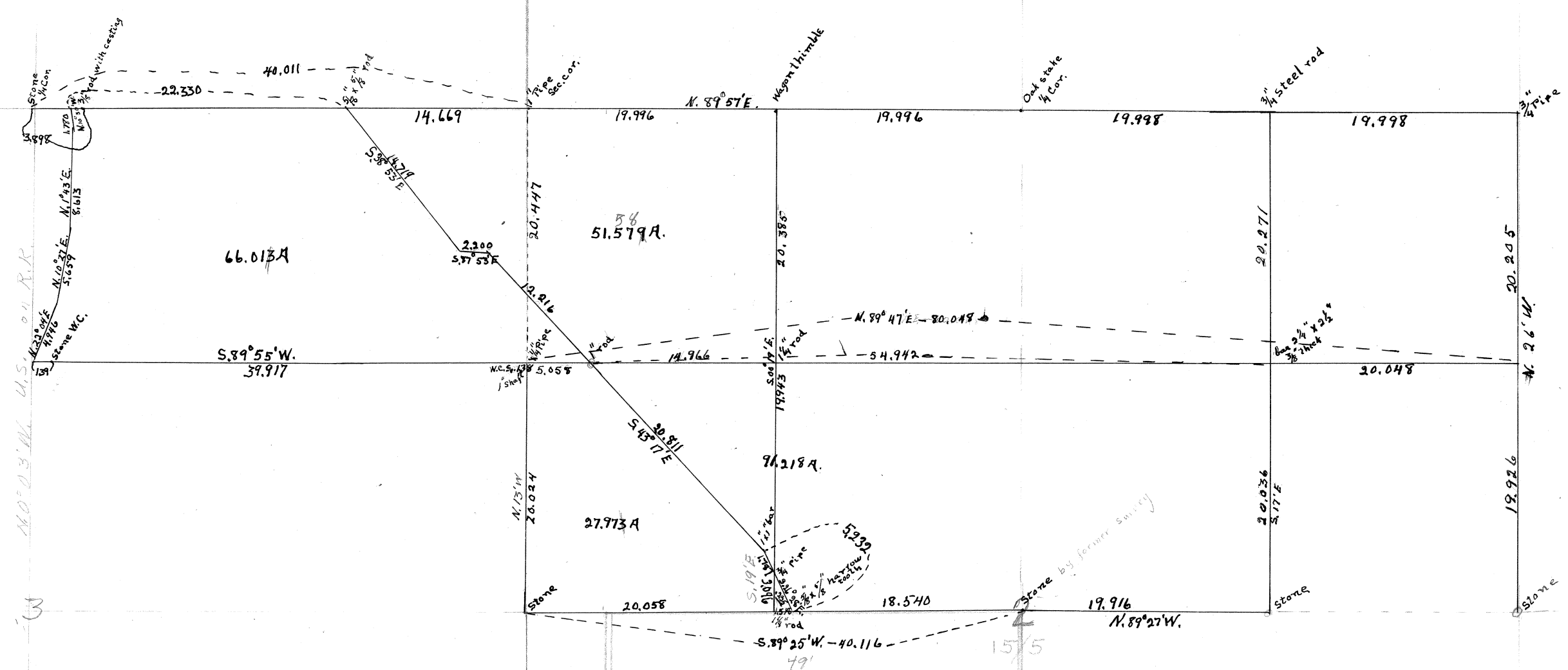


Plat of Survey No. 72 ^{#224} Claim No. _____
 Sections 243 Township 15S Range 5W.
 Scale: 10 Chains to the Inch.
 Field Notes recorded at page 49 ^{Field book}, Vol. 5, Record of Surveys.

MADE FOR M. Wilhelm.

34

35
14/5



Wm C. FLOWE

D. L. C. 42

#174
 Survey 72 for A. Wilhelm

1 Bgn at 2nd Sec. 2/3 in T.R. 15.S.R. 5 W. Stone
 1 End Run East 20.058 N. 50d.
 corrected to S. 01
 not in Total to S. 01 red.

2 4 Right 249 12.770 of set
 688

3 L Right 4221 7.984
 cor. Stone
 of set 16

4 4 Left 31' 6.394
 (con. Sec. 2)

5 correction 1st 18.5. 9.848
 of set
 117

6 L Left 52' 20 2.983
 Stone
 of set

7 N. 12. E. 20.000
 24.54

8 correction 2 E. 16.760
 19.916

9 3.240
 16.400

10 East 11.876
 40.367
 20.27

11 L Left 33' 7.961
 11° 17' 1.189
 011.037

12 2" set 3/4" pipe 2 trees std. found orig. cor.
 Oak 10" S. 79° E. 105' std.
 " 5" S. 87° W. 36 std.
 Back West 9 5.912
 13 correction 11 33' N. 59° E.
 14 7.921
 Stone of set
 cor. 24

15 Oak 10" N. 82° 38' E. 340 ch.
 " 15" S. 32° 12' W. 530 "

12.770	12.770	12.770	12.770	12.770
4194	97899	97899	97899	97899
51080	114933	114933	114933	114933
11493	11493	11493	11493	11493
127	1099	1099	1099	1099
51	99	99	99	99
62751	12754	12754	12754	12754
620	1200	1200	1200	1200
008	12500	12500	12500	12500
008	39803	39803	39803	39803
008	29980	29980	29980	29980
008	19901	19901	19901	19901
008	100790	100790	100790	100790
008	99502	99502	99502	99502
008	12500	12500	12500	12500
008	19916	19916	19916	19916
008	99526	99526	99526	99526
008	991340	991340	991340	991340
008	899784	899784	899784	899784
008	91556	91556	91556	91556
008	899781	899781	899781	899781
008	179	179	179	179
008	157760	157760	157760	157760
008	99272	99272	99272	99272
008	577840	577840	577840	577840
008	1803	1803	1803	1803
008	11872	11872	11872	11872
008	7961	7961	7961	7961
008	385000	385000	385000	385000
008	359946	359946	359946	359946
008	280540	280540	280540	280540
008	279958	279958	279958	279958
008	39926	39926	39926	39926
008	19994	19994	19994	19994
008	299955	299955	299955	299955
008	299955	299955	299955	299955
008	995950	995950	995950	995950
008	995950	995950	995950	995950
008	995950	995950	995950	995950
008	599950	599950	599950	599950
008	599950	599950	599950	599950
008	599950	599950	599950	599950
008	599950	599950	599950	599950
008	599950	599950	599950	599950

50

Back to A11

15 S. 07° E. 135'
L Left 08' 0"

16 SET L bar 24x2 1/2
Oak 1° S. 73° 13' W. 2.25' ca.
" 1° N. 10° 58' W. 1.70' "

17

18 Back to A16 ACE

19 W.
L Right 1° 3'

20 L Right 60° 00'
L Left 3° 45'

21

22

23

24

25

26 L Right 1059'

27 S. 1° 40' W.

28 L Left 2° 48' 00" W. 1059'

29 New 24 S. 42° 10' E.

30 S. 20° 01' E.

S. 25' W.

Correct iron N

Correct iron N

8.779
15.321
-4.023 = 20.205

10.825

5.176

4.003 = 19.926

12.375

7.895

-1.142

1.662

1.661

23.200

17.131

4.817

3.486

20.710

9.740

10.172

20.811

5.232

3.410

3.096

8.779
25.999
7.901
7.901
7.901
7.901
8.7755

11.321

322

30642

4.596

0.57

0.35697

0.94

0.02

0.139

7.499

5.999

7.1055

7.100

63

7.4936

1.662

1.666

9.972

9.933

11.1013

10.192

8.7599

9.936

9.932

8.12

7.1

10.1395

2.587

2.572

2.316

5.176
24.499
4.0584
4.058
4.058
4.058
5.1730

4.051

10.724

5.173

15.997

6.81

2.4097

1.445

0.29719

2.078

4.0189

1.42

1.42

11.36

1.279

1.279

1.279

1.279

1.279

1.279

1.279

1.279

1.279

1.279

1.279

1.279

1.279

1.279

1.279

1.279

1.279

5.176
24.499
4.0584
4.058
4.058
4.058
5.1730

4.051

10.724

5.173

15.997

6.81

2.4097

1.445

0.29719

2.078

4.0189

1.42

1.42

11.36

1.279

1.279

1.279

1.279

1.279

1.279

1.279

1.279

1.279

1.279

1.279

1.279

1.279

1.279

1.279

1.279

1.279

5.176
24.499
4.0584
4.058
4.058
4.058
5.1730

4.051

10.724

5.173

15.997

6.81

2.4097

1.445

0.29719

2.078

4.0189

1.42

1.42

11.36

1.279

1.279

1.279

1.279

1.279

1.279

1.279

1.279

1.279

1.279

1.279

1.279

1.279

1.279

1.279

1.279

1.279

5.176
24.499
4.0584
4.058
4.058
4.058
5.1730

4.051

10.724

5.173

15.997

6.81

2.4097

1.445

0.29719

2.078

4.0189

1.42

1.42

11.36

1.279

1.279

1.279

1.279

1.279

1.279

1.279

1.279

1.279

1.279

1.279

1.279

1.279

1.279

1.279

1.279

1.279

47 L Right 5'39'
 48 L Left 2'33'
 49 Bk To Δ 48 South
 50 L Left 4'31'
 L Right 5'
 L Right 47'
 Buck Δ 43
 51 S. 38° 18' E.
 52 S. 87° 25' E.
 S. 42° 49' E.

offset
 495
 offset
 347
 11.618
 7.810
 1.091
 11.131
 20.047
 4.045
 16.576
 16.523
 +3.067
 14.719
 2.200
 12.216

Set Wagon
 Thimble
 0.51-1999
 367
 5.55-2035
 19.943
 in cell of road
 To road in road

20.047
 19.996
 .051
 4.595
 7.802
 19.945
 20.047
 2 39.992
 19.996
 20.680
 .335
 20.325
 .057M
 .307E
 .256E
 .268N
 .012E
 .131
 4.833
 16.516
 16.521
 16.516
 40.268
 20.315
 19.943
 .02200M

4.618
 11.589
 41.562
 41.567
 230
 459.52
 7.802
 .0065
 239.952
 2.044
 2.052
 4.045
 5.857
 28315
 2022
 323
 20
 30680
 16.5210
 19.980
 11.775
 11.775
 1.37
 26.776
 40.268
 3.667
 37.922
 24482
 33440
 1407548

7.810
 9.444
 312.40
 312.4
 312
 70
 347.46
 20.047
 206
 120.282
 100.23
 1.009
 31.307
 16.523
 38.4
 16.523
 16.528
 16.528
 1.331
 1.344
 2.4502
 .256
 .006
 .262
 .267
 .245
 .02200M
 9H
 N. 10' E.