

C.S. # 1897

See notes in file

F.B.

47-30

Sec 29-11-4

C. S. # 191

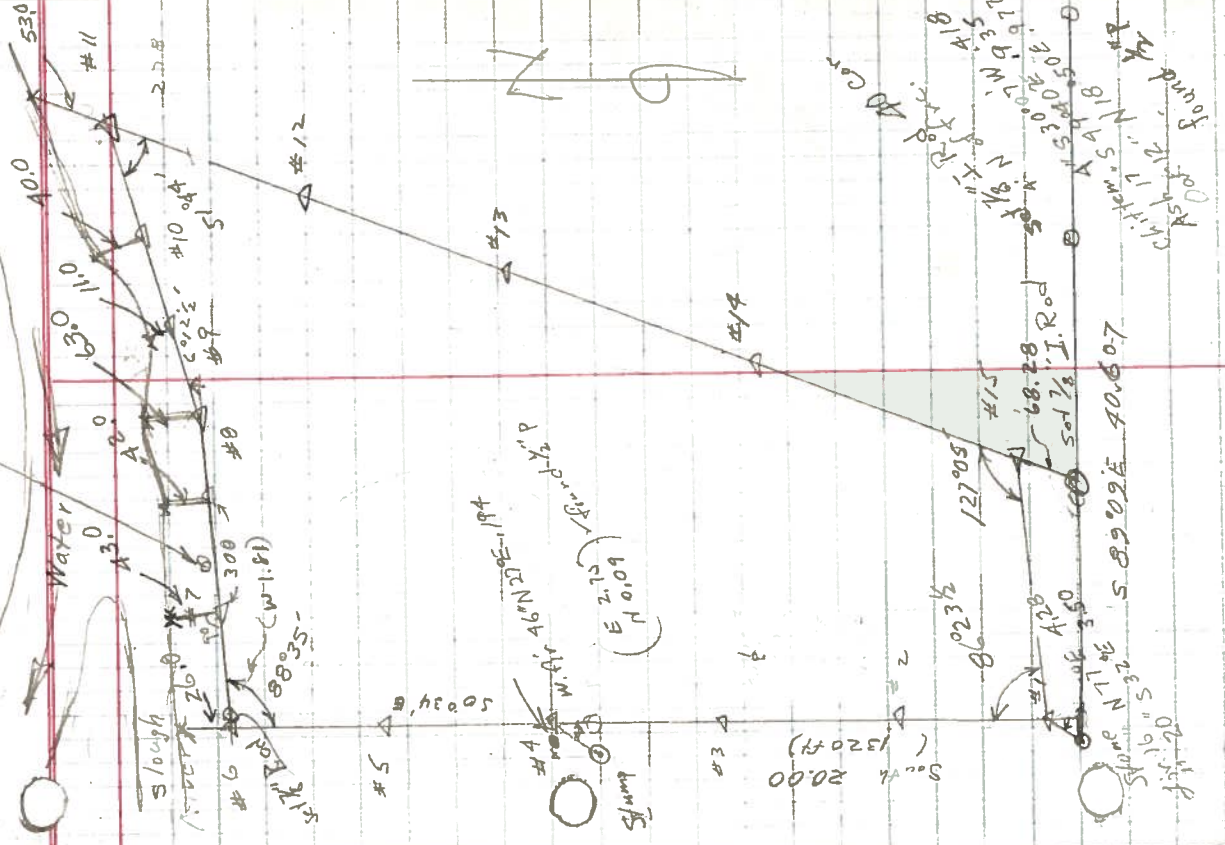
For H.L. Pentalla

5-13-47

1897

11-4-29 LINE DATE PARTY PROJECT

Very large Bee Tree 121' W and W. one of Dbl. Maple 4'S of #7



STATION	BEARING	DISTANCE	ANGLE	COORDINATES
8	LL 6°12'1/2	303.3 300.00		
7	-	297.3	88°35'	297.3
6	1st LL 88°35'	139.50		139.5
5	-	21.56		21.56
4	from 2 bearing tree	300.00	-0°31'	300.00
4	1st RL 37°28'	45.55		45.55
3	-	455.20		455.20
2	-	300.00	-0°53'	300.00
1	LL 36°48'	498.15		498.15
Stone @ NE Cor.	-	26.40		26.40

AD CAR
#11
#12
#13
#14
#15
#16
#17
#18
#19
#20
#21
#22
#23
#24
#25
#26
#27
#28
#29
#30
#31
#32
#33
#34
#35
#36
#37
#38
#39
#40
#41
#42
#43
#44
#45
#46
#47
#48
#49
#50
#51
#52
#53
#54
#55
#56
#57
#58
#59
#60
#61
#62
#63
#64
#65
#66
#67
#68
#69
#70
#71
#72
#73
#74
#75
#76
#77
#78
#79
#80
#81
#82
#83
#84
#85
#86
#87
#88
#89
#90
#91
#92
#93
#94
#95
#96
#97
#98
#99
#100

Slough
Water
Found
Stump
Slope N 11° E 58.9029 E 40.607
Slope N 11° E 32.2° S 16.0' S 20.0' W 20.0' E 1320 ft
AD CAR
#11
#12
#13
#14
#15
#16
#17
#18
#19
#20
#21
#22
#23
#24
#25
#26
#27
#28
#29
#30
#31
#32
#33
#34
#35
#36
#37
#38
#39
#40
#41
#42
#43
#44
#45
#46
#47
#48
#49
#50
#51
#52
#53
#54
#55
#56
#57
#58
#59
#60
#61
#62
#63
#64
#65
#66
#67
#68
#69
#70
#71
#72
#73
#74
#75
#76
#77
#78
#79
#80
#81
#82
#83
#84
#85
#86
#87
#88
#89
#90
#91
#92
#93
#94
#95
#96
#97
#98
#99
#100

LINE DATE PARTY

PROJECT

DATE FOR

LINE	DATE	PARTY
2		
1	1 st / 11	86°23 1/2'
15	1 st / 11	127°05'
14		
13		
12		
11	1 st / 11	51°44'
10		
9		
8	1 st / 11	6°12 1/2'

1320
321.56
139.50
277.30
603.30
686.00
3367.66

2/25-10-194
127°05' 16.5
127°04'
103.44
51.44

97,885
299,964

86°24'
172°48'

180073
2664
320382
480438
160144
21139272

88°35'
186°12 1/2'
51°44'
127°05'
86°23 1/2'

540°00'
540°00'

Angle Closure OK.

.60830 15399
14.15 12.7
304150 317783
60830 90798
60830 45359
86074450 576567
577

3367.66
543.05
522.65
530.65
524.40
415.05
5903.46

tan δ = .009826
1320 12.970000
11.880
10900
10560
340
2640
7600

.59902
26.4
239608
359412
119804
15819128
2.84

4.1505
.0728
332040
83010
390535
39215640
808.95
.05306
485970
2429850
404975
429759470

50034'E
85°23 1/2'
85°49 1/2' W
707 1/2'

○

RH

S 85°49 1/2' W
707 1/2'

S 78°42' W
19°20 1/2'
93°02 1/2'

○

N 86°57 1/2' W
49°41'
N 37°16 1/2' W
55°00'

○

92°16 1/2'
S 87°43 1/2' W
2037
N 89°39 1/2' W
50°36 1/2'

○

N 39°03' W

○

N 0°34' W
36°48'
36014 W

998.8
.05306
59628
298640
49696
52731028

120981290

○

1539190
1371595
97975
120981290

19595
52182
1539190
1371595
97975

120981290

○

218
299.7
81.7

65°57' 1/2
173°55'

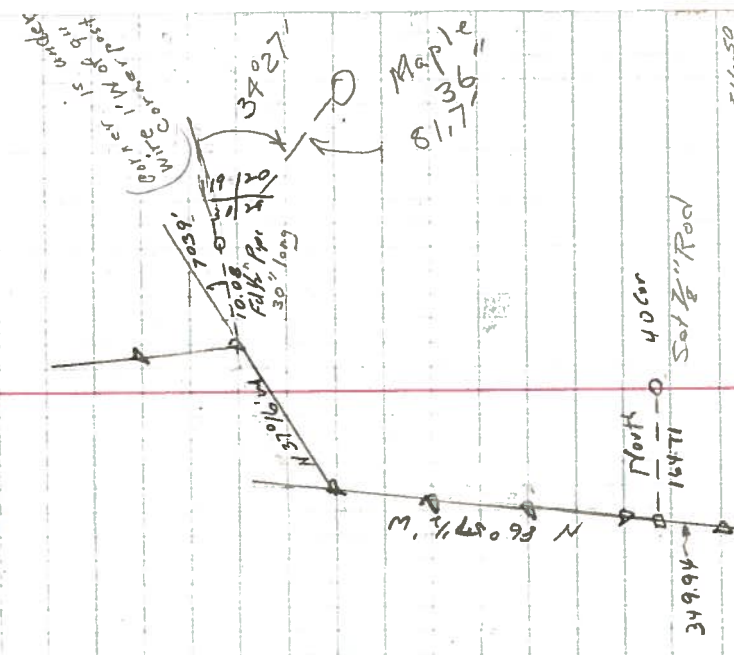
LINE DATE..... PARTY.....

PROJECT.....

DATE.....

1/2"P								
23	<RT	50°36 1/2'	-	30.35				
22	<RT	2°37'	-	875.85				
21	<LT	55°00'	-	660.50				
20	<RT	49°41'	+2°30'	137.25	137.12			
19	-		-2°30'	142.50	142.36			
18	-		-	651.30				
17	-		+0°21'	298.45				
16	<RT	14°20 1/2'	-	511.50				
15	<LT	7°07 1/2'	-	571.82				

from #1



349.94
North
16471
4060
Set 1/2" Rod

37°27'
1008
1008
Folk Par
30" long
Bitter is order
1/2" W of 9" order

Maple
81.736

809.98

511.50
349.94
137.25
W .16
461.4