

C.S. # 1907

See notes in file

F.B.

Cl. 48-14-6
CS # 106

For Luther Elliott

6-47

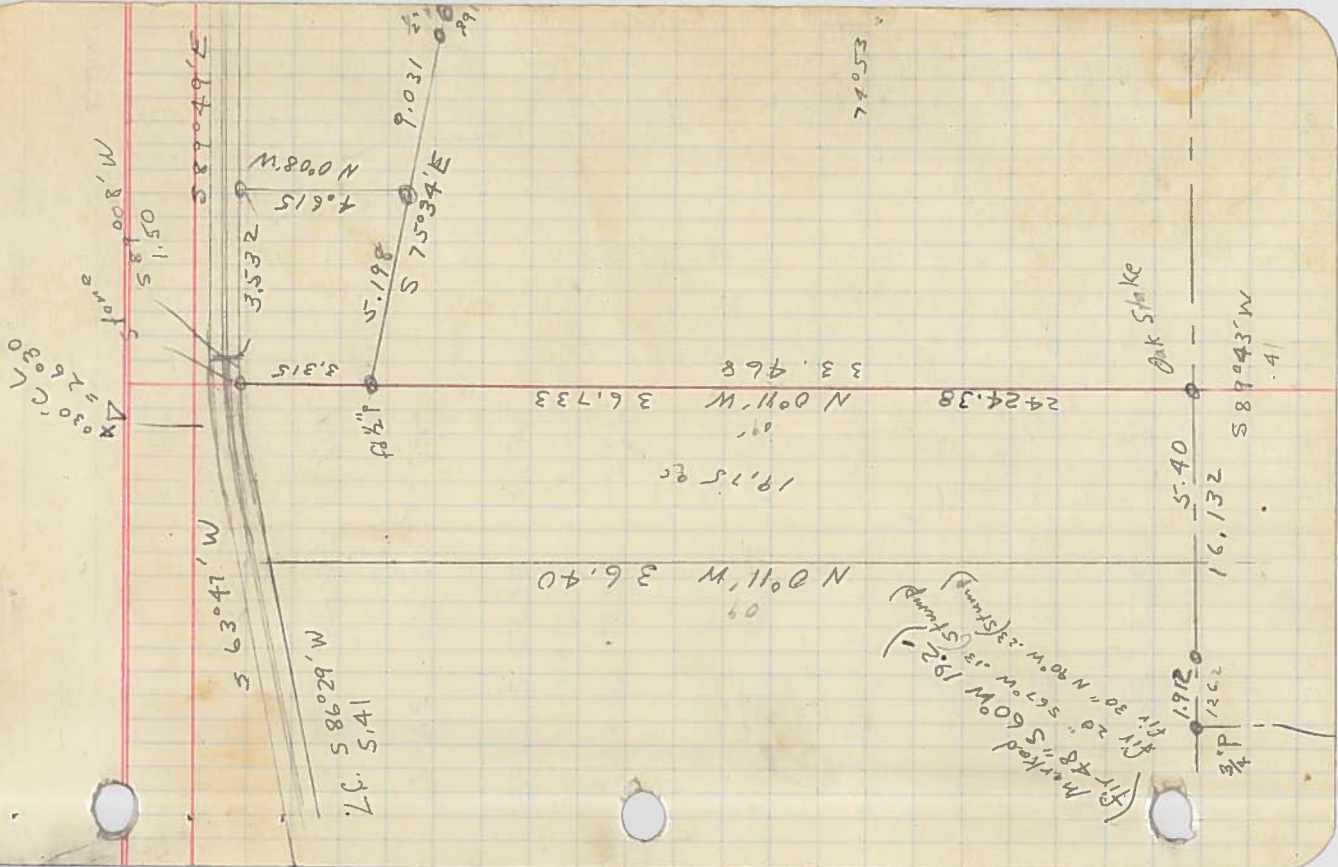
1907

LINE DATE PARTY

PROJECT

KILHAM FORM P-122

Δ 1/2	-	+4°10'	142.93	142.55
Δ 2	-	+15°42'	140.68	135.43
Δ 1	- 9	+22°44'	211.44	195.01
C. Rd	-	+3°11'	295.58	295.12
N of RR	1/2 Rt 82°26 1/2	-	356.56	356.56
Prolonged Tangent W	< Lt 73 1/2	-	25.00	2.94 W
Stone				
S Rail of RR	< Lt 96°45'	-4°18'	48.81	48.17
Tangent produced W				
Stone				
Δ	1/2 Rt 97°45'	-6°26'	219.94	218.55
Δ	< Rt 90°	-	46.98	
1/2 P on Co Rd	E (Mag Var 21°)			



LINE DATE _____ PARTY _____

PROJECT
 NETHER FORM P-172
 08'S and 35'E of true point
 Nail Temp Cor Set Rod
 Cor Set by Ch. tip from
 Fir bear trees and bit of rotten wood.

- △₁ \angle RT 20°27' 230.87
- △₂ Bottom of Draw SW x S 29.90
- △₃ \angle Int RT 78°38' 121.96
- △₄ (5' ± part top of Ridge Running E-W) 216.32
- △₅ 77°27' 67.37 66.80
- △₆ 72°27' 307.10 190.94
- △₇ 71°05' 300.00 295.21
- △₈ 79°40' 151.93 149.75
- △₉ 712°27' 226.05 220.73
- △₁₀ 71°40' 272.73 267.10
- △₁₁ Canyon NE 46' DP. 25°59' 1021.90
- △₁₂ Top - 76°56' 292.55 290.41

1987.5
 19.0
 218.15
 -50.12
 8.26
 211500
 733 1/2
 5.198
 3.315
 16890
 16890
 19937
 220

212. 1987.5
 1987.5
 1987.5
 218.790
 300
 81.21
 199087
 48.17
 693609
 99087
 792696
 396348
 47730207
 4698
 .75
 11759
 294W
 199131
 353.460000
 297393
 560670
 495655
 650150
 574782
 553640
 495655
 579850
 18696
 1980.50
 276.05 E
 1021.90 S
 276.05 E
 82°26' 179060
 97°33' 179060
 82°26' 179060
 15°07' R+

82°26' 5.40
 7033' 3240
 74°53' 35690
 89°60' 2.94
 15°07' 35346
 2402.90 5509
 1021.90 82°26'
 1480.50 82°26'
 16453
 1.18'
 46.87
 48.07
 11°14' RT
 14045
 25059
 1509.31
 36.733
 1044
 1.118
 1.118

2427.28
 46.89
 2380.39
 1023.64
 1356.75
 1406.85
 89°53'
 11°14'
 78°39'
 1353.93

Net 275.74 (1021.97)
 265.63 (1381.54)

LINE DATE PARTY

PROJECT

REHAM FORM #172

Set 1/4 I. Road on RR Rt of Way South side

N of RR Δ 1st Lt Rt 14°43' from Δ_1

RR

N 10° 10' W

356.40

Road 1st Lt 91°09 1/2'

10°10' 147.24 144.93

572.40

N 10° N

489.25

Δ NRR 1st Lt 15°07' from Δ_1

N 89°49' W

703.34

97°22 1/2

1790.607

NS 82°37 1/2 W E

82°26 1/2

165°04

1790.60

S 14°54' E

150.07

S 0°13' W

11

15°24

150.07

14.43

PROJECT _____ LINE DATE _____ PARTY _____

PROJECT

KILMER FORM P-172 183071

①	4.75' offset across canyon NS	-6°55'	296.57	294.41
Δ ₁₇	∠ Lt 0°55½'	-28°15'	206.97	182.32
Δ ₁₆		-33°45'	124.08	103.17
Δ ₁₅		-16°30'	62.58	60.00
Δ ₁₄		-	69.60	69.60
Δ ₁₃	- over Ridge SW	+20°49'	128.05	119.69
Δ ₁₀	∠ Rt 78°38' from Δ ₉ SW to W			
(Δ ₁₀)	∠ Lt 69°44' from Δ ₉ - 6.30 set 7/8" Rod			